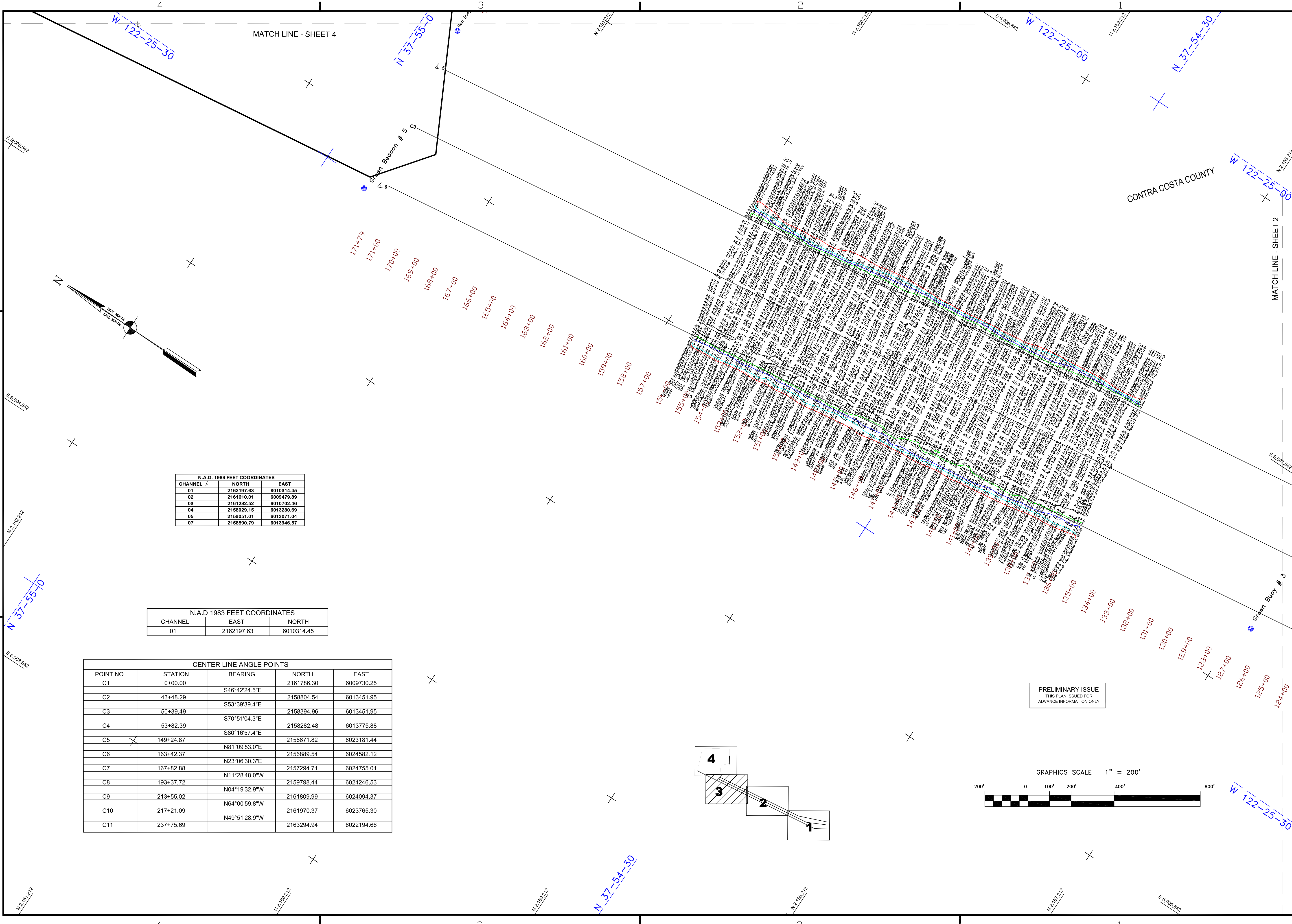


Mark	Description	Date	Appr.

DESIGNED BY:	PDT	CHECKED BY:	DRAWN BY:
		PDT	PDT
DATE:	SHEET NO.	DRAWING NO.	DATE:
DESIGNED BY: TORREY A. DICIRO			PREPARED UNDER THE DIRECTION OF
SUBMITTED: PDT			APPROVED:
APPROVAL RECOMMENDED: Chief, Geomatics Section			APPROVED:
APPROVAL RECOMMENDED: Chief, Construction Branch			APPROVED:

CALIFORNIA
CONTRA COSTA COUNTY
RICHMOND HARBOR
SOUTHAMPTON SHOALS
CONDITION SURVEY
17 OCTOBER 2011

Sheet reference number
C3



N.A.D. 1983 FEET COORDINATES

CHANNEL	NORTH	EAST
01	2162197.63	6010314.45
02	2161610.01	6009479.89
03	2161282.52	6010702.46
04	2158029.15	6013280.89
05	2159051.01	6013071.04
07	2158590.79	6013946.57

N.A.D. 1983 FEET COORDINATES

CHANNEL	EAST	NORTH
01	2162197.63	6010314.45

CENTER LINE ANGLE POINTS

POINT NO.	STATION	BEARING	NORTH	EAST
C1	0+00.00	S46°42'24.5"E	2161786.30	6009730.25
C2	43+48.29	S53°39'39.4"E	2158804.54	6013451.95
C3	50+39.49	S70°51'04.3"E	2158394.96	6013451.95
C4	53+82.39	S80°16'57.4"E	2158282.48	6013775.88
C5	149+24.87	N81°09'53.0"E	2156671.82	6023181.44
C6	163+42.37	N23°06'30.3"E	2156889.54	6024582.12
C7	167+82.88	N11°28'48.0"W	2157294.71	6024755.01
C8	193+37.72	N04°19'32.9"W	2159798.44	6024246.53
C9	213+55.02	N64°00'59.8"W	2161809.99	6024094.37
C10	217+21.09	N49°51'28.9"W	2161970.37	6023765.30
C11	237+75.69		2163294.94	6022194.66