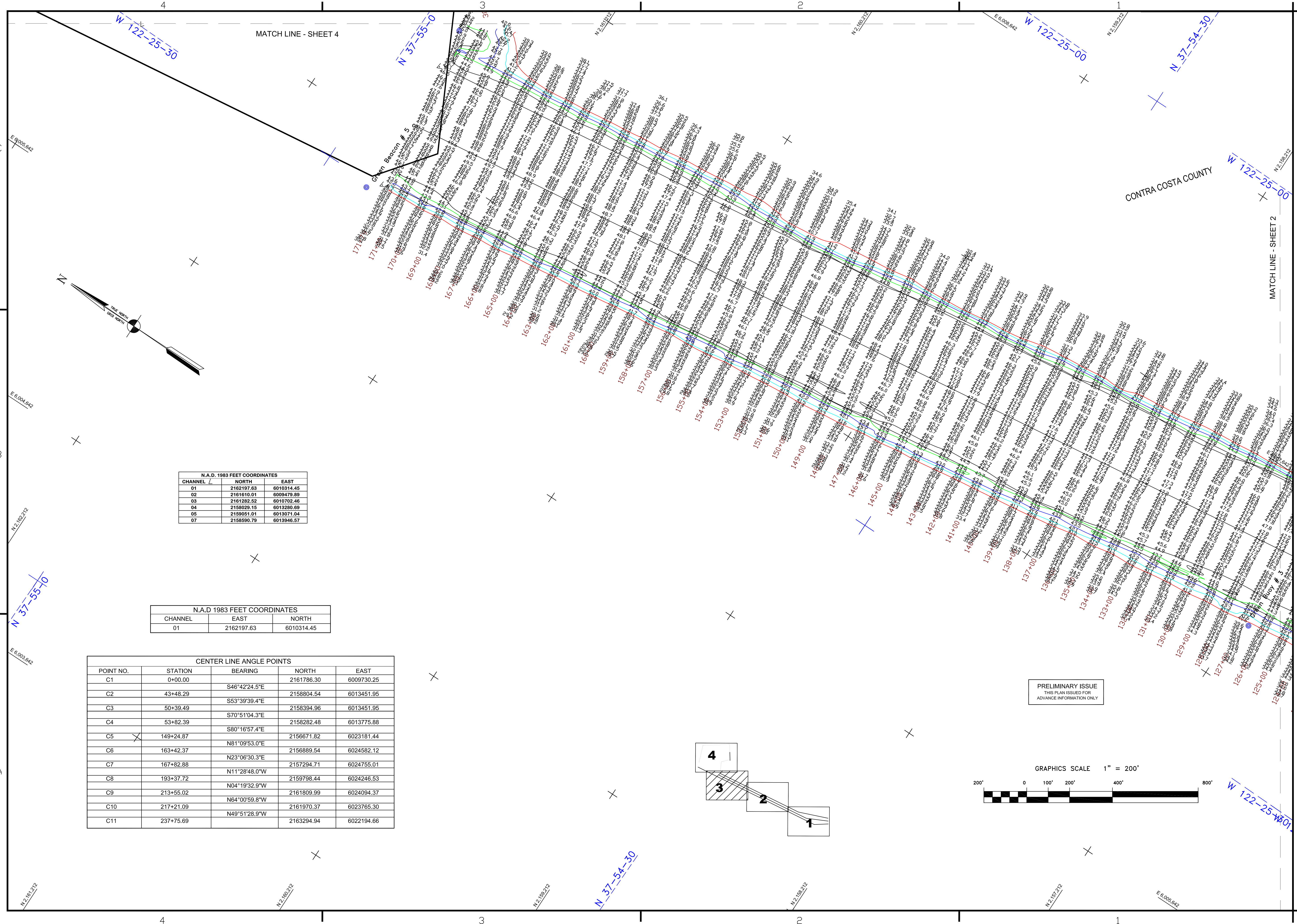


Mark	Description	Date	Appr.

DESIGNED BY:	PDT	CHECKED BY:	PDT	DATE:	9/6/2011	DRAWING NO.:	3 OF 4	SHEET NO.:	9	2
APPROVAL RECOMMENDED:										
PREPARED UNDER THE DIRECTION OF										
TORREY A. DICIRO										
LT. COLONEL, C.E., DISTRICT ENGINEER										

CALIFORNIA
 CONTRA COSTA COUNTY
 RICHMOND HARBOR
 SOUTHAMPTON SHOALS
 POSTDREDGE SURVEY
 31 AUGUST & 01 SEPTEMBER 2011

Sheet reference number
C3



N.A.D. 1983 FEET COORDINATES

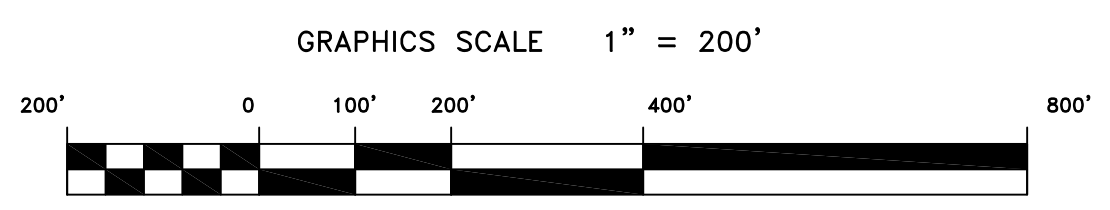
CHANNEL	NORTH	EAST
01	2162197.63	6010314.45
02	2161610.01	6009479.89
03	2161282.52	6010702.46
04	2158029.15	6013280.89
05	2159051.01	6013071.04
07	2158590.79	6013946.57

N.A.D. 1983 FEET COORDINATES

CHANNEL	EAST	NORTH
01	2162197.63	6010314.45

CENTER LINE ANGLE POINTS

POINT NO.	STATION	BEARING	NORTH	EAST
C1	0+00.00	S46°42'24.5"E	2161786.30	6009730.25
C2	43+48.29	S53°39'39.4"E	2158804.54	6013451.95
C3	50+39.49	S70°51'04.3"E	2158394.96	6013451.95
C4	53+82.39	S80°16'57.4"E	2158282.48	6013775.88
C5	149+24.87	N81°09'53.0"E	2156671.82	6023181.44
C6	163+42.37	N23°06'30.3"E	2156889.54	6024582.12
C7	167+82.88	N11°28'48.0"W	2157294.71	6024755.01
C8	193+37.72	N04°19'32.9"W	2159798.44	6024246.53
C9	213+55.02	N64°00'59.8"W	2161809.99	6024094.37
C10	217+21.09	N49°51'28.9"W	2161970.37	6023765.30
C11	237+75.69	N49°51'28.9"W	2163294.94	6022194.66



PRELIMINARY ISSUE
 THIS PLAN ISSUED FOR
 ADVANCE INFORMATION ONLY

