

PRELIMINARY ISSUE
THIS PLAN ISSUED FOR
ADVANCE INFORMATION ONLY

US Army Corps
of Engineers
San Francisco District
450 Golden Gate Ave
San Francisco, CA 94102

DISCLAIMER
The United States Government furnishes no warranty, expressed or implied, concerning the accuracy, completeness, or reliability of any information, data, or material, or any drawings, plans, specifications, or designs, or any of the application of the data for other than the intended purpose. The user is responsible for the results of any application of the data for other than the intended purpose.
Distribution Liability: The data represents the results of data collection activities and indicates the general existing conditions. Engineers activity and indicates the general existing conditions. As such, it is only valid for its intended use, content, time and accuracy applications. The user is responsible for the results of any application of the data for other than the intended purpose.
The United States Government furnishes no warranty, expressed or implied, concerning the accuracy, completeness, or reliability of any information, data, or material, or any drawings, plans, specifications, or designs, or any of the application of the data for other than the intended purpose. The user is responsible for the results of any application of the data for other than the intended purpose.
These data belong to the Government. Therefore the recipient may not transfer these data to others without also transferring this Disclaimer.

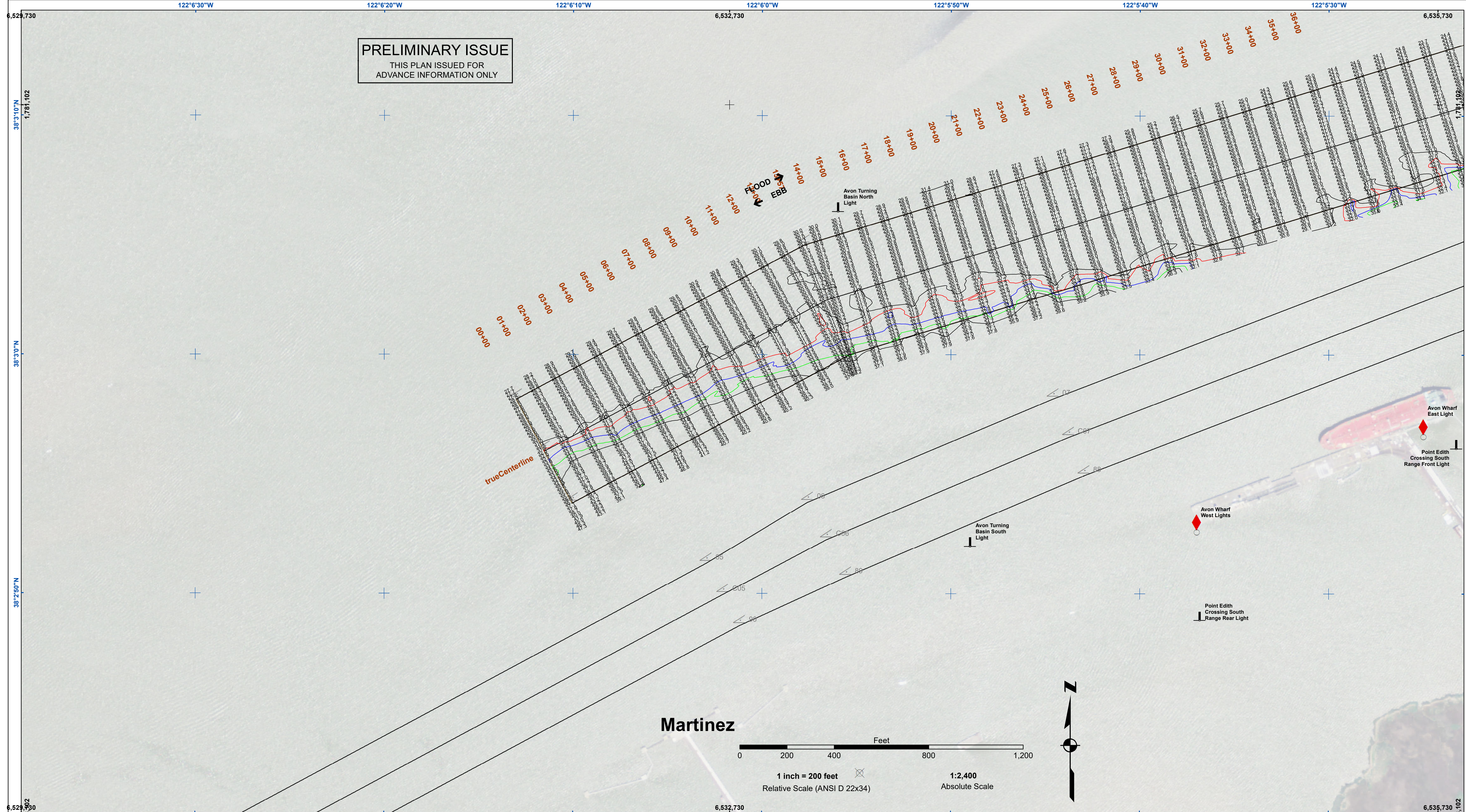
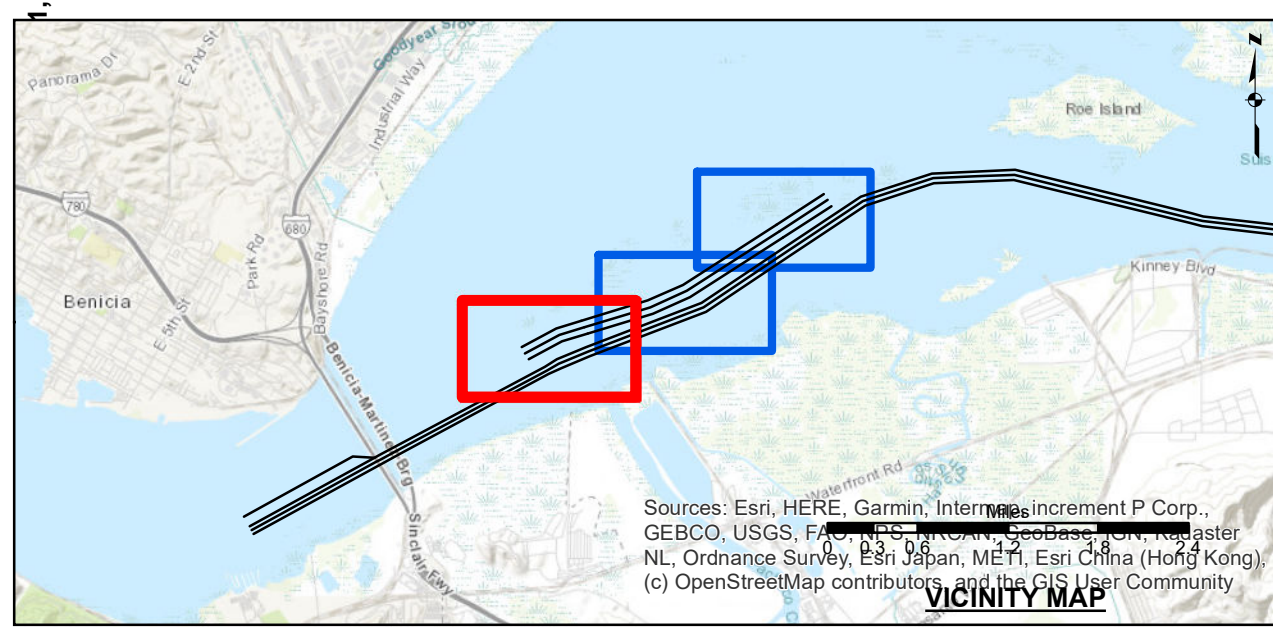


Chart Date:	Mar 06, 2024
Designed by:	PDT
Drawn by:	PDT
Surveyed By:	PDT
Plotted By:	PDT
Checked By:	PDT
Approved:	PDT

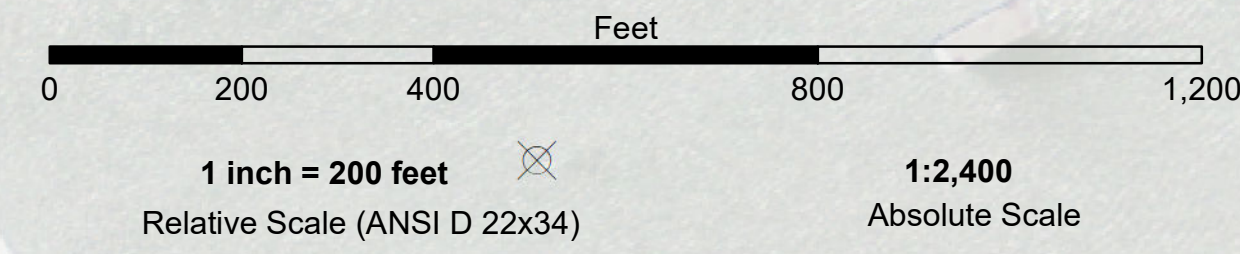
PREPARED UNDER THE DIRECTION OF
TIMOTHY W. SHEBESTA
LT COLONEL, C.E. DISTRICT ENGINEER
Submitted: Hydro Survey Team Leader
Recommended: Chief, Hydro Survey Section
Approved: Chief, Construction Branch

CALIFORNIA
CONTRA COSTA COUNTY
SUISUN BAY CHANNEL
DISPOSAL SITE (SF16)
CONDITION SURVEY
9 FEBRUARY 2024
Sheet
Reference
Number
1 of 3



- Federal Navigation Channel
- ▭ Shoaling Area
- ▭ Placement Area
- - - Anchorage Area
- ▨ Wreck Area
- ✂ Submerged Wreck
- ∠ Angle Point
- ⊥ Beacon, General
- ⊗ Obstruction Point
- ◆ Navigation Buoy
- ◇ Navigation Buoy
- Shoalest Sounding*
- Contours**
- -35
- -34
- -33
- -32
- -31

Martinez

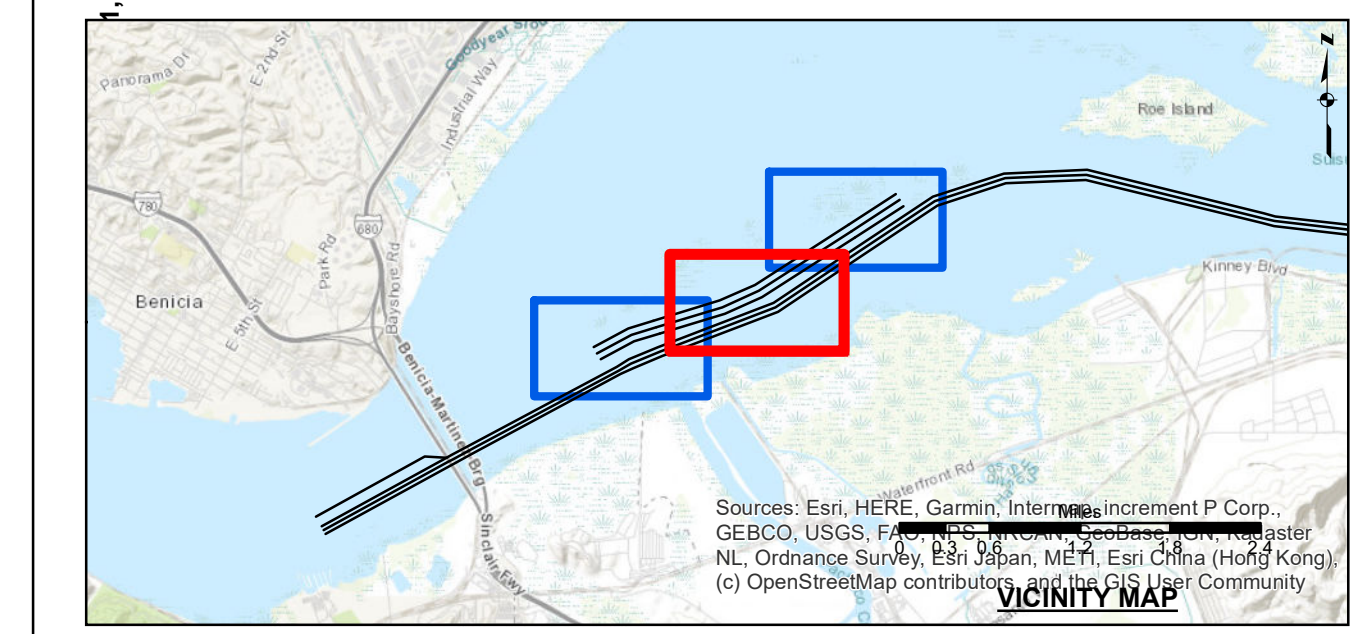
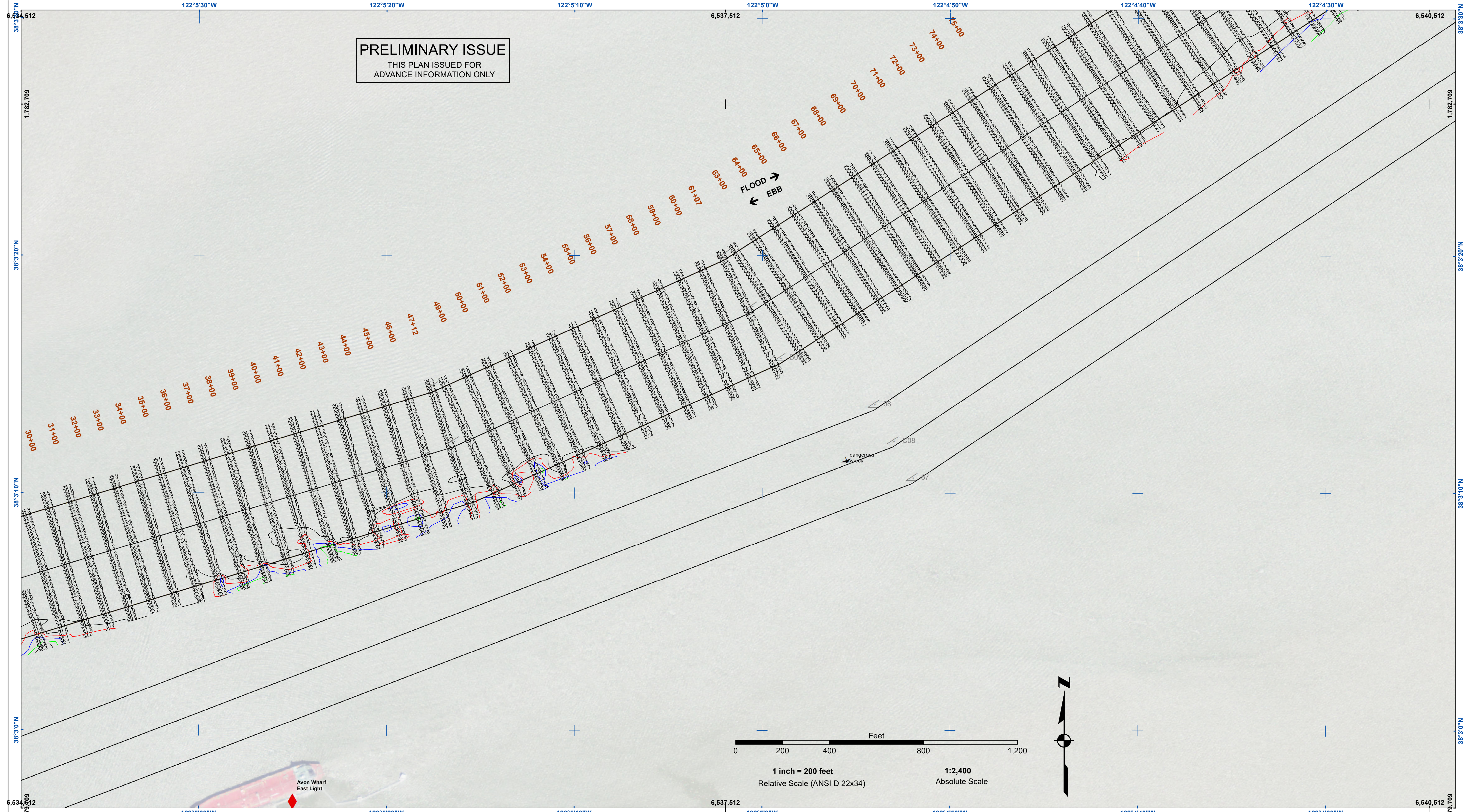


NOTES:
HORIZONTAL COORDINATE SYSTEM:
NORTH AMERICAN DATUM OF 1983 (NAD83), PROJECTED TO THE STATE PLANE COORDINATE SYSTEM (SPCS), CALIFORNIA ZONE II. DISTANCE UNITS IN U.S. SURVEY FEET.
VERTICAL DATUM:
SOUNDINGS ARE SHOWN IN FEET AND INDICATE DEPTHS BELOW MEAN LOWER LOW WATER.
THE INFORMATION DEPICTED ON THIS MAP REPRESENTS THE RESULTS OF A SURVEY CONDUCTED ON THE DATE INDICATED AND CAN ONLY BE CONSIDERED TO REPRESENT THE GENERAL CONDITION EXISTING AT THAT TIME.
PLANE GRID, BEARING AND COORDINATES ARE BASED ON THE STATE OF CALIFORNIA COORDINATE SYSTEM, LAMBERT CONFORMAL PROJECTION ZONE II NAD 83, CALIFORNIA, AS DESCRIBED IN SPECIAL PUBLICATION NO. 235, PUBLISHED BY NATIONAL OCEAN SURVEY.
BASE MAPS ARE USGS NAIP 2010.
*SHOALEST SOUNDING PER QUARTER PER REACH
DRAWING NOT TO BE USED FOR NAVIGATION, ONLY CHANNEL CONDITION AT DATE OF SURVEY.
THE LOCATION OF ALL NAVIGATION AIDS ARE BASED ON INFORMATION PROVIDED BY THE U.S. COAST GUARD. BUOY LOCATIONS REPRESENT THE POSITION OF THE SINKER ONLY.
SURVEYED BY THE CORPS OF ENGINEERS.
SOUNDING FOR THE CHANNEL MEASURED WITH MULTIBEAM ECHOSOUNDER AND ARE SHOWN TO THE NEAREST TENTH FOOT.
SOUNDINGS ARE BASED ON THE DATUM OF MEAN LOWER LOW WATER AT THE LOCALITY.
THE PROJECT DEPTH IS 35 FEET.
VERTICAL CONTROL:
SUISUN BAY CHANNEL
(LINES 00+00 TO 160+00) BENCHMARK "9" (1948), USC&GS DISK ELEV 14.875 FT MLLW.
TIDE GAUGE LOCATED AT PORT OF BENICIA DOCK.
(LINES 150+00 TO 500+00) BENCHMARK "5144-P" (1990 RESET 1997), USC&GS DISK, ELEV 21.78 FT MLLW.
(LINES 500+00 TO 660+00) BENCHMARK "5144-P" (1990 RESET 1997), USC&GS DISK, ELEV 21.78 FT MLLW.
TIDE GAUGE LOCATED AT CONCORD NAVAL WEAPONS STATION TUG DOCK, NOAA STATION.
(LINES 660+00 TO 733+45) BENCHMARK "5096-B", USC&GS DISK, ELEV 21.78 FT MLLW.
TIDE GAUGE LOCATED AT DIABLO SERVICE DOCK.
HORIZONTAL GPS CONTROL: COAST GUARD D-BEACON

PRELIMINARY ISSUE
THIS PLAN ISSUED FOR
ADVANCE INFORMATION ONLY

**US Army Corps
of Engineers**
San Francisco District
450 Golden Gate Ave
San Francisco, CA 94102

DISCLAIMER
The United States Government furnishes this information for the general information of the recipient and does not warrant, express or implied, the accuracy, completeness, or reliability of the information. The user is responsible for the results of any application of the data for other than the intended purpose. The user is responsible for the results of any application of the data for other than the intended purpose. The user is responsible for the results of any application of the data for other than the intended purpose.



- Federal Navigation Channel
- Shoaling Area
- Placement Area
- Anchorage Area
- Wreck Area
- Submerged Wreck
- Angle Point
- Beacon, General
- Obstruction Point
- Navigation Buoy
- Navigation Buoy
- Shoalest Sounding*
- Contours**
- 35
- 34
- 33
- 32
- 31

NOTES:
HORIZONTAL COORDINATE SYSTEM:
NORTH AMERICAN DATUM OF 1983 (NAD83), PROJECTED TO THE STATE PLANE COORDINATE SYSTEM (SPCS), CALIFORNIA ZONE II. DISTANCE UNITS IN U.S. SURVEY FEET.
VERTICAL DATUM:
SOUNDINGS ARE SHOWN IN FEET AND INDICATE DEPTHS BELOW MEAN LOWER LOW WATER.
THE INFORMATION DEPICTED ON THIS MAP REPRESENTS THE RESULTS OF A SURVEY CONDUCTED ON THE DATE INDICATED AND CAN ONLY BE CONSIDERED TO REPRESENT THE GENERAL CONDITION EXISTING AT THAT TIME.
PLANE GRID, BEARING AND COORDINATES ARE BASED ON THE STATE OF CALIFORNIA COORDINATE SYSTEM, LAMBERT CONFORMAL PROJECTION, ZONE II NAD 83, CALIFORNIA, AS DESCRIBED IN SPECIAL PUBLICATION NO. 235, PUBLISHED BY NATIONAL OCEAN SURVEY, BASE MAPS ARE USDA NAIP 2010.
*SHOALEST SOUNDING PER QUARTER PER REACH
DRAWING NOT TO BE USED FOR NAVIGATION, ONLY CHANNEL CONDITION AT DATE OF SURVEY.
THE LOCATION OF ALL NAVIGATION AIDS ARE BASED ON INFORMATION PROVIDED BY THE U.S. COAST GUARD. BUOY LOCATIONS REPRESENT THE POSITION OF THE SINKER ONLY.

SURVEYED BY THE CORPS OF ENGINEERS.
SOUNDING FOR THE CHANNEL MEASURED WITH MULTIBEAM ECHOSOUNDER AND ARE SHOWN TO THE NEAREST TENTH FOOT.
SOUNDINGS ARE BASED ON THE DATUM OF MEAN LOWER LOW WATER AT THE LOCALITY.
THE PROJECT DEPTH IS 35 FEET.
VERTICAL CONTROL:
SUISUN BAY CHANNEL
(LINES 00+00 TO 160+00) BENCHMARK "9" (1948), USC&GS DISK
ELEV 14.875 FT MLLW.
TIDE GAUGE LOCATED AT PORT OF BENICIA DOCK.
(LINES 150+00 TO 500+00) BENCHMARK "5144-P" (1990 RESET 1997),
(LINES 500+00 TO 660+00) BENCHMARK "5144-P" (1990 RESET 1997),
USC&GS DISK, ELEV 21.78 FT MLLW.
TIDE GAUGE LOCATED AT CONCORD NAVAL WEAPONS STATION TUG DOCK, NOAA STATION.
(LINES 660+00 TO 733+45) BENCHMARK "5096-B",
USC&GS DISK, ELEV 21.78 FT MLLW.
TIDE GAUGE LOCATED AT DIABLO SERVICE DOCK.
HORIZONTAL GPS CONTROL: COAST GUARD D-BEACON

Chart Date:	Mar 06, 2024
Designed by:	PDT
Drawn by:	PDT
Checked by:	PDT
Approved:	Chief, Construction Branch

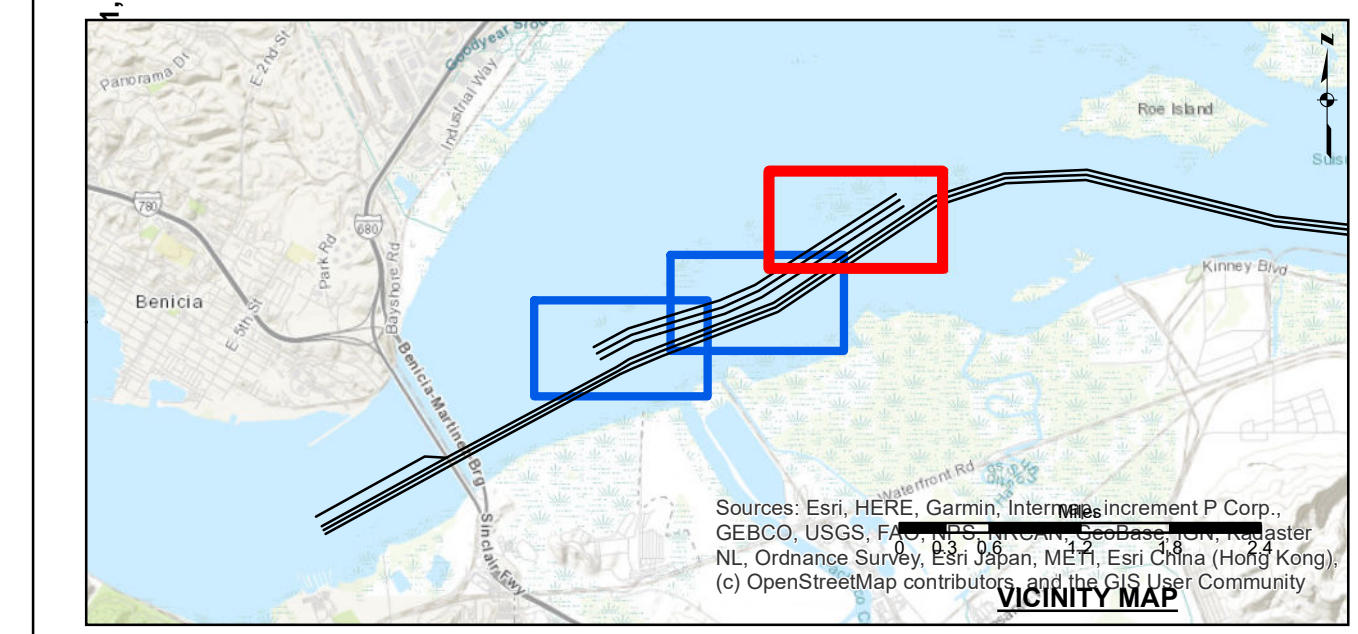
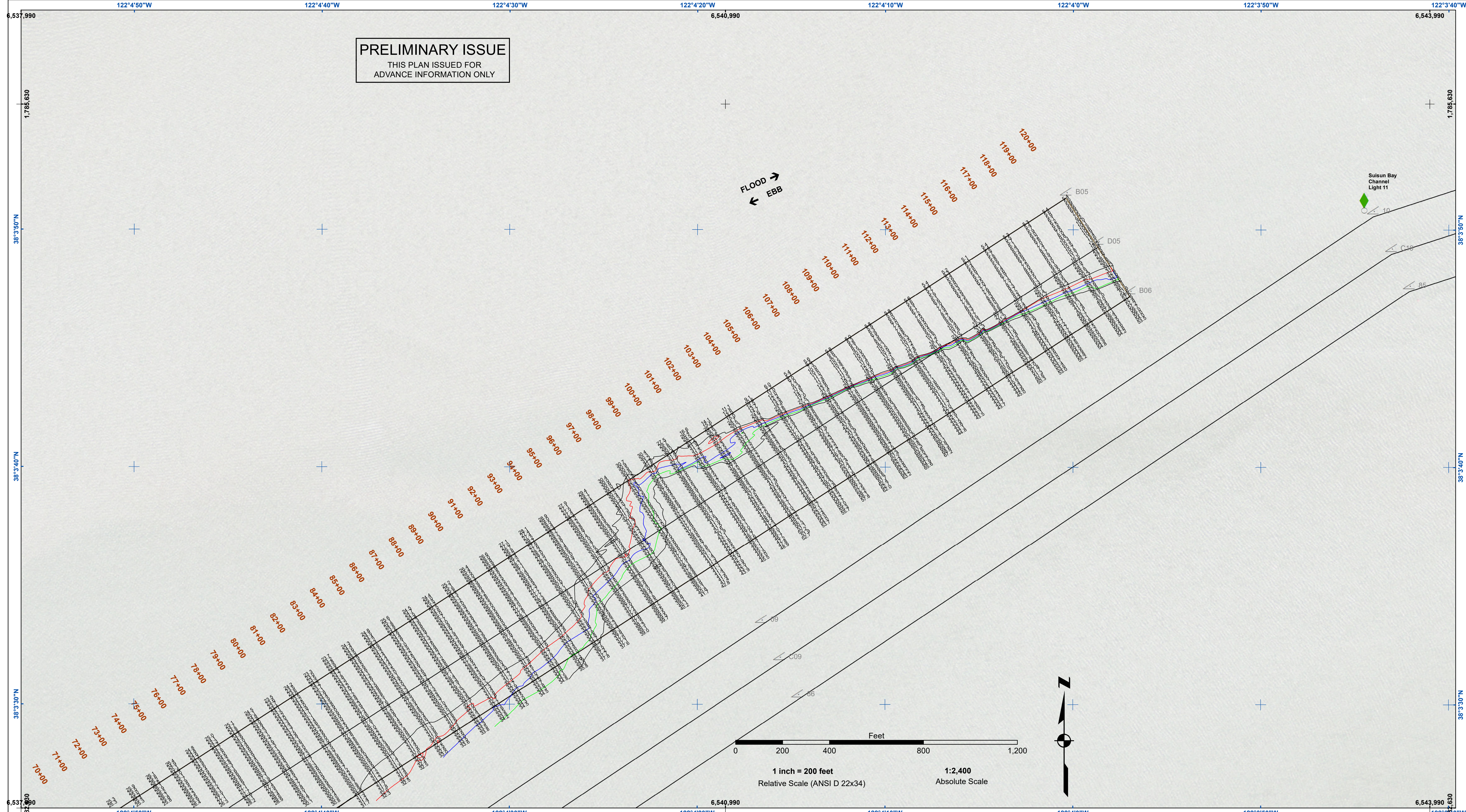
CALIFORNIA
CONTRA COSTA COUNTY
SUISUN BAY CHANNEL
DISPOSAL SITE (SF16)
CONDITION SURVEY
9 FEBRUARY 2024

**Sheet
Reference
Number
2 of 3**

PRELIMINARY ISSUE
THIS PLAN ISSUED FOR
ADVANCE INFORMATION ONLY

US Army Corps
of Engineers
San Francisco District
450 Golden Gate Ave
San Francisco, CA 94102

DISCLAIMER: The United States Government furnishes this information for use in the public domain. The user is responsible for the results of any application of the data for other than its intended purpose. The user is responsible for the results of any application of the data for other than its intended purpose. The user is responsible for the results of any application of the data for other than its intended purpose. The user is responsible for the results of any application of the data for other than its intended purpose.



Federal Navigation Channel	Beacon, General	Contours
Shoaling Area	Obstruction Point	-34
Placement Area	Navigation Buoy	-33
Anchorage Area	Navigation Buoy	-32
Wreck Area	Shoalest Sounding*	-31
Submerged Wreck		
Angle Point		

NOTES:

HORIZONTAL COORDINATE SYSTEM:
NORTH AMERICAN DATUM OF 1983 (NAD83), PROJECTED TO THE STATE PLANE COORDINATE SYSTEM (SPCS), CALIFORNIA ZONE II. DISTANCE UNITS IN U.S. SURVEY FEET.

VERTICAL DATUM:
SOUNDINGS ARE SHOWN IN FEET AND INDICATE DEPTHS BELOW MEAN LOWER LOW WATER.

THE INFORMATION DEPICTED ON THIS MAP REPRESENTS THE RESULTS OF A SURVEY CONDUCTED ON THE DATE INDICATED AND CAN ONLY BE CONSIDERED TO REPRESENT THE GENERAL CONDITION EXISTING AT THAT TIME.

PLANE GRID, BEARING AND COORDINATES ARE BASED ON THE STATE OF CALIFORNIA COORDINATE SYSTEM, LAMBERT CONFORMAL PROJECTION, ZONE II NAD 83, CALIFORNIA, AS DESCRIBED IN SPECIAL PUBLICATION NO. 235, PUBLISHED BY NATIONAL OCEAN SURVEY.

BASE MAPS ARE USDA NAIP 2010.

*SHOALEST SOUNDING PER QUARTER PER REACH

DRAWING NOT TO BE USED FOR NAVIGATION, ONLY CHANNEL CONDITION AT DATE OF SURVEY.

THE LOCATION OF ALL NAVIGATION AIDS ARE BASED ON INFORMATION PROVIDED BY THE U.S. COAST GUARD. BUOY LOCATIONS REPRESENT THE POSITION OF THE SINKER ONLY.

SURVEYED BY THE CORPS OF ENGINEERS.

SOUNDING FOR THE CHANNEL MEASURED WITH MULTIBEAM ECHOSOUNDER AND ARE SHOWN TO THE NEAREST TENTH FOOT.

SOUNDINGS ARE BASED ON THE DATUM OF MEAN LOWER LOW WATER AT THE LOCALITY.

THE PROJECT DEPTH IS 35 FEET.

VERTICAL CONTROL:
SUISUN BAY CHANNEL
(LINES 00+00 TO 160+00) BENCHMARK "9" (1948), USC&GS DISK
ELEV 14.875 FT MLLW.
TIDE GAUGE LOCATED AT PORT OF BENICIA DOCK.

(LINES 150+00 TO 500+00) BENCHMARK "5144-P" (1990 RESET 1997),
(LINES 500+00 TO 660+00) BENCHMARK "5144-P" (1990 RESET 1997),
USC&GS DISK, ELEV 11.93 FT MLLW.
TIDE GAUGE LOCATED AT CONCORD NAVAL WEAPONS STATION TUG DOCK, NOAA STATION.

(LINES 660+00 TO 733+45) BENCHMARK "5096-B",
USC&GS DISK, ELEV 21.78 FT MLLW.
TIDE GAUGE LOCATED AT DIABLO SERVICE DOCK.

HORIZONTAL GPS CONTROL: COAST GUARD D-BEACON

Chart Date:	Mar 06, 2024
Designed by:	PDT
Drawn by:	PDT
Checked by:	PDT
Approved:	Chief, Construction Branch

CALIFORNIA
CONTRA COSTA COUNTY
SUISUN BAY CHANNEL
DISPOSAL SITE (SF16)
CONDITION SURVEY
9 FEBRUARY 2024

Sheet
Reference
Number
3 of 3