

**PRELIMINARY ISSUE**  
THIS PLAN ISSUED FOR  
ADVANCE INFORMATION ONLY



FLOOD →  
← EBB

0 500 1,000 2,000 3,000  
Feet  
1 inch = 500 feet  
Relative Scale (ANSI D 22x34)  
1:6,000  
Absolute Scale

CENTERLINE ANGLE POINTS - NAD83		
CHANNEL	NORTH	EAST
C1	5948424.8258	2100405.0160
C2	5962509.9258	2105198.5160

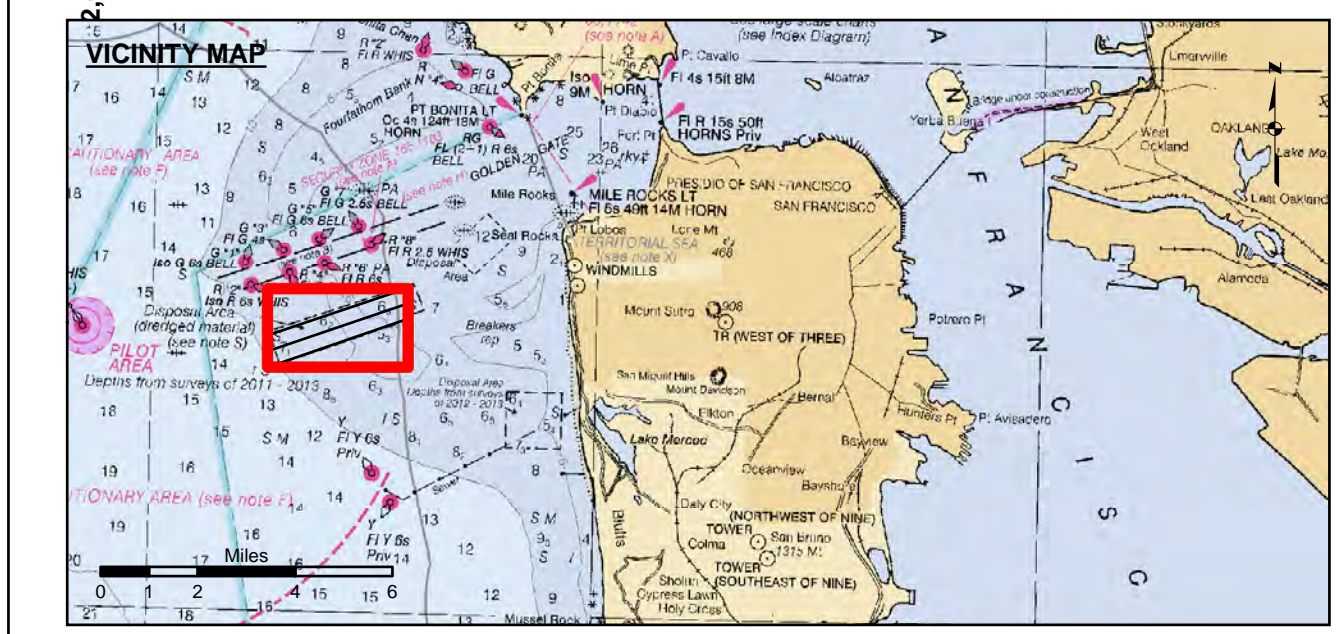
CHANNEL ANGLE POINTS - NAD83		
CHANNEL	NORTH	EAST
A	5947978.6258	2101983.2160
B	5948871.1258	2098826.8160
C	5962061.8258	2106725.9160
D	5962958.0258	2103671.1160

**US Army Corps of Engineers**  
San Francisco District  
1455 Market Street  
San Francisco, CA 94103

**DISCLAIMER**  
The United States Government furnishes the data represented by this plan for informational purposes only. The data represents the results of data collected by the United States Government. The United States Government makes no warranty, expressed or implied, concerning the accuracy, completeness, reliability, usability, or timeliness of the data. The user is responsible for the results of any application of the data for other than its intended purpose. The user is responsible for the results of any application of the data for other than its intended purpose. The user is responsible for the results of any application of the data for other than its intended purpose. The user is responsible for the results of any application of the data for other than its intended purpose.

Prepared Under the Direction of	Chart Date
LT COLONEL C.E. DISTRICT ENGINEER TRAVIS J. RAYFIELD	Nov 15, 2018
Submitted By: PDT	Designed by:
Recommended By: Hydro Survey Team Leader	Drawn by:
Approved By: Chief, Hydro Survey Section	Checked by:
Chief, Construction Branch	PDT

CALIFORNIA  
SAN FRANCISCO HARBOR  
DISPOSAL SITE - SF 8  
CONDITION SURVEY  
31 OCTOBER 2018



Federal Navigation Channel	Beacon, General	<b>Contours</b> — -50 — -40
Shoaling Area	Obstruction Point	
Placement Area	Navigation Buoy	
Anchorage Area	Navigation Buoy	
Wreck Area	Shoalest Sounding*	
Submerged Wreck		
Angle Point		

**NOTES:**  
DRAWING NOT TO BE USED FOR NAVIGATION, ONLY CHANNEL CONDITION AT DATE OF SURVEY. THE LOCATION OF ALL NAVIGATION AIDS ARE BASED ON INFORMATION PROVIDED BY THE U.S. COAST GUARD. BUOY LOCATIONS REPRESENT THE POSITION OF THE SINKER ONLY.  
SURVEYED BY THE CORPS OF ENGINEERS.  
SOUNDINGS ARE TAKEN BY FATHOMETER AND ARE SHOWN TO THE NEAREST FOOT AND TENTHS OF A FOOT.  
SOUNDINGS ARE BASED ON THE DATUM OF MEAN LOWER LOW WATER AT THE LOCALITY.

PLANE GRID AND COORDINATES ARE BASED ON LAMBERT PROJECTION, ZONE III NAD 83, CALIFORNIA, AS DESCRIBED IN SPECIAL PUBLICATION NO. 235, PUBLISHED BY NATIONAL OCEAN SURVEY.  
PROJECT DEPTH IS 55 FEET AT M.L.L.W.  
SOUNDINGS ARE BASE TIDE GAUGE LOCATED AT THE HYDE STREET PIER, SAN FRANCISCO, CALIFORNIA.  
VERTICAL CONTROL BENCHMARK "Q-481" USC&GS DISK ELEV. 19.54 FT. M.L.L.W.  
HORIZONTAL CONTROL COAST GUARD D-BEACON.

**Sheet Reference Number**  
1 of 1