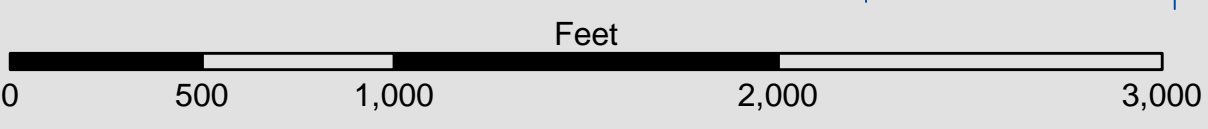


**PRELIMINARY ISSUE**  
THIS PLAN ISSUED FOR  
ADVANCE INFORMATION ONLY



FLOOD →  
← EBB



1 inch = 500 feet  
Relative Scale (ANSI D 22x34)  
1:6,000  
Absolute Scale

CENTERLINE ANGLE POINTS - NAD83		
CHANNEL	NORTH	EAST
C1	5948424.8258	2100405.0160
C2	5962509.9258	2105198.5160

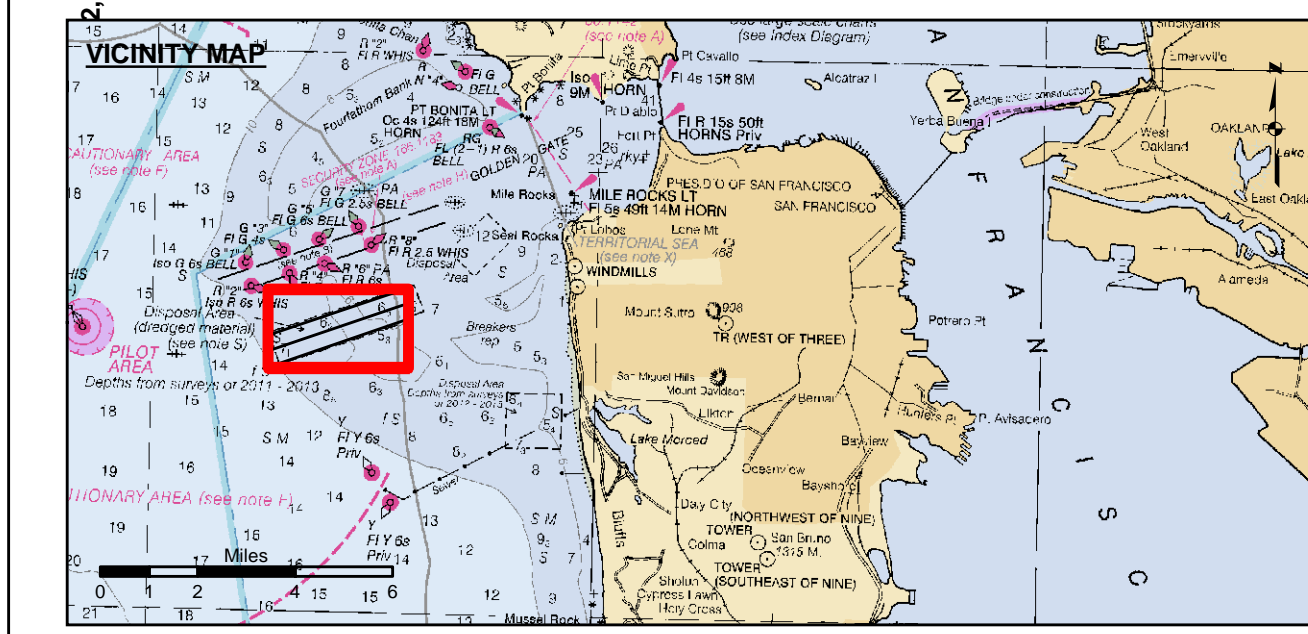
CHANNEL ANGLE POINTS - NAD83		
CHANNEL	NORTH	EAST
A	5947978.6258	2101983.2160
B	5948871.1258	2098826.8160
C	5962061.8258	2106725.9160
D	5962958.0258	2103671.1160

**US Army Corps of Engineers**  
San Francisco District  
450 Golden Gate  
San Francisco, CA 94102

**DISCLAIMER**  
The United States Government furnishes this information for your information only. It is not to be used for any purpose other than that for which it was prepared. The user is responsible for the results of any application of this information. The user is responsible for the results of any application of this information. The user is responsible for the results of any application of this information.

Prepared Under the Direction of	Chart Date	June 14, 2019
LT COLONEL C.E. DISTRICT ENGINEER	Surveyed By	
Travis J. Rayfield	Plotted By	
Hydro Survey Team Leader	Checked By	
Chief, Hydro Survey Section	Drawn by	PDT
Approved		

**CALIFORNIA**  
**SAN FRANCISCO HARBOR**  
**DISPOSAL SITE - SF 8**  
**CONDITION SURVEY**  
**11 JUNE 2019**



- Federal Navigation Channel
- Shoaling Area
- Placement Area
- Anchorage Area
- Wreck Area
- Submerged Wreck
- Angle Point
- Beacon, General
- Obstruction Point
- Navigation Buoy
- Navigation Buoy
- Shoalest Sounding\*
- Contours
- 50
- 40

**NOTES:**  
DRAWING NOT TO BE USED FOR NAVIGATION, ONLY CHANNEL CONDITION AT DATE OF SURVEY. THE LOCATION OF ALL NAVIGATION AIDS ARE BASED ON INFORMATION PROVIDED BY THE U.S. COAST GUARD. BUOY LOCATIONS REPRESENT THE POSITION OF THE SINKER ONLY.  
SURVEYED BY THE CORPS OF ENGINEERS.  
SOUNDINGS ARE TAKEN BY FATHOMETER AND ARE SHOWN TO THE NEAREST FOOT AND TENTHS OF A FOOT.  
SOUNDINGS ARE BASED ON THE DATUM OF MEAN LOWER LOW WATER AT THE LOCALITY.

PLANE GRID AND COORDINATES ARE BASED ON LAMBERT PROJECTION, ZONE III NAD 83, CALIFORNIA, AS DESCRIBED IN SPECIAL PUBLICATION NO. 235, PUBLISHED BY NATIONAL OCEAN SURVEY.  
PROJECT DEPTH IS 65 FEET AT M.L.L.W.  
SOUNDINGS ARE BASE TIDE GAUGE LOCATED AT THE HYDE STREET PIER, SAN FRANCISCO, CALIFORNIA.  
VERTICAL CONTROL BENCHMARK "Q-481" USC&GS DISK ELEV. 19.54 FT. M.L.L.W.  
HORIZONTAL CONTROL COAST GUARD D-BEACON.

**Sheet Reference Number**  
**1 of 1**