

**PRELIMINARY ISSUE**  
THIS PLAN ISSUED FOR  
ADVANCE INFORMATION ONLY



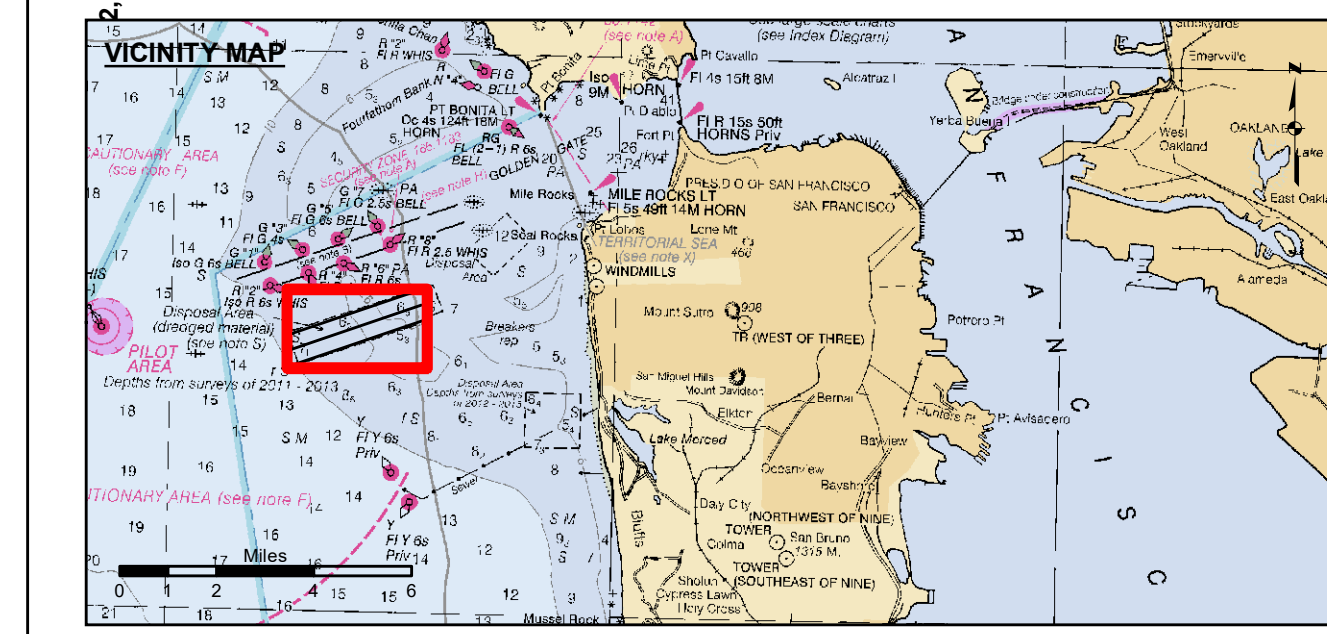
FLOOD →  
← EBB



1 inch = 500 feet  
Relative Scale (ANSI D 22x34)  
1:6,000  
Absolute Scale

CENTERLINE ANGLE POINTS - NAD83		
CHANNEL	NORTH	EAST
C1	5948424.8258	2100405.0160
C2	5962509.9258	2105198.5160

CHANNEL ANGLE POINTS - NAD83		
CHANNEL	NORTH	EAST
A	5947978.6258	2101983.2160
B	5948871.1258	2098826.8160
C	5962061.8258	2106725.9160
D	5962958.0258	2103671.1160



- Federal Navigation Channel
- Shoaling Area
- Placement Area
- Anchorage Area
- Wreck Area
- Submerged Wreck
- Angle Point
- Beacon, General
- Obstruction Point
- Navigation Buoy
- Navigation Buoy
- Shoalest Sounding\*
- Contours**
- 50
- 40

NOTES:  
DRAWING NOT TO BE USED FOR NAVIGATION, ONLY CHANNEL CONDITION AT DATE OF SURVEY.  
THE LOCATION OF ALL NAVIGATION AIDS ARE BASED ON INFORMATION PROVIDED BY THE U.S. COAST GUARD. BUOY LOCATIONS REPRESENT THE POSITION OF THE SINKER ONLY.  
SURVEYED BY THE CORPS OF ENGINEERS.  
SOUNDINGS ARE TAKEN BY FATHOMETER AND ARE SHOWN TO THE NEAREST FOOT AND TENTHS OF A FOOT.  
SOUNDINGS ARE BASED ON THE DATUM OF MEAN LOWER LOW WATER AT THE LOCALITY, NAVD 88.

PLANE GRID AND COORDINATES ARE BASED ON LAMBERT PROJECTION, ZONE III NAD 83, CALIFORNIA, AS DESCRIBED IN SPECIAL PUBLICATION NO. 235, PUBLISHED BY NATIONAL OCEAN SURVEY.  
PROJECT DEPTH IS 55 FEET AT M.L.L.W.  
SOUNDINGS ARE BASE TIDE GAUGE LOCATED AT THE HYDE STREET PIER, SAN FRANCISCO, CALIFORNIA.  
VERTICAL CONTROL BENCHMARK "Q-481" USC&GS DISK ELEV. 19.54 FT. M.L.L.W.  
HORIZONTAL CONTROL COAST GUARD D-BEACON.



**US Army Corps of Engineers**  
San Francisco District  
1455 Market Street  
San Francisco, CA 94103

**DISCLAIMER**  
The United States Government furnishes this information as a service to the public. It is not intended to be used for any purpose other than that for which it was prepared. The United States Government makes no warranty, expressed or implied, concerning the accuracy, completeness, or reliability of the information. The user is responsible for the results of any application of the information. The user shall indemnify and hold the United States Government harmless from any and all claims, damages, and expenses, including reasonable attorneys' fees, that may be incurred by the United States Government as a result of the use of the information. These data belong to the Government. Therefore the recipient may not transfer these data to others without also transferring this Disclaimer.

Chart Date:	May 26, 2022
Surveyed By:	LT COLONEL C.E. DISTRICT ENGINEER KEVIN P. ARNETT
Plotted By:	PDT
Designed By:	Hydro Survey Team Leader
Checked By:	Chief, Hydro Survey Section
Drawn by:	PDT
Approved:	Chief, Construction Branch

CALIFORNIA  
SAN FRANCISCO HARBOR  
DISPOSAL SITE - SF 8  
CONDITION SURVEY  
24-25 MAY 2022

**Sheet Reference Number**  
1 of 1