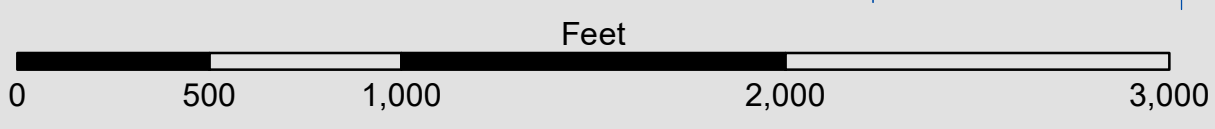


PRELIMINARY ISSUE
THIS PLAN ISSUED FOR
ADVANCE INFORMATION ONLY



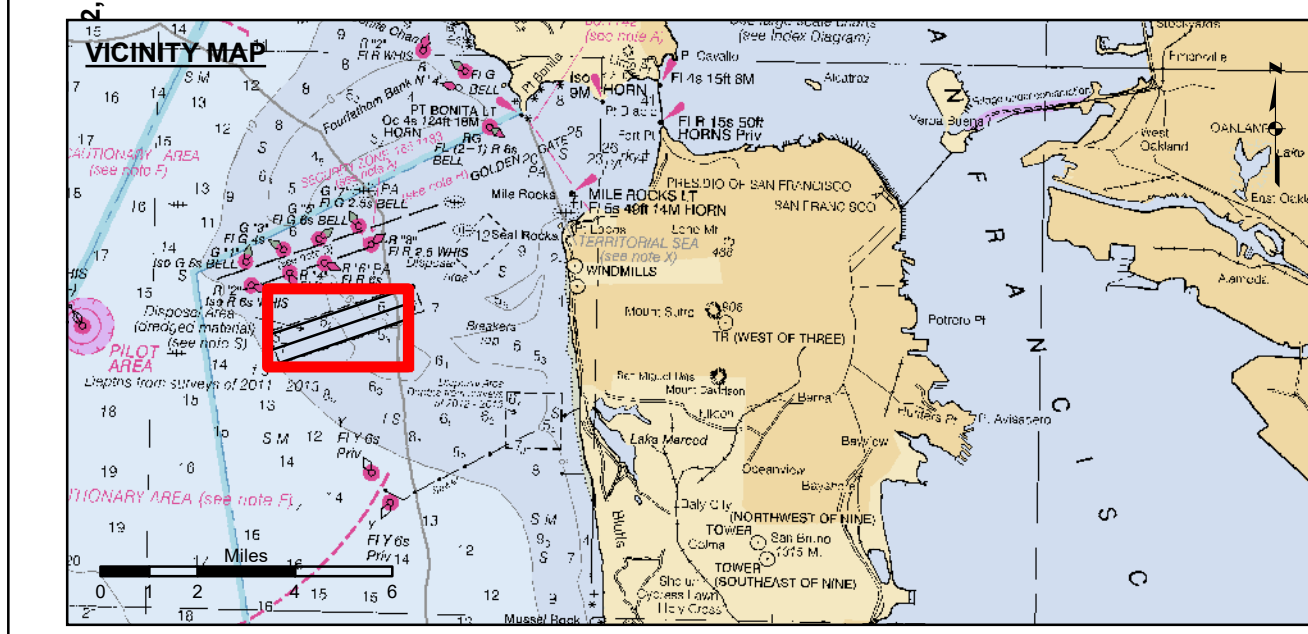
FLOOD →
← EBB



1 inch = 500 feet
Relative Scale (ANSI D 22x34) 1:6,000
Absolute Scale

CENTERLINE ANGLE POINTS - NAD83		
CHANNEL	NORTH	EAST
C1	5948424.8258	2100405.0160
C2	5962509.9258	2105198.5160

CHANNEL ANGLE POINTS - NAD83		
CHANNEL	NORTH	EAST
A	5947978.6258	2101983.2160
B	5948871.1258	2098826.8160
C	5962061.8258	2106725.9160
D	5962958.0258	2103671.1160



- Federal Navigation Channel
- Shoaling Area
- Placement Area
- Anchorage Area
- Wreck Area
- Submerged Wreck
- Angle Point
- Beacon, General
- Obstruction Point
- Navigation Buoy
- Navigation Buoy
- Shoalest Sounding*
- Contours**
- 50
- 40

NOTES:
DRAWING NOT TO BE USED FOR NAVIGATION. ONLY CHANNEL CONDITION AT DATE OF SURVEY.
THE LOCATION OF ALL NAVIGATION AIDS ARE BASED ON INFORMATION PROVIDED BY THE U.S.
COAST GUARD. BUOY LOCATIONS REPRESENT THE POSITION OF THE SINKER ONLY.
SURVEYED BY THE CORPS OF ENGINEERS.
SOUNDING FOR THE CHANNEL MEASURED WITH MULTIBEAM ECHOSOUNDER AND ARE SHOWN TO THE
NEAREST TENTH FOOT.
SOUNDINGS ARE BASED ON THE DATUM OF MEAN LOWER LOW WATER AT THE LOCALITY.

PLANE GRID AND COORDINATES ARE BASED ON LAMBERT
PROJECTION, ZONE III NAD 83,
CALIFORNIA, AS DESCRIBED IN SPECIAL PUBLICATION NO. 235, PUBLISHED BY NATIONAL OCEAN SURVEY.
PROJECT DEPTH IS 55 FEET AT M.L.L.W.
SOUNDINGS ARE BASE TIDE GAUGE LOCATED AT THE HYDE STREET PIER, SAN FRANCISCO, CALIFORNIA.
VERTICAL CONTROL
BENCHMARK "Q-481" USC&GS DISK ELEV. 19.54 FT. M.L.L.W.
HORIZONTAL CONTROL
COAST GUARD D-BEACON.



US Army Corps
of Engineers
San Francisco District
450 Golden Gate Avenue
San Francisco, CA 94102

DISCLAIMER
The United States Government furnishes this information for the general public and does not warrant, express or implied, the accuracy, completeness, or reliability of the data. The user is responsible for the results of any application of the data for other than its intended purpose.
The United States Government makes no warranty, express or implied, concerning the accuracy, completeness, or reliability of the data. The user is responsible for the results of any application of the data for other than its intended purpose.
The United States Government makes no warranty, express or implied, concerning the accuracy, completeness, or reliability of the data. The user is responsible for the results of any application of the data for other than its intended purpose.

Prepared Under the Direction of TIMOTHY W. SHEBESTA LT COLONEL, C.E., DISTRICT ENGINEER	Chart Date: Jul 02, 2024
Submitted: Hydro Survey Team Leader	Designed by: PDT
Recommended: Chief, Hydro Survey Section	Drawn by: PDT
Approved: Chief, Construction Branch	

CALIFORNIA
SAN FRANCISCO HARBOR
DISPOSAL SITE - SF 8
CONDITION SURVEY
18 APRIL 2024

**Sheet
Reference
Number
1 of 1**