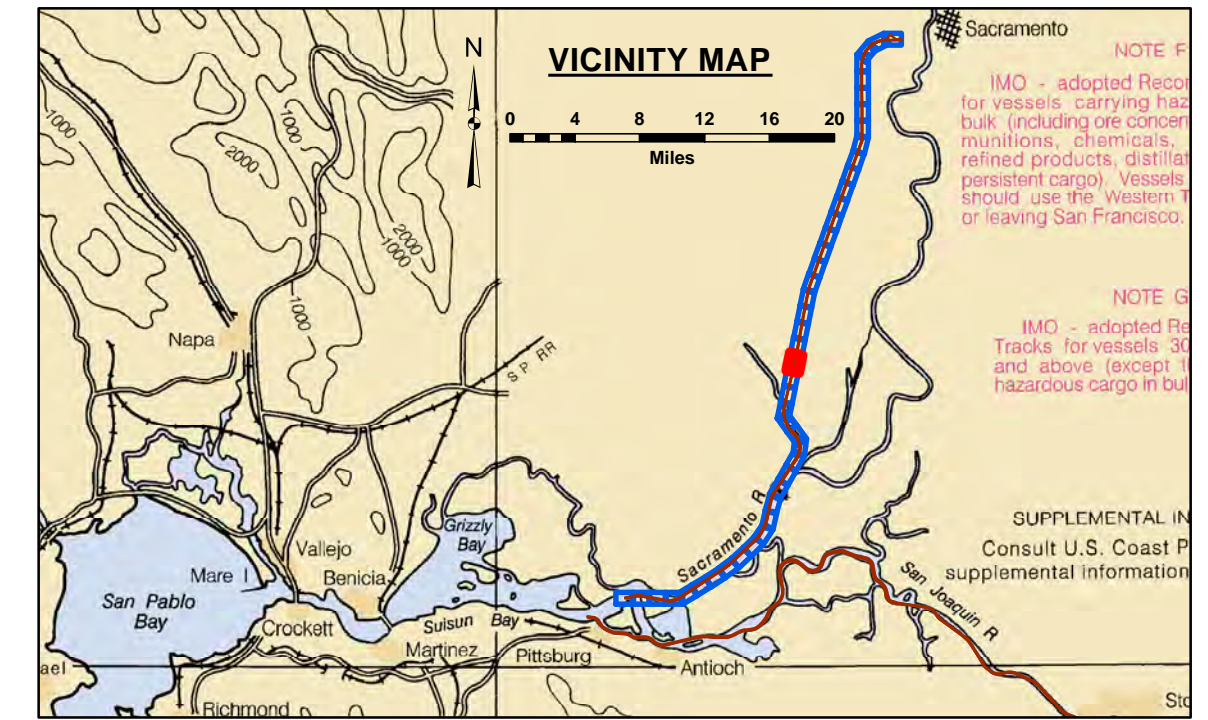


DISCLAIMER: The data represents the results of data collection/processing for a specific US Army Corps of Engineers project. The user is responsible for the results of any application of the data for other than its intended purpose. The user is responsible for the results of any application of the data for other than its intended purpose. The user is responsible for the results of any application of the data for other than its intended purpose.

Chart Date:	Sep 07, 2017
Designed by:	PDT
Drawn by:	PDT
Surveyed By:	Travis J. Rayfield
Plotted By:	PDT
Checked By:	PDT

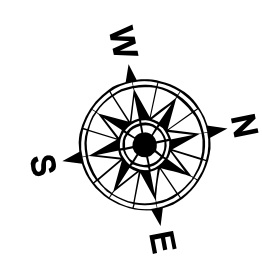
SAN JOAQUIN COUNTY
SACRAMENTO RIVER
 CONDITION SURVEY
 05 SEPTEMBER 2017

Sheet Reference Number
23 of 45



0 400 800 1,200 Feet

LEGEND		
--- Federal Navigation Channel	▨ Cable Area	■ Shoaling Area
— Federal Navigation Center Line	□ Placement Area	● Shoalest Sounding**
..... Cable Submarine	⊠ Anchorage Area	⊥ Beacon, General
- - - Cable Overhead	⊗ Obstruction Point	◆ Red Navigation Buoy
— Contour Line	✈ Wrecks-Submerged	◆ Green Navigation Buoy

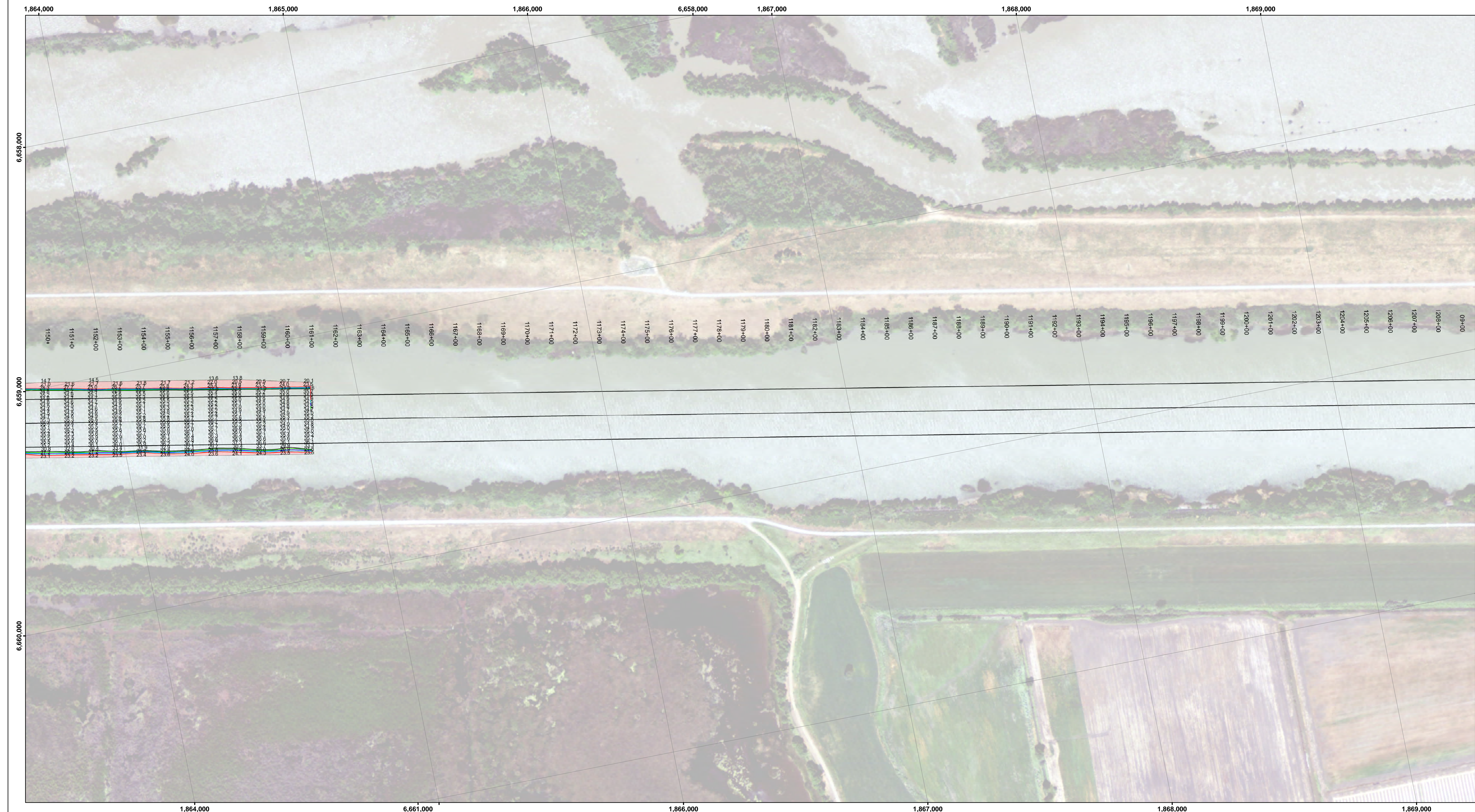


NOTES:
 DRAWING NOT TO BE USED FOR NAVIGATION. ONLY CHANNEL CONDITION AT DATE OF SURVEY.
 THE LOCATION OF ALL NAVIGATION AIDS ARE BASED ON INFORMATION PROVIDED BY THE U.S. COAST GUARD. BUOY LOCATIONS REPRESENT THE POSITION OF THE SINKER ONLY.
 SOUNDINGS WERE TAKEN BY FATHOMETER AND ARE SHOWN TO THE NEAREST TENTH OF A FOOT.
 SOUNDINGS ARE BASED ON THE DATUM OF MEAN LOWER LOW WATER AT THE LOCALITY.
 NORTH AMERICAN DATUM OF 1983 (NAD83), PROJECTED TO THE STATE PLANE COORDINATE SYSTEM (SPCS), CA ZONE II (0402). DISTANCE UNITS IN U.S. SURVEY FEET.
 PLANE GRID AND COORDINATES ARE BASED ON LAMBERT PROJECTION, NAD 83, ZONE II CALIFORNIA AS DESCRIBED IN SPECIAL PUBLICATION NO. 235, PUBLISHED BY THE NATIONAL OCEAN SURVEY.
 PROJECT DEPTH: -30'
 VERTICAL DATUM: MLLW
 THE LOCATION OF NAVIGATION AIDS ARE BASED ON AND PROVIDED BY THE U.S. COAST GUARD

CONTROLS:
 LOCATION: RIO VISTA
 NOAA STATION: 9415316
 BENCHMARK: 5316 B 1996 (NO PID)
 TIDE GAUGE: NAIL @ 8.2 FT MLLW
 METADATA: NAIL SET BY USACE 31 MARCH, 2014

LOCATION: PORT OF WEST SACRAMENTO
 NOAA STATION: 9416131
 BENCHMARK: POWS1 (NO PID)
 TIDE GAUGE: NAIL @ 10.0 FT MLLW
 METADATA: NAIL SET BY USACE 8 APRIL, 2014

ALL HORIZONTAL POSITIONS AND MLLW ELEVATIONS WERE POST-PROCESSED USING PUBLIC GPS REFERENCE STATIONS IN THE AREA.



DISCLAIMER: The data represents the results of data collection/processing for a specific US Army Corps of Engineers project. It is not intended for use in any other project. The user is responsible for the results of any application of the data for other than its intended purpose. The user is not responsible for the results of any application of the data for other than its intended purpose.

ACCESS CONSTRAINTS: The United States Government furnishes this data for the use of the US Army Corps of Engineers. It is not intended for use in any other project. The user is responsible for the results of any application of the data for other than its intended purpose. The user is not responsible for the results of any application of the data for other than its intended purpose.

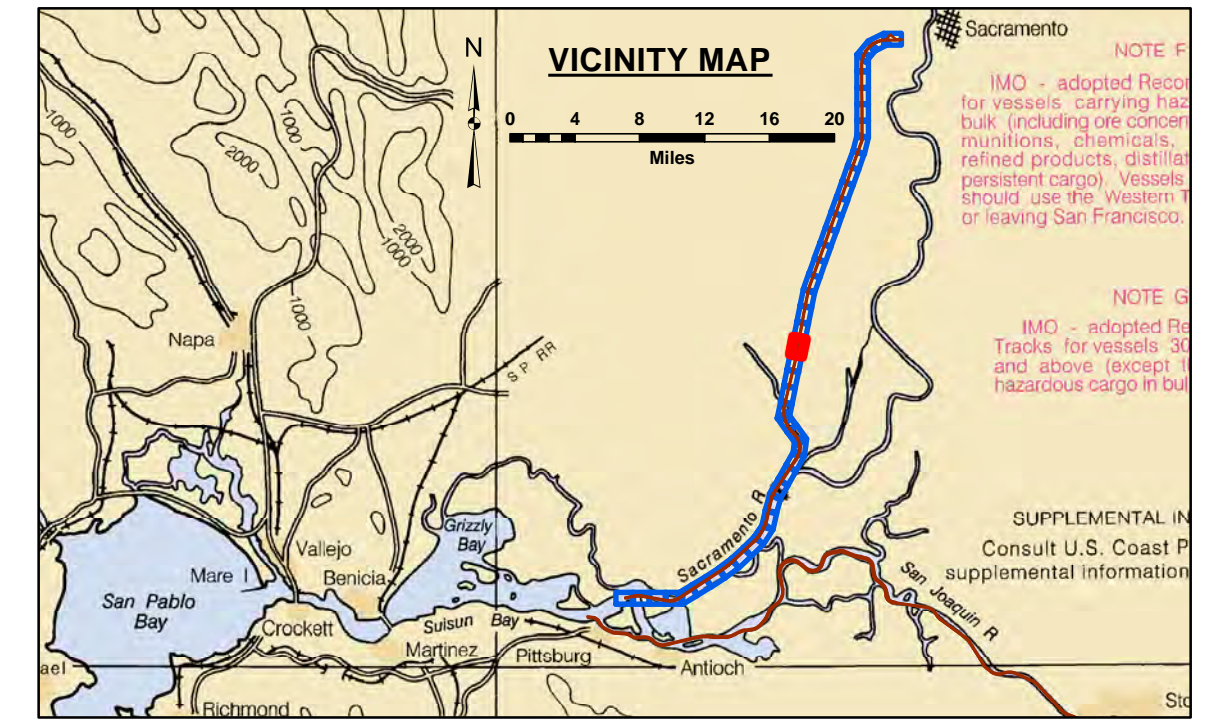
Chart Date:	Sep 07, 2017
Designed By:	PDT
Drawn By:	PDT
Surveyed By:	PDT
Plotted By:	PDT
Checked By:	PDT

PREPARED UNDER THE DIRECTION OF
TRAVIS J. RAYFIELD
 LT. COLONEL, C.E. DISTRICT ENGINEER

Suggested: Hydro Survey Team Leader
 Recommended: Chief, Hydro Survey Section
 Approved: Chief, Construction Branch

CALIFORNIA
 SAN JOAQUIN COUNTY
SACRAMENTO RIVER
 CONDITION SURVEY
 05 SEPTEMBER 2017

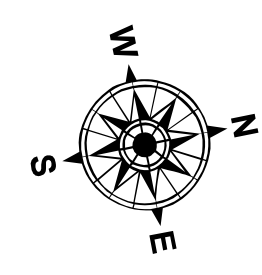
Sheet Reference Number
24 of 45



0 400 800 1,200 Feet

LEGEND

--- Federal Navigation Channel	▨ Cable Area	■ Shoaling Area
— Federal Navigation Center Line	□ Placement Area	● Shoalest Sounding**
..... Cable Submarine	⊠ Anchorage Area	⊥ Beacon, General
- - - Cable Overhead	⊗ Obstruction Point	◆ Red Navigation Buoy
— Contour Line	✈ Wrecks-Submerged	◆ Green Navigation Buoy



NOTES:
 DRAWING NOT TO BE USED FOR NAVIGATION. ONLY CHANNEL CONDITION AT DATE OF SURVEY.
 THE LOCATION OF ALL NAVIGATION AIDS ARE BASED ON INFORMATION PROVIDED BY THE U.S. COAST GUARD. BUOY LOCATIONS REPRESENT THE POSITION OF THE SINKER ONLY.
 SOUNDINGS WERE TAKEN BY FATHOMETER AND ARE SHOWN TO THE NEAREST TENTH OF A FOOT.
 SOUNDINGS ARE BASED ON THE DATUM OF MEAN LOWER LOW WATER AT THE LOCALITY.
 NORTH AMERICAN DATUM OF 1983 (NAD83), PROJECTED TO THE STATE PLANE COORDINATE SYSTEM (SPCS), CA ZONE II (0402). DISTANCE UNITS IN U.S. SURVEY FEET.
 PLANE GRID AND COORDINATES ARE BASED ON LAMBERT PROJECTION, NAD 83, ZONE II, CALIFORNIA AS DESCRIBED IN SPECIAL PUBLICATION NO. 235, PUBLISHED BY THE NATIONAL OCEAN SURVEY.
 PROJECT DEPTH: -30'
 VERTICAL DATUM: MLLW
 THE LOCATION OF NAVIGATION AIDS ARE BASED ON AND PROVIDED BY THE U.S. COAST GUARD

CONTROLS:
 LOCATION: RIO VISTA
 NOAA STATION: 9415316
 BENCHMARK: 5316 B 1996 (NO PID)
 TIDE GAUGE: NAIL @ 8.2 FT MLLW
 METADATA: NAIL SET BY USACE 31 MARCH, 2014

LOCATION: PORT OF WEST SACRAMENTO
 NOAA STATION: 9416131
 BENCHMARK: POWS1 (NO PID)
 TIDE GAUGE: NAIL @ 10.0 FT MLLW
 METADATA: NAIL SET BY USACE 8 APRIL, 2014

ALL HORIZONTAL POSITIONS AND MLLW ELEVATIONS WERE POST-PROCESSED USING PUBLIC GPS REFERENCE STATIONS IN THE AREA.