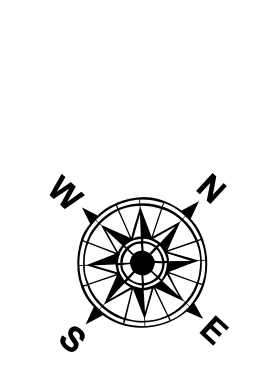


Feet
0 400 800 1,200

LEGEND		
--- Federal Navigation Channel	▨ Cable Area	■ Shoaling Area
— Federal Navigation Center Line	□ Placement Area	● Shoalest Sounding**
..... Cable Submarine	⊠ Anchorage Area	⊥ Beacon, General
- - - Cable Overhead	⊗ Obstruction Point	◆ Red Navigation Buoy
— Contour Line	✈ Wrecks-Submerged	◇ Green Navigation Buoy



NOTES:
DRAWING NOT TO BE USED FOR NAVIGATION. ONLY CHANNEL CONDITION AT DATE OF SURVEY.
THE LOCATION OF ALL NAVIGATION AIDS ARE BASED ON INFORMATION PROVIDED BY THE U.S. COAST GUARD. BUOY LOCATIONS REPRESENT THE POSITION OF THE SINKER ONLY.
SOUNDINGS WERE TAKEN BY FATHOMETER AND ARE SHOWN TO THE NEAREST TENTH OF A FOOT.
SOUNDINGS ARE BASED ON THE DATUM OF MEAN LOWER LOW WATER AT THE LOCALITY.
NORTH AMERICAN DATUM OF 1983 (NAD83), PROJECTED TO THE STATE PLANE COORDINATE SYSTEM (SPCS), CA ZONE II (0402). DISTANCE UNITS IN U.S. SURVEY FEET.
PROJECT DEPTH: -30'
VERTICAL DATUM: MLLW
THE LOCATION OF NAVIGATION AIDS ARE BASED ON AND PROVIDED BY THE U.S. COAST GUARD

CONTROLS:
LOCATION: RIO VISTA
NOAA STATION: 9415316
BENCHMARK: 5316 B 1996 (NO PID)
TIDE GAUGE: NAIL @ 8.2 FT MLLW
METADATA: NAIL SET BY USACE 31 MARCH, 2014
LOCATION: PORT OF WEST SACRAMENTO
NOAA STATION: 9416131
BENCHMARK: POWS1 (No PID)
TIDE GAUGE: NAIL @ 10.0 FT MLLW
METADATA: NAIL SET BY USACE 8 APRIL, 2014
ALL HORIZONTAL POSITIONS AND MLLW ELEVATIONS WERE POST-PROCESSED USING PUBLIC GPS REFERENCE STATIONS IN THE AREA.

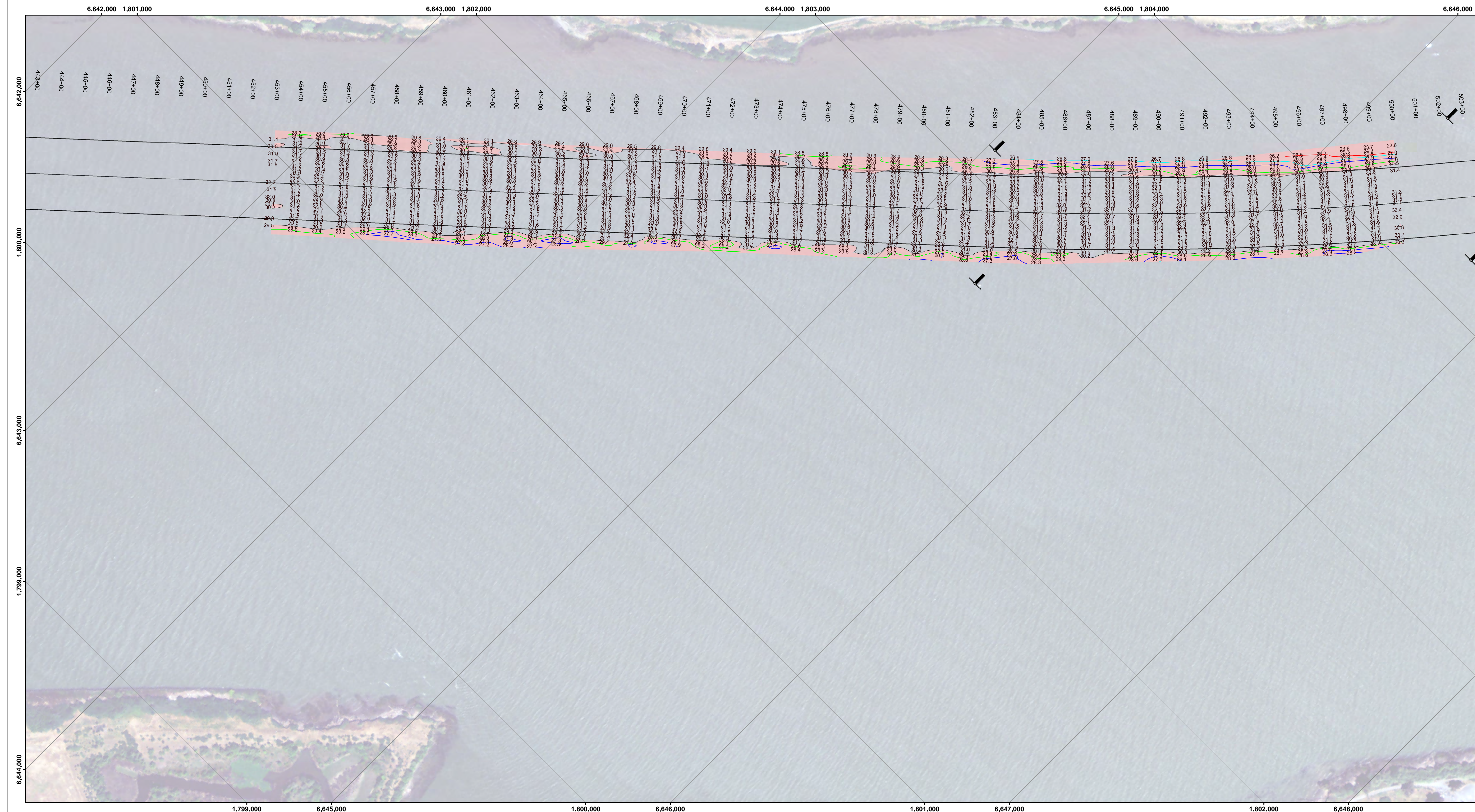


DISCLAIMER
The United States Government furnishes these data and the information contained therein as a public service. It is not responsible for the results of any use of the information for purposes other than those intended. The user assumes all liability for any use of the information for purposes other than those intended. The user assumes all liability for any use of the information for purposes other than those intended. The user assumes all liability for any use of the information for purposes other than those intended.

Chart Date:	Jan 13, 2020
Designed by:	PDT
Drawn by:	PDT
Surveyed By:	PDT
Plotted By:	PDT
Checked By:	PDT
Approved:	Chief, Hydro Survey Section
Approved:	Chief, Construction Branch

CALIFORNIA
SAN JOAQUIN COUNTY
SACRAMENTO RIVER
POST-DREDGE SURVEY
22. 29 AUGUST AND 11, 19 SEPTEMBER 2019

Sheet Reference Number
9 of 45

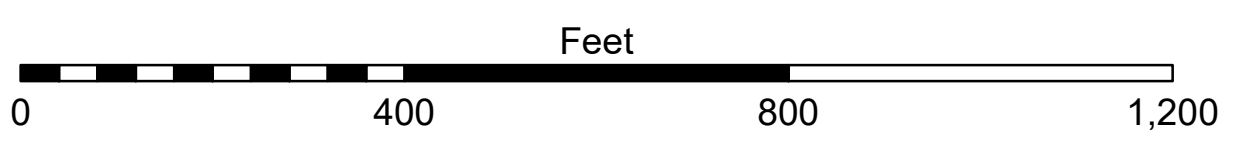
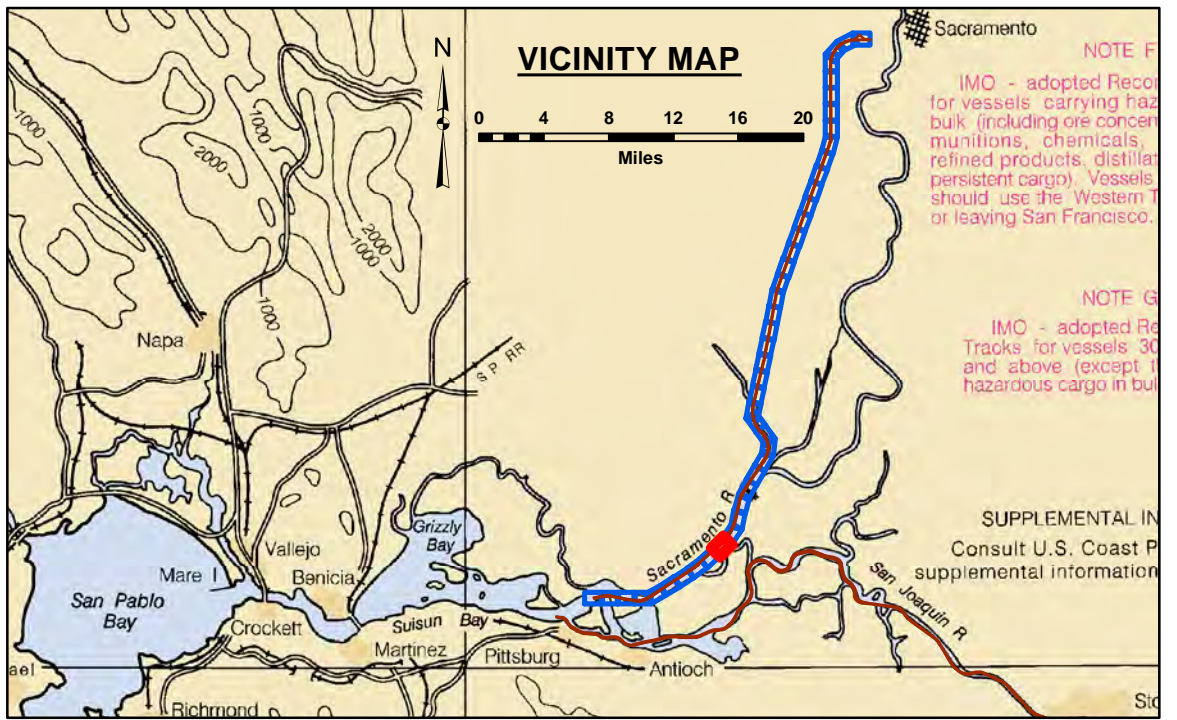


DISCLAIMER: The data represents the results of data collection/processing for a specific US Army Corps of Engineers project. It is not intended for use in any other project. The user is responsible for the results of any application of the data for other than its intended purpose.

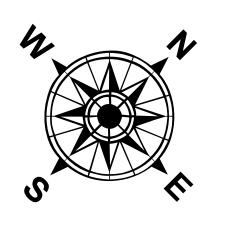
ACCESS CONTAINERS: The United States Government furnishes these data and the US Coast Guard uses them with the express understanding that neither the US Coast Guard nor the US Army Corps of Engineers is responsible for the accuracy, completeness, or implied consequences of the data. The United States shall be under no liability whatsoever to any person by reason of any use of the data, in whole or in part, for any purpose other than that for which it was originally prepared. The recipient may not transfer these data to others without also transferring this Disclaimer.

Chart Date:	Jan 13, 2020
Designed by:	
Drawn by:	PDT
Surveyed By:	
Plotted By:	PDT
Checked By:	PDT
Approved:	
Chief, Construction Branch	

CALIFORNIA
 SAN JOAQUIN COUNTY
SACRAMENTO RIVER
 POST-DREDGE SURVEY
 22, 29 AUGUST AND 11, 19 SEPTEMBER 2019



LEGEND		
--- Federal Navigation Channel	▨ Cable Area	■ Shoaling Area
— Federal Navigation Center Line	□ Placement Area	● Shoalest Sounding**
..... Cable Submarine	⊠ Anchorage Area	⊥ Beacon, General
- - - Cable Overhead	⊗ Obstruction Point	◆ Red Navigation Buoy
— Contour Line	✈ Wrecks-Submerged	◇ Green Navigation Buoy

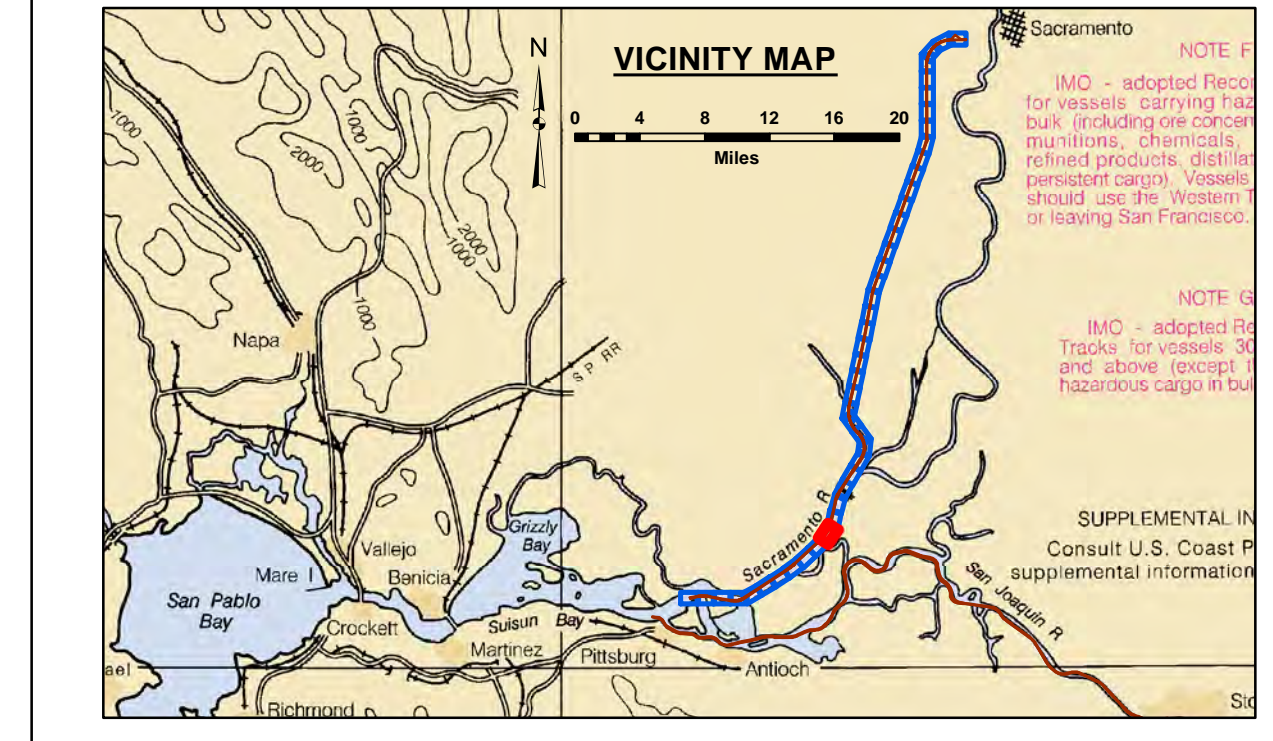
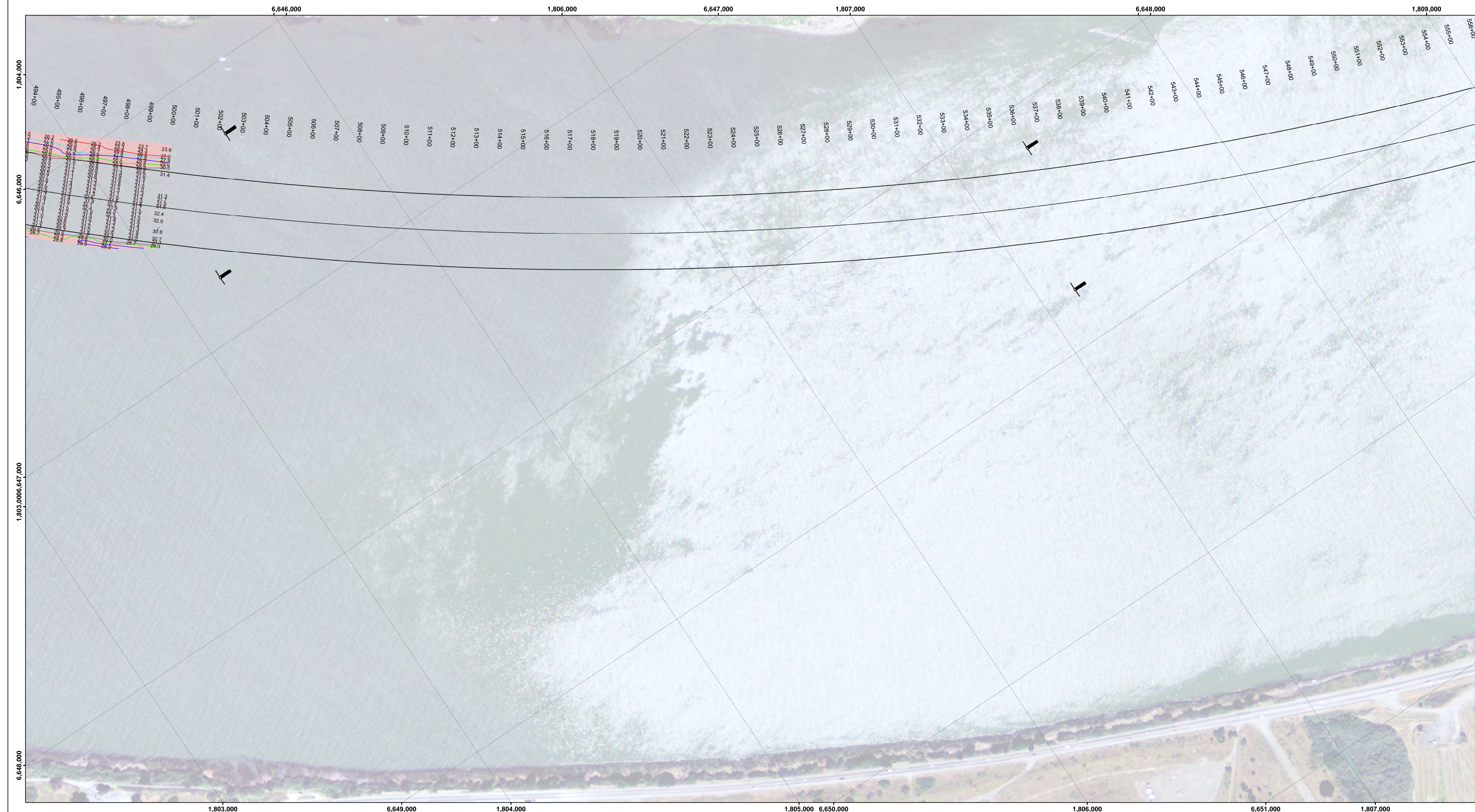


NOTES:
 DRAWING NOT TO BE USED FOR NAVIGATION. ONLY CHANNEL CONDITION AT DATE OF SURVEY.
 THE LOCATION OF ALL NAVIGATION AIDS ARE BASED ON INFORMATION PROVIDED BY THE U.S. COAST GUARD. BUOY LOCATIONS REPRESENT THE POSITION OF THE SINKER ONLY.
 SOUNDINGS WERE TAKEN BY FATHOMETER AND ARE SHOWN TO THE NEAREST TENTH OF A FOOT.
 SOUNDINGS ARE BASED ON THE DATUM OF MEAN LOWER LOW WATER AT THE LOCALITY.
 NORTH AMERICAN DATUM OF 1983 (NAD83), PROJECTED TO THE STATE PLANE COORDINATE SYSTEM (SPCS), CA ZONE II (0402). DISTANCE UNITS IN U.S. SURVEY FEET.
 PLANE GRID AND COORDINATES ARE BASED ON LAMBERT PROJECTION, NAD 83, ZONE II, CALIFORNIA AS DESCRIBED IN SPECIAL PUBLICATION NO. 235, PUBLISHED BY THE NATIONAL OCEAN SURVEY.
 PROJECT DEPTH: -30'
 VERTICAL DATUM: MLLW
 THE LOCATION OF NAVIGATION AIDS ARE BASED ON AND PROVIDED BY THE U.S. COAST GUARD

CONTROLS:
 LOCATION: RIO VISTA
 NOAA STATION: 9415316
 BENCHMARK: 5316 B 1996 (NO PID)
 TIDE GAUGE: NAIL @ 8.2 FT MLLW
 METADATA: NAIL SET BY USACE 31 MARCH, 2014

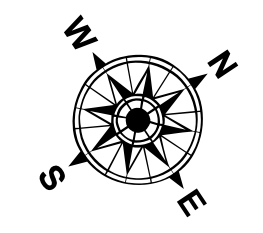
LOCATION: PORT OF WEST SACRAMENTO
 NOAA STATION: 9416131
 BENCHMARK: POWS1 (NO PID)
 TIDE GAUGE: NAIL @ 10.0 FT MLLW
 METADATA: NAIL SET BY USACE 8 APRIL, 2014

ALL HORIZONTAL POSITIONS AND MLLW ELEVATIONS WERE POST-PROCESSED USING PUBLIC GPS REFERENCE STATIONS IN THE AREA.



LEGEND

--- Federal Navigation Channel	▨ Cable Area	■ Shoaling Area
— Federal Navigation Center Line	□ Placement Area	● Shoalest Sounding**
..... Cable Submarine	⊠ Anchorage Area	⊥ Beacon, General
- - - Cable Overhead	⊗ Obstruction Point	◆ Red Navigation Buoy
— Contour Line	✈ Wrecks-Submerged	◇ Green Navigation Buoy



NOTES:
 DRAWING NOT TO BE USED FOR NAVIGATION. ONLY CHANNEL CONDITION AT DATE OF SURVEY.
 THE LOCATION OF ALL NAVIGATION AIDS ARE BASED ON INFORMATION PROVIDED BY THE U.S. COAST GUARD. BUOY LOCATIONS REPRESENT THE POSITION OF THE SINKER ONLY.
 SOUNDINGS WERE TAKEN BY FATHOMETER AND ARE SHOWN TO THE NEAREST TENTH OF A FOOT.
 SOUNDINGS ARE BASED ON THE DATUM OF MEAN LOWER LOW WATER AT THE LOCALITY.
 NORTH AMERICAN DATUM OF 1983 (NAD83), PROJECTED TO THE STATE PLANE COORDINATE SYSTEM (SPCS), CA ZONE II (0402). DISTANCE UNITS IN U.S. SURVEY FEET.
 PLANE GRID AND COORDINATES ARE BASED ON LAMBERT PROJECTION, NAD 83, ZONE II, CALIFORNIA AS DESCRIBED IN SPECIAL PUBLICATION NO. 235, PUBLISHED BY THE NATIONAL OCEAN SURVEY.
 PROJECT DEPTH: -30'
 VERTICAL DATUM: MLLW
 THE LOCATION OF NAVIGATION AIDS ARE BASED ON AND PROVIDED BY THE U.S. COAST GUARD

CONTROLS:
 LOCATION: RIO VISTA
 NOAA STATION: 9415316
 BENCHMARK: 5316 B 1996 (NO PID)
 TIDE GAUGE: NAIL @ 8.2 FT MLLW
 METADATA: NAIL SET BY USACE 31 MARCH, 2014

LOCATION: PORT OF WEST SACRAMENTO
 NOAA STATION: 9416131
 BENCHMARK: POWS1 (NO PID)
 TIDE GAUGE: NAIL @ 10.0 FT MLLW
 METADATA: NAIL SET BY USACE 8 APRIL, 2014

ALL HORIZONTAL POSITIONS AND MLLW ELEVATIONS WERE POST-PROCESSED USING PUBLIC GPS REFERENCE STATIONS IN THE AREA.



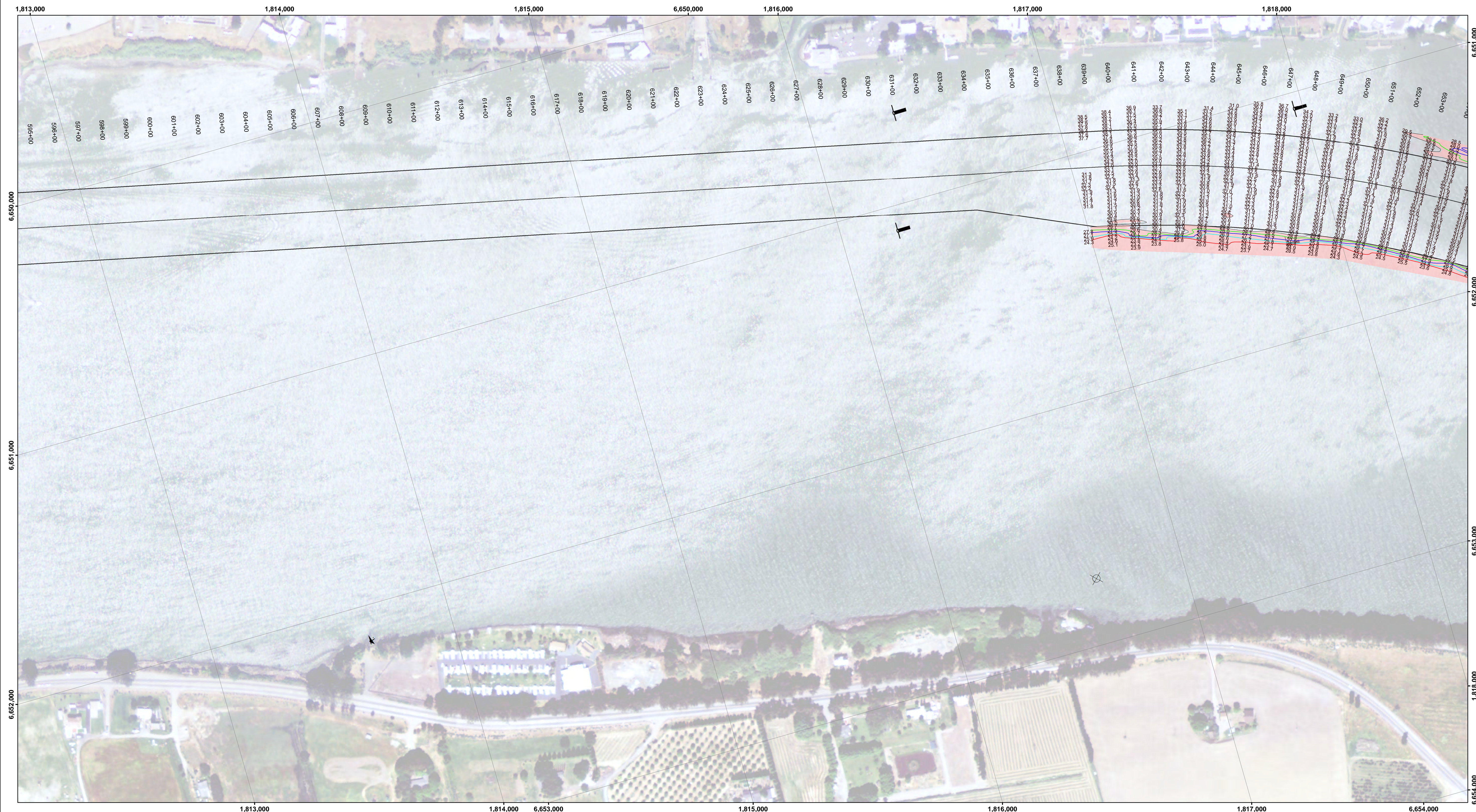
DISCLAIMER: The United States Government furnishes these data and the U.S. Coast Guard uses them with the express understanding that the U.S. Coast Guard does not warrant, express or implied, concerning the accuracy, completeness, timeliness, or any other aspect of the data. The user is responsible for the results of any application of the data for other than its intended purpose.

ACCESS CONSTRAINTS: The United States Government furnishes these data and the U.S. Coast Guard uses them with the express understanding that the U.S. Coast Guard does not warrant, express or implied, concerning the accuracy, completeness, timeliness, or any other aspect of the data. The user is responsible for the results of any application of the data for other than its intended purpose.

Prepared Under the Direction of TRAVIS J. RAYFIELD LT Colonel, C.E. District Engineer	Chart Date: Jan 13, 2020
Submittal: Hydro Survey Team Leader	Designed by: PDT
Recommended: Chief, Hydro Survey Section	Plotted by: PDT
Approved: Chief, Construction Branch	Checked by: PDT
Drawn by: PDT	Drawn by: PDT

CALIFORNIA
 SAN JOAQUIN COUNTY
SACRAMENTO RIVER
 POST-DREDGE SURVEY
 22. 29 AUGUST AND 11, 19 SEPTEMBER 2019

Sheet
 Reference
 Number
11 of 45

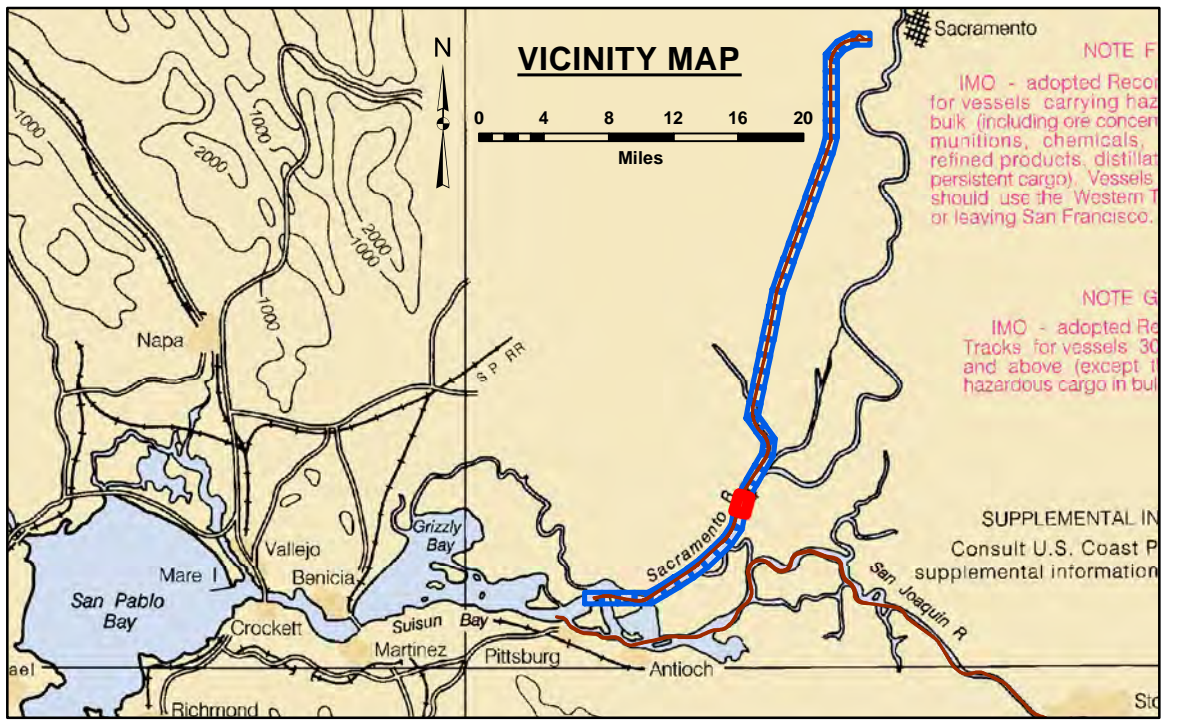


DISCLAIMER: The United States Government furnishes these data and the US Coast Guard uses them with the express understanding that the US Coast Guard is not responsible for the accuracy or implied concerning the accuracy, completeness, or information and the data furnished. The United States shall be under no liability whatsoever to any person by reason of any use of these data and the US Coast Guard shall be responsible for the results of any application of the data for other than its intended purposes.

Access Constraints: The United States Government furnishes these data and the US Coast Guard uses them with the express understanding that the US Coast Guard is not responsible for the accuracy or implied concerning the accuracy, completeness, or information and the data furnished. The United States shall be under no liability whatsoever to any person by reason of any use of these data and the US Coast Guard shall be responsible for the results of any application of the data for other than its intended purposes.

Chart Date:	Jan 13, 2020
Designed by:	
Drawn by:	PDT
Surveyed By:	
Plotted By:	PDT
Checked By:	PDT
Approved:	
Chief, Hydro Survey Section	
Chief, Construction Branch	

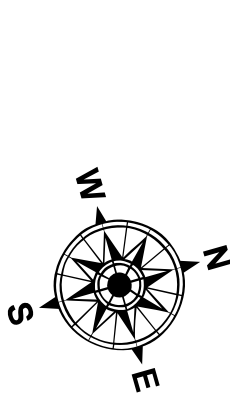
CALIFORNIA
SACRAMENTO RIVER
 POST-DREDGE SURVEY
 22, 29 AUGUST AND 11, 19 SEPTEMBER 2019



0 400 800 1,200 Feet

LEGEND

--- Federal Navigation Channel	▨ Cable Area	■ Shoaling Area
— Federal Navigation Center Line	□ Placement Area	● Shoalest Sounding**
..... Cable Submarine	⊠ Anchorage Area	⊥ Beacon, General
- - - Cable Overhead	⊗ Obstruction Point	◆ Red Navigation Buoy
— Contour Line	★ Wrecks-Submerged	◇ Green Navigation Buoy

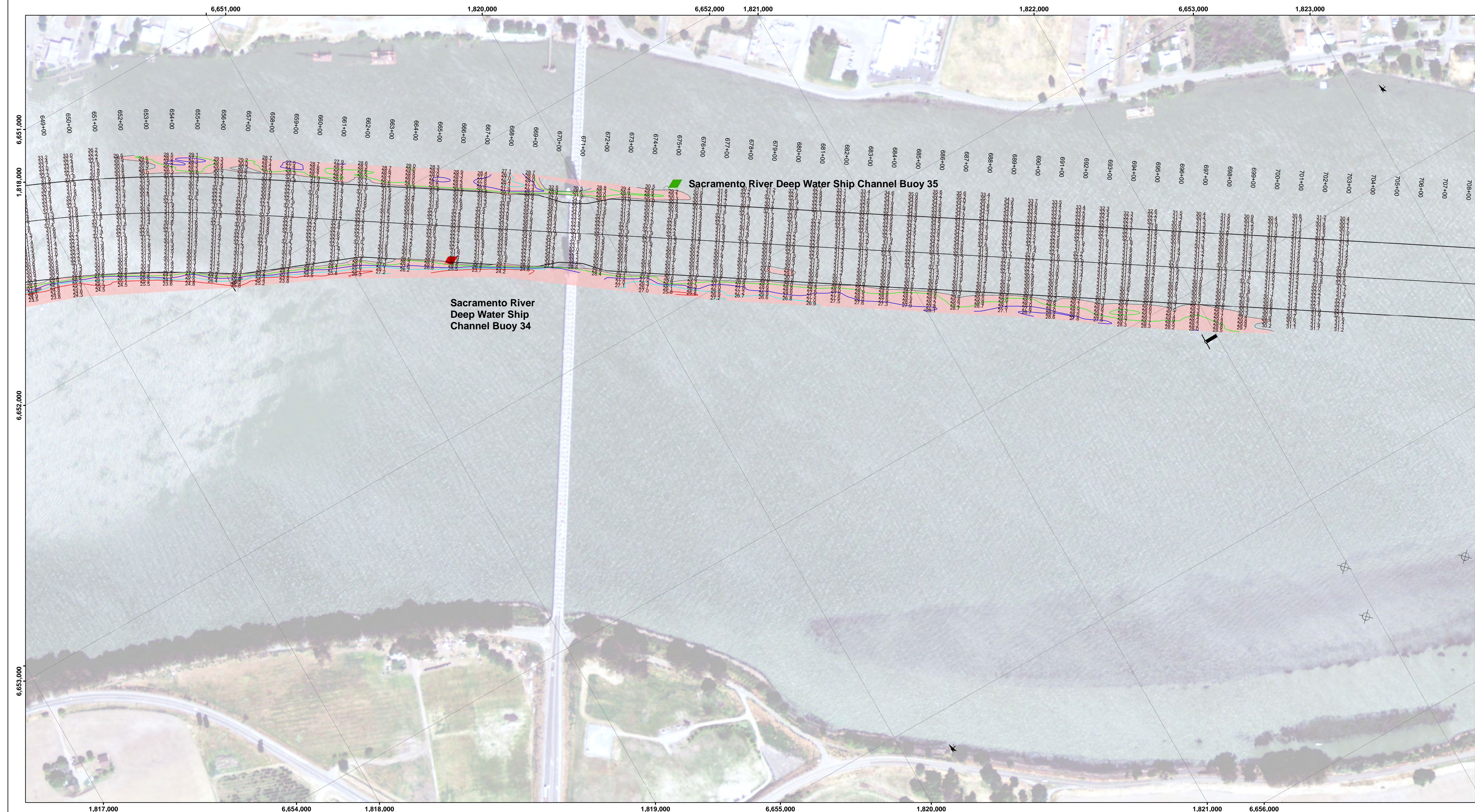


NOTES:
 DRAWING NOT TO BE USED FOR NAVIGATION. ONLY CHANNEL CONDITION AT DATE OF SURVEY.
 THE LOCATION OF ALL NAVIGATION AIDS ARE BASED ON INFORMATION PROVIDED BY THE U.S. COAST GUARD. BUOY LOCATIONS REPRESENT THE POSITION OF THE SINKER ONLY.
 SOUNDINGS WERE TAKEN BY FATHOMETER AND ARE SHOWN TO THE NEAREST TENTH OF A FOOT.
 SOUNDINGS ARE BASED ON THE DATUM OF MEAN LOWER LOW WATER AT THE LOCALITY.
 NORTH AMERICAN DATUM OF 1983 (NAD83), PROJECTED TO THE STATE PLANE COORDINATE SYSTEM (SPCS), CA ZONE II (0402), DISTANCE UNITS IN U.S. SURVEY FEET.
 PLANE GRID AND COORDINATES ARE BASED ON LAMBERT PROJECTION, NAD 83, ZONE II, CALIFORNIA AS DESCRIBED IN SPECIAL PUBLICATION NO. 235, PUBLISHED BY THE NATIONAL OCEAN SURVEY.
 PROJECT DEPTH: -30'
 VERTICAL DATUM: MLLW
 THE LOCATION OF NAVIGATION AIDS ARE BASED ON AND PROVIDED BY THE U.S. COAST GUARD

CONTROLS:
 LOCATION: RIO VISTA
 NOOA STATION: 9415316
 BENCHMARK: 5316 B 1996 (NO PID)
 TIDE GAUGE: NAIL @ 8.2 FT MLLW
 METADATA: NAIL SET BY USACE 31 MARCH, 2014

LOCATION: PORT OF WEST SACRAMENTO
 NOOA STATION: 9416131
 BENCHMARK: POWS1 (NO PID)
 TIDE GAUGE: NAIL @ 10.0 FT MLLW
 METADATA: NAIL SET BY USACE 8 APRIL, 2014

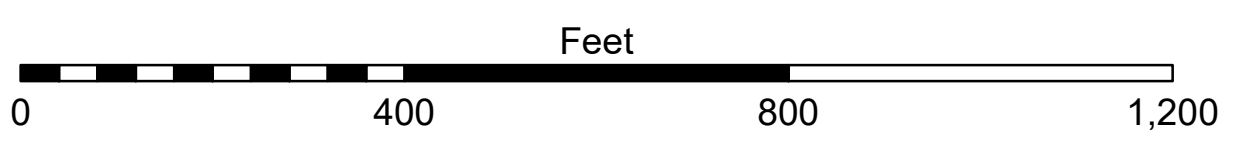
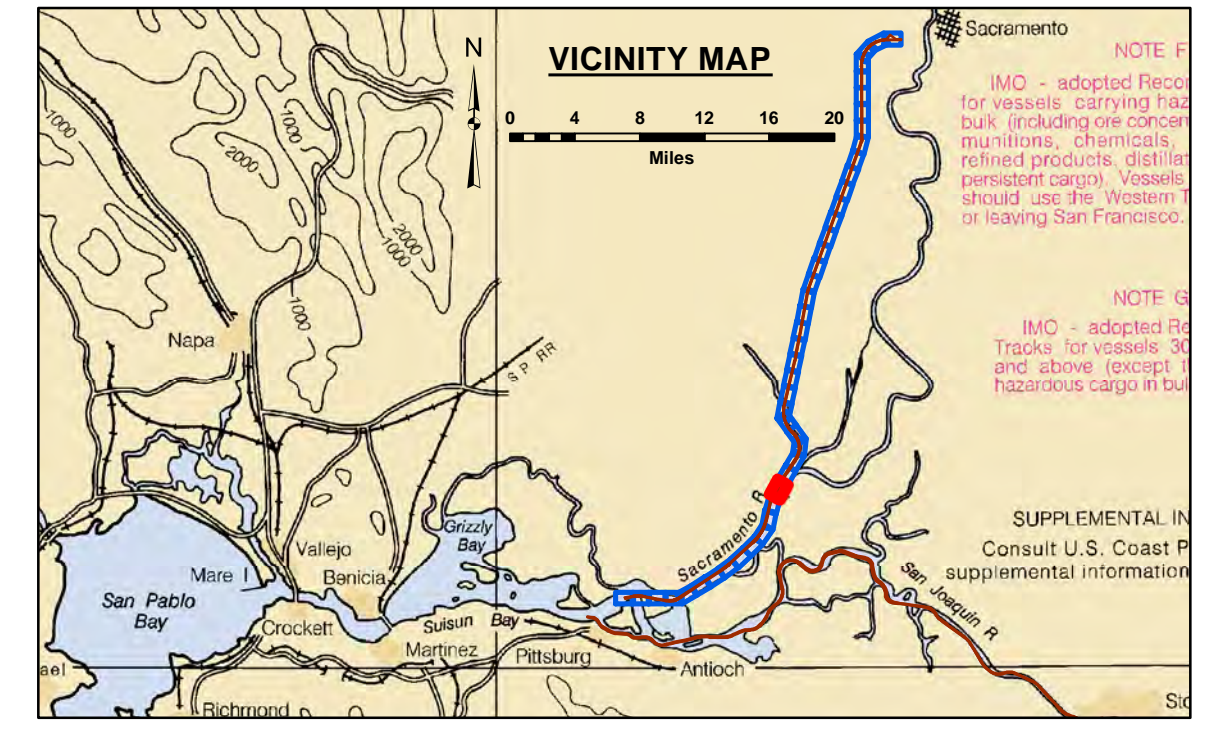
ALL HORIZONTAL POSITIONS AND MLLW ELEVATIONS WERE POST-PROCESSED USING PUBLIC GPS REFERENCE STATIONS IN THE AREA.



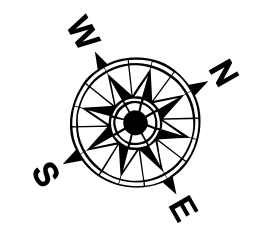
DISCLAIMER: The United States Government furnishes these data and the use of the US Coast Guard and users thereof with the express understanding that the US Coast Guard and users thereof are not responsible for the accuracy or implied consequences of the accuracy, completeness, or reliability of the information and the data furnished. The United States shall be under no liability whatsoever to any person by reason of any use of the information and the data furnished. The United States shall be responsible for the accuracy of the information and the data furnished. The United States shall be responsible for the accuracy of the information and the data furnished. The United States shall be responsible for the accuracy of the information and the data furnished.

Chart Date:	Jan 13, 2020
Designed by:	PDT
Drawn by:	PDT
Surveyed By:	PDT
Plotted By:	PDT
Checked By:	PDT
Approved:	PDT

SACRAMENTO RIVER
 POST-DREDGE SURVEY
 22, 29 AUGUST AND 11, 19 SEPTEMBER 2019



LEGEND		
--- Federal Navigation Channel	▨ Cable Area	■ Shoaling Area
— Federal Navigation Center Line	□ Placement Area	● Shoalest Sounding**
..... Cable Submarine	⊘ Anchorage Area	⊥ Beacon, General
- - - Cable Overhead	⊗ Obstruction Point	◆ Red Navigation Buoy
— Contour Line	✦ Wrecks-Submerged	◆ Green Navigation Buoy



NOTES:
 DRAWING NOT TO BE USED FOR NAVIGATION. ONLY CHANNEL CONDITION AT DATE OF SURVEY.
 THE LOCATION OF ALL NAVIGATION AIDS ARE BASED ON INFORMATION PROVIDED BY THE U.S. COAST GUARD. BUOY LOCATIONS REPRESENT THE POSITION OF THE SINKER ONLY.
 SOUNDINGS WERE TAKEN BY FATHOMETER AND ARE SHOWN TO THE NEAREST TENTH OF A FOOT.
 SOUNDINGS ARE BASED ON THE DATUM OF MEAN LOWER LOW WATER AT THE LOCALITY.
 NORTH AMERICAN DATUM OF 1983 (NAD83), PROJECTED TO THE STATE PLANE COORDINATE SYSTEM (SPCS), CA ZONE II (0402), DISTANCE UNITS IN U.S. SURVEY FEET.
 PLANE GRID AND COORDINATES ARE BASED ON LAMBERT PROJECTION, NAD 83, ZONE II, CALIFORNIA AS DESCRIBED IN SPECIAL PUBLICATION NO. 235, PUBLISHED BY THE NATIONAL OCEAN SURVEY.
 PROJECT DEPTH: -30'
 VERTICAL DATUM: MLLW
 THE LOCATION OF NAVIGATION AIDS ARE BASED ON AND PROVIDED BY THE U.S. COAST GUARD

CONTROLS:
 LOCATION: RIO VISTA
 NOAA STATION: 9415316
 BENCHMARK: 5316 B 1996 (NO PID)
 TIDE GAUGE: NAIL @ 8.2 FT MLLW
 METADATA: NAIL SET BY USACE 31 MARCH, 2014

LOCATION: PORT OF WEST SACRAMENTO
 NOAA STATION: 9416131
 BENCHMARK: POWS1 (NO PID)
 TIDE GAUGE: NAIL @ 10.0 FT MLLW
 METADATA: NAIL SET BY USACE 8 APRIL, 2014

ALL HORIZONTAL POSITIONS AND MLLW ELEVATIONS WERE POST-PROCESSED USING PUBLIC GPS REFERENCE STATIONS IN THE AREA.