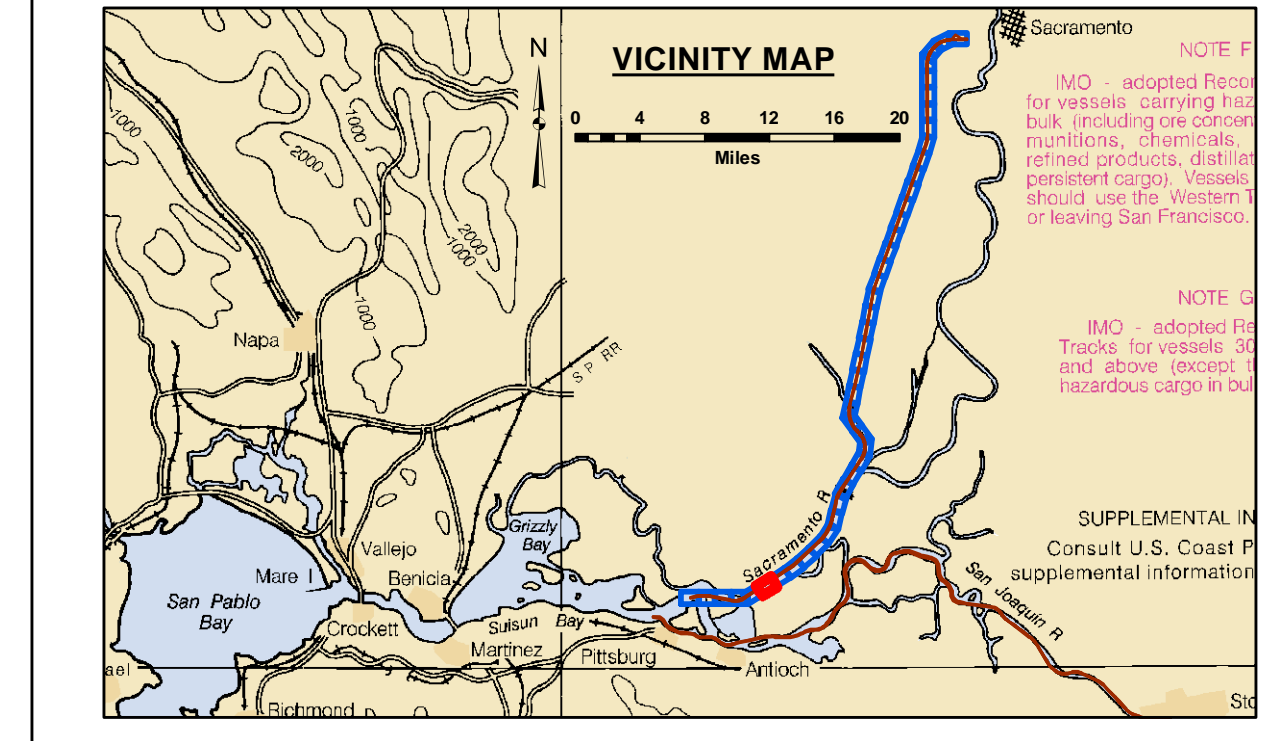


DISCLAIMER
 The United States Government furnishes the data shown on this drawing for the purpose of providing information and does not warrant the accuracy, completeness, or reliability of the data. The user is responsible for the results of any use of the data for other than its intended purpose. The user is responsible for the results of any use of the data for other than its intended purpose. The user is responsible for the results of any use of the data for other than its intended purpose.

Chart Date:	July 13, 2022
Designed by:	
Drawn by:	PDT
Checked by:	PDT
Approved:	Chief, Construction Branch
Surveyed By:	
Plotted By:	PDT
Checked By:	PDT
Approved:	Chief, Hydro Survey Section
Recommended:	Chief, Hydro Survey Section
Planned:	Hydro Survey Team Leader
Prepared Under the Direction of:	KEVIN P. ARNETT LT COLONEL, C.E., DISTRICT ENGINEER



LEGEND

--- Federal Navigation Channel	▨ Cable Area	■ Shoaling Area	— Contours
— Federal Navigation Center Line	□ Placement Area	● Shoalest Sounding within Channel Quarter**	— -30
⋯ Cable Submarine	⊠ Anchorage Area	⌫ Beacon, General	— -29
- - - Cable Overhead	⊗ Obstruction Point	◆ Red Navigation Buoy	— -28
— Contour Line	✈ Wrecks-Submerged	◆ Green Navigation Buoy	— -27
			— -26

NOTES:
 DRAWING NOT TO BE USED FOR NAVIGATION. ONLY CHANNEL CONDITION AT DATE OF SURVEY, THE LOCATION OF ALL NAVIGATION AIDS ARE BASED ON INFORMATION PROVIDED BY THE U.S. COAST GUARD. BUOY LOCATIONS REPRESENT THE POSITION OF THE SINKER ONLY.

SOUNDINGS WERE TAKEN BY FATHOMETER AND ARE SHOWN TO THE NEAREST TENTH OF A FOOT.

SOUNDINGS ARE BASED ON THE DATUM OF MEAN LOWER LOW WATER AT THE LOCALITY.

NORTH AMERICAN DATUM OF 1983 (NAD83), PROJECTED TO THE STATE PLANE COORDINATE SYSTEM (SPCS), CA ZONE II (0402). DISTANCE UNITS IN U.S. SURVEY FEET.

PLANE GRID AND COORDINATES ARE BASED ON LAMBERT PROJECTION, NAD 83, ZONE II CALIFORNIA AS DESCRIBED IN SPECIAL PUBLICATION NO. 235, PUBLISHED BY THE NATIONAL OCEAN SURVEY.

PROJECT DEPTH: -30'

VERTICAL DATUM: MLLW

THE LOCATION OF NAVIGATION AIDS ARE BASED ON AND PROVIDED BY THE U.S. COAST GUARD

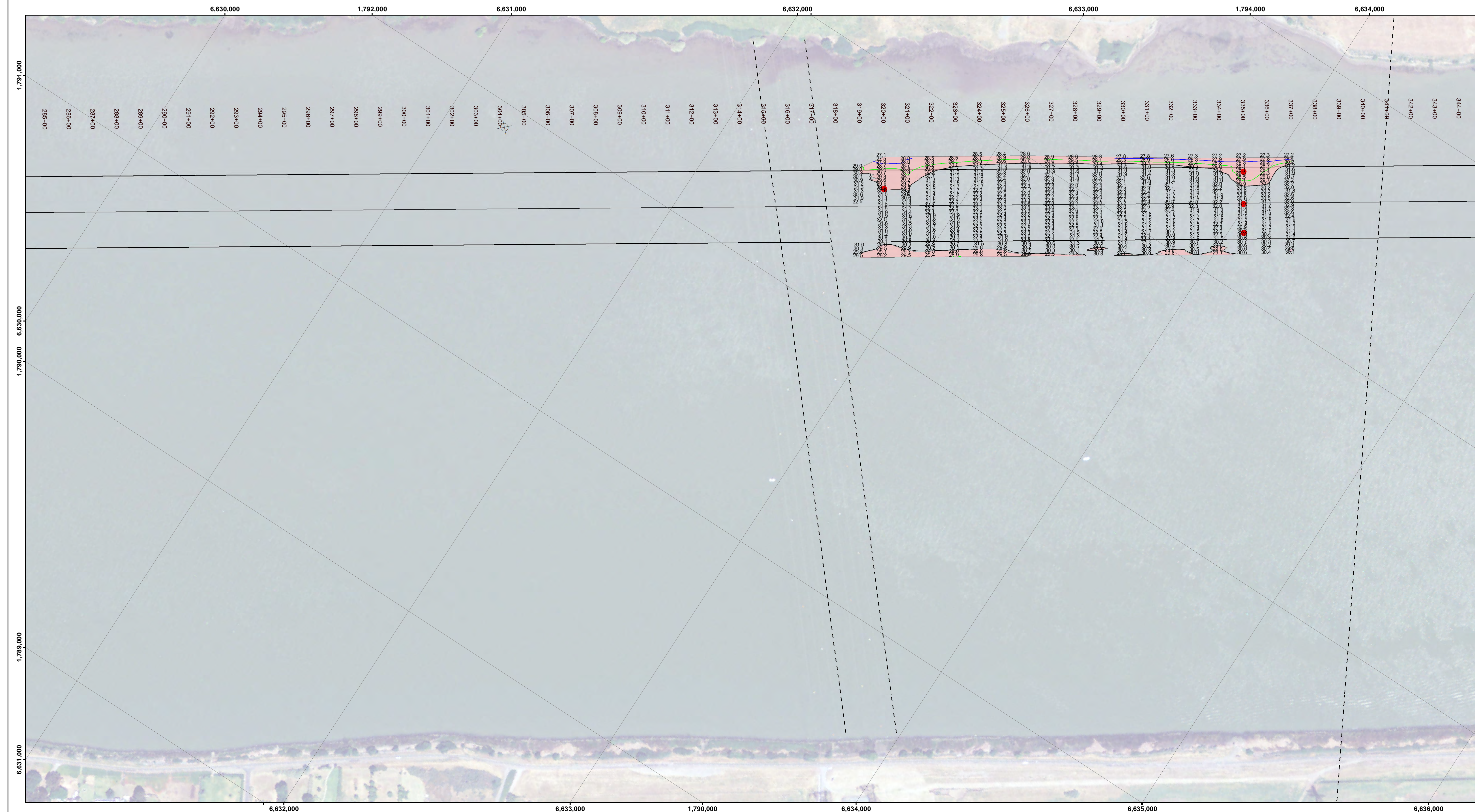
CONTROLS:
 LOCATION: RIO VISTA
 NOOA STATION: 9415316
 BENCHMARK: 5316 B 1996 (NO PID)
 TIDE GAUGE: NAIL @ 8.2 FT MLLW
 METADATA: NAIL SET BY USACE 31 MARCH, 2014

LOCATION: PORT OF WEST SACRAMENTO
 NOOA STATION: 9416131
 BENCHMARK: POWS1 (NO PID)
 TIDE GAUGE: NAIL @ 10.0 FT MLLW
 METADATA: NAIL SET BY USACE 8 APRIL, 2014

ALL HORIZONTAL POSITIONS AND MLLW ELEVATIONS WERE POST-PROCESSED USING PUBLIC GPS REFERENCE STATIONS IN THE AREA.

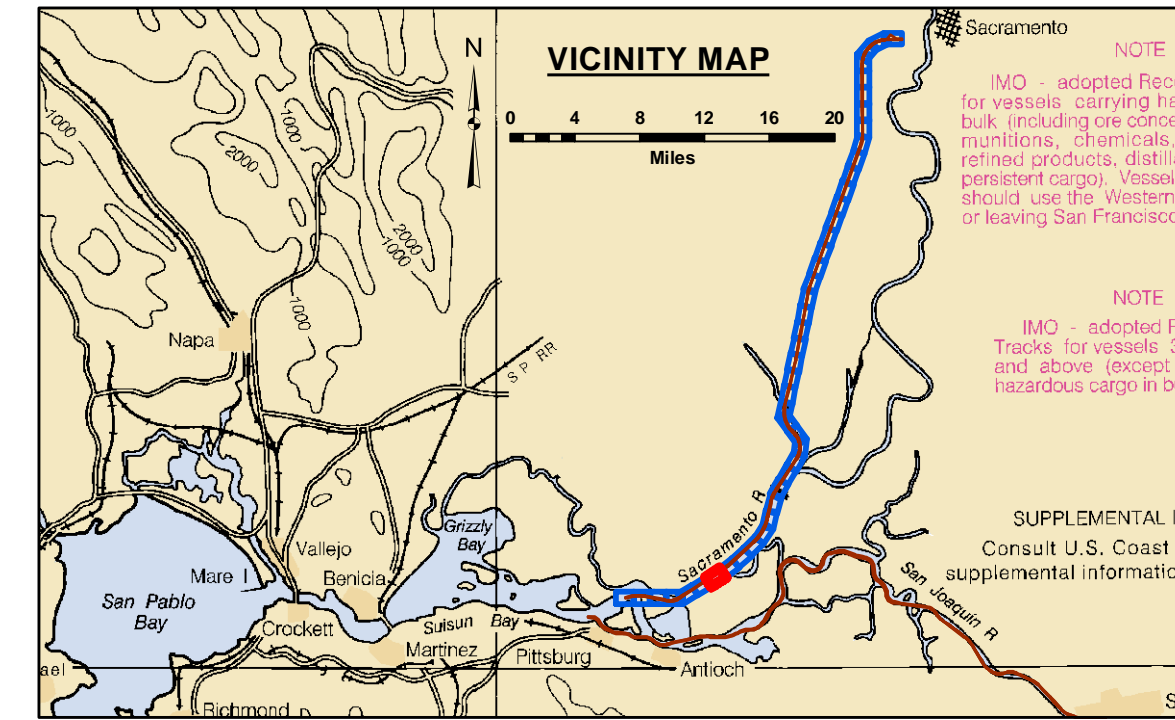
CALIFORNIA
 SACRAMENTO RIVER
 PRE-DREDGE SURVEY
 06-07 JULY 2022

Sheet Reference Number
 6 of 45

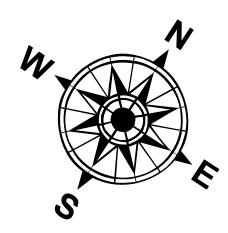


DISCLAIMER
 The United States Government furnishes this data as a service to the public and does not warrant the accuracy, completeness, or implied consequences of the data. The user is responsible for the results of any application of the data for other than its intended purpose. The user agrees to indemnify the United States Government from any and all claims, damages, losses, or expenses, including reasonable attorneys' fees, that may be incurred by the United States Government as a result of the use of the data for other than its intended purpose. The user agrees to release the United States Government from any and all claims, damages, losses, or expenses, including reasonable attorneys' fees, that may be incurred by the user as a result of the use of the data for other than its intended purpose. The user agrees to release the United States Government from any and all claims, damages, losses, or expenses, including reasonable attorneys' fees, that may be incurred by the user as a result of the use of the data for other than its intended purpose.

Chart Date:	Jul 13, 2022
Designed by:	
Drawn by:	PDT
Checked by:	PDT
Surveyed By:	
Plotted By:	PDT
Prepared Under the Direction of:	KEVIN P. ARNETT
Stationed:	Hydro Survey Team Leader
Recommended:	Chief, Hydro Survey Section
Approved:	Chief, Construction Branch



LEGEND		Shoaling Area	Contours
--- Federal Navigation Channel	▨ Cable Area	● Shoalest Sounding within Channel Quarter**	— -30
— Federal Navigation Center Line	□ Placement Area	⬇ Beacon, General	— -29
⋯ Cable Submarine	⊠ Anchorage Area	⬆ Red Navigation Buoy	— -28
- - - Cable Overhead	⊗ Obstruction Point	⬇ Green Navigation Buoy	— -27
— Contour Line	✈ Wrecks-Submerged		— -26



NOTES:
 DRAWING NOT TO BE USED FOR NAVIGATION. ONLY CHANNEL CONDITION AT DATE OF SURVEY, THE LOCATION OF ALL NAVIGATION AIDS ARE BASED ON INFORMATION PROVIDED BY THE U.S. COAST GUARD. BUOY LOCATIONS REPRESENT THE POSITION OF THE SINKER ONLY.

SOUNDINGS WERE TAKEN BY FATHOMETER AND ARE SHOWN TO THE NEAREST TENTH OF A FOOT.

SOUNDINGS ARE BASED ON THE DATUM OF MEAN LOWER LOW WATER AT THE LOCALITY.

NORTH AMERICAN DATUM OF 1983 (NAD83), PROJECTED TO THE STATE PLANE COORDINATE SYSTEM (SPCS), CA ZONE II (0402). DISTANCE UNITS IN U.S. SURVEY FEET.

PLANE GRID AND COORDINATES ARE BASED ON LAMBERT PROJECTION, NAD 83, ZONE II CALIFORNIA AS DESCRIBED IN SPECIAL PUBLICATION NO. 235, PUBLISHED BY THE NATIONAL OCEAN SURVEY.

PROJECT DEPTH: -30'

VERTICAL DATUM: MLLW

THE LOCATION OF NAVIGATION AIDS ARE BASED ON AND PROVIDED BY THE U.S. COAST GUARD

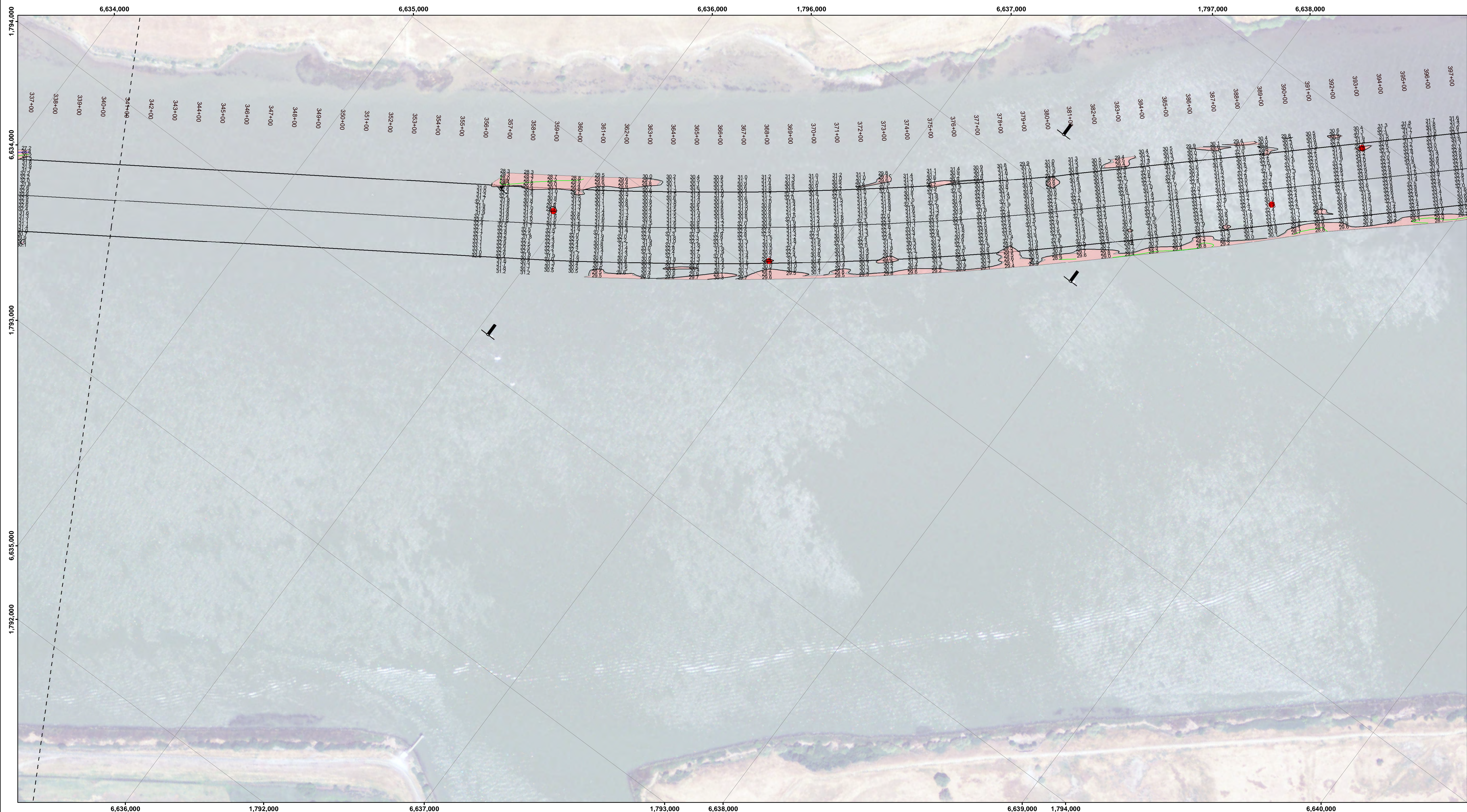
CONTROLS:
 LOCATION: RIO VISTA
 NOOA STATION: 9415316
 BENCHMARK: 5316 B 1996 (NO PID)
 TIDE GAUGE: NAIL @ 8.2 FT MLLW
 METADATA: NAIL SET BY USACE 31 MARCH, 2014

LOCATION: PORT OF WEST SACRAMENTO
 NOOA STATION: 9416131
 BENCHMARK: POWS1 (NO PID)
 TIDE GAUGE: NAIL @ 10.0 FT MLLW
 METADATA: NAIL SET BY USACE 8 APRIL, 2014

ALL HORIZONTAL POSITIONS AND MLLW ELEVATIONS WERE POST-PROCESSED USING PUBLIC GPS REFERENCE STATIONS IN THE AREA.

CALIFORNIA
 SAN JOAQUIN COUNTY
SACRAMENTO RIVER
 PRE-DREDGE SURVEY
 06-07 JULY 2022

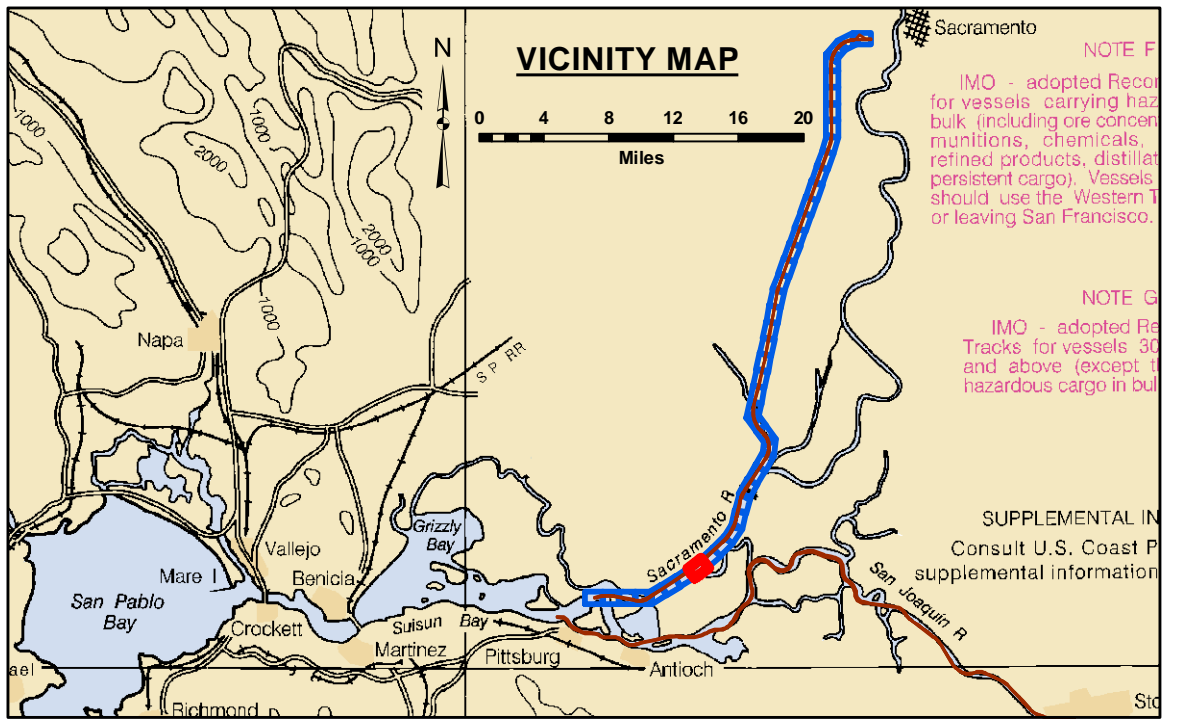
Sheet Reference Number
7 of 45



DISCLAIMER: The United States Government furnishes this information as it is received from the express user and does not warrant the accuracy, completeness, or implied concerning the accuracy, completeness, information and the data furnished. The United States shall be under no liability whatsoever to any person by reason of any use of these data, and the recipient agrees not to represent these data to anyone as other than Government provided data. The recipient may not transfer these data to others without also transferring this Disclaimer.

Chart Date:	July 13, 2022
Designed by:	PDT
Drawn by:	PDT
Surveyed By:	KEVIN P. ARNETT
Plotted By:	PDT
Checked By:	PDT
Prepared Under the Direction of:	LT COLONEL C.E. DISTRICT ENGINEER
Stipulated:	Hydro Survey Team Leader
Recommended:	Chief, Hydro Survey Section
Approved:	Chief, Construction Branch

CALIFORNIA
 SAN JOAQUIN COUNTY
SACRAMENTO RIVER
 PRE-DREDGE SURVEY
 06-07 JULY 2022



0 400 800 1,200 Feet

--- Federal Navigation Channel	▨ Cable Area	■ Shoaling Area	— Contours
— Federal Navigation Center Line	□ Placement Area	● Shoalest Sounding within Channel Quarter**	— -30
..... Cable Submarine	▭ Anchorage Area	⊥ Beacon, General	— -29
- - - Cable Overhead	⊗ Obstruction Point	◆ Red Navigation Buoy	— -28
— Contour Line	✈ Wrecks-Submerged	◆ Green Navigation Buoy	— -27
			— -26

NOTES:
 DRAWING NOT TO BE USED FOR NAVIGATION. ONLY CHANNEL CONDITION AT DATE OF SURVEY, THE LOCATION OF ALL NAVIGATION AIDS ARE BASED ON INFORMATION PROVIDED BY THE U.S. COAST GUARD. BUOY LOCATIONS REPRESENT THE POSITION OF THE SINKER ONLY.

SOUNDINGS WERE TAKEN BY FATHOMETER AND ARE SHOWN TO THE NEAREST TENTH OF A FOOT.

SOUNDINGS ARE BASED ON THE DATUM OF MEAN LOWER LOW WATER AT THE LOCALITY.

NORTH AMERICAN DATUM OF 1983 (NAD83), PROJECTED TO THE STATE PLANE COORDINATE SYSTEM (SPCS), CA ZONE II (0402). DISTANCE UNITS IN U.S. SURVEY FEET.

PLANE GRID AND COORDINATES ARE BASED ON LAMBERT PROJECTION, NAD 83, ZONE II CALIFORNIA AS DESCRIBED IN SPECIAL PUBLICATION NO. 235, PUBLISHED BY THE NATIONAL OCEAN SURVEY.

PROJECT DEPTH: -30'

VERTICAL DATUM: MLLW

THE LOCATION OF NAVIGATION AIDS ARE BASED ON AND PROVIDED BY THE U.S. COAST GUARD

CONTROLS:
 LOCATION: RIO VISTA
 NOOA STATION: 9415316
 BENCHMARK: 5316 B 1996 (NO PID)
 TIDE GAUGE: NAIL @ 8.2 FT MLLW
 METADATA: NAIL SET BY USACE 31 MARCH, 2014

LOCATION: PORT OF WEST SACRAMENTO
 NOOA STATION: 9416151
 BENCHMARK: POWS1 (NO PID)
 TIDE GAUGE: NAIL @ 10.0 FT MLLW
 METADATA: NAIL SET BY USACE 8 APRIL, 2014

ALL HORIZONTAL POSITIONS AND MLLW ELEVATIONS WERE POST-PROCESSED USING PUBLIC GPS REFERENCE STATIONS IN THE AREA.

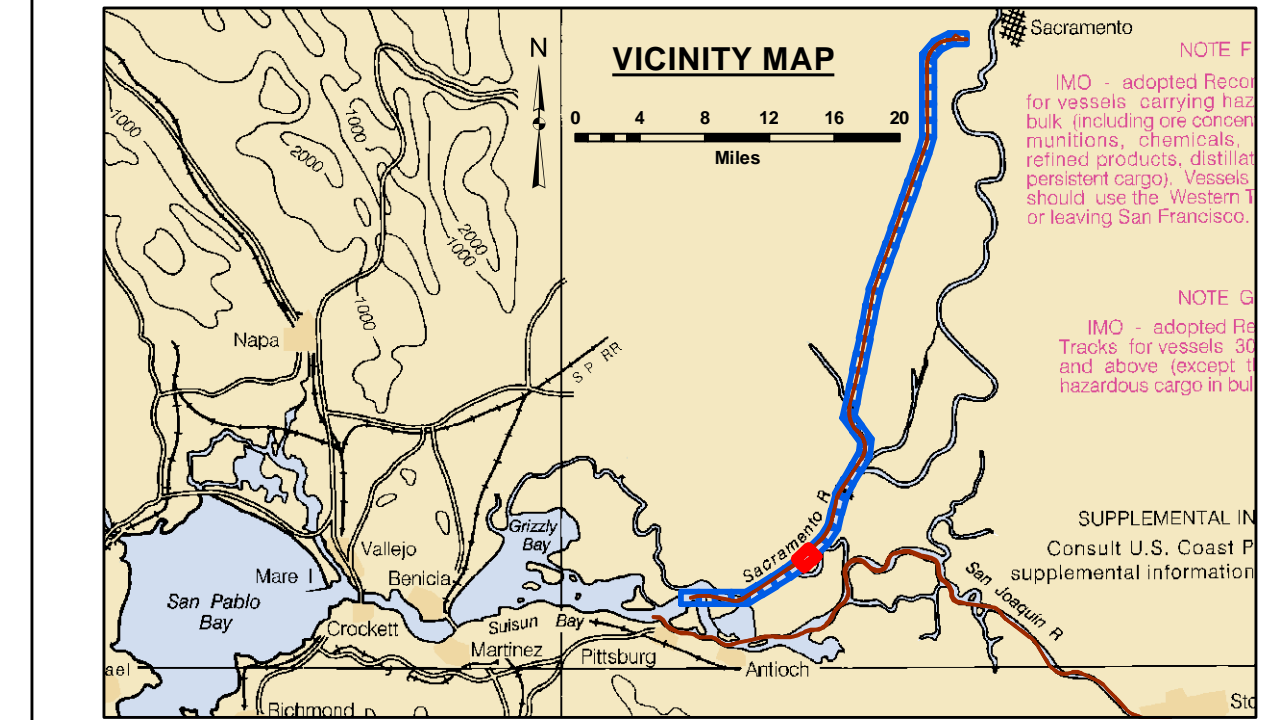


DISCLAIMER
 The United States Government furnishes this information as it is received from the person or persons who furnished it. It is not to be used for any purpose other than that for which it was prepared. The United States Government is not responsible for the results of any use of this information for any purpose other than that for which it was prepared. The United States Government is not responsible for the results of any use of this information for any purpose other than that for which it was prepared. The United States Government is not responsible for the results of any use of this information for any purpose other than that for which it was prepared.

Chart Date:	July 13, 2022
Designed by:	
Drawn by:	PDT
Surveyed By:	
Plotted By:	PDT
Checked By:	PDT
Approved:	
Chief, Construction Branch	

CALIFORNIA
 SAN JOAQUIN COUNTY
SACRAMENTO RIVER
 PRE-DREDGE SURVEY
 06-07 JULY 2022

Sheet Reference Number
9 of 45



0 400 800 1,200 Feet

LEGEND

--- Federal Navigation Channel	▨ Cable Area	■ Shoaling Area	— Contours
— Federal Navigation Center Line	□ Placement Area	● Shoalest Sounding within Channel Quarter**	— -30
..... Cable Submarine	▭ Anchorage Area	⊥ Beacon, General	— -29
- - - Cable Overhead	⊗ Obstruction Point	◆ Red Navigation Buoy	— -28
— Contour Line	✈ Wrecks-Submerged	◆ Green Navigation Buoy	— -27
			— -26

NOTES:
 DRAWING NOT TO BE USED FOR NAVIGATION. ONLY CHANNEL CONDITION AT DATE OF SURVEY, THE LOCATION OF ALL NAVIGATION AIDS ARE BASED ON INFORMATION PROVIDED BY THE U.S. COAST GUARD. BUOY LOCATIONS REPRESENT THE POSITION OF THE SINKER ONLY.

SOUNDINGS WERE TAKEN BY FATHOMETER AND ARE SHOWN TO THE NEAREST TENTH OF A FOOT.

SOUNDINGS ARE BASED ON THE DATUM OF MEAN LOWER LOW WATER AT THE LOCALITY.

NORTH AMERICAN DATUM OF 1983 (NAD83), PROJECTED TO THE STATE PLANE COORDINATE SYSTEM (SPCS), CA ZONE II (0402). DISTANCE UNITS IN U.S. SURVEY FEET.

PLANE GRID AND COORDINATES ARE BASED ON LAMBERT PROJECTION, NAD 83, ZONE II CALIFORNIA AS DESCRIBED IN SPECIAL PUBLICATION NO. 235, PUBLISHED BY THE NATIONAL OCEAN SURVEY.

PROJECT DEPTH: -30'

VERTICAL DATUM: MLLW

THE LOCATION OF NAVIGATION AIDS ARE BASED ON AND PROVIDED BY THE U.S. COAST GUARD

CONTROLS:
 LOCATION: RIO VISTA
 NOAA STATION: 9415316
 BENCHMARK: 5316 B 1996 (NO PID)
 TIDE GAUGE: NAIL @ 8.2 FT MLLW
 METADATA: NAIL SET BY USACE 31 MARCH, 2014

LOCATION: PORT OF WEST SACRAMENTO
 NOAA STATION: 9416151
 BENCHMARK: POWS1 (NO PID)
 TIDE GAUGE: NAIL @ 10.0 FT MLLW
 METADATA: NAIL SET BY USACE 8 APRIL, 2014

ALL HORIZONTAL POSITIONS AND MLLW ELEVATIONS WERE POST-PROCESSED USING PUBLIC GPS REFERENCE STATIONS IN THE AREA.

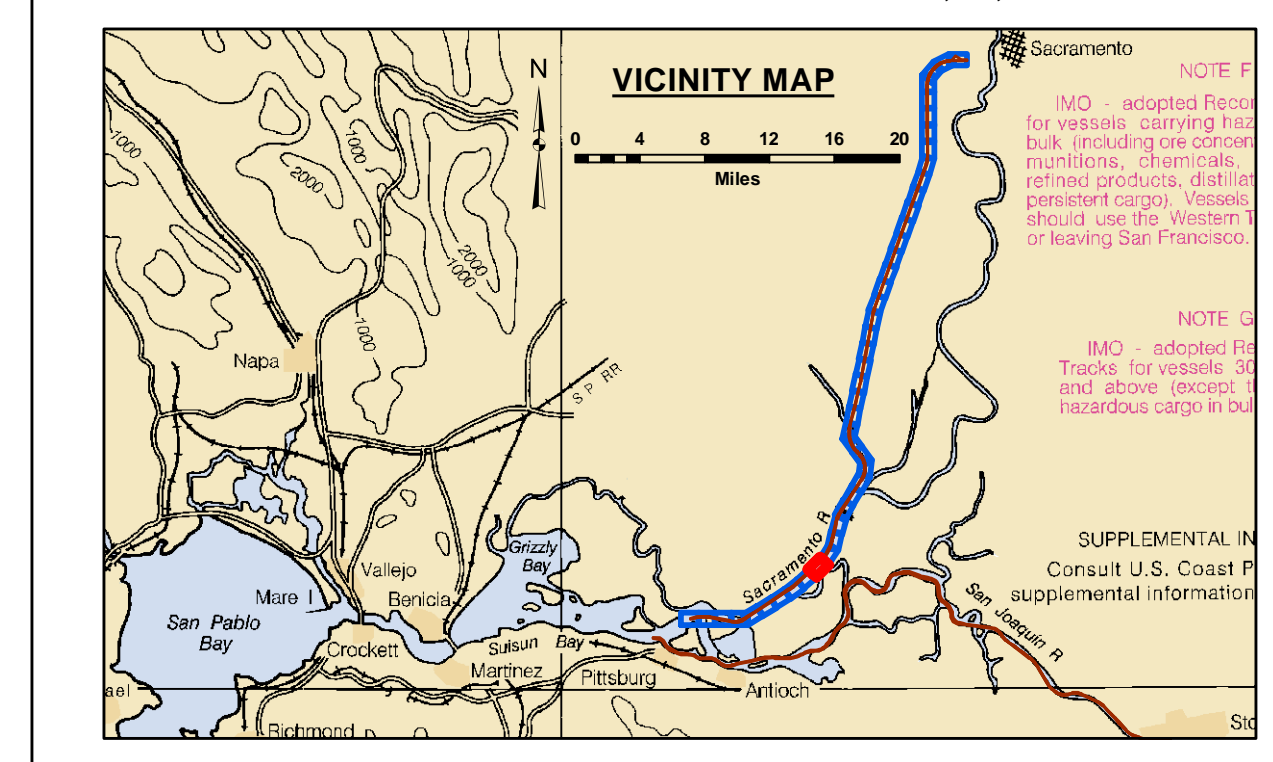


DISCLAIMER: The United States Government furnishes this data as a service to the public and does not warrant the accuracy, completeness, or reliability of the information and the data furnished. The United States shall be under no liability whatsoever to any person by reason of any use of the information and the data furnished. The recipient may not transfer these data to others without also transferring this Disclaimer.

ACCESS CONSTRAINTS: The United States Government furnishes this data as a service to the public and does not warrant the accuracy, completeness, or reliability of the information and the data furnished. The United States shall be under no liability whatsoever to any person by reason of any use of the information and the data furnished. The recipient may not transfer these data to others without also transferring this Disclaimer.

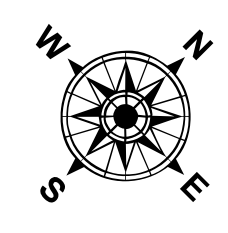
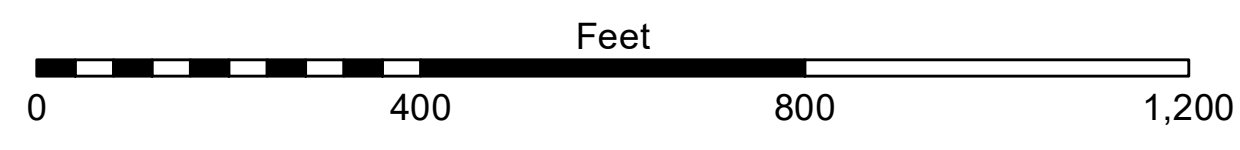
DISTRIBUTION STATEMENT: This data represents the results of data collection processing for a specific US Army Corps of Engineers project. It is not to be used for any other purpose without the express approval of the US Army Corps of Engineers. The user is responsible for the results of any of the application of the data for other than its intended purpose.

Chart Date:	July 13, 2022
Prepared Under the Direction of:	KEVIN P. ARNETT
Surveilled By:	LT COLONEL C.E. DISTRICT ENGINEER
Plotted By:	PDT
Checked By:	PDT
Drawn By:	PDT



LEGEND

--- Federal Navigation Channel	▨ Cable Area	■ Shoaling Area	— Contours
— Federal Navigation Center Line	□ Placement Area	● Shoalest Sounding within Channel Quarter**	— -30
..... Cable Submarine	▭ Anchorage Area	⬇ Beacon, General	— -29
- - - Cable Overhead	⊗ Obstruction Point	♦ Red Navigation Buoy	— -28
— Contour Line	✈ Wrecks-Submerged	♦ Green Navigation Buoy	— -27
			— -26



NOTES: DRAWING NOT TO BE USED FOR NAVIGATION. ONLY CHANNEL CONDITION AT DATE OF SURVEY, THE LOCATION OF ALL NAVIGATION AIDS ARE BASED ON INFORMATION PROVIDED BY THE U.S. COAST GUARD. BUOY LOCATIONS REPRESENT THE POSITION OF THE SINKER ONLY.

SOUNDINGS WERE TAKEN BY FATHOMETER AND ARE SHOWN TO THE NEAREST TENTH OF A FOOT.

SOUNDINGS ARE BASED ON THE DATUM OF MEAN LOWER LOW WATER AT THE LOCALITY.

NORTH AMERICAN DATUM OF 1983 (NAD83), PROJECTED TO THE STATE PLANE COORDINATE SYSTEM (SPCS), CA ZONE II (0402). DISTANCE UNITS IN U.S. SURVEY FEET.

PLANE GRID AND COORDINATES ARE BASED ON LAMBERT PROJECTION, NAD 83, ZONE II CALIFORNIA AS DESCRIBED IN SPECIAL PUBLICATION NO. 235, PUBLISHED BY THE NATIONAL OCEAN SURVEY.

PROJECT DEPTH: -30'

VERTICAL DATUM: MLLW

THE LOCATION OF NAVIGATION AIDS ARE BASED ON AND PROVIDED BY THE U.S. COAST GUARD

CONTROLS: LOCATION: RIO VISTA
NOAA STATION: 9415316
BENCHMARK: 5316 B 1996 (NO PID)
TIDE GAUGE: NAIL @ 8.2 FT MLLW
METADATA: NAIL SET BY USACE 31 MARCH, 2014

LOCATION: PORT OF WEST SACRAMENTO
NOAA STATION: 9416131
BENCHMARK: POWS1 (NO PID)
TIDE GAUGE: NAIL @ 10.0 FT MLLW
METADATA: NAIL SET BY USACE 8 APRIL, 2014

ALL HORIZONTAL POSITIONS AND MLLW ELEVATIONS WERE POST-PROCESSED USING PUBLIC GPS REFERENCE STATIONS IN THE AREA.

CALIFORNIA

SAN JOAQUIN COUNTY

SACRAMENTO RIVER

PRE-DREDGE SURVEY

06-07 JULY 2022

Sheet Reference Number

10 of 45

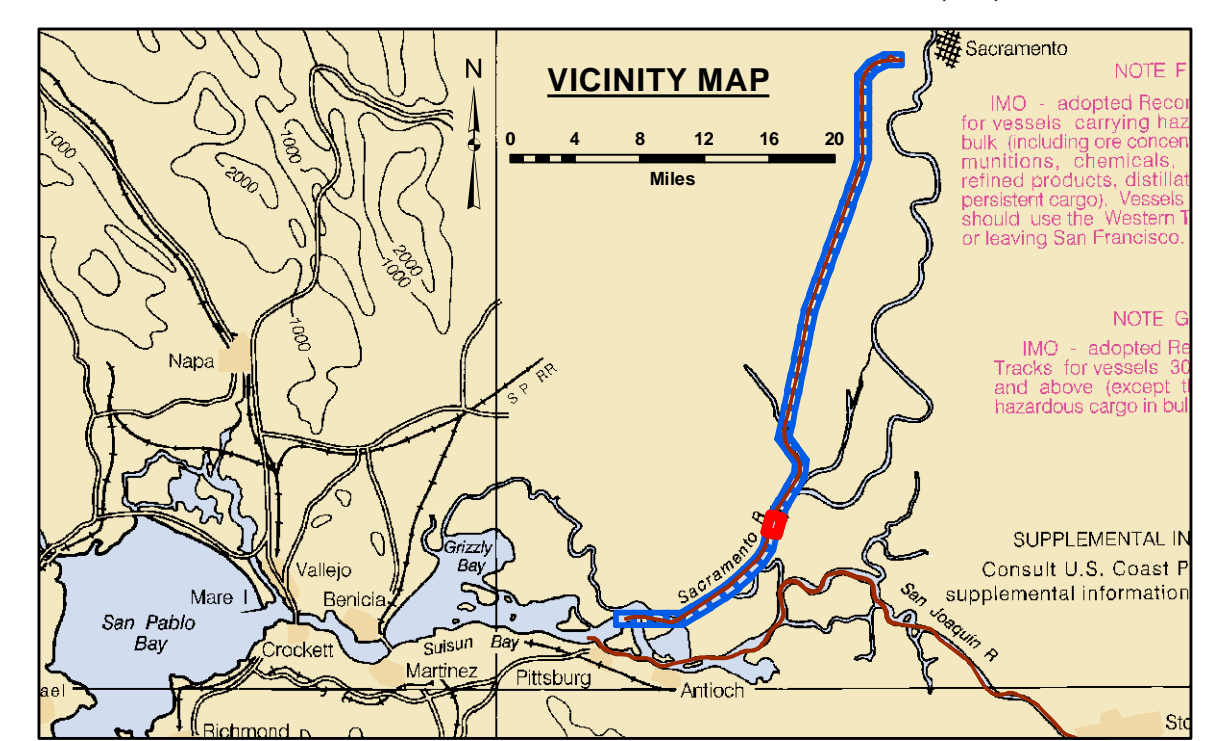


DISCLAIMER
 The United States Government furnishes this information as it is received from the sources indicated. It is not to be construed as an endorsement, expressed or implied, concerning the accuracy, completeness, or reliability of the information and the data furnished. The United States shall be under no liability whatsoever to any person by reason of any use of the information and the data furnished. The recipient may not transfer these data to others without also transferring this Disclaimer.

Prepared Under the Direction of KEVIN P. ARNETT LT Colonel, C.E. District Engineer	Chart Date: Jul 13, 2022
Surveyed By: PDT	Designed by: PDT
Plotted By: PDT	Drawn by: PDT
Checked By: PDT	
Approved: Chief, Construction Branch	

CALIFORNIA
 SAN JOAQUIN COUNTY
SACRAMENTO RIVER
 PRE-DREDGE SURVEY
 06-07 JULY 2022

Sheet
 Reference
 Number
13 of 45



0 400 800 1,200 Feet

--- Federal Navigation Channel	Cable Area	Shoaling Area	-30
— Federal Navigation Center Line	Placement Area	Shoalest Sounding within Channel Quarter**	-29
..... Cable Submarine	Anchorage Area	Beacon, General	-28
- - - Cable Overhead	Obstruction Point	Red Navigation Buoy	-27
— Contour Line	Wrecks-Submerged	Green Navigation Buoy	-26

NOTES:
 DRAWING NOT TO BE USED FOR NAVIGATION. ONLY CHANNEL CONDITION AT DATE OF SURVEY, THE LOCATION OF ALL NAVIGATION AIDS ARE BASED ON INFORMATION PROVIDED BY THE U.S. COAST GUARD. BUOY LOCATIONS REPRESENT THE POSITION OF THE SINKER ONLY.

SOUNDINGS WERE TAKEN BY FATHOMETER AND ARE SHOWN TO THE NEAREST TENTH OF A FOOT.

SOUNDINGS ARE BASED ON THE DATUM OF MEAN LOWER LOW WATER AT THE LOCALITY.

NORTH AMERICAN DATUM OF 1983 (NAD83), PROJECTED TO THE STATE PLANE COORDINATE SYSTEM (SPCS), CA ZONE II (0402). DISTANCE UNITS IN U.S. SURVEY FEET.

PLANE GRID AND COORDINATES ARE BASED ON LAMBERT PROJECTION, NAD 83, ZONE II CALIFORNIA AS DESCRIBED IN SPECIAL PUBLICATION NO. 235, PUBLISHED BY THE NATIONAL OCEAN SURVEY.

PROJECT DEPTH: -30'

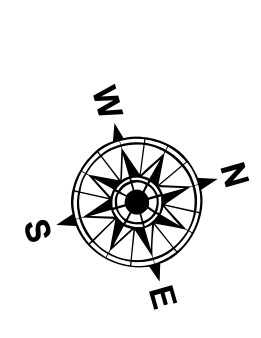
VERTICAL DATUM: MLLW

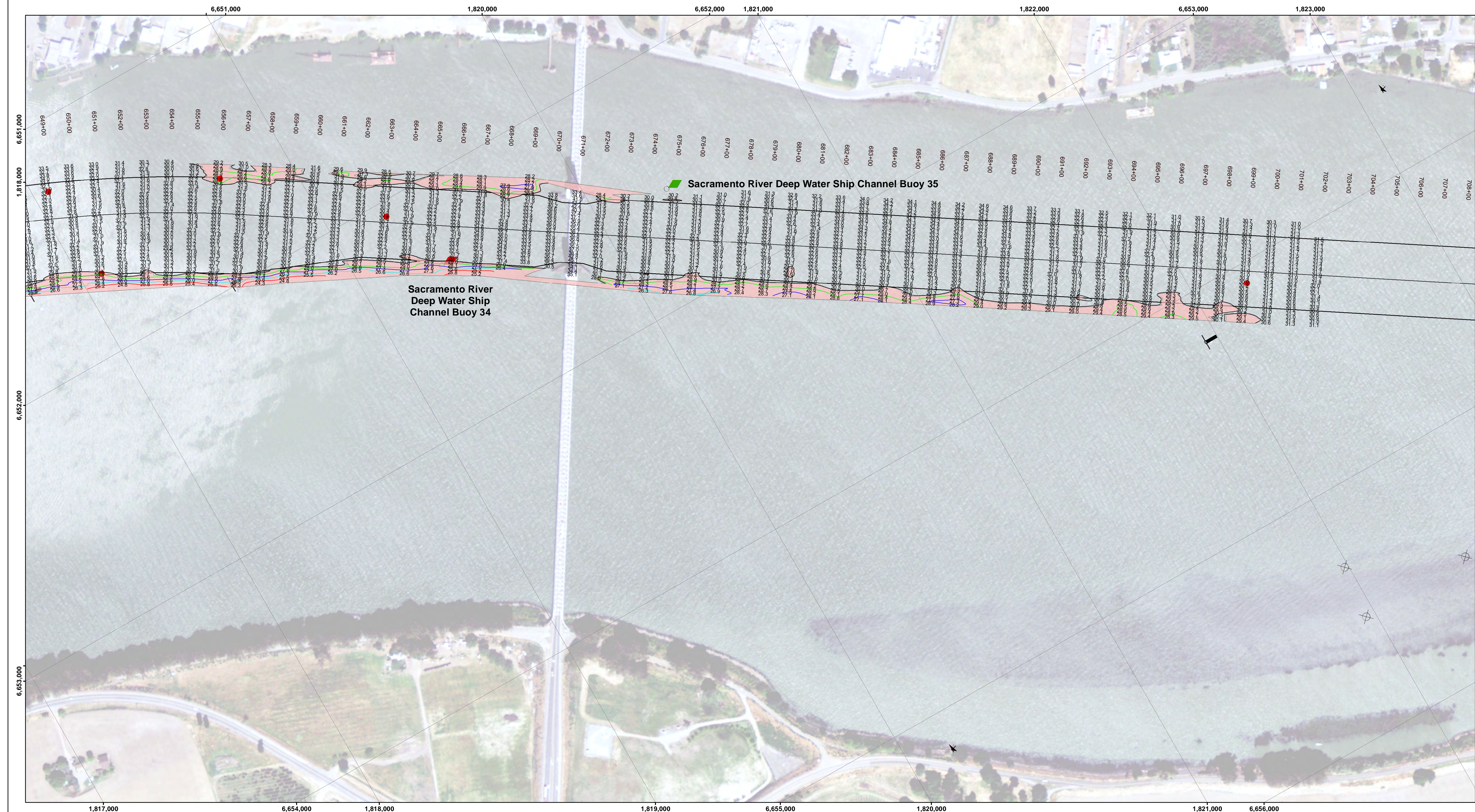
THE LOCATION OF NAVIGATION AIDS ARE BASED ON AND PROVIDED BY THE U.S. COAST GUARD

CONTROLS:
 LOCATION: RIO VISTA
 NOOA STATION: 9415316
 BENCHMARK: 5316 B 1996 (NO PID)
 TIDE GAUGE: NAIL @ 8.2 FT MLLW
 METADATA: NAIL SET BY USACE 31 MARCH, 2014

LOCATION: PORT OF WEST SACRAMENTO
 NOOA STATION: 9416151
 BENCHMARK: POWS1 (NO PID)
 TIDE GAUGE: NAIL @ 10.0 FT MLLW
 METADATA: NAIL SET BY USACE 8 APRIL, 2014

ALL HORIZONTAL POSITIONS AND MLLW ELEVATIONS WERE POST-PROCESSED USING PUBLIC GPS REFERENCE STATIONS IN THE AREA.



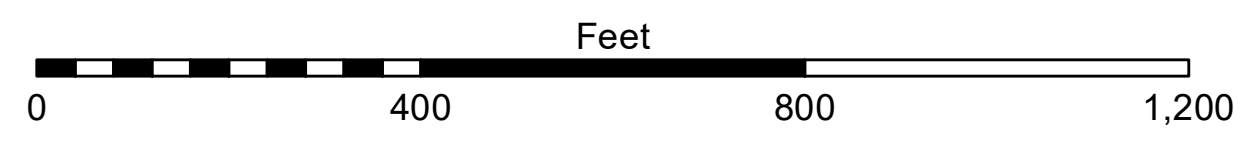
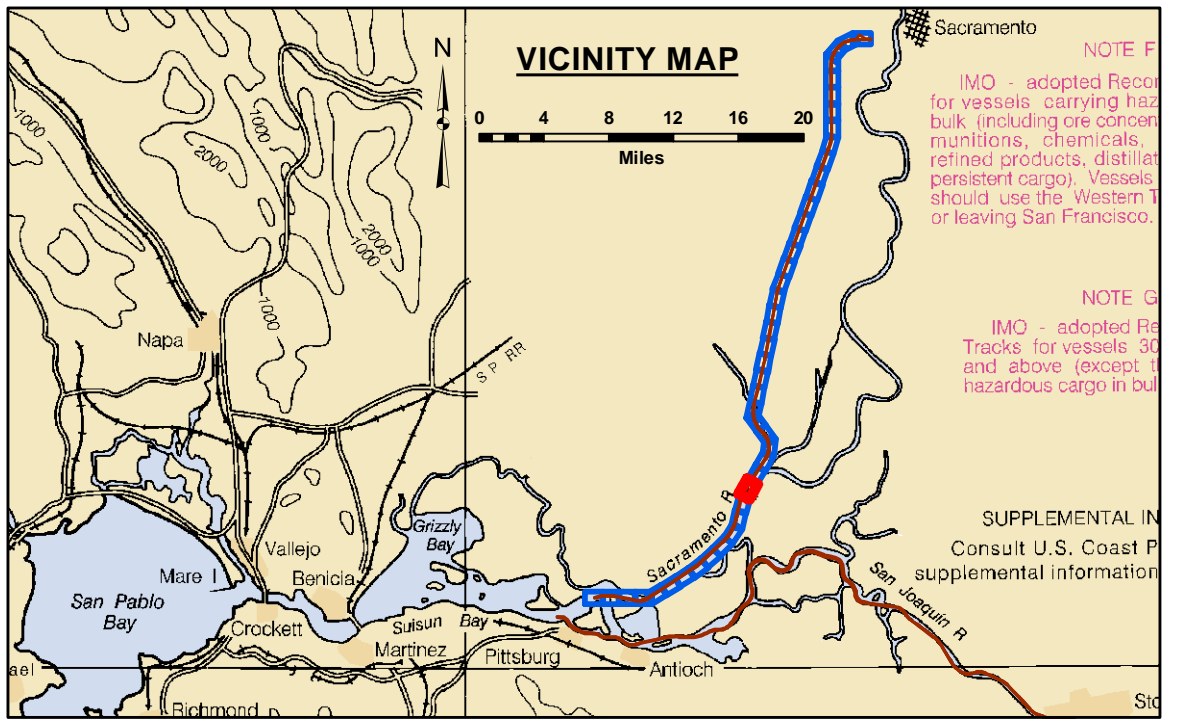


DISCLAIMER: The United States Government furnishes this data as a service to the public and does not warrant the accuracy, completeness, or reliability of the information and the data furnished. The United States shall be under no liability whatsoever to any person by reason of any use of the information and the data furnished. The recipient may not transfer these data to others without obtaining the permission of the United States Government.

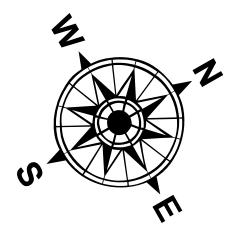
Access Constraints: The United States Government furnishes this data as a service to the public and does not warrant the accuracy, completeness, or reliability of the information and the data furnished. The United States shall be under no liability whatsoever to any person by reason of any use of the information and the data furnished. The recipient may not transfer these data to others without obtaining the permission of the United States Government.

Chart Date:	July 13, 2022
Designed by:	PDT
Drawn by:	PDT
Surveyed By:	PDT
Plotted By:	PDT
Checked By:	PDT
Approved:	PDT
Chief, Construction Branch	

CALIFORNIA
 SAN JOAQUIN COUNTY
SACRAMENTO RIVER
 PRE-DREDGE SURVEY
 06-07 JULY 2022



LEGEND		Shoaling Area	Contours
--- Federal Navigation Channel	▨ Cable Area	Shoaling Area	— -30
— Federal Navigation Center Line	□ Placement Area	● Shoalest Sounding within Channel Quarter**	— -29
..... Cable Submarine	▨ Anchorage Area	⬇ Beacon, General	— -28
- - - Cable Overhead	⊗ Obstruction Point	♦ Red Navigation Buoy	— -27
— Contour Line	✈ Wrecks-Submerged	♦ Green Navigation Buoy	— -26



NOTES:
 DRAWING NOT TO BE USED FOR NAVIGATION. ONLY CHANNEL CONDITION AT DATE OF SURVEY, THE LOCATION OF ALL NAVIGATION AIDS ARE BASED ON INFORMATION PROVIDED BY THE U.S. COAST GUARD. BUOY LOCATIONS REPRESENT THE POSITION OF THE SINKER ONLY.

SOUNDINGS WERE TAKEN BY FATHOMETER AND ARE SHOWN TO THE NEAREST TENTH OF A FOOT.

SOUNDINGS ARE BASED ON THE DATUM OF MEAN LOWER LOW WATER AT THE LOCALITY.

NORTH AMERICAN DATUM OF 1983 (NAD83), PROJECTED TO THE STATE PLANE COORDINATE SYSTEM (SPCS), CA ZONE II (0402). DISTANCE UNITS IN U.S. SURVEY FEET.

PLANE GRID AND COORDINATES ARE BASED ON LAMBERT PROJECTION, NAD 83, ZONE II CALIFORNIA AS DESCRIBED IN SPECIAL PUBLICATION NO. 235, PUBLISHED BY THE NATIONAL OCEAN SURVEY.

PROJECT DEPTH: -30'

VERTICAL DATUM: MLLW

THE LOCATION OF NAVIGATION AIDS ARE BASED ON AND PROVIDED BY THE U.S. COAST GUARD

CONTROLS:
 LOCATION: RIO VISTA
 NOAA STATION: 9415316
 BENCHMARK: 5316 B 1996 (NO PID)
 TIDE GAUGE: NAIL @ 8.2 FT MLLW
 METADATA: NAIL SET BY USACE 31 MARCH, 2014

LOCATION: PORT OF WEST SACRAMENTO
 NOAA STATION: 9415151
 BENCHMARK: POWS1 (NO PID)
 TIDE GAUGE: NAIL @ 10.0 FT MLLW
 METADATA: NAIL SET BY USACE 8 APRIL, 2014

ALL HORIZONTAL POSITIONS AND MLLW ELEVATIONS WERE POST-PROCESSED USING PUBLIC GPS REFERENCE STATIONS IN THE AREA.

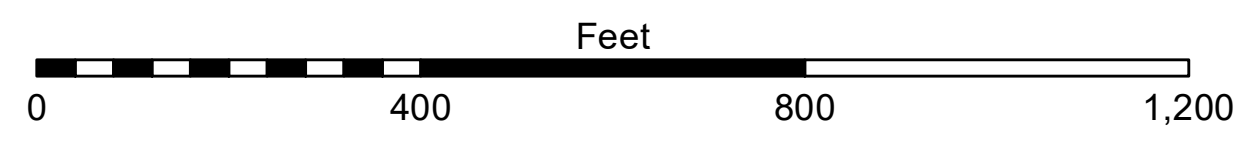
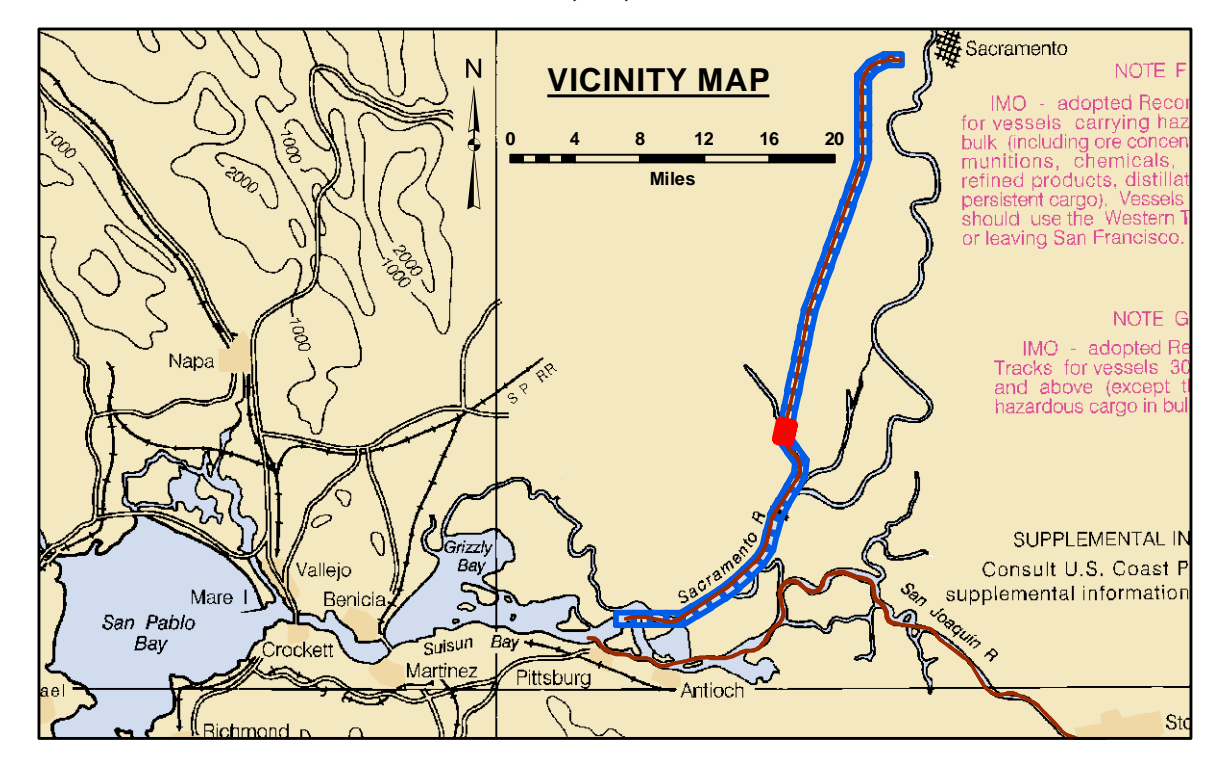


DISCLAIMER
 The United States Government furnishes this information as a service to the public and does not warrant the accuracy, completeness, or reliability of the information. The user is responsible for the results of any use of the information. The United States Government assumes no liability for any error or omission in this information and the data furnished. The United States Government is not responsible for any use of the information for purposes other than those intended. The recipient may not transfer this data to others without transferring this Disclaimer.

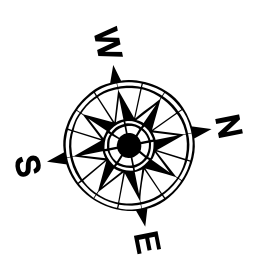
Chart Date:	Jul 13, 2022
Designed by:	PDT
Drawn by:	PDT
Surveyed By:	PDT
Plotted By:	PDT
Checked By:	PDT

PREPARED UNDER THE DIRECTION OF
KEVIN P. ARNETT
 LT COLONEL, C.E. DISTRICT ENGINEER

Sketched: Hydro Survey Team Leader
 Recommended: Chief, Hydro Survey Section
 Approved: Chief, Construction Branch



LEGEND		Shoaling Area	Contours
--- Federal Navigation Channel	▨ Cable Area	● Shoalest Sounding within Channel Quarter**	— -30
— Federal Navigation Center Line	▭ Placement Area	⌫ Beacon, General	— -29
⋯ Cable Submarine	▨ Anchorage Area	♦ Red Navigation Buoy	— -28
- - - Cable Overhead	⊗ Obstruction Point	♦ Green Navigation Buoy	— -27
— Contour Line	✈ Wrecks-Submerged		— -26



NOTES:
 DRAWING NOT TO BE USED FOR NAVIGATION. ONLY CHANNEL CONDITION AT DATE OF SURVEY, THE LOCATION OF ALL NAVIGATION AIDS ARE BASED ON INFORMATION PROVIDED BY THE U.S. COAST GUARD. BUOY LOCATIONS REPRESENT THE POSITION OF THE SINKER ONLY.

SOUNDINGS WERE TAKEN BY FATHOMETER AND ARE SHOWN TO THE NEAREST TENTH OF A FOOT.

SOUNDINGS ARE BASED ON THE DATUM OF MEAN LOWER LOW WATER AT THE LOCALITY.

NORTH AMERICAN DATUM OF 1983 (NAD83), PROJECTED TO THE STATE PLANE COORDINATE SYSTEM (SPCS), CA ZONE II (0402). DISTANCE UNITS IN U.S. SURVEY FEET.

PLANE GRID AND COORDINATES ARE BASED ON LAMBERT PROJECTION, NAD 83, ZONE II CALIFORNIA AS DESCRIBED IN SPECIAL PUBLICATION NO. 235, PUBLISHED BY THE NATIONAL OCEAN SURVEY.

PROJECT DEPTH: -30'

VERTICAL DATUM: MLLW

THE LOCATION OF NAVIGATION AIDS ARE BASED ON AND PROVIDED BY THE U.S. COAST GUARD

CONTROLS:
 LOCATION: RIO VISTA
 NOAA STATION: 9415316
 BENCHMARK: 5316 B 1996 (NO PID)
 TIDE GAUGE: NAIL @ 8.2 FT MLLW
 METADATA: NAIL SET BY USACE 31 MARCH, 2014

LOCATION: PORT OF WEST SACRAMENTO
 NOAA STATION: 9415151
 BENCHMARK: POWS1 (NO PID)
 TIDE GAUGE: NAIL @ 10.0 FT MLLW
 METADATA: NAIL SET BY USACE 8 APRIL, 2014

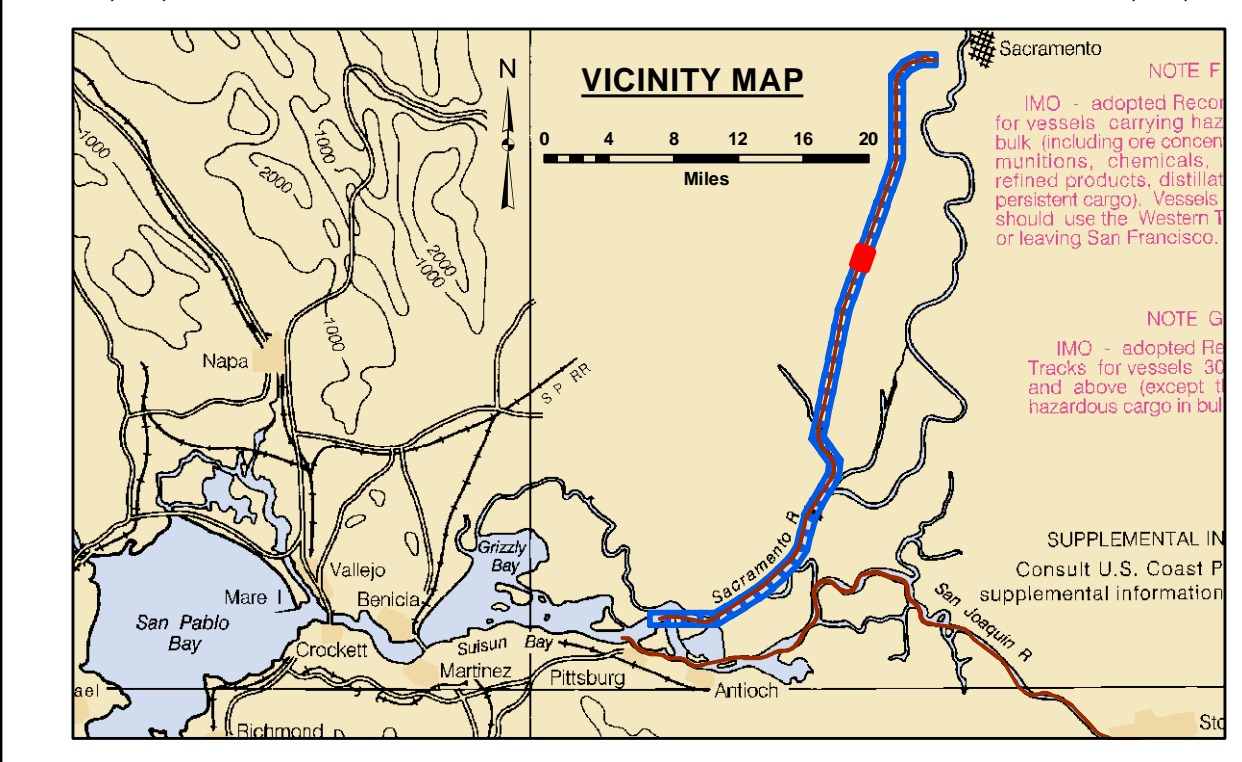
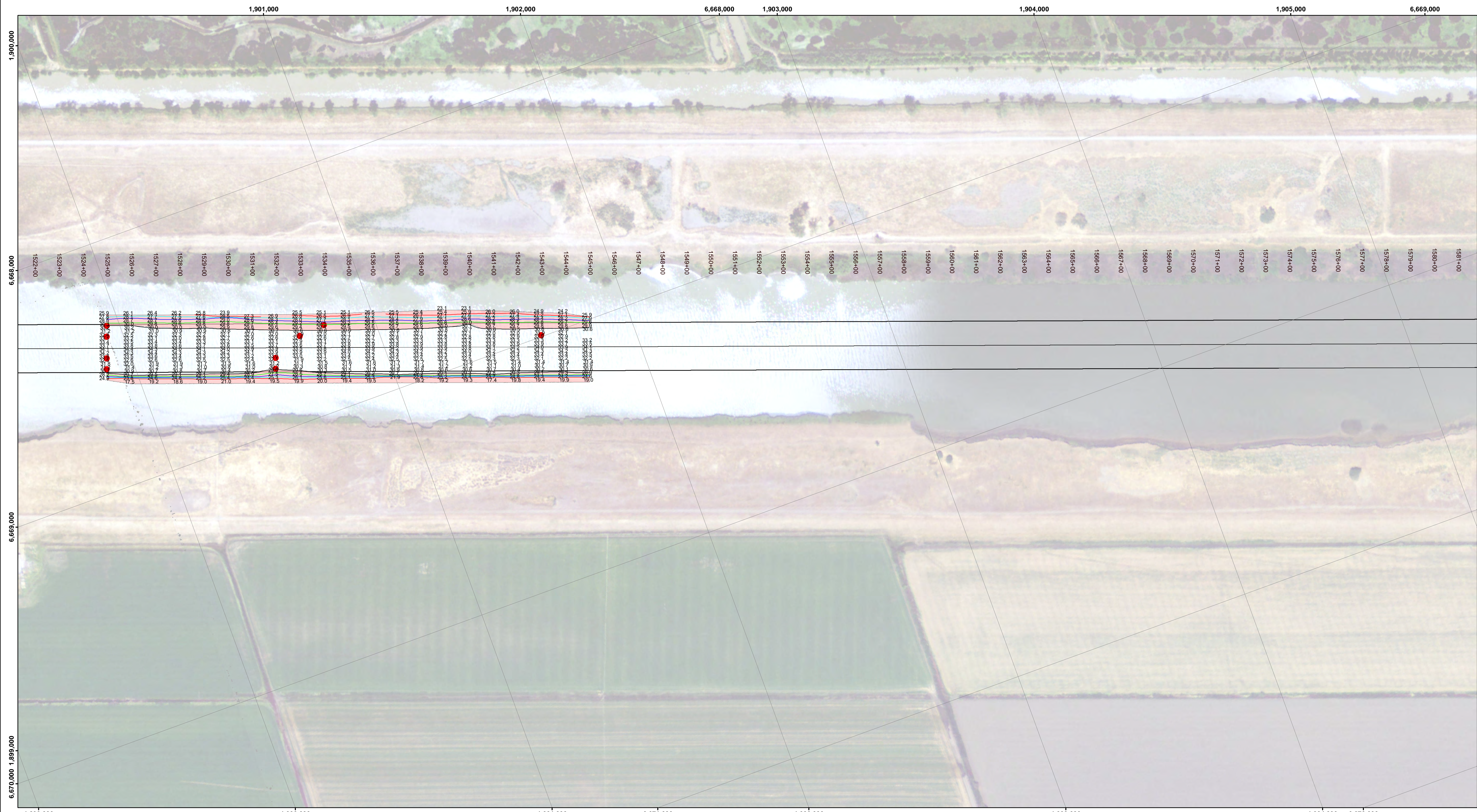
ALL HORIZONTAL POSITIONS AND MLLW ELEVATIONS WERE POST-PROCESSED USING PUBLIC GPS REFERENCE STATIONS IN THE AREA.

CALIFORNIA

SAN JOAQUIN COUNTY

SACRAMENTO RIVER
 PRE-DREDGE SURVEY
 06-07 JULY 2022

Sheet Reference Number
20 of 45

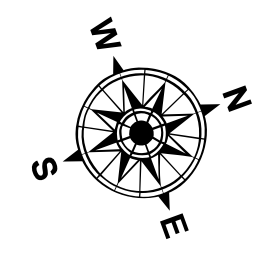
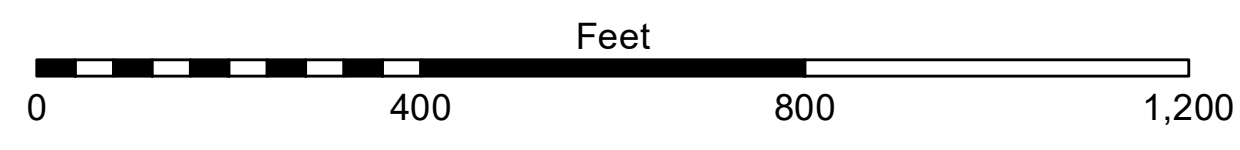


LEGEND

- Federal Navigation Channel
- Federal Navigation Center Line
- Cable Submarine
- - - Cable Overhead
- Contour Line
- ▨ Cable Area
- Placement Area
- ⊠ Anchorage Area
- ⊗ Obstruction Point
- ✈ Wrecks-Submerged
- Shoaling Area
- Shoalest Sounding within Channel Quarter**
- ⊥ Beacon, General
- ◆ Red Navigation Buoy
- ◆ Green Navigation Buoy

Contours

- -30
- -29
- -28
- -27
- -26



NOTES:
DRAWING NOT TO BE USED FOR NAVIGATION. ONLY CHANNEL CONDITION AT DATE OF SURVEY, THE LOCATION OF ALL NAVIGATION AIDS ARE BASED ON INFORMATION PROVIDED BY THE U.S. COAST GUARD. BUOY LOCATIONS REPRESENT THE POSITION OF THE SINKER ONLY.

SOUNDINGS WERE TAKEN BY FATHOMETER AND ARE SHOWN TO THE NEAREST TENTH OF A FOOT.

SOUNDINGS ARE BASED ON THE DATUM OF MEAN LOWER LOW WATER AT THE LOCALITY.

NORTH AMERICAN DATUM OF 1983 (NAD83), PROJECTED TO THE STATE PLANE COORDINATE SYSTEM (SPCS), CA ZONE II (0402). DISTANCE UNITS IN U.S. SURVEY FEET.

PLANE GRID AND COORDINATES ARE BASED ON LAMBERT PROJECTION, NAD 83, ZONE II CALIFORNIA AS DESCRIBED IN SPECIAL PUBLICATION NO. 235, PUBLISHED BY THE NATIONAL OCEAN SURVEY.

PROJECT DEPTH: -30'

VERTICAL DATUM: MLLW

THE LOCATION OF NAVIGATION AIDS ARE BASED ON AND PROVIDED BY THE U.S. COAST GUARD

CONTROLS:
LOCATION: RIO VISTA
NOAA STATION: 9415316
BENCHMARK: 5316 B 1996 (NO PID)
TIDE GAUGE: NAIL @ 8.2 FT MLLW
METADATA: NAIL SET BY USACE 31 MARCH, 2014

LOCATION: PORT OF WEST SACRAMENTO
NOAA STATION: 9416131
BENCHMARK: POWS1 (NO PID)
TIDE GAUGE: NAIL @ 10.0 FT MLLW
METADATA: NAIL SET BY USACE 8 APRIL, 2014

ALL HORIZONTAL POSITIONS AND MLLW ELEVATIONS WERE POST-PROCESSED USING PUBLIC GPS REFERENCE STATIONS IN THE AREA.

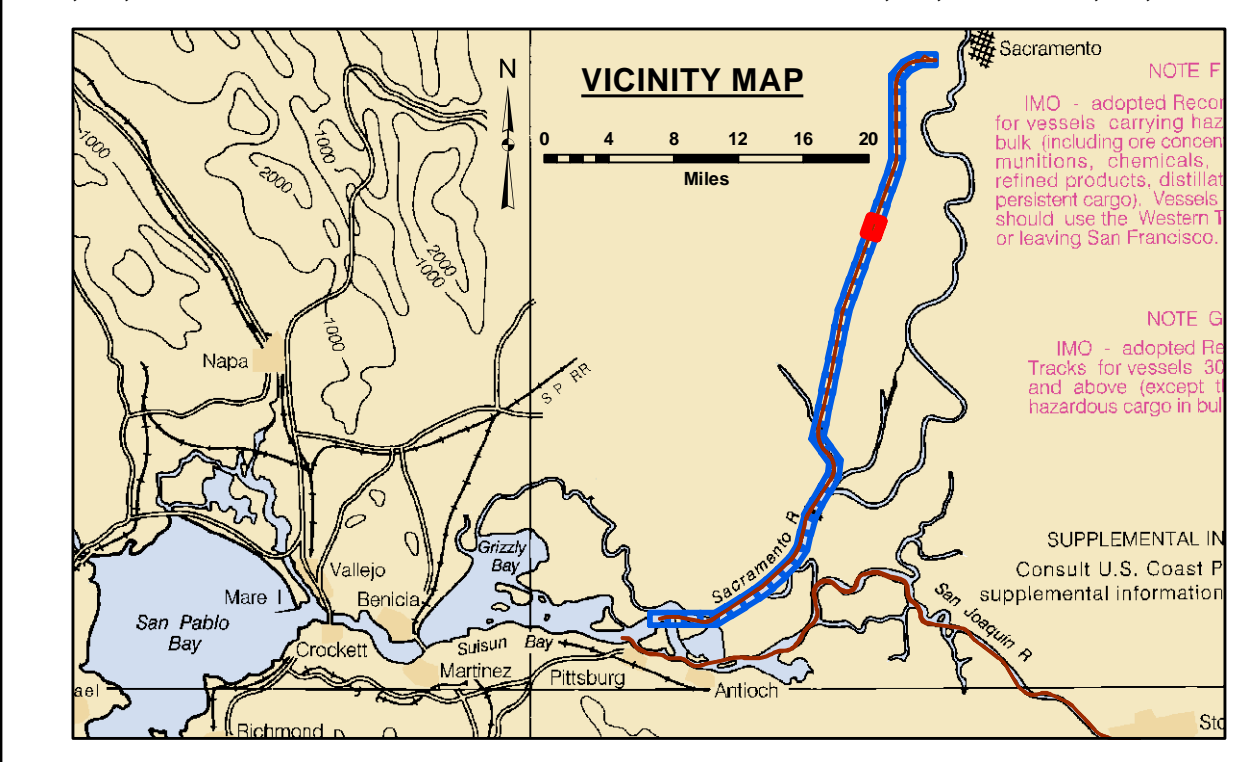
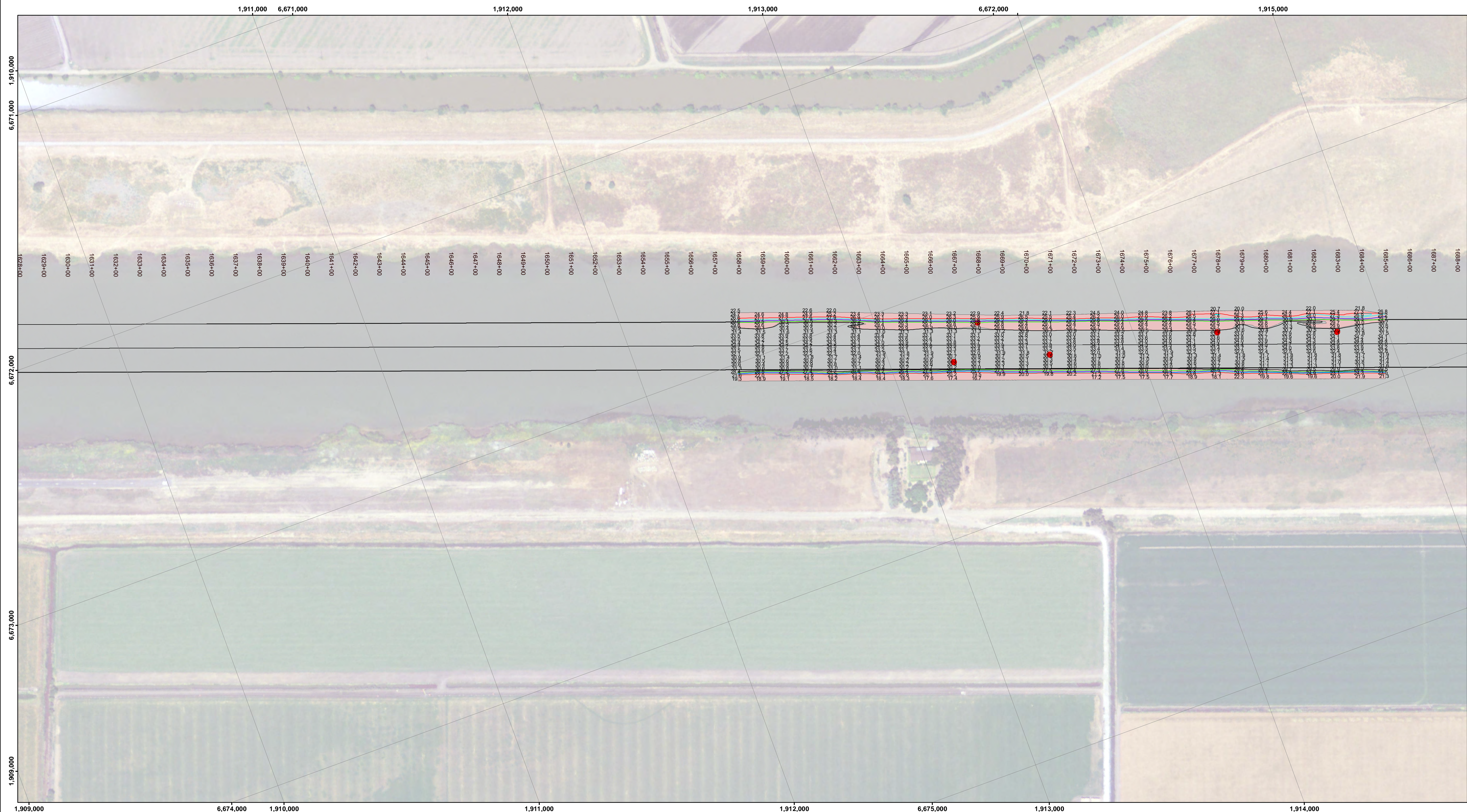


DISCLAIMER: The United States Government furnishes this data as a service to the user. The user is responsible for the results of any of the application of the data for other than its intended purpose. The user is responsible for the results of any of the application of the data for other than its intended purpose. The user is responsible for the results of any of the application of the data for other than its intended purpose.

Chart Date:	July 13, 2022
Surveyed By:	KEVIN P. ARNETT
Plotted By:	PDT
Checked By:	PDT
Drawn By:	PDT

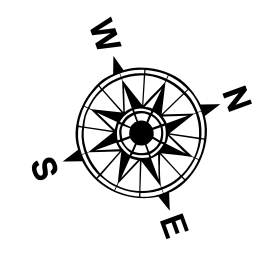
CALIFORNIA
SAN JOAQUIN COUNTY
SACRAMENTO RIVER
PRE-DREDGE SURVEY
06-07 JULY 2022

Sheet Reference Number
31 of 45



0 400 800 1,200 Feet

--- Federal Navigation Channel	▨ Cable Area	■ Shoaling Area	— Contours
— Federal Navigation Center Line	□ Placement Area	● Shoalest Sounding within Channel Quarter**	— -30
..... Cable Submarine	⊠ Anchorage Area	⊥ Beacon, General	— -29
- - - Cable Overhead	⊗ Obstruction Point	◆ Red Navigation Buoy	— -28
— Contour Line	★ Wrecks-Submerged	◆ Green Navigation Buoy	— -27
			— -26



NOTES:
DRAWING NOT TO BE USED FOR NAVIGATION. ONLY CHANNEL CONDITION AT DATE OF SURVEY, THE LOCATION OF ALL NAVIGATION AIDS ARE BASED ON INFORMATION PROVIDED BY THE U.S. COAST GUARD. BUOY LOCATIONS REPRESENT THE POSITION OF THE SINKER ONLY.

SOUNDINGS WERE TAKEN BY FATHOMETER AND ARE SHOWN TO THE NEAREST TENTH OF A FOOT.

SOUNDINGS ARE BASED ON THE DATUM OF MEAN LOWER LOW WATER AT THE LOCALITY.

NORTH AMERICAN DATUM OF 1983 (NAD83), PROJECTED TO THE STATE PLANE COORDINATE SYSTEM (SPCS), CA ZONE II (0402). DISTANCE UNITS IN U.S. SURVEY FEET.

PLANE GRID AND COORDINATES ARE BASED ON LAMBERT PROJECTION, NAD 83, ZONE II CALIFORNIA AS DESCRIBED IN SPECIAL PUBLICATION NO. 235, PUBLISHED BY THE NATIONAL OCEAN SURVEY.

PROJECT DEPTH: -30'

VERTICAL DATUM: MLLW

THE LOCATION OF NAVIGATION AIDS ARE BASED ON AND PROVIDED BY THE U.S. COAST GUARD

CONTROLS:
LOCATION: RIO VISTA
NOAA STATION: 9415316
BENCHMARK: 5316 B 1996 (NO PID)
TIDE GAUGE: NAIL @ 8.2 FT MLLW
METADATA: NAIL SET BY USACE 31 MARCH, 2014

LOCATION: PORT OF WEST SACRAMENTO
NOAA STATION: 9416151
BENCHMARK: POWS1 (NO PID)
TIDE GAUGE: NAIL @ 10.0 FT MLLW
METADATA: NAIL SET BY USACE 8 APRIL, 2014

ALL HORIZONTAL POSITIONS AND MLLW ELEVATIONS WERE POST-PROCESSED USING PUBLIC GPS REFERENCE STATIONS IN THE AREA.



DISCLAIMER: The United States Government furnishes this data as a public service and does not warrant the accuracy, completeness, or reliability of the data. The user is responsible for the results of any of the application of the data for other than its intended purpose.

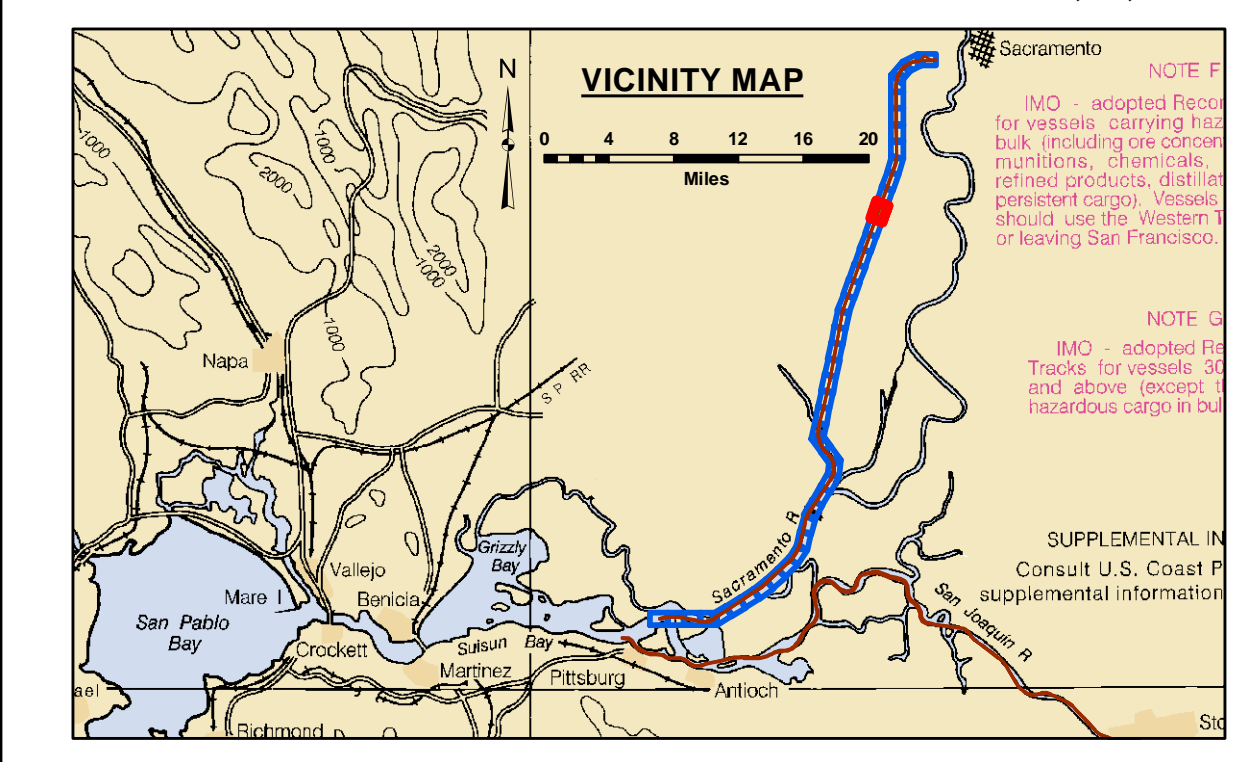
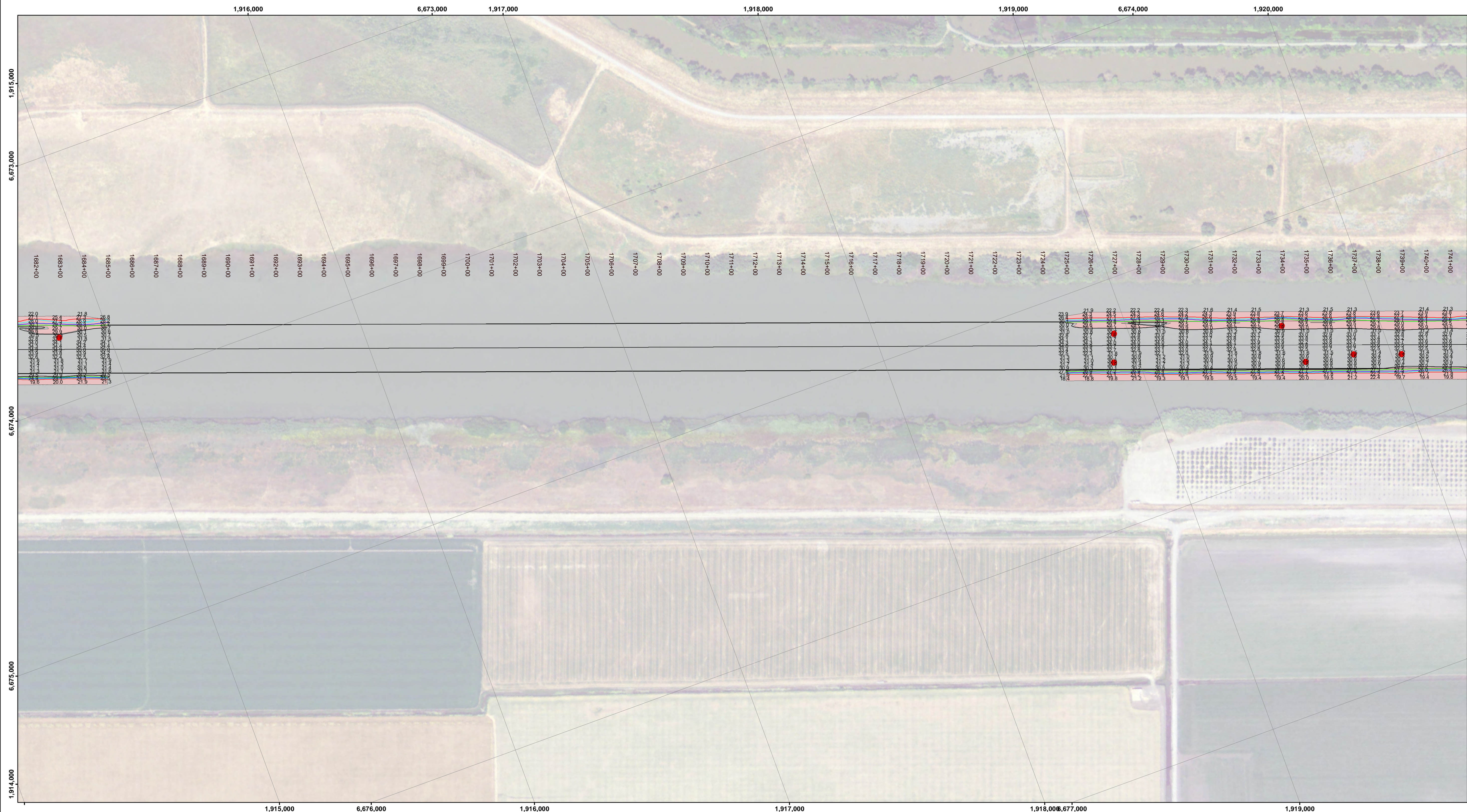
DISCLAIMER: The data represents the results of data collection/processing for a specific US Army Corps of Engineers project. The data is not intended for use in any other project. The user is responsible for the results of any of the application of the data for other than its intended purpose.

Chart Date:	July 13, 2022
Designed by:	PDT
Drawn by:	PDT
Surveyed By:	KEVIN P. ARNETT
Plotted By:	PDT
Checked By:	PDT
Approved:	Chief, Construction Branch

PREPARED UNDER THE DIRECTION OF
LT COLONEL C.E. DISTRICT ENGINEER
KEVIN P. ARNETT
Hydro Survey Team Leader
Chief, Hydro Survey Section
Approved: Chief, Construction Branch

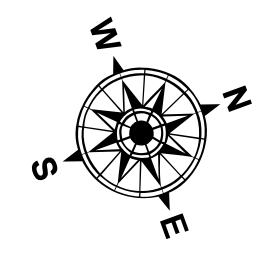
CALIFORNIA
SAN JOAQUIN COUNTY
SACRAMENTO RIVER
PRE-DREDGE SURVEY
06-07 JULY 2022

Sheet Reference Number
33 of 45



LEGEND

--- Federal Navigation Channel	▨ Cable Area	■ Shoaling Area	— Contours
— Federal Navigation Center Line	□ Placement Area	● Shoalest Sounding within Channel Quarter**	— -30
⋯ Cable Submarine	⊠ Anchorage Area	⊥ Beacon, General	— -29
- - - Cable Overhead	⊗ Obstruction Point	⬮ Red Navigation Buoy	— -28
— Contour Line	✈ Wrecks-Submerged	⬮ Green Navigation Buoy	— -27
			— -26



NOTES:
DRAWING NOT TO BE USED FOR NAVIGATION. ONLY CHANNEL CONDITION AT DATE OF SURVEY, THE LOCATION OF ALL NAVIGATION AIDS ARE BASED ON INFORMATION PROVIDED BY THE U.S. COAST GUARD. BUOY LOCATIONS REPRESENT THE POSITION OF THE SINKER ONLY.

SOUNDINGS WERE TAKEN BY FATHOMETER AND ARE SHOWN TO THE NEAREST TENTH OF A FOOT.

SOUNDINGS ARE BASED ON THE DATUM OF MEAN LOWER LOW WATER AT THE LOCALITY.

NORTH AMERICAN DATUM OF 1983 (NAD83), PROJECTED TO THE STATE PLANE COORDINATE SYSTEM (SPCS), CA ZONE II (0402). DISTANCE UNITS IN U.S. SURVEY FEET.

PLANE GRID AND COORDINATES ARE BASED ON LAMBERT PROJECTION, NAD 83, ZONE II CALIFORNIA AS DESCRIBED IN SPECIAL PUBLICATION NO. 235, PUBLISHED BY THE NATIONAL OCEAN SURVEY.

PROJECT DEPTH: -30'

VERTICAL DATUM: MLLW

THE LOCATION OF NAVIGATION AIDS ARE BASED ON AND PROVIDED BY THE U.S. COAST GUARD

CONTROLS:
LOCATION: RIO VISTA
NOAA STATION: 9415316
BENCHMARK: 5316 B 1996 (NO PID)
TIDE GAUGE: NAIL @ 8.2 FT MLLW
METADATA: NAIL SET BY USACE 31 MARCH, 2014

LOCATION: PORT OF WEST SACRAMENTO
NOAA STATION: 9416131
BENCHMARK: POWS1 (NO PID)
TIDE GAUGE: NAIL @ 10.0 FT MLLW
METADATA: NAIL SET BY USACE 8 APRIL, 2014

ALL HORIZONTAL POSITIONS AND MLLW ELEVATIONS WERE POST-PROCESSED USING PUBLIC GPS REFERENCE STATIONS IN THE AREA.

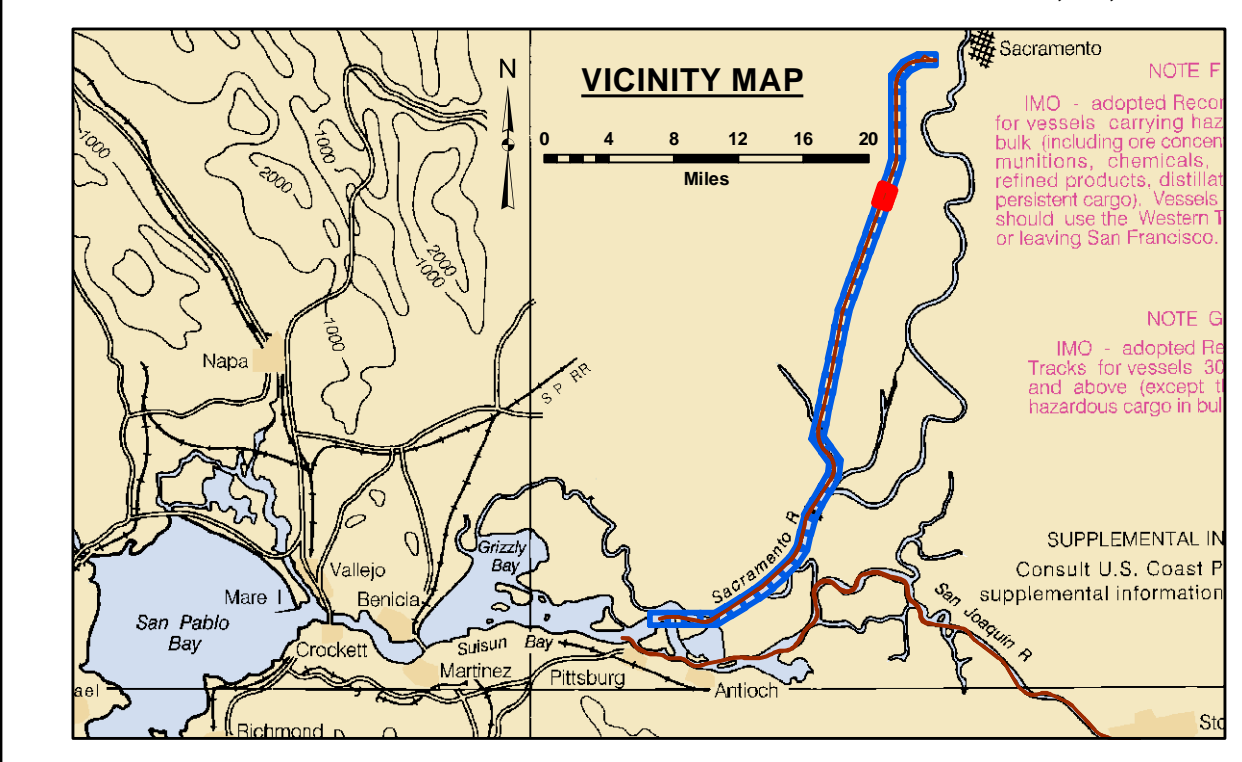
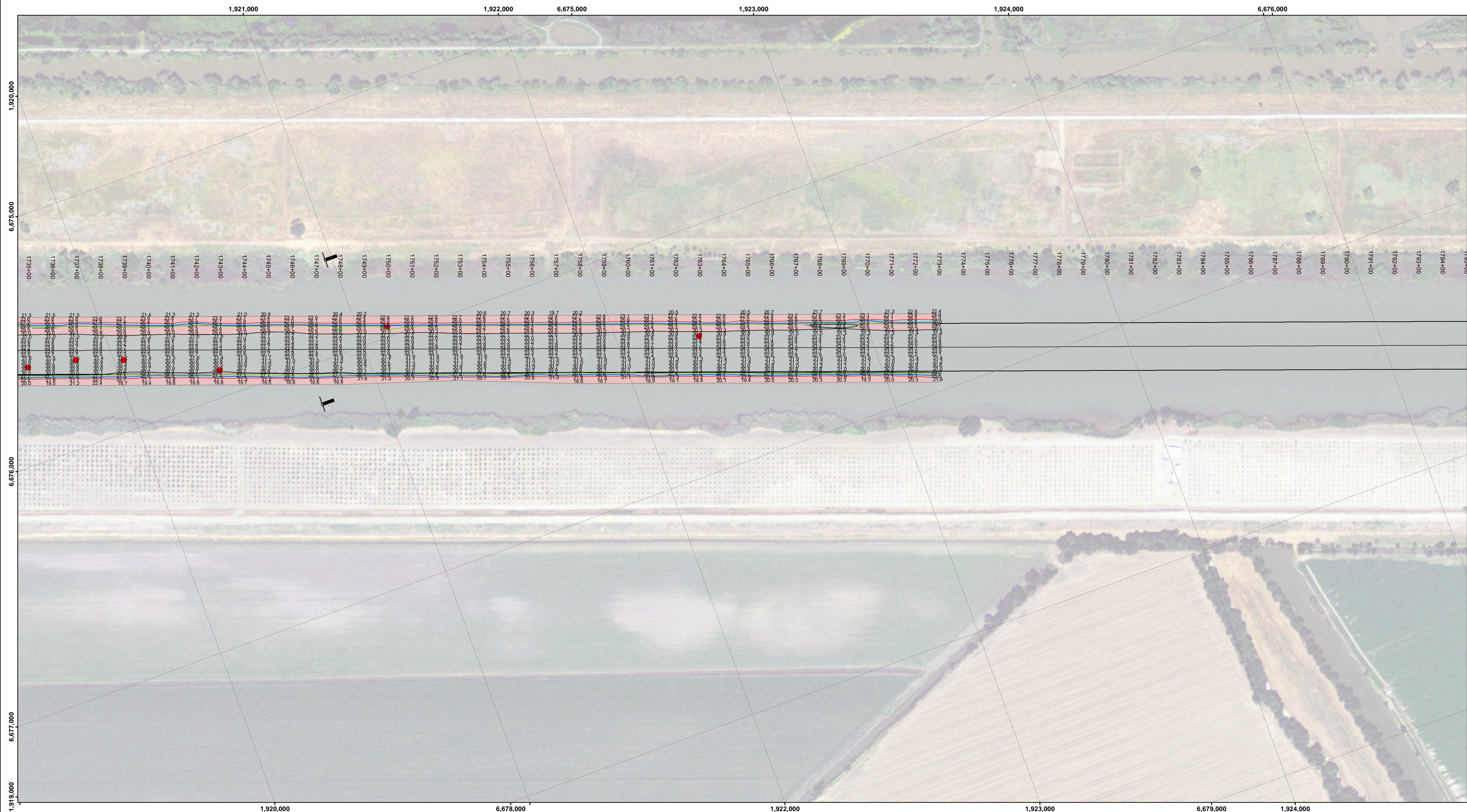


DISCLAIMER: The United States Government borrows no liability for the use of the data for any purpose other than that for which it was provided. The user is responsible for the results of any application of the data for other than its intended purpose. The user is responsible for the results of any application of the data for other than its intended purpose. The user is responsible for the results of any application of the data for other than its intended purpose.

Chart Date:	Jul 13, 2022
Designed by:	PDT
Drawn by:	PDT
Surveyed By:	KEVIN P. ARNETT
Plotted By:	PDT
Checked By:	PDT
Approved:	Chief, Hydro Survey Section
Approved:	Chief, Construction Branch

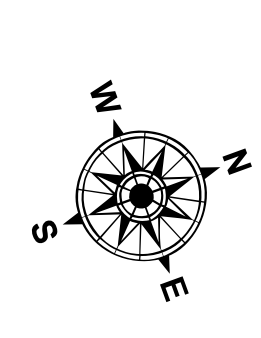
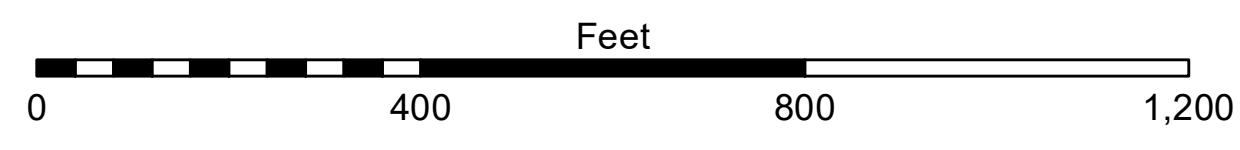
CALIFORNIA
SAN JOAQUIN COUNTY
SACRAMENTO RIVER
PRE-DREDGE SURVEY
06-07 JULY 2022

Sheet Reference Number
34 of 45



LEGEND

--- Federal Navigation Channel	▨ Cable Area	■ Shoaling Area	— Contours
— Federal Navigation Center Line	□ Placement Area	● Shoalest Sounding within Channel Quarter**	— -30
..... Cable Submarine	▭ Anchorage Area	⬇ Beacon, General	— -29
- - - Cable Overhead	⊗ Obstruction Point	◆ Red Navigation Buoy	— -28
— Contour Line	✈ Wrecks-Submerged	◆ Green Navigation Buoy	— -27
			— -26



NOTES:
DRAWING NOT TO BE USED FOR NAVIGATION. ONLY CHANNEL CONDITION AT DATE OF SURVEY, THE LOCATION OF ALL NAVIGATION AIDS ARE BASED ON INFORMATION PROVIDED BY THE U.S. COAST GUARD. BUOY LOCATIONS REPRESENT THE POSITION OF THE SINKER ONLY.

SOUNDINGS WERE TAKEN BY FATHOMETER AND ARE SHOWN TO THE NEAREST TENTH OF A FOOT.

SOUNDINGS ARE BASED ON THE DATUM OF MEAN LOWER LOW WATER AT THE LOCALITY.

NORTH AMERICAN DATUM OF 1983 (NAD83), PROJECTED TO THE STATE PLANE COORDINATE SYSTEM (SPCS), CA ZONE II (0402). DISTANCE UNITS IN U.S. SURVEY FEET.

PLANE GRID AND COORDINATES ARE BASED ON LAMBERT PROJECTION, NAD 83, ZONE II CALIFORNIA AS DESCRIBED IN SPECIAL PUBLICATION NO. 235, PUBLISHED BY THE NATIONAL OCEAN SURVEY.

PROJECT DEPTH: -30'

VERTICAL DATUM: MLLW

THE LOCATION OF NAVIGATION AIDS ARE BASED ON AND PROVIDED BY THE U.S. COAST GUARD

CONTROLS:
LOCATION: RIO VISTA
NOAA STATION: 9415316
BENCHMARK: 5316 B 1996 (NO PID)
TIDE GAUGE: NAIL @ 8.2 FT MLLW
METADATA: NAIL SET BY USACE 31 MARCH, 2014

LOCATION: PORT OF WEST SACRAMENTO
NOAA STATION: 9416151
BENCHMARK: POWS1 (NO PID)
TIDE GAUGE: NAIL @ 10.0 FT MLLW
METADATA: NAIL SET BY USACE 8 APRIL, 2014

ALL HORIZONTAL POSITIONS AND MLLW ELEVATIONS WERE POST-PROCESSED USING PUBLIC GPS REFERENCE STATIONS IN THE AREA.



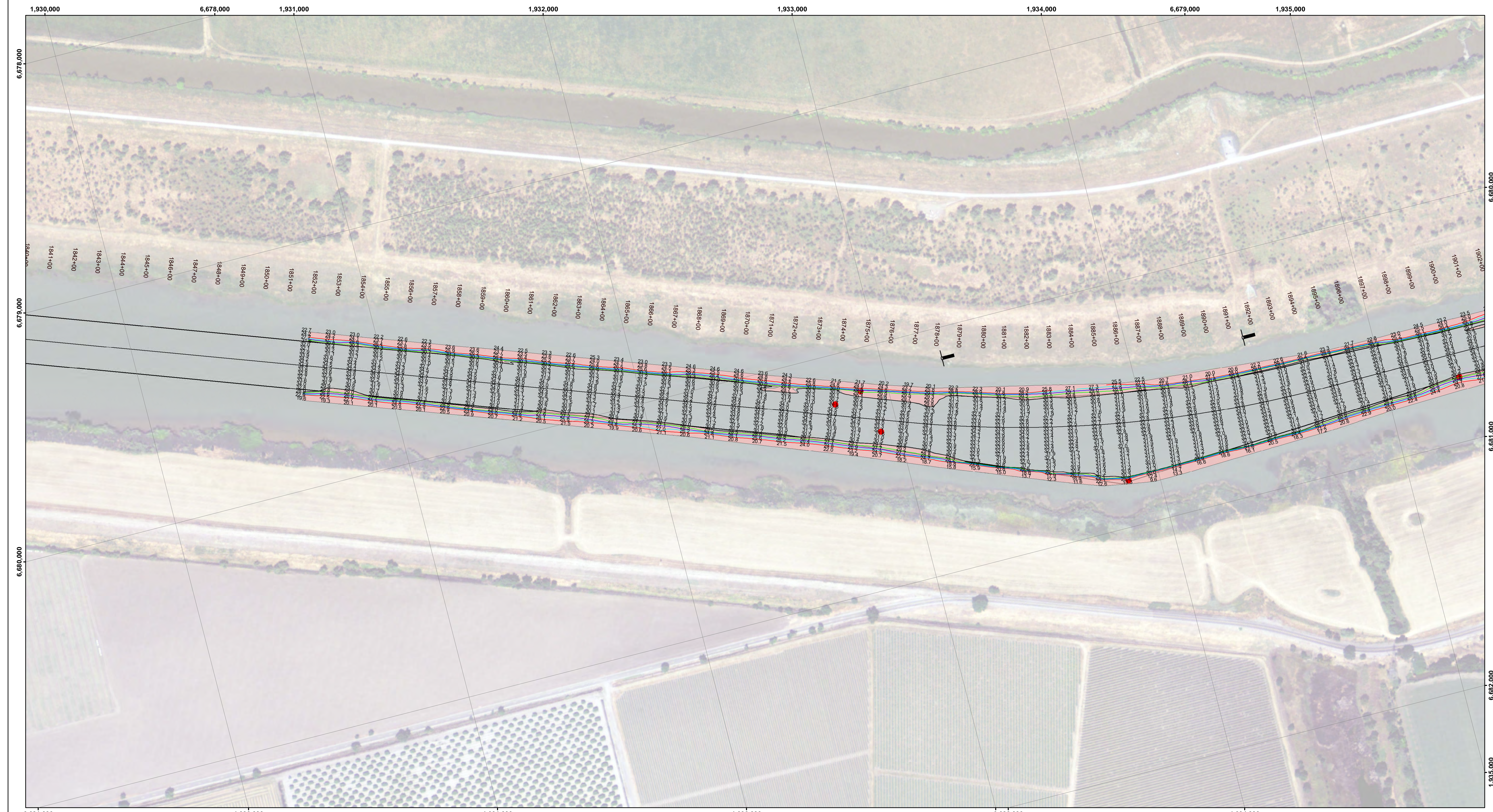
DISCLAIMER: The United States Government furnishes this data as a service to the public and does not warrant the accuracy, completeness, or reliability of the data. The user is responsible for the results of any of the application of the data for other than its intended purpose.

ACCESS CONSTRAINTS: The United States Government furnishes this data as a service to the public and does not warrant the accuracy, completeness, or reliability of the data. The user is responsible for the results of any of the application of the data for other than its intended purpose.

Chart Date:	July 13, 2022
Surveyed By:	KEVIN P. ARNETT
Plotted By:	PDT
Checked By:	PDT
Drawn By:	PDT

CALIFORNIA
SAN JOAQUIN COUNTY
SACRAMENTO RIVER
PRE-DREDGE SURVEY
06-07 JULY 2022

Sheet Reference Number
35 of 45

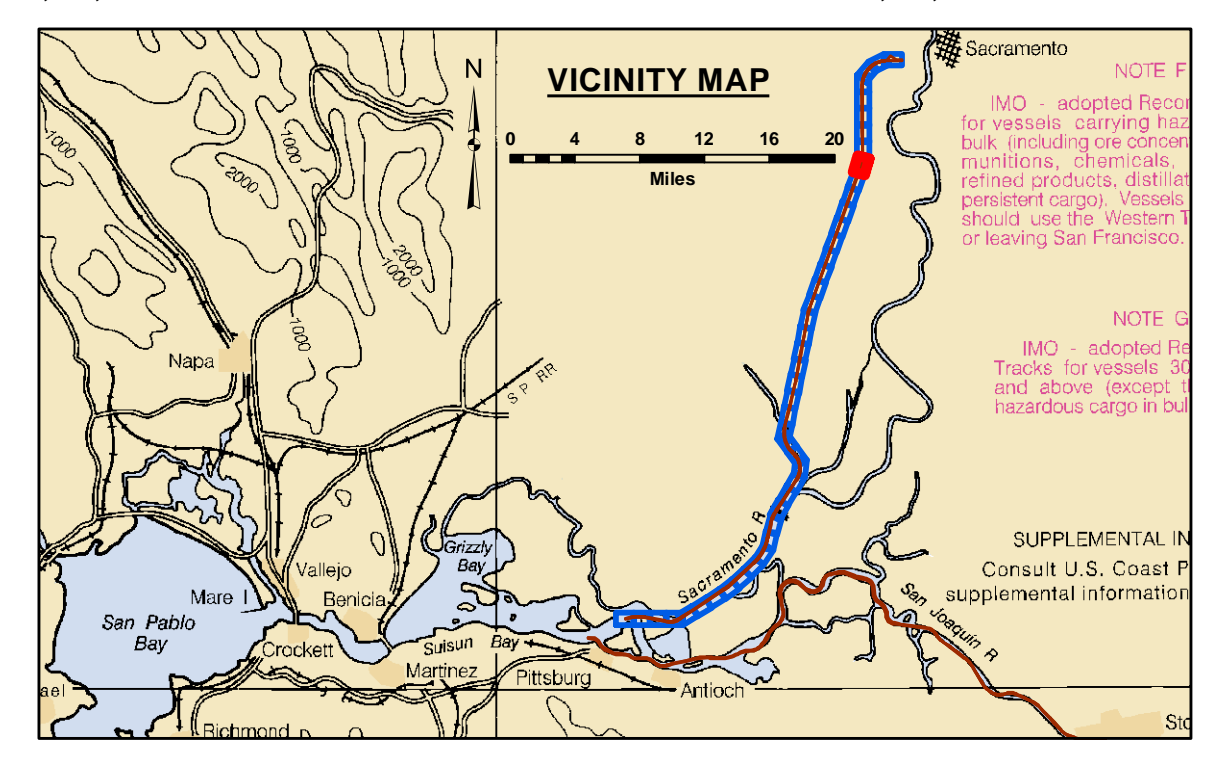


DISCLAIMER
 The United States Government furnishes this data as a public service and does not warrant the accuracy, completeness, or reliability of the information and the data furnished. The United States shall be under no liability whatsoever to any person by reason of any use of the information and the data furnished. The recipient may not transfer these data to others without also transferring this Disclaimer.

Chart Date:	July 13, 2022
Designed by:	PDT
Drawn by:	PDT
Surveyed By:	KEVIN P. ARNETT
Plotted By:	PDT
Checked By:	PDT
Approved:	Chief, Hydro Survey Section
Approved:	Chief, Construction Branch

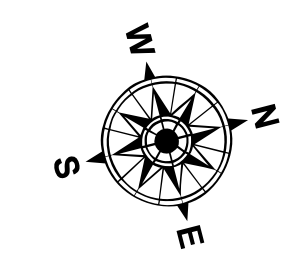
CALIFORNIA
 SAN JOAQUIN COUNTY
SACRAMENTO RIVER
 PRE-DREDGE SURVEY
 06-07 JULY 2022

Sheet Reference Number
37 of 45



0 400 800 1,200 Feet

--- Federal Navigation Channel	▨ Cable Area	▭ Shoaling Area	— Contours
— Federal Navigation Center Line	▭ Placement Area	● Shoalest Sounding within Channel Quarter**	— -30
..... Cable Submarine	▭ Anchorage Area	⊥ Beacon, General	— -29
- - - Cable Overhead	⊗ Obstruction Point	◆ Red Navigation Buoy	— -28
— Contour Line	✈ Wrecks-Submerged	◆ Green Navigation Buoy	— -27
			— -26



NOTES:
 DRAWING NOT TO BE USED FOR NAVIGATION. ONLY CHANNEL CONDITION AT DATE OF SURVEY, THE LOCATION OF ALL NAVIGATION AIDS ARE BASED ON INFORMATION PROVIDED BY THE U.S. COAST GUARD. BUOY LOCATIONS REPRESENT THE POSITION OF THE SINKER ONLY.

SOUNDINGS WERE TAKEN BY FATHOMETER AND ARE SHOWN TO THE NEAREST TENTH OF A FOOT.

SOUNDINGS ARE BASED ON THE DATUM OF MEAN LOWER LOW WATER AT THE LOCALITY.

NORTH AMERICAN DATUM OF 1983 (NAD83), PROJECTED TO THE STATE PLANE COORDINATE SYSTEM (SPCS), CA ZONE II (0402). DISTANCE UNITS IN U.S. SURVEY FEET.

PLANE GRID AND COORDINATES ARE BASED ON LAMBERT PROJECTION, NAD 83, ZONE II CALIFORNIA AS DESCRIBED IN SPECIAL PUBLICATION NO. 235, PUBLISHED BY THE NATIONAL OCEAN SURVEY.

PROJECT DEPTH: -30'

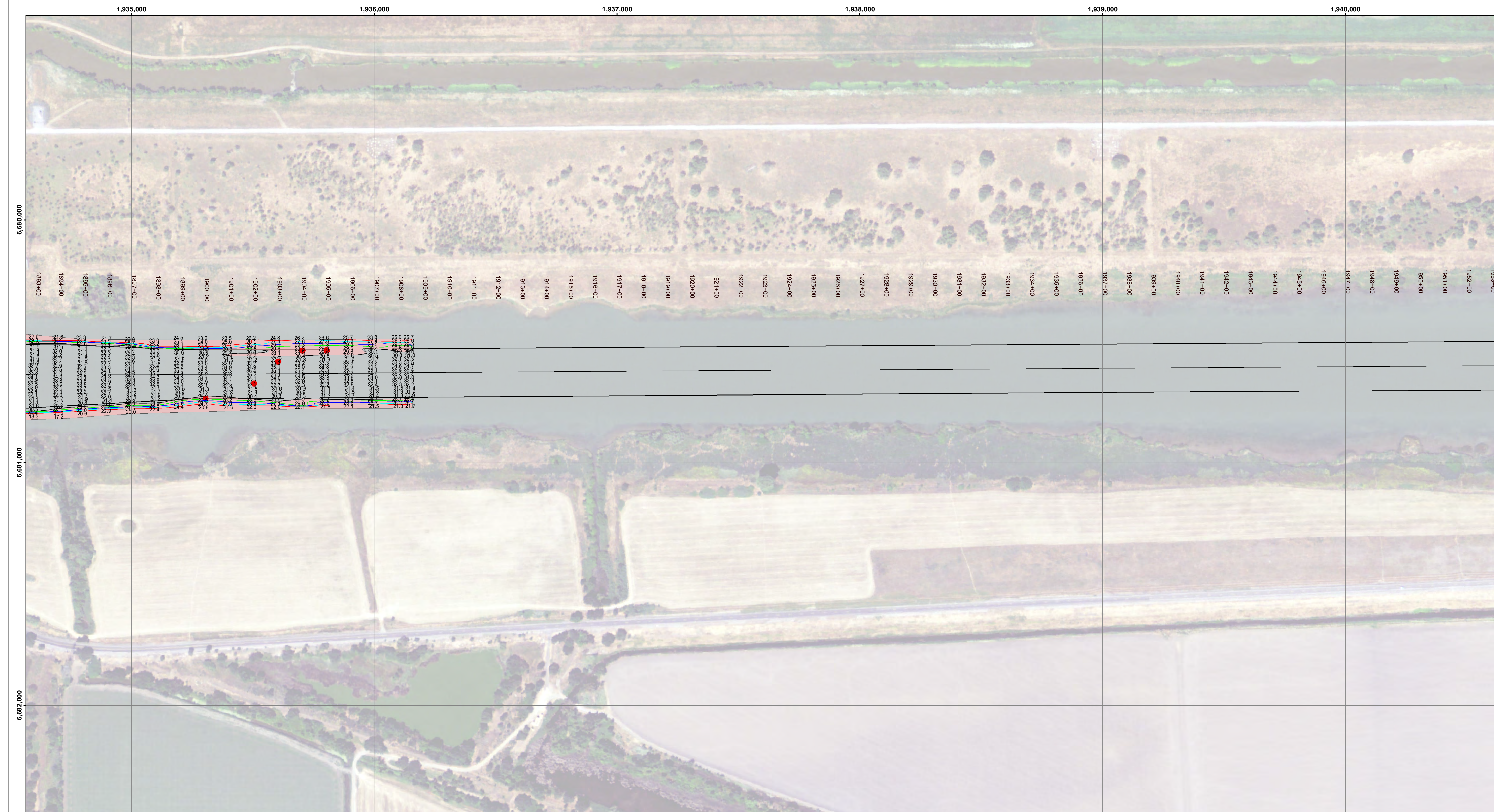
VERTICAL DATUM: MLLW

THE LOCATION OF NAVIGATION AIDS ARE BASED ON AND PROVIDED BY THE U.S. COAST GUARD

CONTROLS:
 LOCATION: RIO VISTA
 NOAA STATION: 9415316
 BENCHMARK: 5316 B 1996 (NO PID)
 TIDE GAUGE: NAIL @ 8.2 FT MLLW
 METADATA: NAIL SET BY USACE 31 MARCH, 2014

LOCATION: PORT OF WEST SACRAMENTO
 NOAA STATION: 9415151
 BENCHMARK: POWS1 (NO PID)
 TIDE GAUGE: NAIL @ 10.0 FT MLLW
 METADATA: NAIL SET BY USACE 8 APRIL, 2014

ALL HORIZONTAL POSITIONS AND MLLW ELEVATIONS WERE POST-PROCESSED USING PUBLIC GPS REFERENCE STATIONS IN THE AREA.

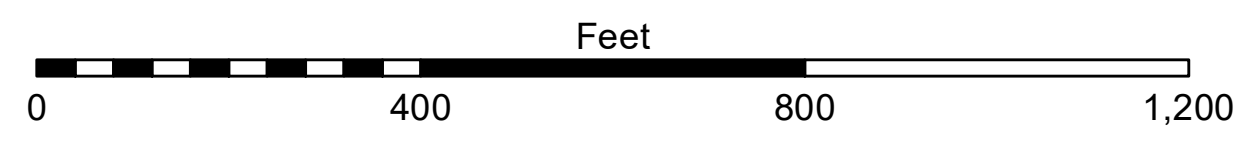
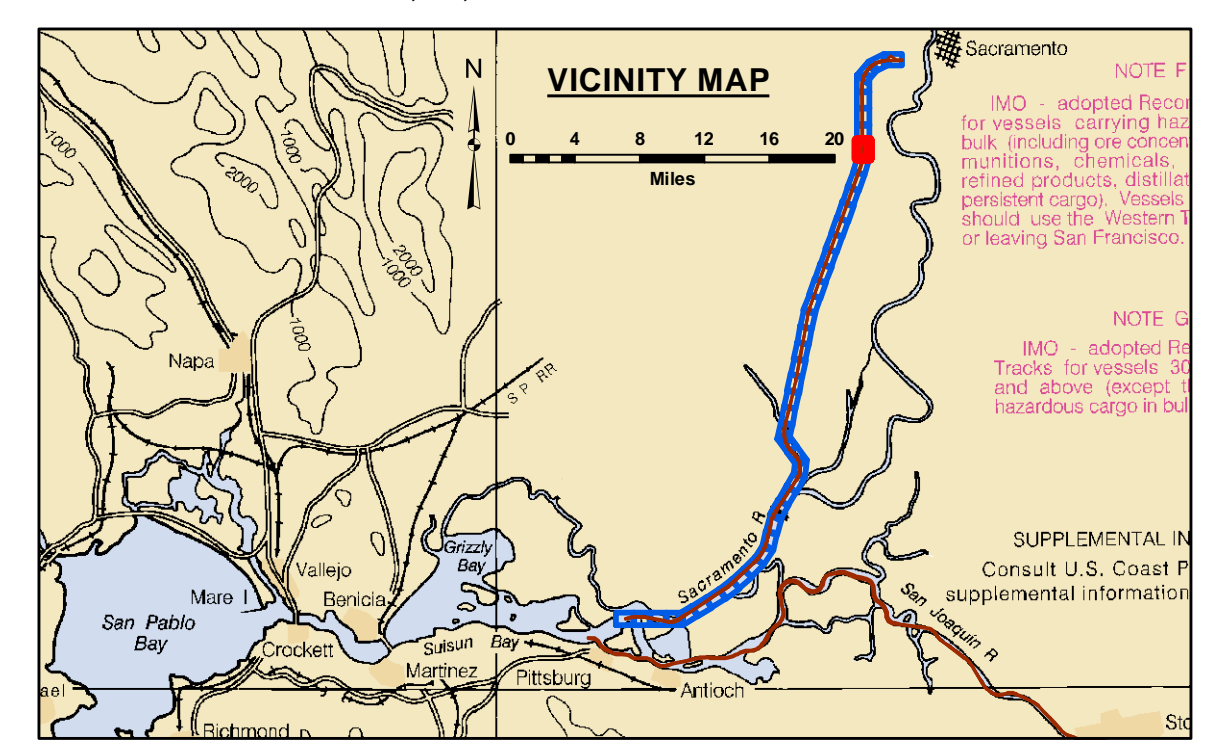


DISCLAIMER
 The United States Government furnishes this data as a public service. It is not intended for use in any other project or for any other purpose. The user is responsible for the results of any application of the data for other than its intended purpose. The user is responsible for the results of any application of the data for other than its intended purpose. The user is responsible for the results of any application of the data for other than its intended purpose.

Chart Date:	July 13, 2022
Designed by:	PDT
Drawn by:	PDT
Checked by:	PDT
Plotted by:	PDT
Surveyed By:	

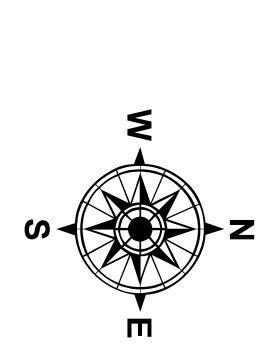
CALIFORNIA
 SAN JOAQUIN COUNTY
SACRAMENTO RIVER
 PRE-DREDGE SURVEY
 06-07 JULY 2022

Sheet Reference Number
38 of 45



LEGEND

--- Federal Navigation Channel	▨ Cable Area	■ Shoaling Area	— Contours
— Federal Navigation Center Line	□ Placement Area	● Shoalest Sounding within Channel Quarter**	— -30
..... Cable Submarine	▭ Anchorage Area	⊥ Beacon, General	— -29
- - - Cable Overhead	⊗ Obstruction Point	◆ Red Navigation Buoy	— -28
— Contour Line	✈ Wrecks-Submerged	◆ Green Navigation Buoy	— -27
			— -26



NOTES:
 DRAWING NOT TO BE USED FOR NAVIGATION. ONLY CHANNEL CONDITION AT DATE OF SURVEY, THE LOCATION OF ALL NAVIGATION AIDS ARE BASED ON INFORMATION PROVIDED BY THE U.S. COAST GUARD. BUOY LOCATIONS REPRESENT THE POSITION OF THE SINKER ONLY.

SOUNDINGS WERE TAKEN BY FATHOMETER AND ARE SHOWN TO THE NEAREST TENTH OF A FOOT.

SOUNDINGS ARE BASED ON THE DATUM OF MEAN LOWER LOW WATER AT THE LOCALITY.

NORTH AMERICAN DATUM OF 1983 (NAD83), PROJECTED TO THE STATE PLANE COORDINATE SYSTEM (SPCS), CA ZONE II (0402). DISTANCE UNITS IN U.S. SURVEY FEET.

PLANE GRID AND COORDINATES ARE BASED ON LAMBERT PROJECTION, NAD 83, ZONE II CALIFORNIA AS DESCRIBED IN SPECIAL PUBLICATION NO. 235, PUBLISHED BY THE NATIONAL OCEAN SURVEY.

PROJECT DEPTH: -30'

VERTICAL DATUM: MLLW

THE LOCATION OF NAVIGATION AIDS ARE BASED ON AND PROVIDED BY THE U.S. COAST GUARD

CONTROLS:
 LOCATION: RIO VISTA
 NOAA STATION: 9415316
 BENCHMARK: 5316 B 1996 (NO PID)
 TIDE GAUGE: NAIL @ 8.2 FT MLLW
 METADATA: NAIL SET BY USACE 31 MARCH, 2014

LOCATION: PORT OF WEST SACRAMENTO
 NOAA STATION: 9416131
 BENCHMARK: POWS1 (NO PID)
 TIDE GAUGE: NAIL @ 10.0 FT MLLW
 METADATA: NAIL SET BY USACE 8 APRIL, 2014

ALL HORIZONTAL POSITIONS AND MLLW ELEVATIONS WERE POST-PROCESSED USING PUBLIC GPS REFERENCE STATIONS IN THE AREA.