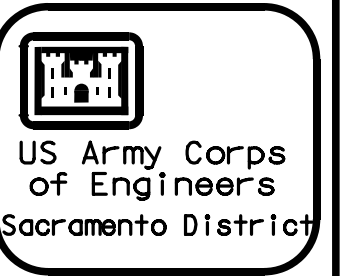


**NOTES:**

1. THE LOCATION OF THE NAVIGATION AIDS WERE PLOTTED FROM DATA FURNISHED BY THE 11TH COAST GUARD.
2. BUOY LOCATIONS REPRESENT THE POSITION OF THE SINKER ONLY.
3. DRAWINGS NOT TO BE USED AS NAVIGATION CHART AND REPRESENT ONLY THE CHANNEL CONDITION AT THE TIME OF THE SOUNDINGS.
4. DATE OF SOUNDINGS: APRIL 1, 2014
5. 30' DEPTH LINE SHOWN IN CHANNEL.
6. AERIAL PHOTOGRAPHY TAKEN IN 2008



Date	Rev.

DESIGNED BY: BRYAN HOLM	DATE-APPROVED REV.#: 52-06-0417
DWN BY: B. HOLM	DESIGN FILE NO.:
REVIEWED BY: RICHARD A. TORBIK CHIEF, CIVIL ENGR. SEC. B.	DRAWING CODES: CONDITION SOUNDINGS
SUBMITTED BY:	FILE NAME: 14-MAY-2014
	PLOT SCALE:

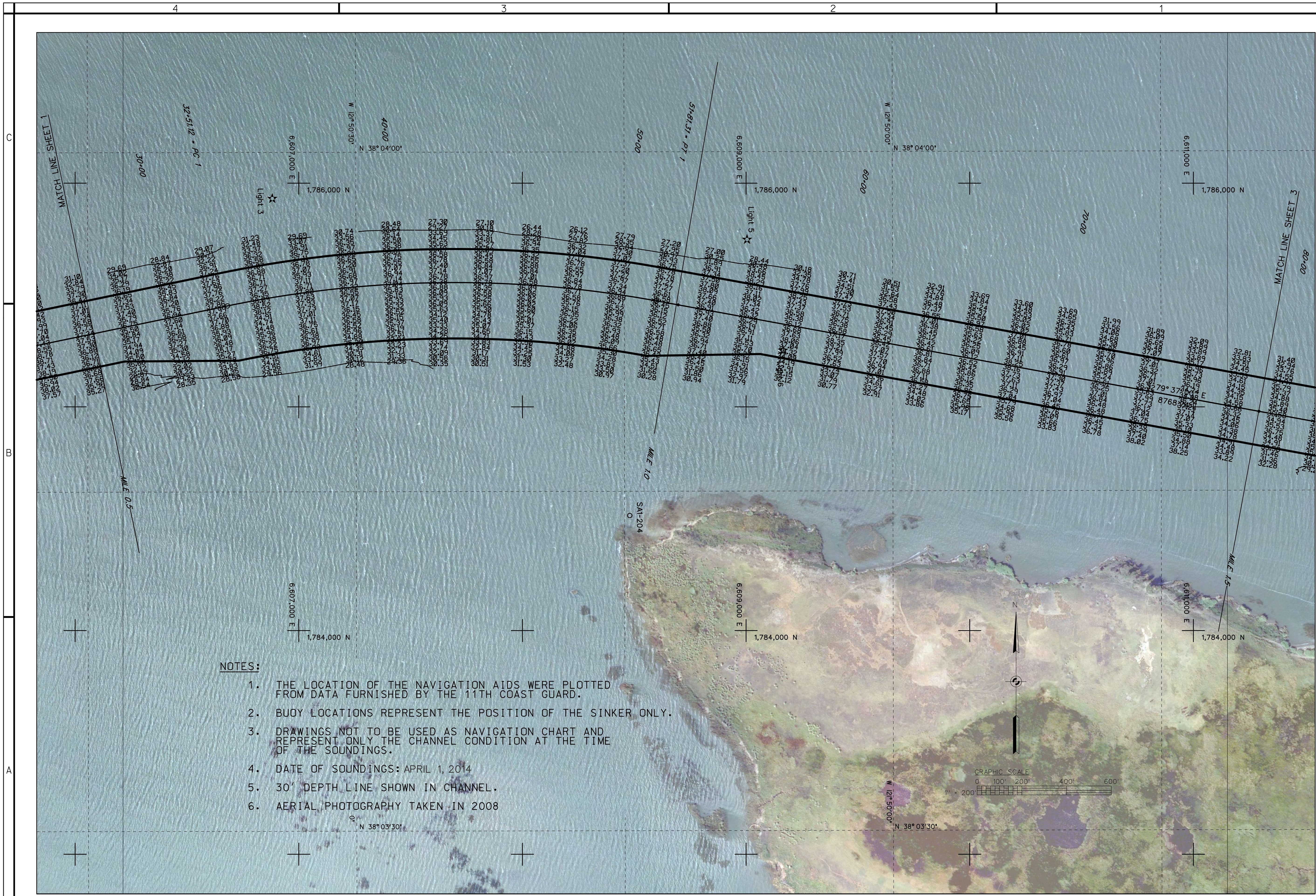
DEPARTMENT OF THE ARMY  
CORPS OF ENGINEERS  
SACRAMENTO, CALIFORNIA

SACRAMENTO DISTRICT  
IN-HOUSE DESIGN  
1325 J STREET  
SACRAMENTO, CA 95814-2922

CALIFORNIA  
SACRAMENTO COUNTY  
SACRAMENTO RIVER DEEP WATER  
SHIP CHANNEL

CONDITION SOUNDINGS  
CHANNEL MILE 0.0 TO MILE 0.5

Sheet  
reference  
number:  
**1**  
Sheet 1 of 45



**NOTES:**

1. THE LOCATION OF THE NAVIGATION AIDS WERE PLOTTED FROM DATA FURNISHED BY THE 11TH COAST GUARD.
2. BUOY LOCATIONS REPRESENT THE POSITION OF THE SINKER ONLY.
3. DRAWINGS NOT TO BE USED AS NAVIGATION CHART AND REPRESENT ONLY THE CHANNEL CONDITION AT THE TIME OF THE SOUNDINGS.
4. DATE OF SOUNDINGS: APRIL 1, 2014
5. 30' DEPTH LINE SHOWN IN CHANNEL.
6. AERIAL PHOTOGRAPHY TAKEN IN 2008

Date	Rev.	APPROVED	REV.#

DESIGNED BY: BRYAN HOLM	SPEC NO.: 1955	DATE: 02-06-2014	DESIGN FILE NO:
DRAWN BY: B. HOLM	REVIEWED BY: RICHARD A. TORBIK	DRAWING CODES: CONDITION SOUNDINGS	FILE NAME: 14-MAY-2014
SUBMITTED BY: RICHARD A. TORBIK		FILE NAME: 14-MAY-2014	PLOT SCALE:
CHIEF, CIVIL ENGINEERING SECTION			

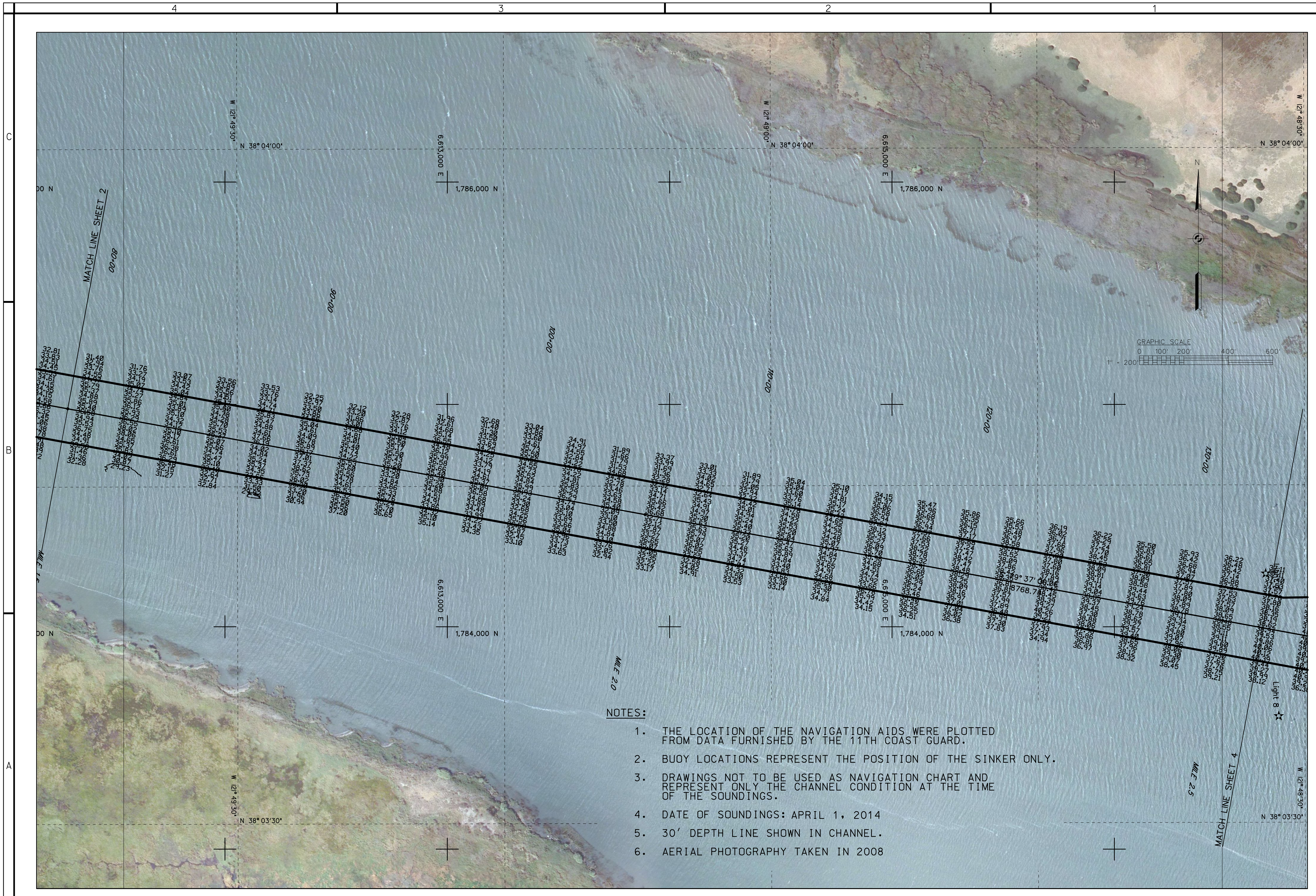
DEPARTMENT OF THE ARMY  
CORPS OF ENGINEERS  
SACRAMENTO, CALIFORNIA

SACRAMENTO DISTRICT  
IN-HOUSE DESIGN  
1325 J STREET  
SACRAMENTO, CA 95814-2922

CALIFORNIA  
SACRAMENTO RIVER DEEP WATER  
SHIP CHANNEL

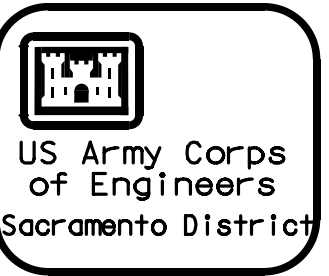
CONDITION SOUNDINGS  
CHANNEL MILE 0.5 TO MILE 1.5

Sheet  
reference  
number:  
**2**  
Sheet 2 of 45



**NOTES:**

1. THE LOCATION OF THE NAVIGATION AIDS WERE PLOTTED FROM DATA FURNISHED BY THE 11TH COAST GUARD.
2. BUOY LOCATIONS REPRESENT THE POSITION OF THE SINKER ONLY.
3. DRAWINGS NOT TO BE USED AS NAVIGATION CHART AND REPRESENT ONLY THE CHANNEL CONDITION AT THE TIME OF THE SOUNDINGS.
4. DATE OF SOUNDINGS: APRIL 1, 2014
5. 30' DEPTH LINE SHOWN IN CHANNEL.
6. AERIAL PHOTOGRAPHY TAKEN IN 2008



DATE	APPROVED	REV.#

DESIGNED BY: <b>BRYAN HOLM</b>	DATE: <b>52-06-0417</b>	REV.#: <b>1955</b>
DRAWN BY: <b>B. HOLM</b>	DESIGN FILE NO.:	DRAWING CODES:
REVIEWED BY: <b>RICHARD A. TORBIK</b>	FILE NAME: <b>CONDITION SOUNDINGS</b>	DATE: <b>14-MAY-2014</b>
SUBMITTED BY: <b>RICHARD A. TORBIK</b>		
TITLE: <b>CONDITION SOUNDINGS</b>		
PROJECT NO.:		
PROJECT NAME:		
PROJECT LOCATION:		
PROJECT SCALE:		

CALIFORNIA
SACRAMENTO COUNTY
SACRAMENTO RIVER DEEP WATER SHIP CHANNEL
CONDITION SOUNDINGS
CHANNEL MILE 1.5 TO MILE 2.5

Sheet reference number:  
**3**  
Sheet 3 of 45

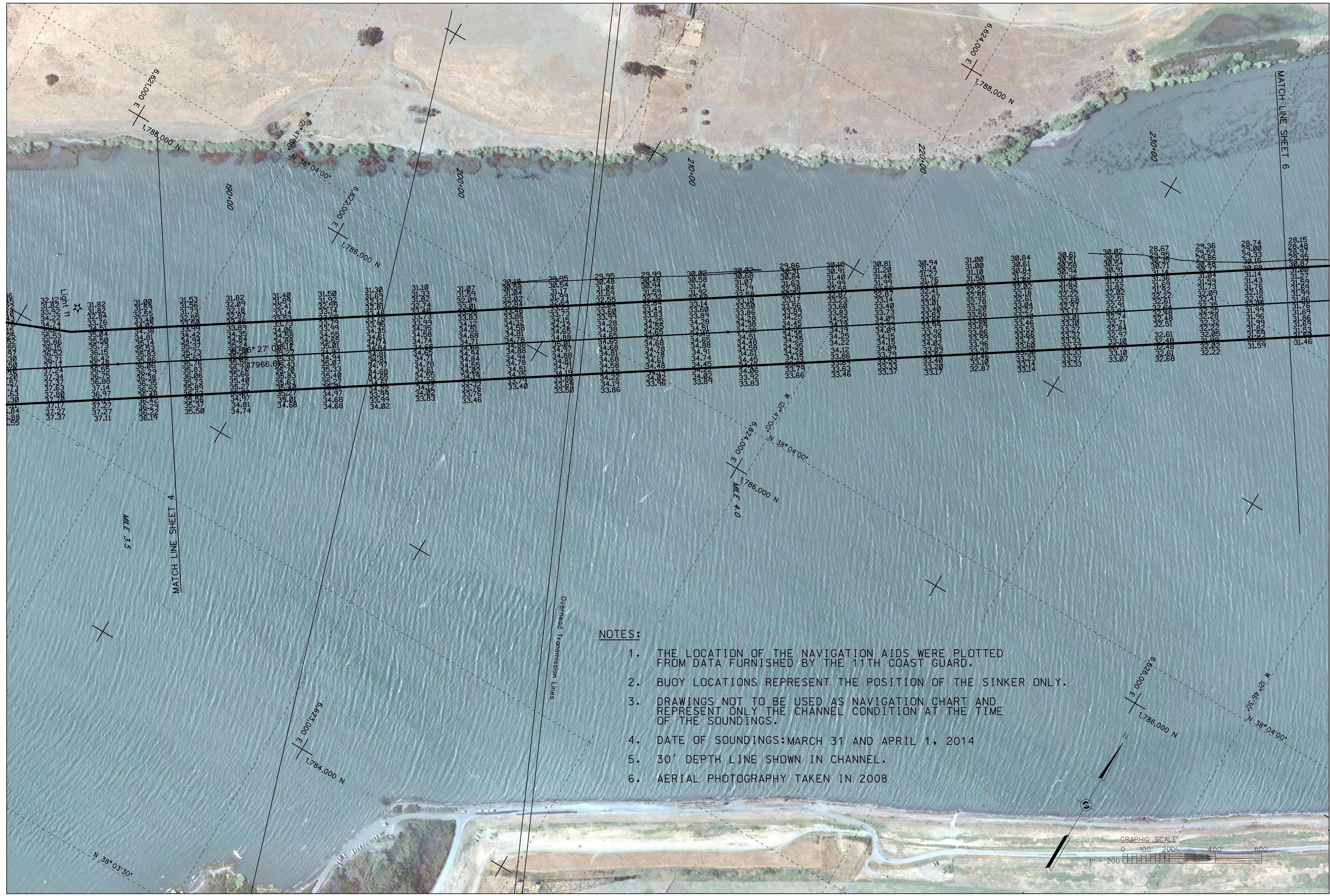


Date:	
Design File no:	
Drawing Code:	
File name:	
Plot date:	
Plot scale:	

Designed by:	BRYAN HOLM
Spec No.:	1955
Drawn by:	B. HOLM
Reviewed by:	RICHARD A. TORBIK
Submitted by:	RICHARD A. TORBIK
Chief:	CIVIL ENGINEER
DATE-APPROVED REV.#	
DESIGN FILE NO.	52-06-0417
DRAWING CODE	CONDITION SOUNDINGS
FILE NAME	FILE NAME: 14-MAY-2014
DATE	14-MAY-2014
SCALE	AS SHOWN

CALIFORNIA
SACRAMENTO COUNTY
SACRAMENTO RIVER DEEP WATER
SHIP CHANNEL
CONDITION SOUNDINGS
CHANNEL MILE 3.5 TO MILE 4.4

Sheet reference number:	5
Sheet 5 of 45	



**NOTES:**

1. THE LOCATION OF THE NAVIGATION AIDS WERE PLOTTED FROM DATA FURNISHED BY THE 11TH COAST GUARD.
2. BUOY LOCATIONS REPRESENT THE POSITION OF THE SINKER ONLY.
3. DRAWINGS NOT TO BE USED AS NAVIGATION CHART AND REPRESENT ONLY THE CHANNEL CONDITION AT THE TIME OF THE SOUNDINGS.
4. DATE OF SOUNDINGS: MARCH 31 AND APRIL 1, 2014
5. 30' DEPTH LINE SHOWN IN CHANNEL.
6. AERIAL PHOTOGRAPHY TAKEN IN 2008