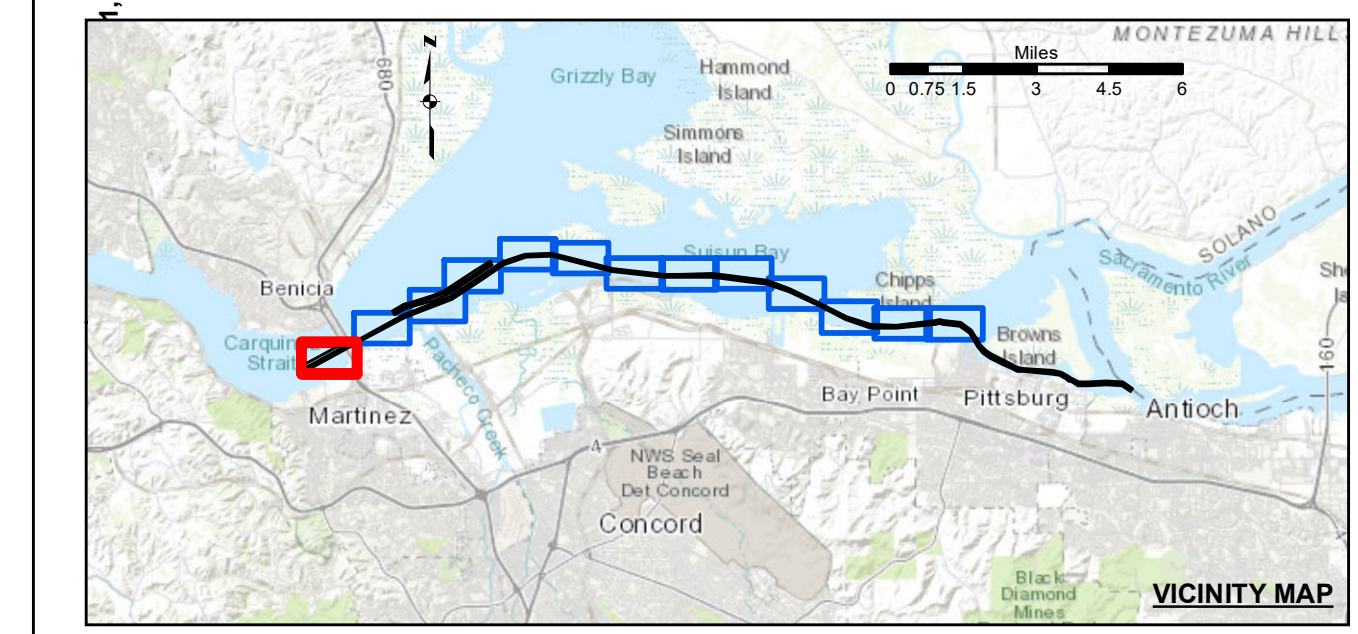
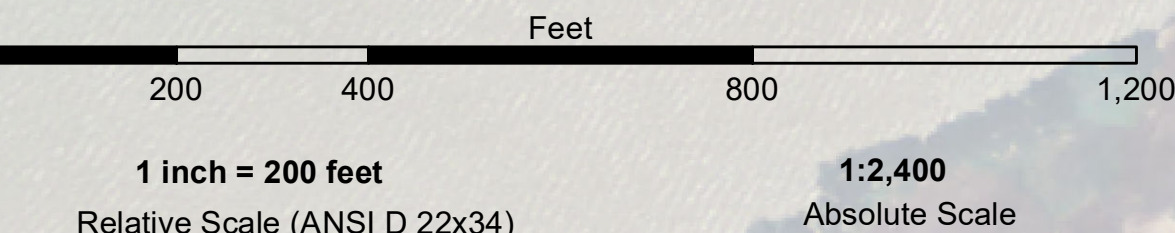


**PRELIMINARY ISSUE**  
THIS PLAN ISSUED FOR  
ADVANCE INFORMATION ONLY



- Federal Navigation Channel
  - Shoaling Area
  - Placement Area
  - Anchorage Area
  - Wreck Area
  - Submerged Wreck
  - Angle Point
  - Beacon, General
  - Obstruction Point
  - Navigation Buoy
  - Navigation Buoy
  - Shoalest Sounding\*
- Contours**
- 35
  - 34
  - 33
  - 32
  - 31

**NOTES:**

HORIZONTAL COORDINATE SYSTEM:  
NORTH AMERICAN DATUM OF 1983 (NAD83), PROJECTED TO THE STATE PLANE COORDINATE SYSTEM (SPCS), CALIFORNIA ZONE II. DISTANCE UNITS IN U.S. SURVEY FEET.

VERTICAL DATUM:  
SOUNDINGS ARE SHOWN IN FEET AND INDICATE DEPTHS BELOW MEAN LOWER LOW WATER.

THE INFORMATION DEPICTED ON THIS MAP REPRESENTS THE RESULTS OF A SURVEY CONDUCTED ON THE DATE INDICATED AND CAN ONLY BE CONSIDERED TO REPRESENT THE GENERAL CONDITION EXISTING AT THAT TIME.

PLANE GRID, BEARING AND COORDINATES ARE BASED ON THE STATE OF CALIFORNIA COORDINATE SYSTEM, LAMBERT CONFORMAL PROJECTION, ZONE II NAD 83, CALIFORNIA, AS DESCRIBED IN SPECIAL PUBLICATION NO. 235, PUBLISHED BY NATIONAL OCEAN SURVEY.

BASE MAPS ARE USDA NAMP 2010.

\*SHOALEST SOUNDING PER QUARTER PER REACH

DRAWING NOT TO BE USED FOR NAVIGATION, ONLY CHANNEL CONDITION AT DATE OF SURVEY.

THE LOCATION OF ALL NAVIGATION AIDS ARE BASED ON INFORMATION PROVIDED BY THE U.S. COAST GUARD. BUOY LOCATIONS REPRESENT THE POSITION OF THE SINKER ONLY.

SURVEYED BY THE CORPS OF ENGINEERS.

SOUNDINGS WERE TAKEN BY FATHOMETER AND ARE SHOWN TO THE NEAREST TENTH OF A FOOT. SOUNDINGS ARE BASED ON THE DATUM OF MEAN LOWER LOW WATER AT THE LOCALITY.

THE PROJECT DEPTH IS 35 FEET.

VERTICAL CONTROL:  
SUISUN BAY CHANNEL  
(LINES 00+00 TO 160+00) BENCHMARK "9" (1948), USC&GS DISK ELEV 14.875 FT MLLW,  
TIDE GAUGE LOCATED AT PORT OF BENICIA DOCK.

(LINES 150+00 TO 500+00) BENCHMARK "5144-P" (1990 RESET 1997),  
(LINES 500+00 TO 660+00) BENCHMARK "5144-P" (1990 RESET 1997),  
USC&GS DISK ELEV 11.83 FT MLLW,  
TIDE GAUGE LOCATED AT CONCORD NAVAL WEAPONS STATION TUG DOCK, NOAA STATION.

(LINES 660+00 TO 733+45) BENCHMARK "5096-B",  
USC&GS DISK ELEV 21.76 FT MLLW,  
TIDE GAUGE LOCATED AT DIABLO SERVICE DOCK.

HORIZONTAL GPS CONTROL: COAST GUARD D-BEACON



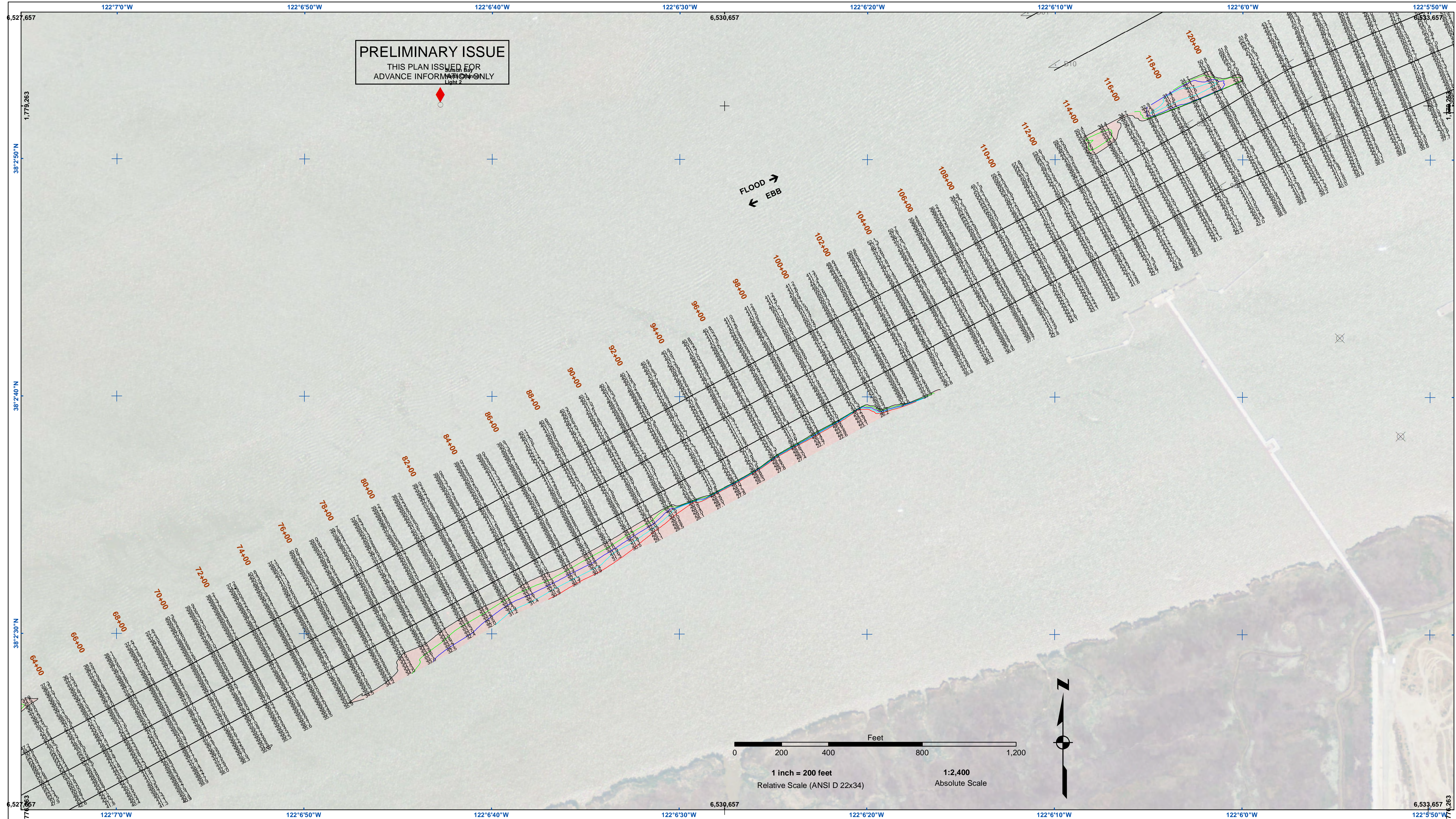
**DISCLAIMER**

The United States Government furnishes this information for your use only. It is not to be distributed, reproduced, or used for any purpose other than that for which it was prepared. The United States Government makes no warranty, expressed or implied, concerning the accuracy, completeness, or reliability of the information. The user is responsible for the results of any use of the information. The user is responsible for the results of any use of the information. The user is responsible for the results of any use of the information.

Prepared Under the Direction of	Chart Date:	Dec 01, 2021
KEVIN P. ARNETT	Surveyed By:	PDT
LT Colonel, C.E., District Engineer	Plotted By:	PDT
Subject: Hydro Survey Team Leader	Checked By:	PDT
Recommended: Chief, Hydro Survey Section	Drawn by:	PDT
Approved: Chief, Construction Branch		

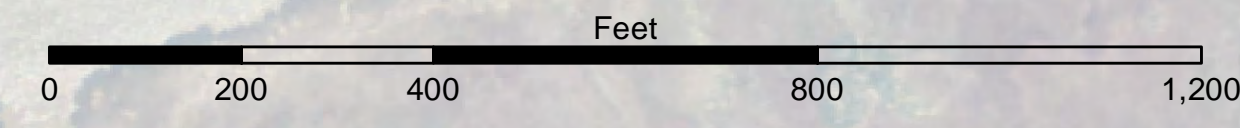
CALIFORNIA  
CONTRA COSTA COUNTY  
SUISUN BAY CHANNEL  
POST-DREDGE SURVEY  
29 NOVEMBER 2021

**Sheet Reference Number**  
1 of 13

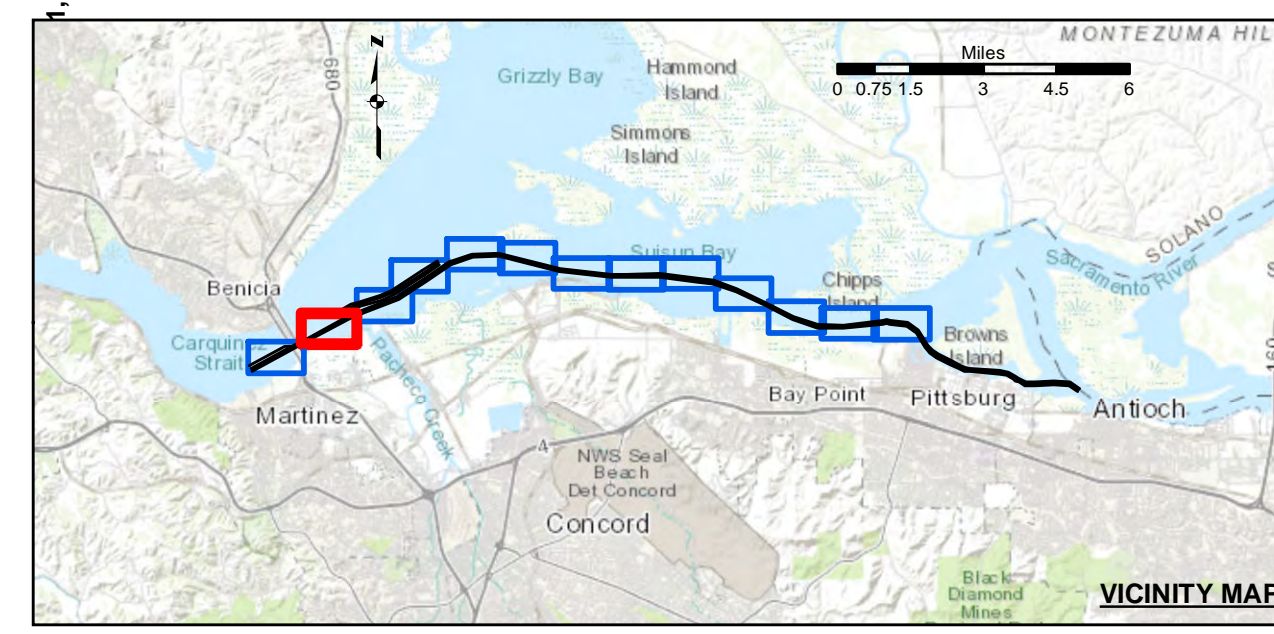
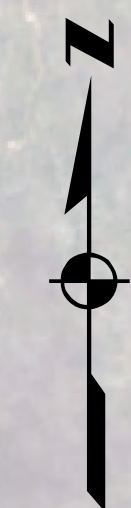


**PRELIMINARY ISSUE**  
THIS PLAN ISSUED FOR  
ADVANCE INFORMATION ONLY

FLOOD →  
← EBB



1 inch = 200 feet  
Relative Scale (ANSI D 22x34)  
1:2,400  
Absolute Scale



- |  |                            |  |                    |                 |     |
|--|----------------------------|--|--------------------|-----------------|-----|
|  | Federal Navigation Channel |  | Beacon, General    | <b>Contours</b> |     |
|  | Shoaling Area              |  | Obstruction Point  |                 |     |
|  | Placement Area             |  | Navigation Buoy    |                 |     |
|  | Anchorage Area             |  | Navigation Buoy    |                 |     |
|  | Wreck Area                 |  | Shoalest Sounding* |                 |     |
|  | Submerged Wreck            |  |                    |                 | -35 |
|  | Angle Point                |  |                    |                 | -34 |
|  |                            |  |                    |                 | -33 |
|  |                            |  |                    |                 | -32 |
|  |                            |  |                    |                 | -31 |

NOTES:  
HORIZONTAL COORDINATE SYSTEM:  
NORTH AMERICAN DATUM OF 1983 (NAD83), PROJECTED TO THE STATE PLANE COORDINATE SYSTEM (SPCS), CALIFORNIA ZONE II. DISTANCE UNITS IN U.S. SURVEY FEET.  
VERTICAL DATUM:  
SOUNDINGS ARE SHOWN IN FEET AND INDICATE DEPTHS BELOW MEAN LOWER LOW WATER.  
THE INFORMATION DEPICTED ON THIS MAP REPRESENTS THE RESULTS OF A SURVEY CONDUCTED ON THE DATE INDICATED AND CAN ONLY BE CONSIDERED TO REPRESENT THE GENERAL CONDITION EXISTING AT THAT TIME.  
PLANE GRID, BEARING AND COORDINATES ARE BASED ON THE STATE OF CALIFORNIA COORDINATE SYSTEM, LAMBERT CONFORMAL PROJECTION, ZONE II NAD 83, CALIFORNIA, AS DESCRIBED IN SPECIAL PUBLICATION NO. 235, PUBLISHED BY NATIONAL OCEAN SURVEY, BASE MAPS ARE USDA NNP 2010.  
\*SHOALEST SOUNDING PER QUARTER PER REACH  
DRAWING NOT TO BE USED FOR NAVIGATION, ONLY CHANNEL CONDITION AT DATE OF SURVEY.  
THE LOCATION OF ALL NAVIGATION AIDS ARE BASED ON INFORMATION PROVIDED BY THE U.S. COAST GUARD. BUOY LOCATIONS REPRESENT THE POSITION OF THE SINKER ONLY.

SURVEYED BY THE CORPS OF ENGINEERS.  
SOUNDINGS WERE TAKEN BY FATHOMETER AND ARE SHOWN TO THE NEAREST TENTH OF A FOOT. SOUNDINGS ARE BASED ON THE DATUM OF MEAN LOWER LOW WATER AT THE LOCALITY.  
THE PROJECT DEPTH IS 35 FEET.  
VERTICAL CONTROL:  
SUISUN BAY CHANNEL  
(LINES 00+00 TO 160+00) BENCHMARK "9" (1948), USC&GS DISK ELEV 14.875 FT MLLW, TIDE GAUGE LOCATED AT PORT OF BENICIA DOCK.  
(LINES 150+00 TO 500+00) BENCHMARK "5144-P" (1990 RESET 1997), USC&GS DISK ELEV 11.83 FT MLLW, TIDE GAUGE LOCATED AT CONCORD NAVAL WEAPONS STATION TUG DOCK, NOAA STATION.  
(LINES 660+00 TO 733+45) BENCHMARK "5096-B", USC&GS DISK ELEV 21.76 FT MLLW, TIDE GAUGE LOCATED AT DIABLO SERVICE DOCK.  
HORIZONTAL GPS CONTROL: COAST GUARD D-BEACON

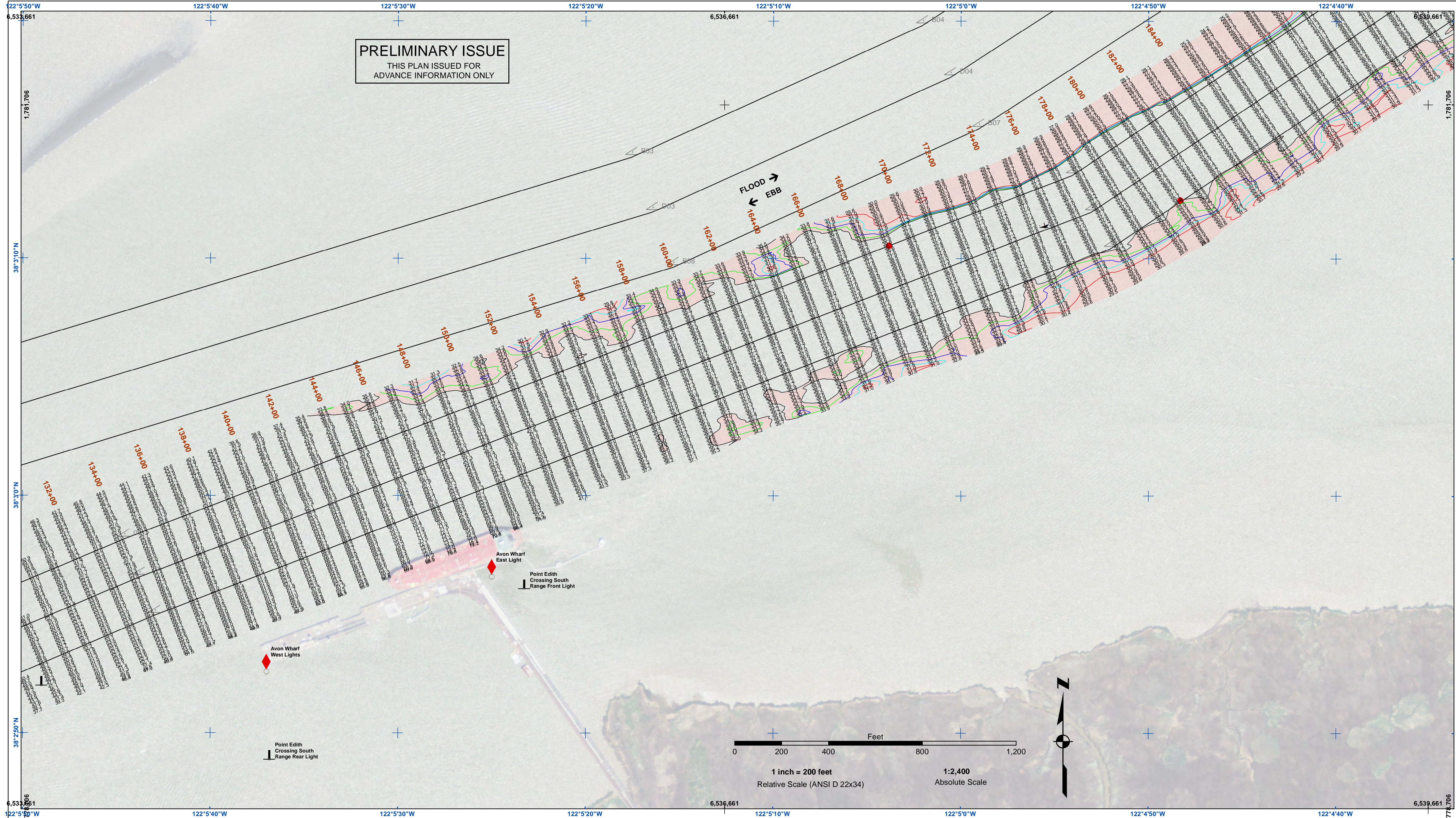
**US Army Corps of Engineers**  
San Francisco District  
450 Golden Gate Ave  
San Francisco, CA 94102

**DISCLAIMER**  
The United States Government furnishes this information as a public service. It is not intended to be used for any purpose other than the intended purpose. The user is responsible for the results of any application of the data for other than the intended purpose. The user is responsible for the results of any application of the data for other than the intended purpose. The user is responsible for the results of any application of the data for other than the intended purpose.

Chart Date:	Dec 01, 2021
Designed by:	PDT
Plotted by:	PDT
Checked by:	PDT
Drawn by:	PDT

CALIFORNIA  
CONTRA COSTA COUNTY  
**SUISUN BAY CHANNEL**  
POST-DREDGE SURVEY  
29 NOVEMBER 2021

**Sheet Reference Number**  
2 of 13



**PRELIMINARY ISSUE**  
THIS PLAN ISSUED FOR  
ADVANCE INFORMATION ONLY

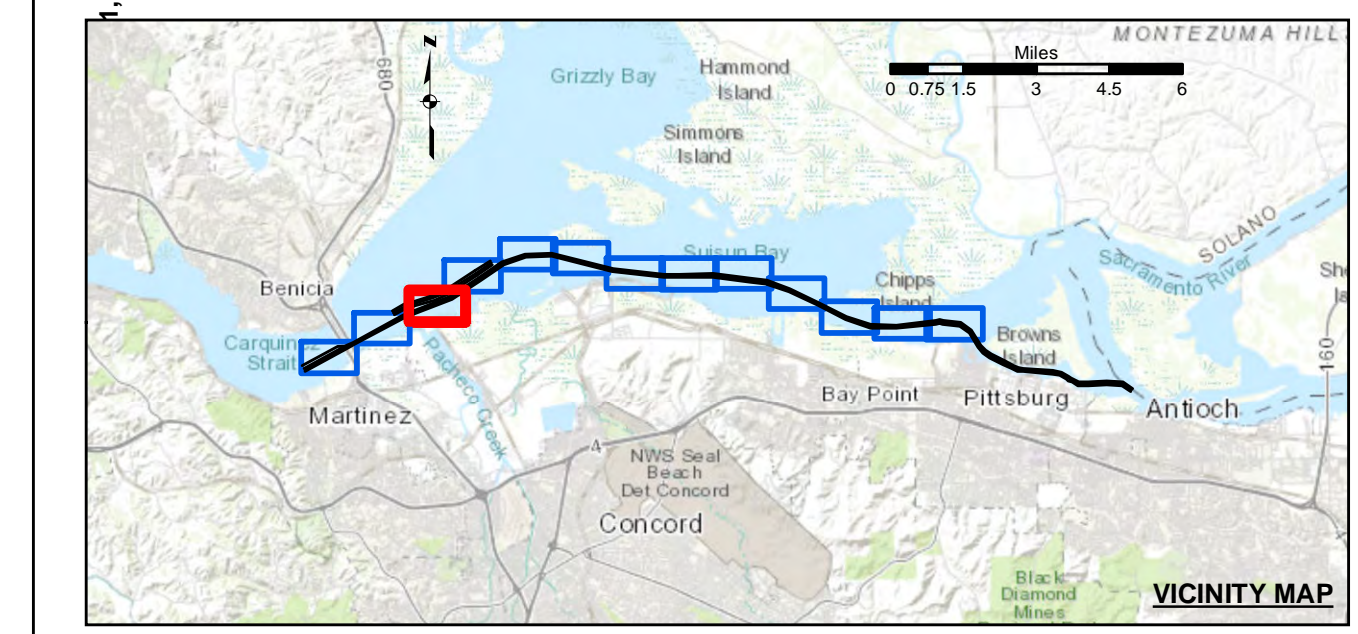
**US Army Corps of Engineers**  
San Francisco District  
450 Golden Gate Ave  
San Francisco, CA 94102

**DISCLAIMER**  
The United States Government furnishes this information as a service to the public. It is not intended to be used for any purpose other than the intended purpose. The user is responsible for the results of any application of the data for other than the intended purpose. The United States Government makes no warranty, expressed or implied, concerning the accuracy, completeness, or timeliness of the information. The United States Government is not liable for any damage or loss, including consequential damages, arising from the use of this information. These data belong to the Government. Therefore, the recipient may not transfer these data to others without also transferring this disclaimer.

Chart Date:	Dec 01, 2021
Designed by:	PDT
Drawn by:	PDT
Surveyed By:	PDT
Plotted By:	PDT
Checked By:	PDT
Approved:	Chief, Construction Branch

CALIFORNIA  
CONTRA COSTA COUNTY  
**SUISUN BAY CHANNEL**  
POST-DREDGE SURVEY  
29 NOVEMBER 2021

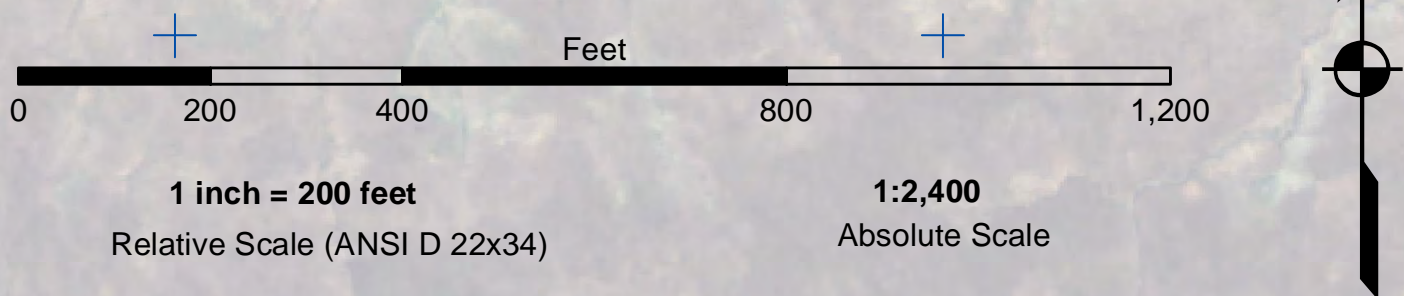
**Sheet Reference Number**  
3 of 13

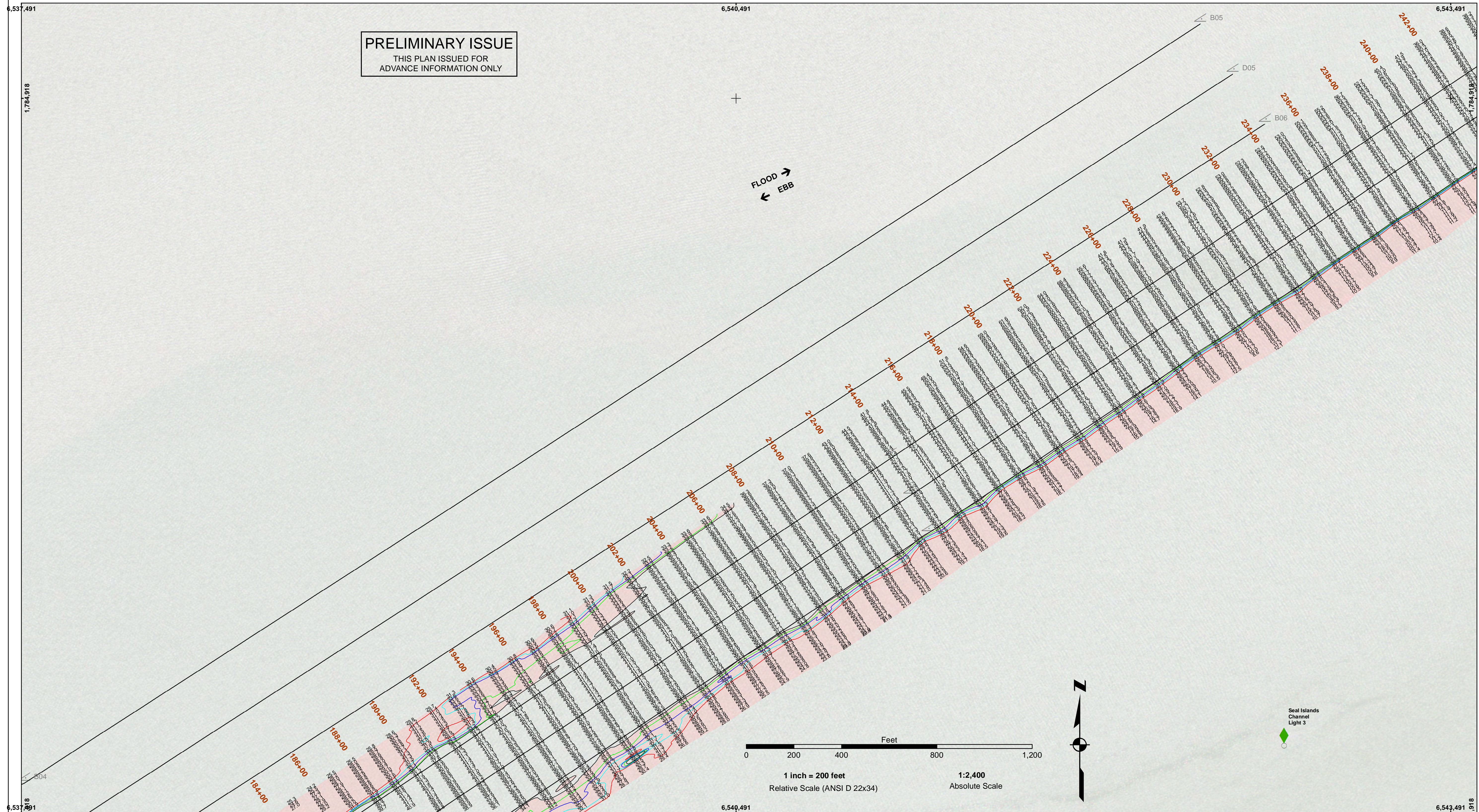


Federal Navigation Channel	Beacon, General	<b>Contours</b>
Shoaling Area	Obstruction Point	
Placement Area	Navigation Buoy	
Anchorage Area	Navigation Buoy	
Wreck Area	Shoalest Sounding*	
Submerged Wreck		-35
Angle Point		-34
		-33
		-32
		-31

**NOTES:**  
HORIZONTAL COORDINATE SYSTEM: NORTH AMERICAN DATUM OF 1983 (NAD83), PROJECTED TO THE STATE PLANE COORDINATE SYSTEM (SPCS), CALIFORNIA ZONE II. DISTANCE UNITS IN U.S. SURVEY FEET.  
VERTICAL DATUM: SOUNDINGS ARE SHOWN IN FEET AND INDICATE DEPTHS BELOW MEAN LOWER LOW WATER.  
THE INFORMATION DEPICTED ON THIS MAP REPRESENTS THE RESULTS OF A SURVEY CONDUCTED ON THE DATE INDICATED AND CAN ONLY BE CONSIDERED TO REPRESENT THE GENERAL CONDITION EXISTING AT THAT TIME.  
PLANE GRID, BEARING AND COORDINATES ARE BASED ON THE STATE OF CALIFORNIA COORDINATE SYSTEM, LAMBERT CONFORMAL PROJECTION, ZONE II NAD 83, CALIFORNIA, AS DESCRIBED IN SPECIAL PUBLICATION NO. 235, PUBLISHED BY NATIONAL OCEAN SURVEY. BASE MAPS ARE USDA NAMP 2010.  
\*SHOALEST SOUNDING PER QUARTER PER REACH  
DRAWING NOT TO BE USED FOR NAVIGATION, ONLY CHANNEL CONDITION AT DATE OF SURVEY. THE LOCATION OF ALL NAVIGATION AIDS ARE BASED ON INFORMATION PROVIDED BY THE U.S. COAST GUARD. BUOY LOCATIONS REPRESENT THE POSITION OF THE SINKER ONLY.

SURVEYED BY THE CORPS OF ENGINEERS.  
SOUNDINGS WERE TAKEN BY FATHOMETER AND ARE SHOWN TO THE NEAREST TENTH OF A FOOT. SOUNDINGS ARE BASED ON THE DATUM OF MEAN LOWER LOW WATER AT THE LOCALITY.  
THE PROJECT DEPTH IS 35 FEET.  
VERTICAL CONTROL: SUISUN BAY CHANNEL (LINES 00+00 TO 160+00) BENCHMARK "9" (1948), USC&GS DISK ELEV 14.875 FT MLLW, TIDE GAUGE LOCATED AT PORT OF BENICIA DOCK. (LINES 150+00 TO 500+00) BENCHMARK "5144-P" (1990 RESET 1997), USC&GS DISK ELEV 11.83 FT MLLW, TIDE GAUGE LOCATED AT CONCORD NAVAL WEAPONS STATION TUG DOCK, NOAA STATION. (LINES 660+00 TO 733+45) BENCHMARK "5096-B", USC&GS DISK ELEV 21.76 FT MLLW, TIDE GAUGE LOCATED AT DIABLO SERVICE DOCK.  
HORIZONTAL GPS CONTROL: COAST GUARD D-BEACON





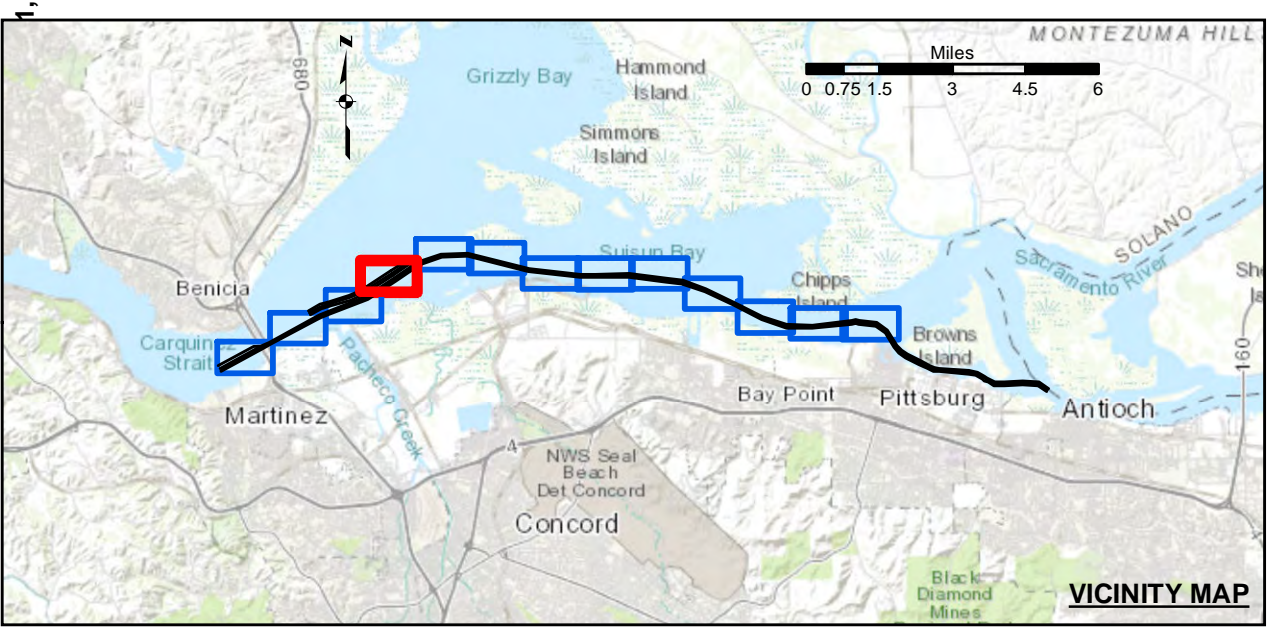
**PRELIMINARY ISSUE**  
THIS PLAN ISSUED FOR  
ADVANCE INFORMATION ONLY

**US Army Corps of Engineers**  
San Francisco District  
450 Golden Gate Ave  
San Francisco, CA 94102

**DISCLAIMER**  
The United States Government furnishes this information as a service to the public. It is not intended to be used for any purpose other than the intended purpose. The user assumes all liability for any use of this information. The United States Government makes no warranty, expressed or implied, concerning the accuracy, completeness, or timeliness of the information. The user is responsible for the results of any use of this information. The user is responsible for the results of any use of this information. The user is responsible for the results of any use of this information. The user is responsible for the results of any use of this information.

Chart Date:	Dec 01, 2021
Designed by:	PDT
Drawn by:	PDT
Checked by:	PDT
Approved:	Chief, Construction Branch
Surveyed By:	LT COLONEL C.E. DISTRICT ENGINEER
Plotted By:	PDT
Checked By:	PDT

CALIFORNIA  
CONTRA COSTA COUNTY  
**SUISUN BAY CHANNEL**  
POST-DREDGE SURVEY  
29 NOVEMBER 2021

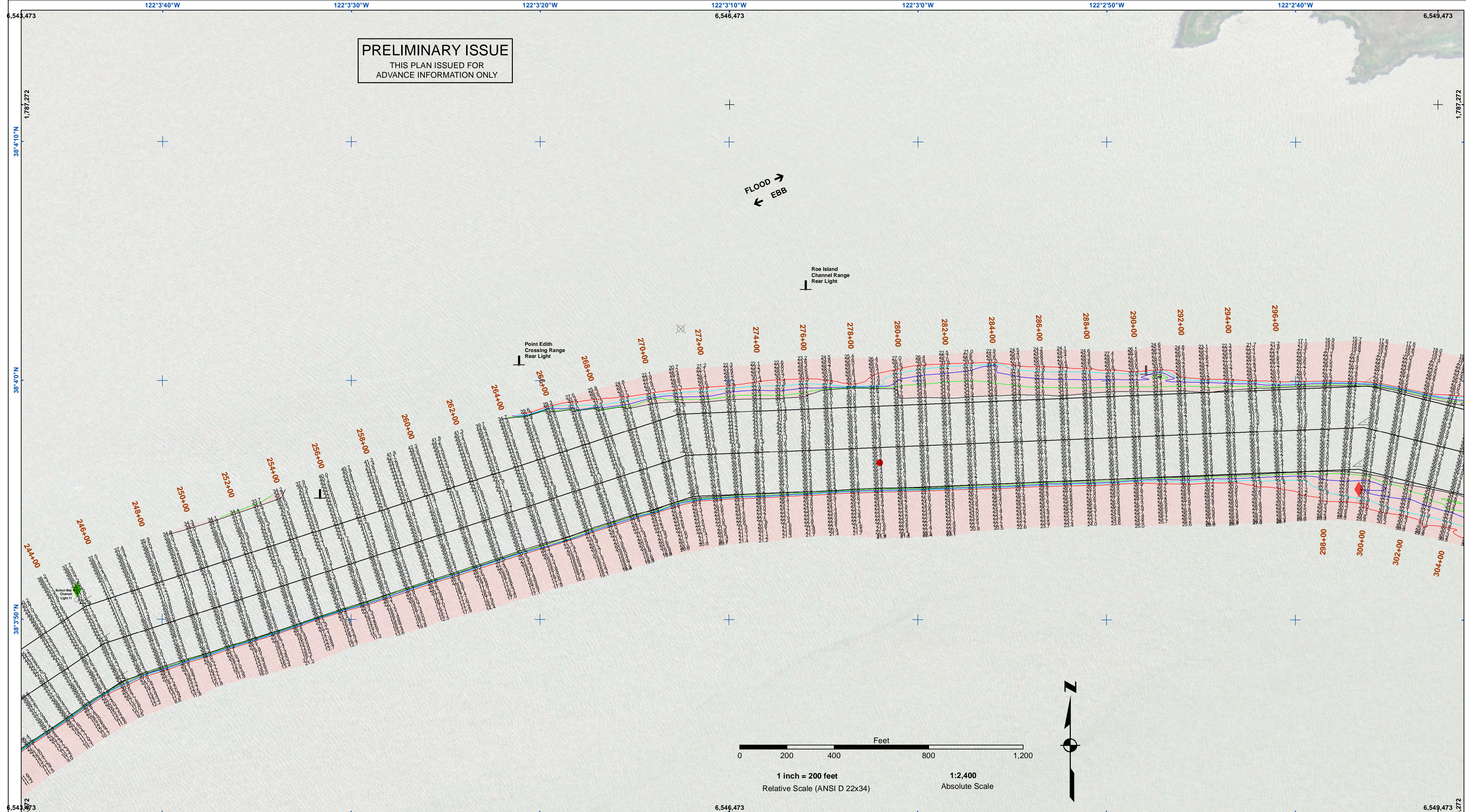


Federal Navigation Channel	Beacon, General	<b>Contours</b>
Shoaling Area	Obstruction Point	
Placement Area	Navigation Buoy	
Anchorage Area	Navigation Buoy	
Wreck Area	Shoalest Sounding*	
Submerged Wreck		-35
Angle Point		-34
		-33
		-32
		-31

**NOTES:**  
HORIZONTAL COORDINATE SYSTEM: NORTH AMERICAN DATUM OF 1983 (NAD83), PROJECTED TO THE STATE PLANE COORDINATE SYSTEM (SPCS), CALIFORNIA ZONE II. DISTANCE UNITS IN U.S. SURVEY FEET.  
VERTICAL DATUM: SOUNDINGS ARE SHOWN IN FEET AND INDICATE DEPTHS BELOW MEAN LOWER LOW WATER.  
THE INFORMATION DEPICTED ON THIS MAP REPRESENTS THE RESULTS OF A SURVEY CONDUCTED ON THE DATE INDICATED AND CAN ONLY BE CONSIDERED TO REPRESENT THE GENERAL CONDITION EXISTING AT THAT TIME.  
PLANE GRID, BEARING AND COORDINATES ARE BASED ON THE STATE OF CALIFORNIA COORDINATE SYSTEM, LAMBERT CONFORMAL PROJECTION, ZONE II NAD 83, CALIFORNIA, AS DESCRIBED IN SPECIAL PUBLICATION NO. 235, PUBLISHED BY NATIONAL OCEAN SURVEY, BASE MAPS ARE USDA NAMP 2010.  
\*SHOALEST SOUNDING PER QUARTER PER REACH  
DRAWING NOT TO BE USED FOR NAVIGATION, ONLY CHANNEL CONDITION AT DATE OF SURVEY.  
THE LOCATION OF ALL NAVIGATION AIDS ARE BASED ON INFORMATION PROVIDED BY THE U.S. COAST GUARD. BUOY LOCATIONS REPRESENT THE POSITION OF THE SINKER ONLY.

SURVEYED BY THE CORPS OF ENGINEERS.  
SOUNDINGS WERE TAKEN BY FATHOMETER AND ARE SHOWN TO THE NEAREST TENTH OF A FOOT. SOUNDINGS ARE BASED ON THE DATUM OF MEAN LOWER LOW WATER AT THE LOCALITY.  
THE PROJECT DEPTH IS 35 FEET.  
VERTICAL CONTROL: SUISUN BAY CHANNEL (LINES 00+00 TO 160+00) BENCHMARK "9" (1948), USC&GS DISK ELEV 14.875 FT MLLW, TIDE GAUGE LOCATED AT PORT OF BENICIA DOCK.  
(LINES 150+00 TO 500+00) BENCHMARK "5144-P" (1990 RESET 1997), USC&GS DISK ELEV 11.83 FT MLLW, TIDE GAUGE LOCATED AT CONCORD NAVAL WEAPONS STATION TUG DOCK, NOAA STATION.  
(LINES 660+00 TO 733+45) BENCHMARK "5096-B", USC&GS DISK ELEV 21.76 FT MLLW, TIDE GAUGE LOCATED AT DIABLO SERVICE DOCK.  
HORIZONTAL GPS CONTROL: COAST GUARD D-BEACON

**Sheet Reference Number**  
4 of 13

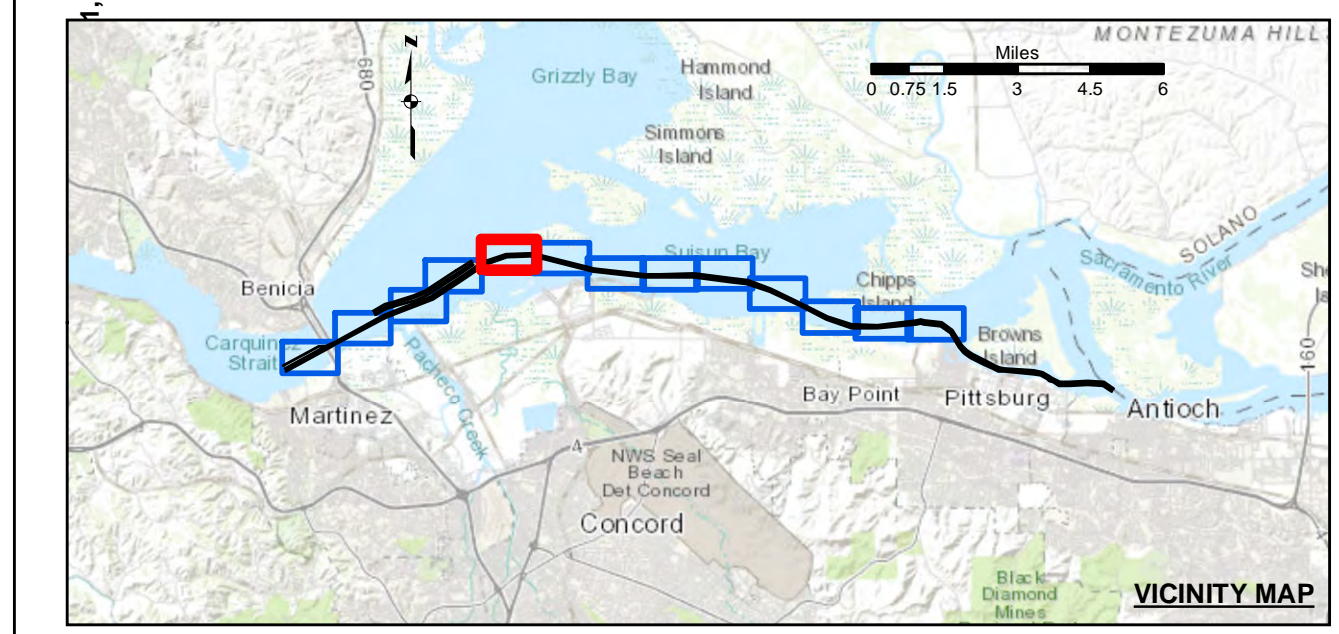
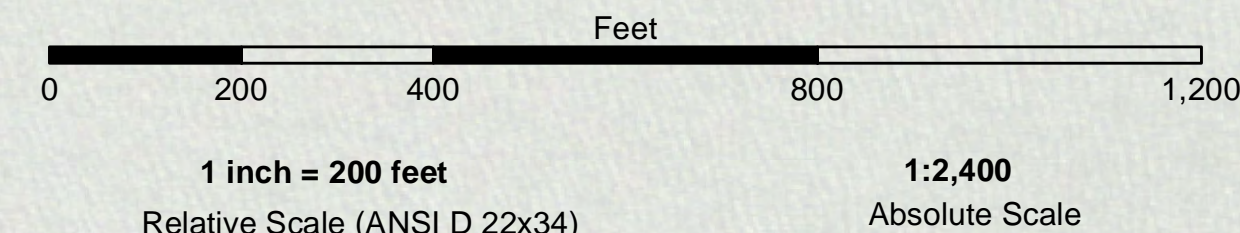


**PRELIMINARY ISSUE**  
THIS PLAN ISSUED FOR  
ADVANCE INFORMATION ONLY

FLOOD →  
← EBB

Roe Island  
Channel Range  
Rear Light

Point Edith  
Crossing Range  
Rear Light



- |  |                            |  |                    |                 |     |
|--|----------------------------|--|--------------------|-----------------|-----|
|  | Federal Navigation Channel |  | Beacon, General    | <b>Contours</b> |     |
|  | Shoaling Area              |  | Obstruction Point  |                 |     |
|  | Placement Area             |  | Navigation Buoy    |                 |     |
|  | Anchorage Area             |  | Navigation Buoy    |                 |     |
|  | Wreck Area                 |  | Shoalest Sounding* |                 |     |
|  | Submerged Wreck            |  |                    |                 | -35 |
|  | Angle Point                |  |                    |                 | -34 |
|  |                            |  |                    |                 | -33 |
|  |                            |  |                    |                 | -32 |
|  |                            |  |                    |                 | -31 |

NOTES:  
HORIZONTAL COORDINATE SYSTEM:  
NORTH AMERICAN DATUM OF 1983 (NAD83), PROJECTED TO THE STATE PLANE COORDINATE SYSTEM (SPCS), CALIFORNIA ZONE II. DISTANCE UNITS IN U.S. SURVEY FEET.  
VERTICAL DATUM:  
SOUNDINGS ARE SHOWN IN FEET AND INDICATE DEPTHS BELOW MEAN LOWER LOW WATER.  
THE INFORMATION DEPICTED ON THIS MAP REPRESENTS THE RESULTS OF A SURVEY CONDUCTED ON THE DATE INDICATED AND CAN ONLY BE CONSIDERED TO REPRESENT THE GENERAL CONDITION EXISTING AT THAT TIME.  
PLANE GRID, BEARING AND COORDINATES ARE BASED ON THE STATE OF CALIFORNIA COORDINATE SYSTEM, LAMBERT CONFORMAL PROJECTION, ZONE II NAD 83, CALIFORNIA, AS DESCRIBED IN SPECIAL PUBLICATION NO. 235, PUBLISHED BY NATIONAL OCEAN SURVEY, BASE MAPS ARE USDA NAMP 2010.  
\*SHOALEST SOUNDING PER QUARTER PER REACH  
DRAWING NOT TO BE USED FOR NAVIGATION, ONLY CHANNEL CONDITION AT DATE OF SURVEY.  
THE LOCATION OF ALL NAVIGATION AIDS ARE BASED ON INFORMATION PROVIDED BY THE U.S. COAST GUARD. BUOY LOCATIONS REPRESENT THE POSITION OF THE SINKER ONLY.

SURVEYED BY THE CORPS OF ENGINEERS.  
SOUNDINGS WERE TAKEN BY FATHOMETER AND ARE SHOWN TO THE NEAREST TENTH OF A FOOT. SOUNDINGS ARE BASED ON THE DATUM OF MEAN LOWER LOW WATER AT THE LOCALITY.  
THE PROJECT DEPTH IS 35 FEET.  
VERTICAL CONTROL:  
SUISUN BAY CHANNEL  
(LINES 00+00 TO 160+00) BENCHMARK "9" (1948), USC&GS DISK ELEV 14.875 FT MLLW, TIDE GAUGE LOCATED AT PORT OF BENICIA DOCK.  
(LINES 150+00 TO 500+00) BENCHMARK "5144-P" (1990 RESET 1997), USC&GS DISK, ELEV 11.83 FT MLLW, TIDE GAUGE LOCATED AT CONCORD NAVAL WEAPONS STATION TUG DOCK, NOAA STATION.  
(LINES 660+00 TO 733+45) BENCHMARK "5096-B", USC&GS DISK, ELEV 21.76 FT MLLW, TIDE GAUGE LOCATED AT DIABLO SERVICE DOCK.  
HORIZONTAL GPS CONTROL: COAST GUARD D-BEACON

**US Army Corps of Engineers**  
San Francisco District  
450 Golden Gate Ave  
San Francisco, CA 94102

**DISCLAIMER**  
The United States Government furnishes no warranty, expressed or implied, concerning the accuracy, completeness, or reliability of the data furnished. The United States Government makes no liability whatsoever to any person by reason of any use made thereof. These data belong to the Government. Therefore the recipient may not transfer these data to others without also transferring this disclaimer.

Prepared Under the Direction of <b>KEVIN P. ARNETT</b> LT Colonel, C.E., District Engineer	Chart Date: Dec 01, 2021
Submitted: Hydro Survey Team Leader	Designed by: PDT
Recommended: Chief, Hydro Survey Section	Plotted by: PDT
Approved: Chief, Construction Branch	Checked by: PDT
	Drawn by: PDT

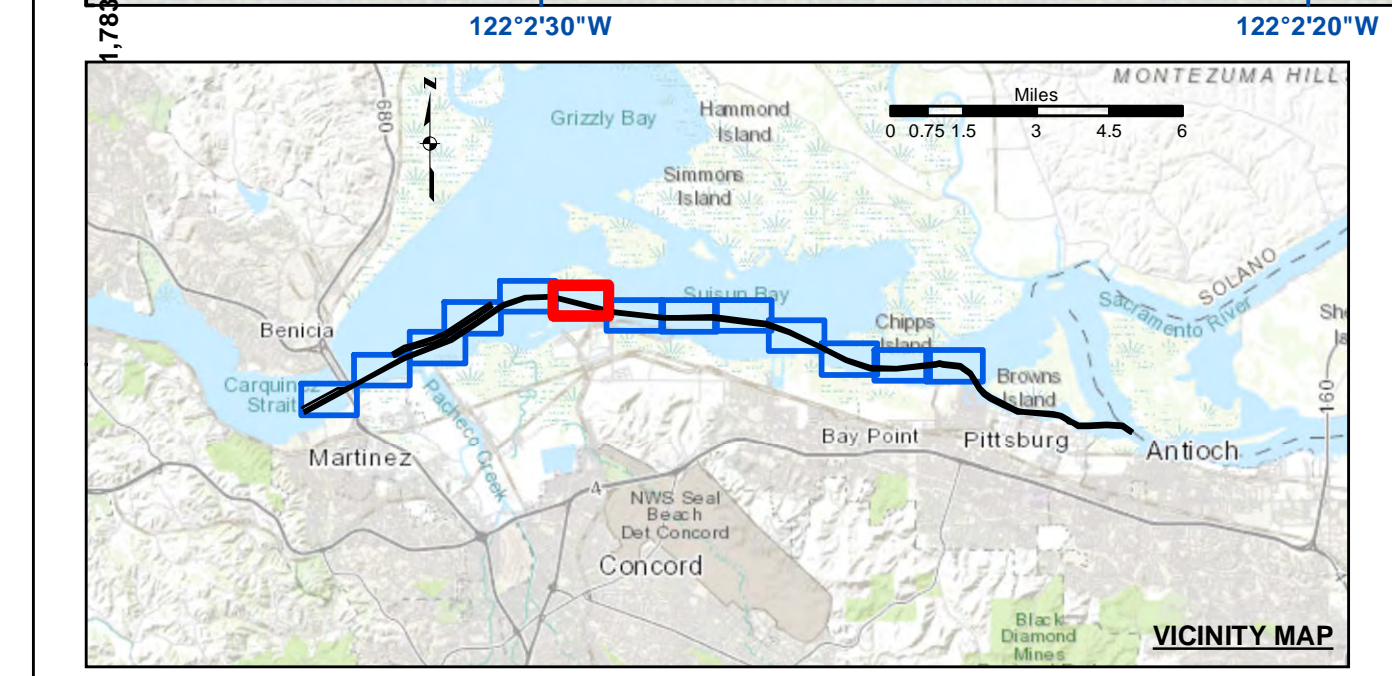
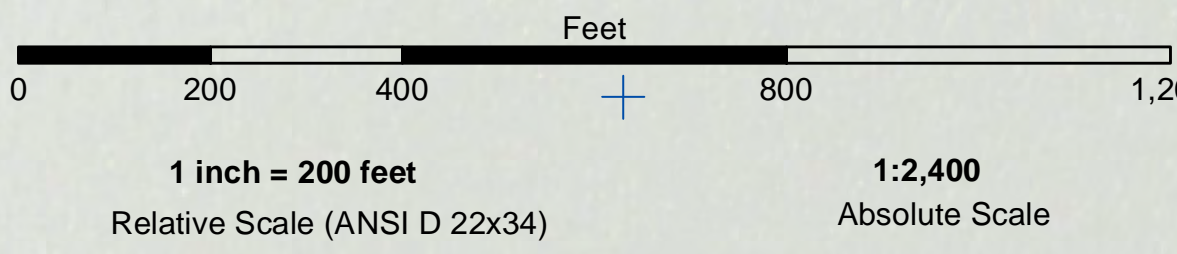
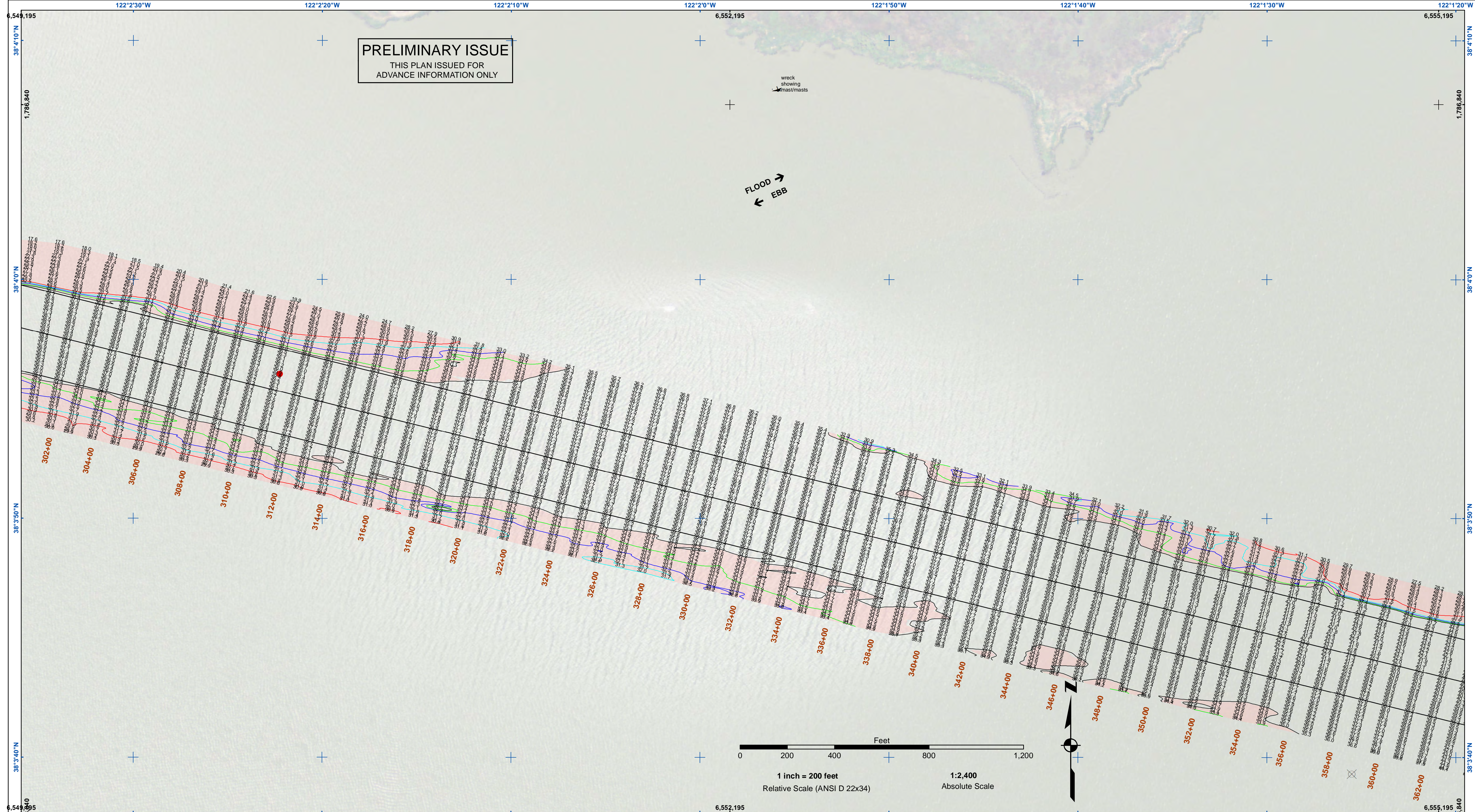
CALIFORNIA  
**SUISUN BAY CHANNEL**  
POST-DREDGE SURVEY  
29 NOVEMBER 2021

**Sheet Reference Number**  
5 of 13

**PRELIMINARY ISSUE**  
THIS PLAN ISSUED FOR  
ADVANCE INFORMATION ONLY

**US Army Corps of Engineers**  
San Francisco District  
450 Golden Gate Ave  
San Francisco, CA 94102

**DISCLAIMER**  
The United States Government furnishes this information as a service to the public and does not warrant, express or implied, the accuracy, completeness, or reliability of the information. The user is responsible for the results of any use of the information. The user is responsible for the results of any use of the information. The user is responsible for the results of any use of the information. The user is responsible for the results of any use of the information.



Federal Navigation Channel	Beacon, General	<b>Contours</b>
Shoaling Area	Obstruction Point	-35
Placement Area	Navigation Buoy	-34
Anchorage Area	Navigation Buoy	-33
Wreck Area	Shoalest Sounding*	-32
Submerged Wreck		-31
Angle Point		

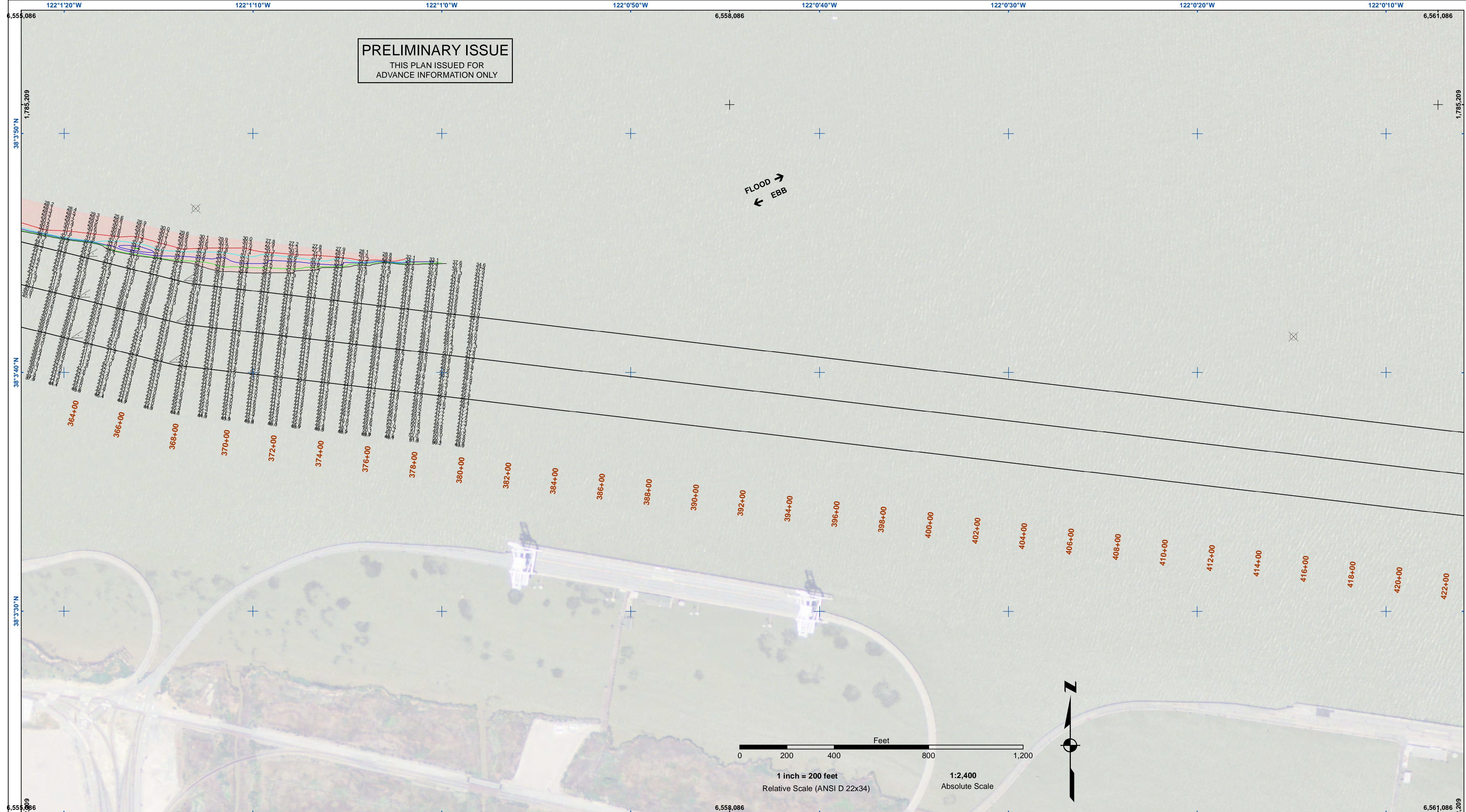
**NOTES:**  
HORIZONTAL COORDINATE SYSTEM: NORTH AMERICAN DATUM OF 1983 (NAD83), PROJECTED TO THE STATE PLANE COORDINATE SYSTEM (SPCS), CALIFORNIA ZONE II. DISTANCE UNITS IN U.S. SURVEY FEET.  
VERTICAL DATUM: SOUNDINGS ARE SHOWN IN FEET AND INDICATE DEPTHS BELOW MEAN LOWER LOW WATER.  
THE INFORMATION DEPICTED ON THIS MAP REPRESENTS THE RESULTS OF A SURVEY CONDUCTED ON THE DATE INDICATED AND CAN ONLY BE CONSIDERED TO REPRESENT THE GENERAL CONDITION EXISTING AT THAT TIME.  
PLANE GRID, BEARING AND COORDINATES ARE BASED ON THE STATE OF CALIFORNIA COORDINATE SYSTEM, LAMBERT CONFORMAL PROJECTION, ZONE II NAD 83, CALIFORNIA, AS DESCRIBED IN SPECIAL PUBLICATION NO. 235, PUBLISHED BY NATIONAL OCEAN SURVEY, BASE MAPS ARE USDA NAD 2010.  
\*SHOALEST SOUNDING PER QUARTER PER REACH  
DRAWING NOT TO BE USED FOR NAVIGATION, ONLY CHANNEL CONDITION AT DATE OF SURVEY.  
THE LOCATION OF ALL NAVIGATION AIDS ARE BASED ON INFORMATION PROVIDED BY THE U.S. COAST GUARD. BUOY LOCATIONS REPRESENT THE POSITION OF THE SINKER ONLY.

SURVEYED BY THE CORPS OF ENGINEERS.  
SOUNDINGS WERE TAKEN BY FATHOMETER AND ARE SHOWN TO THE NEAREST TENTH OF A FOOT. SOUNDINGS ARE BASED ON THE DATUM OF MEAN LOWER LOW WATER AT THE LOCALITY.  
THE PROJECT DEPTH IS 35 FEET.  
VERTICAL CONTROL: SUISUN BAY CHANNEL (LINES 00+00 TO 160+00) BENCHMARK "9" (1948), USC&GS DISK ELEV 14.875 FT MLLW. TIDE GAUGE LOCATED AT PORT OF BENICIA DOCK.  
(LINES 150+00 TO 500+00) BENCHMARK "5144-P" (1990 RESET 1997), USC&GS DISK ELEV 11.83 FT MLLW. TIDE GAUGE LOCATED AT CONCORD NAVAL WEAPONS STATION TUG DOCK, NOAA STATION.  
(LINES 660+00 TO 733+45) BENCHMARK "5096-B", USC&GS DISK ELEV 21.76 FT MLLW. TIDE GAUGE LOCATED AT DIABLO SERVICE DOCK.  
HORIZONTAL GPS CONTROL: COAST GUARD D-BEACON

PREPARED UNDER THE DIRECTION OF <b>KEVIN P. ARNETT</b> LT COLONEL, C.E., DISTRICT ENGINEER	Chart Date: Dec 01, 2021
Submet: Hydro Survey Team Leader	Designed by: PDT
Recommended: Chief, Hydro Survey Section	Plotted by: PDT
Approved: Chief, Construction Branch	Checked by: PDT
	Drawn by: PDT

CALIFORNIA  
**SUISUN BAY CHANNEL**  
POST-DREDGE SURVEY  
29 NOVEMBER 2021  
CONTRA COSTA COUNTY

**Sheet Reference Number**  
6 of 13



**PRELIMINARY ISSUE**  
THIS PLAN ISSUED FOR  
ADVANCE INFORMATION ONLY

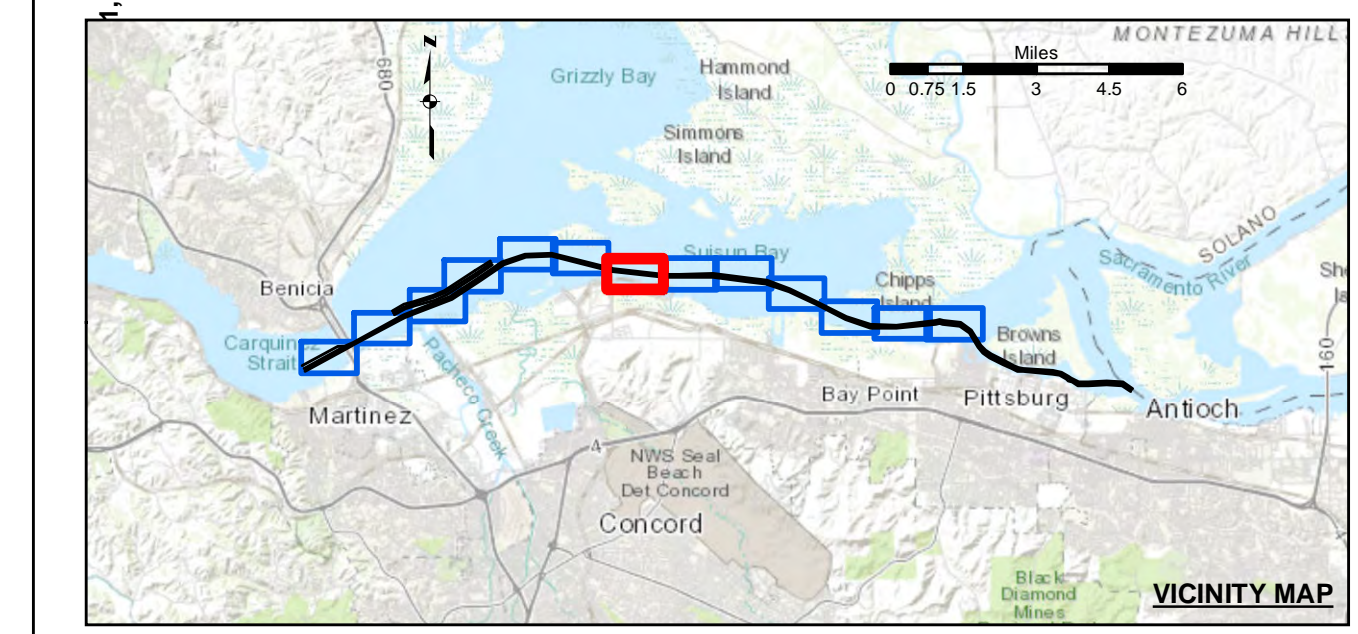
**US Army Corps of Engineers**  
San Francisco District  
450 Golden Gate Ave  
San Francisco, CA 94102

**DISCLAIMER**  
The United States Government furnishes the data represented by this map for informational purposes only. The data represents the results of a survey conducted on the date indicated and can only be considered to represent the general condition existing at that time. The information is provided for informational purposes only and is not intended for use in any other application. The user is responsible for the results of any application of the data for other than the intended purpose. The United States Government makes no warranty, expressed or implied, concerning the accuracy, completeness, or reliability of the data furnished. The United States Government assumes no liability whatsoever for any person or organization that makes use of the data for other than the intended purpose. These data belong to the Government. Therefore, the recipient may not transfer these data to others without also transferring this disclaimer.

Chart Date:	Dec 01, 2021
Designed by:	PDT
Plotted by:	PDT
Checked by:	PDT
Drawn by:	PDT

CALIFORNIA  
**SUISUN BAY CHANNEL**  
POST-DREDGE SURVEY  
29 NOVEMBER 2021

**Sheet Reference Number**  
7 of 13



- |                            |                    |                 |
|----------------------------|--------------------|-----------------|
| Federal Navigation Channel | Beacon, General    | <b>Contours</b> |
| Shoaling Area              | Obstruction Point  |                 |
| Placement Area             | Navigation Buoy    |                 |
| Anchorage Area             | Navigation Buoy    |                 |
| Wreck Area                 | Shoalest Sounding* |                 |
| Submerged Wreck            |                    | -35             |
| Angle Point                |                    | -34             |
|                            |                    | -33             |
|                            |                    | -32             |
|                            |                    | -31             |

**NOTES:**  
HORIZONTAL COORDINATE SYSTEM: NORTH AMERICAN DATUM OF 1983 (NAD83), PROJECTED TO THE STATE PLANE COORDINATE SYSTEM (SPCS), CALIFORNIA ZONE II. DISTANCE UNITS IN U.S. SURVEY FEET.  
VERTICAL DATUM: SOUNDINGS ARE SHOWN IN FEET AND INDICATE DEPTHS BELOW MEAN LOWER LOW WATER.  
THE INFORMATION DEPICTED ON THIS MAP REPRESENTS THE RESULTS OF A SURVEY CONDUCTED ON THE DATE INDICATED AND CAN ONLY BE CONSIDERED TO REPRESENT THE GENERAL CONDITION EXISTING AT THAT TIME.  
PLANE GRID, BEARING AND COORDINATES ARE BASED ON THE STATE OF CALIFORNIA COORDINATE SYSTEM, LAMBERT CONFORMAL PROJECTION, ZONE II NAD 83, CALIFORNIA, AS DESCRIBED IN SPECIAL PUBLICATION NO. 235, PUBLISHED BY NATIONAL OCEAN SURVEY, BASE MAPS ARE USDA NAMP 2010.  
\*SHOALEST SOUNDING PER QUARTER PER REACH  
DRAWING NOT TO BE USED FOR NAVIGATION, ONLY CHANNEL CONDITION AT DATE OF SURVEY.  
THE LOCATION OF ALL NAVIGATION AIDS ARE BASED ON INFORMATION PROVIDED BY THE U.S. COAST GUARD. BUOY LOCATIONS REPRESENT THE POSITION OF THE SINKER ONLY.

SURVEYED BY THE CORPS OF ENGINEERS.  
SOUNDINGS WERE TAKEN BY FATHOMETER AND ARE SHOWN TO THE NEAREST TENTH OF A FOOT. SOUNDINGS ARE BASED ON THE DATUM OF MEAN LOWER LOW WATER AT THE LOCALITY.  
THE PROJECT DEPTH IS 35 FEET.  
VERTICAL CONTROL: SUISUN BAY CHANNEL (LINES 00+00 TO 160+00) BENCHMARK "9" (1948), USC&GS DISK ELEV 14.875 FT MLLW, TIDE GAUGE LOCATED AT PORT OF BENICIA DOCK. (LINES 150+00 TO 500+00) BENCHMARK "5144-P" (1990 RESET 1997), USC&GS DISK ELEV 11.83 FT MLLW, TIDE GAUGE LOCATED AT CONCORD NAVAL WEAPONS STATION TUG DOCK, NOAA STATION. (LINES 660+00 TO 733+45) BENCHMARK "5096-B", USC&GS DISK ELEV 21.76 FT MLLW, TIDE GAUGE LOCATED AT DIABLO SERVICE DOCK.  
HORIZONTAL GPS CONTROL: COAST GUARD D-BEACON