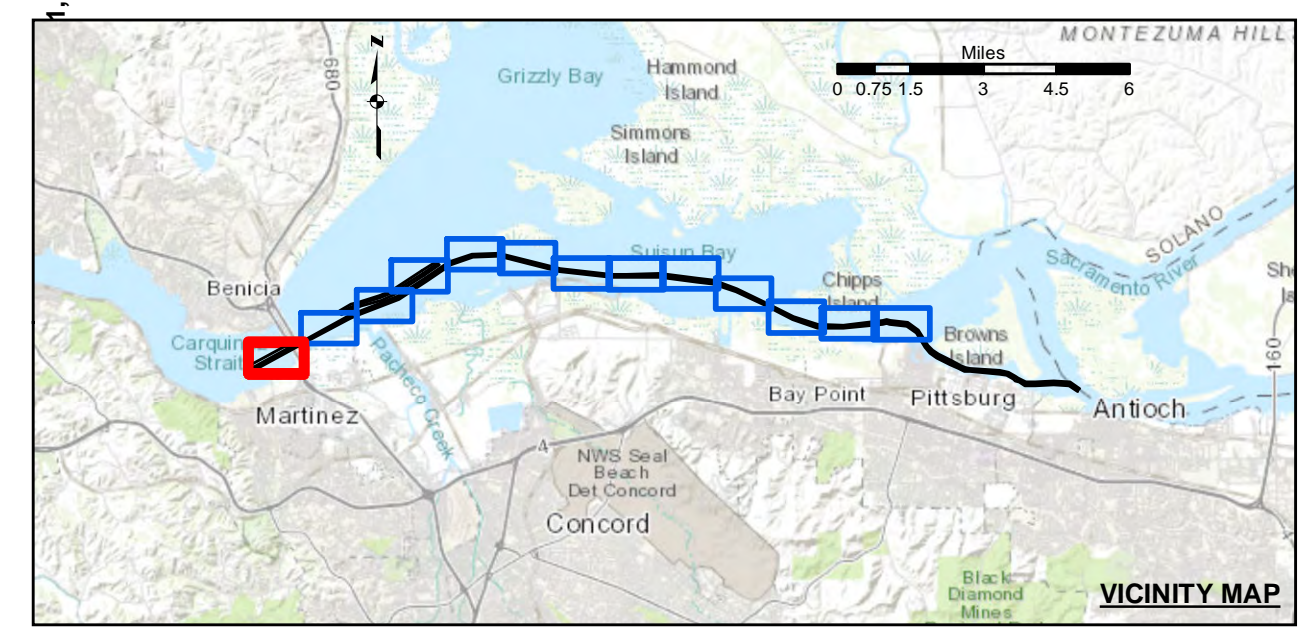
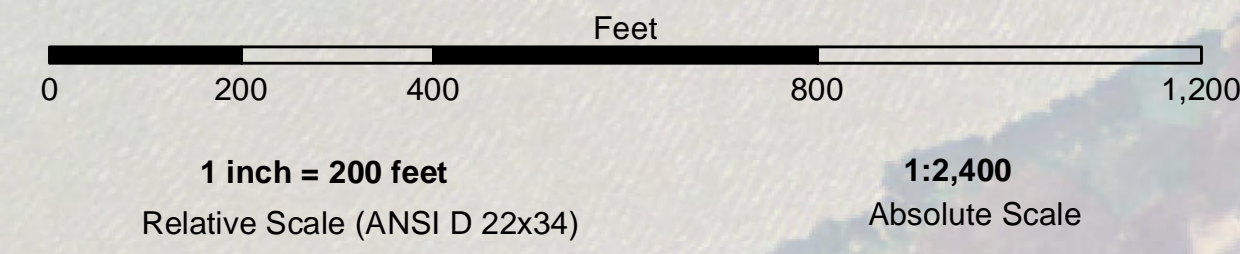


PRELIMINARY ISSUE
THIS PLAN ISSUED FOR
ADVANCE INFORMATION ONLY

US Army Corps of Engineers
San Francisco District
450 Golden Gate Ave
San Francisco, CA 94102

DISCLAIMER
The United States Government furnishes this information as a public service. It is not intended to be used for any purpose other than the intended purpose. The user is responsible for the results of any application of the data for other than the intended purpose. The user is responsible for the results of any application of the data for other than the intended purpose. The user is responsible for the results of any application of the data for other than the intended purpose.

Prepared Under the Direction of	Chart Date	Sept 22, 2022
LT COLONEL C.E. DISTRICT ENGINEER	Designed by:	PDT
Subject: Hydro Survey Team Leader	Plotted By:	PDT
Recommended: Chief, Hydro Survey Section	Checked By:	PDT
Approved: Chief, Construction Branch	Drawn by:	PDT



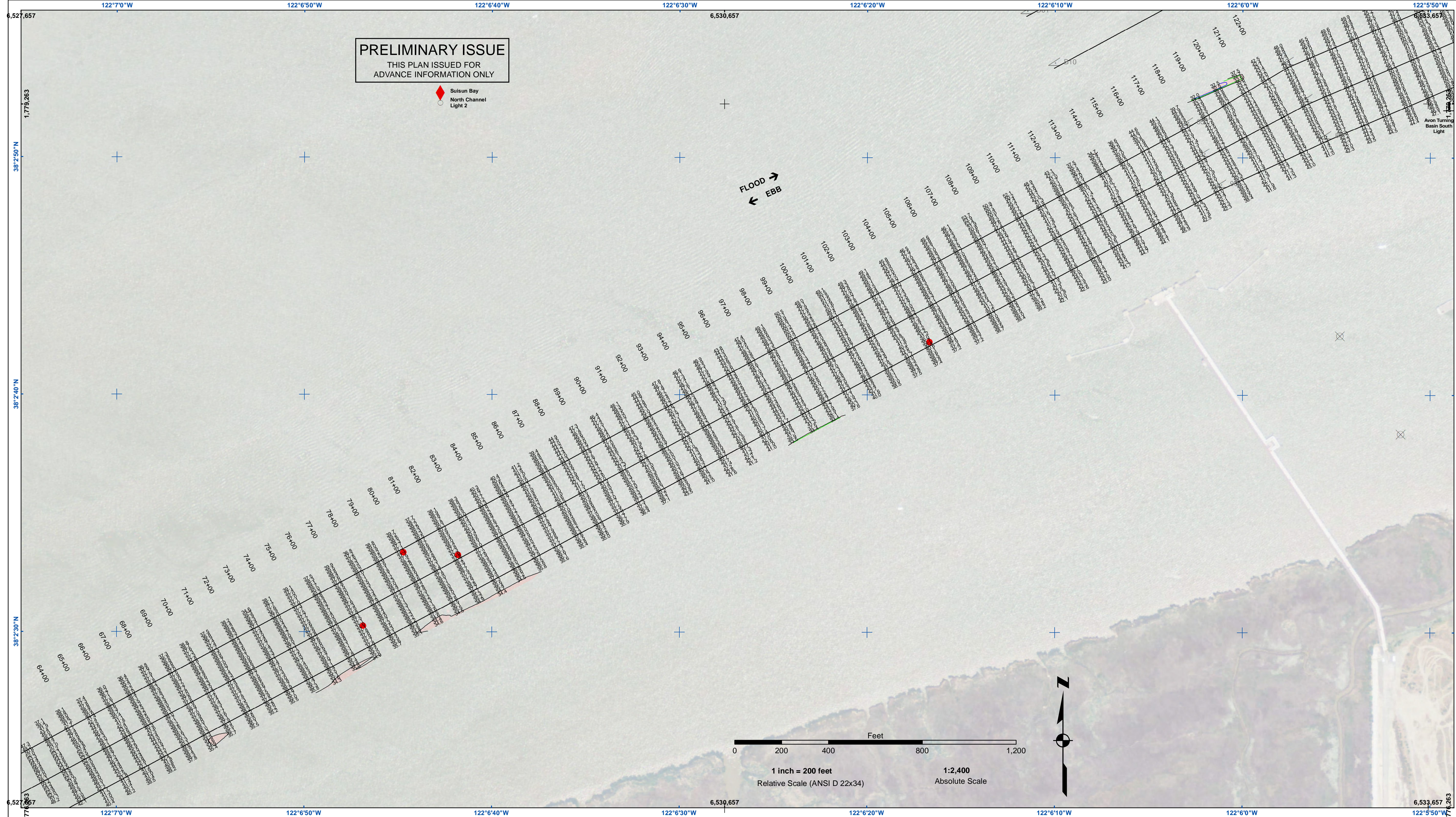
	Federal Navigation Channel		Beacon, General		-35
	Shoaling Area		Obstruction Point		-34
	Placement Area		Navigation Buoy		-33
	Anchorage Area		Navigation Buoy		-32
	Wreck Area		Shoalest Sounding*		-31
	Submerged Wreck				
	Angle Point				

NOTES:
HORIZONTAL COORDINATE SYSTEM: NORTH AMERICAN DATUM OF 1983 (NAD83), PROJECTED TO THE STATE PLANE COORDINATE SYSTEM (SPCS), CALIFORNIA ZONE II. DISTANCE UNITS IN U.S. SURVEY FEET.
VERTICAL DATUM: SOUNDINGS ARE SHOWN IN FEET AND INDICATE DEPTHS BELOW MEAN LOWER LOW WATER.
THE INFORMATION DEPICTED ON THIS MAP REPRESENTS THE RESULTS OF A SURVEY CONDUCTED ON THE DATE INDICATED AND CAN ONLY BE CONSIDERED TO REPRESENT THE GENERAL CONDITION EXISTING AT THAT TIME.
PLANE GRID, BEARING AND COORDINATES ARE BASED ON THE STATE OF CALIFORNIA COORDINATE SYSTEM, LAMBERT CONFORMAL PROJECTION, ZONE II NAD 83, CALIFORNIA, AS DESCRIBED IN SPECIAL PUBLICATION NO. 235, PUBLISHED BY NATIONAL OCEAN SURVEY, BASE MAPS ARE USDA NAMP 2010.
*SHOALEST SOUNDING PER QUARTER PER REACH
DRAWING NOT TO BE USED FOR NAVIGATION, ONLY CHANNEL CONDITION AT DATE OF SURVEY.
THE LOCATION OF ALL NAVIGATION AIDS ARE BASED ON INFORMATION PROVIDED BY THE U.S. COAST GUARD. BUOY LOCATIONS REPRESENT THE POSITION OF THE SINKER ONLY.

SURVEYED BY THE CORPS OF ENGINEERS.
SOUNDINGS WERE TAKEN BY FATHOMETER AND ARE SHOWN TO THE NEAREST TENTH OF A FOOT. SOUNDINGS ARE BASED ON THE DATUM OF MEAN LOWER LOW WATER AT THE LOCALITY.
THE PROJECT DEPTH IS 35 FEET.
VERTICAL CONTROL: SUISUN BAY CHANNEL (LINES 00+00 TO 160+00) BENCHMARK "9" (1948), USC&GS DISK ELEV 14.875 FT MLLW, TIDE GAUGE LOCATED AT PORT OF BENICIA DOCK.
(LINES 150+00 TO 500+00) BENCHMARK "5144-P" (1990 RESET 1997), USC&GS DISK ELEV 11.83 FT MLLW, TIDE GAUGE LOCATED AT CONCORD NAVAL WEAPONS STATION TUG DOCK, NOAA STATION.
(LINES 660+00 TO 733+45) BENCHMARK "5096-B", USC&GS DISK ELEV 21.76 FT MLLW, TIDE GAUGE LOCATED AT DIABLO SERVICE DOCK.
HORIZONTAL GPS CONTROL: COAST GUARD D-BEACON

CALIFORNIA
CONTRA COSTA COUNTY
SUISUN BAY CHANNEL
POST-DREDGE SURVEY
18 & 31 AUGUST 2022
01, 03 & 19 SEPTEMBER 2022

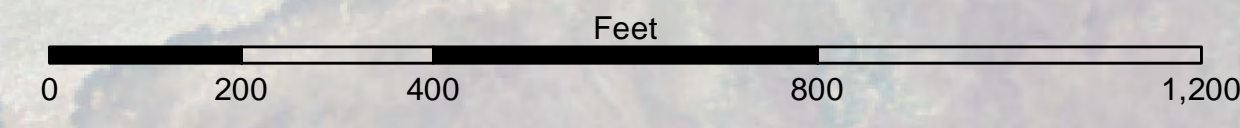
Sheet Reference Number
1 of 13



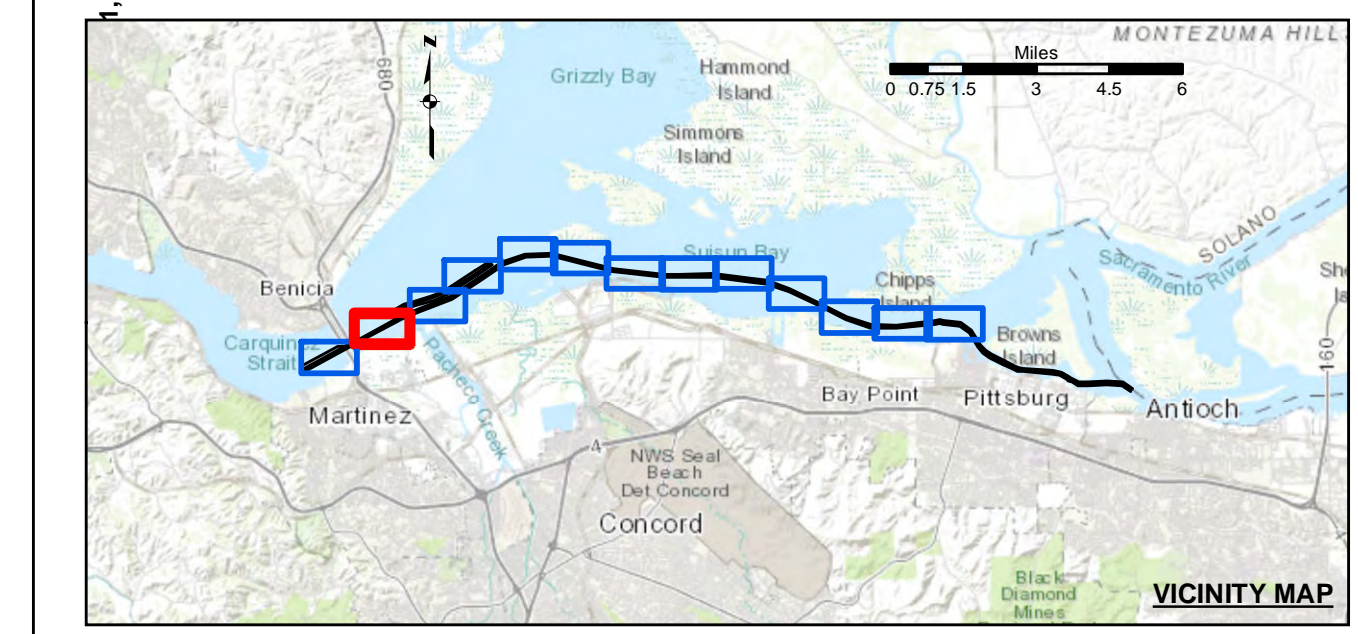
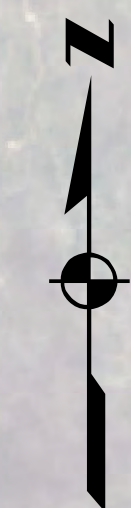
PRELIMINARY ISSUE
THIS PLAN ISSUED FOR
ADVANCE INFORMATION ONLY

Suisun Bay
North Channel
Light 2

FLOOD →
← EBB



1 inch = 200 feet
Relative Scale (ANSI D 22x34)
1:2,400
Absolute Scale



	Federal Navigation Channel		Beacon, General	Contours	
	Shoaling Area		Obstruction Point		
	Placement Area		Navigation Buoy		
	Anchorage Area		Navigation Buoy		
	Wreck Area		Shoalest Sounding*		
	Submerged Wreck				-35
	Angle Point				-34
					-33
					-32
					-31

NOTES:
HORIZONTAL COORDINATE SYSTEM:
NORTH AMERICAN DATUM OF 1983 (NAD83), PROJECTED TO THE STATE PLANE COORDINATE SYSTEM (SPCS), CALIFORNIA ZONE II. DISTANCE UNITS IN U.S. SURVEY FEET.
VERTICAL DATUM:
SOUNDINGS ARE SHOWN IN FEET AND INDICATE DEPTHS BELOW MEAN LOWER LOW WATER.
THE INFORMATION DEPICTED ON THIS MAP REPRESENTS THE RESULTS OF A SURVEY CONDUCTED ON THE DATE INDICATED AND CAN ONLY BE CONSIDERED TO REPRESENT THE GENERAL CONDITION EXISTING AT THAT TIME.
PLANE GRID, BEARING AND COORDINATES ARE BASED ON THE STATE OF CALIFORNIA COORDINATE SYSTEM, LAMBERT CONFORMAL PROJECTION, ZONE II NAD 83, CALIFORNIA, AS DESCRIBED IN SPECIAL PUBLICATION NO. 235, PUBLISHED BY NATIONAL OCEAN SURVEY, BASE MAPS ARE USDA NAIP 2010.
*SHOALEST SOUNDING PER QUARTER PER REACH
DRAWING NOT TO BE USED FOR NAVIGATION, ONLY CHANNEL CONDITION AT DATE OF SURVEY.
THE LOCATION OF ALL NAVIGATION AIDS ARE BASED ON INFORMATION PROVIDED BY THE U.S. COAST GUARD. BUOY LOCATIONS REPRESENT THE POSITION OF THE SINKER ONLY.

SURVEYED BY THE CORPS OF ENGINEERS.
SOUNDINGS WERE TAKEN BY FATHOMETER AND ARE SHOWN TO THE NEAREST TENTH OF A FOOT. SOUNDINGS ARE BASED ON THE DATUM OF MEAN LOWER LOW WATER AT THE LOCALITY.
THE PROJECT DEPTH IS 35 FEET.
VERTICAL CONTROL:
SUISUN BAY CHANNEL
(LINES 00+00 TO 160+00) BENCHMARK "9" (1948), USC&GS DISK ELEV 14.875 FT MLLW, TIDE GAUGE LOCATED AT PORT OF BENICIA DOCK.
(LINES 150+00 TO 500+00) BENCHMARK "5144-P" (1990 RESET 1997), USC&GS DISK ELEV 11.83 FT MLLW, TIDE GAUGE LOCATED AT CONCORD NAVAL WEAPONS STATION TUG DOCK, NOAA STATION.
(LINES 660+00 TO 733+45) BENCHMARK "5096-B", USC&GS DISK ELEV 21.76 FT MLLW, TIDE GAUGE LOCATED AT DIABLO SERVICE DOCK.
HORIZONTAL GPS CONTROL: COAST GUARD D-BEACON

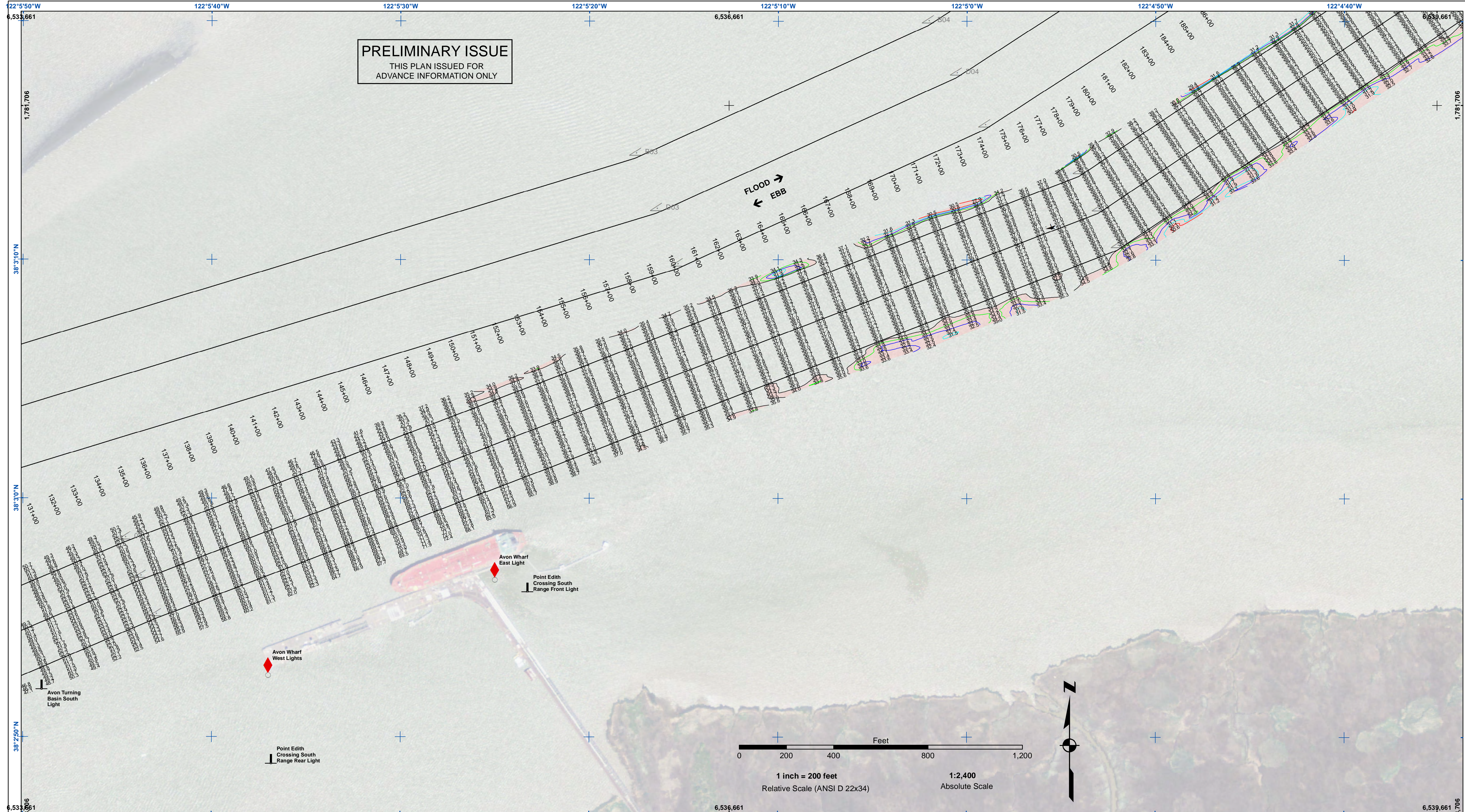
US Army Corps of Engineers
San Francisco District
450 Golden Gate Ave
San Francisco, CA 94102

DISCLAIMER
The United States Government furnishes this information as a service to the public and does not warrant, express or implied, the accuracy, completeness, or reliability of the information. The user assumes all liability for any use of the information. The user is responsible for the results of any application of the data for other than the intended purpose. These data belong to the Government. Therefore, the user may not transfer these data to others without also transferring this disclaimer.

Chart Date:	Sep 22, 2022
Designed by:	PDT
Plotted by:	PDT
Checked by:	PDT
Drawn by:	PDT

CALIFORNIA
SUISUN BAY CHANNEL
POST-DREDGE SURVEY
18 & 31 AUGUST 2022
01, 03 & 19 SEPTEMBER 2022

Sheet Reference Number
2 of 13

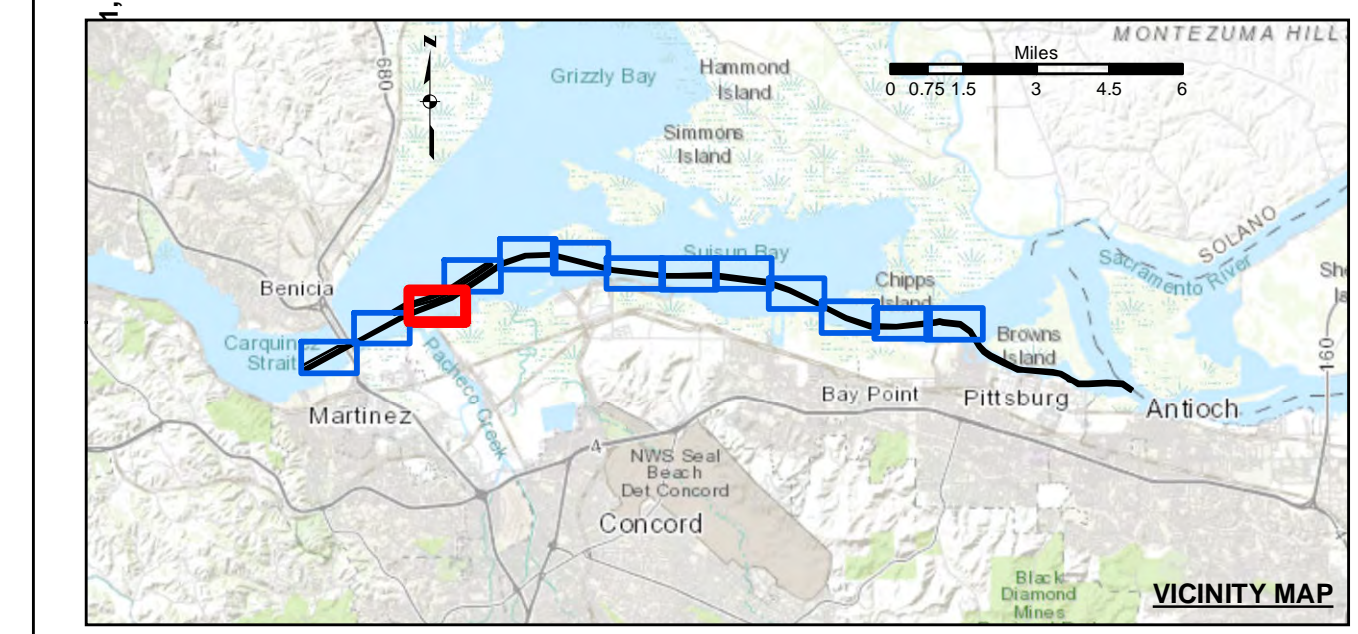


PRELIMINARY ISSUE
THIS PLAN ISSUED FOR
ADVANCE INFORMATION ONLY

US Army Corps of Engineers
San Francisco District
450 Golden Gate Ave
San Francisco, CA 94102

DISCLAIMER
The United States Government furnishes this information for your use only. It is not intended for any other purpose. The user is responsible for the results of any application of the data for other than its intended purpose. The United States Government makes no warranty, expressed or implied, concerning the accuracy, completeness, or timeliness of the information. The user is responsible for the results of any application of the data for other than its intended purpose. The user is responsible for the results of any application of the data for other than its intended purpose. The user is responsible for the results of any application of the data for other than its intended purpose.

Prepared Under the Direction of KEVIN P. ARNETT LT Colonel, C.E., District Engineer	Chart Date: Sep 22, 2022
Submitted: Hydro Survey Team Leader	Designed by: PDT
Recommended: Chief, Hydro Survey Section	Checked by: PDT
Approved: Chief, Construction Branch	Drawn by: PDT



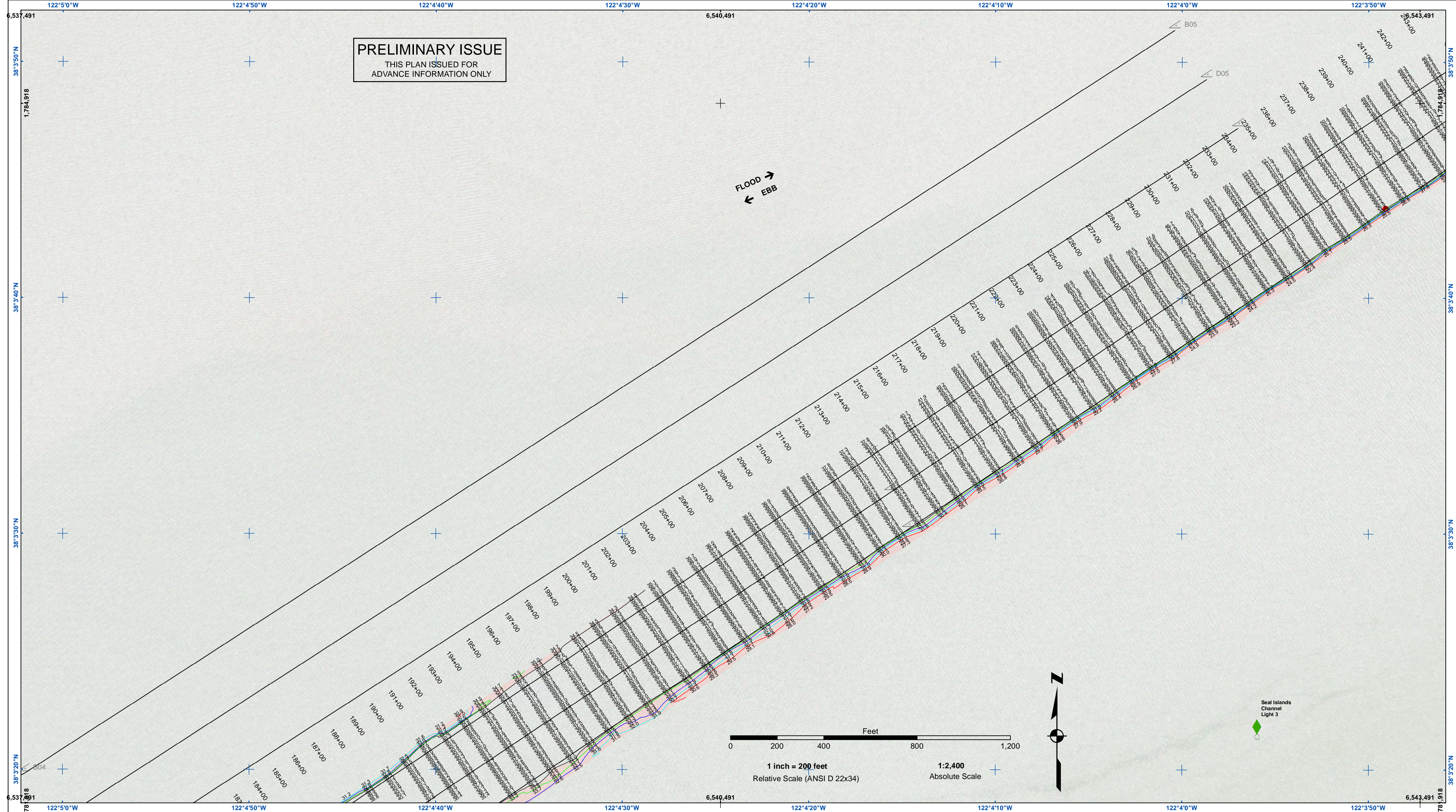
Federal Navigation Channel	Beacon, General	Contours
Shoaling Area	Obstruction Point	
Placement Area	Navigation Buoy	-35
Anchorage Area	Navigation Buoy	-34
Wreck Area	Shoalest Sounding*	-33
Submerged Wreck		-32
Angle Point		-31

NOTES:
HORIZONTAL COORDINATE SYSTEM: NORTH AMERICAN DATUM OF 1983 (NAD83), PROJECTED TO THE STATE PLANE COORDINATE SYSTEM (SPCS), CALIFORNIA ZONE II. DISTANCE UNITS IN U.S. SURVEY FEET.
VERTICAL DATUM: SOUNDINGS ARE SHOWN IN FEET AND INDICATE DEPTHS BELOW MEAN LOWER LOW WATER.
THE INFORMATION DEPICTED ON THIS MAP REPRESENTS THE RESULTS OF A SURVEY CONDUCTED ON THE DATE INDICATED AND CAN ONLY BE CONSIDERED TO REPRESENT THE GENERAL CONDITION EXISTING AT THAT TIME.
PLANE GRID, BEARING AND COORDINATES ARE BASED ON THE STATE OF CALIFORNIA COORDINATE SYSTEM, LAMBERT CONFORMAL PROJECTION, ZONE II NAD 83, CALIFORNIA, AS DESCRIBED IN SPECIAL PUBLICATION NO. 235, PUBLISHED BY NATIONAL OCEAN SURVEY, BASE MAPS ARE USDA NAMP 2010.
*SHOALEST SOUNDING PER QUARTER PER REACH
DRAWING NOT TO BE USED FOR NAVIGATION, ONLY CHANNEL CONDITION AT DATE OF SURVEY.
THE LOCATION OF ALL NAVIGATION AIDS ARE BASED ON INFORMATION PROVIDED BY THE U.S. COAST GUARD. BUOY LOCATIONS REPRESENT THE POSITION OF THE SINKER ONLY.

SURVEYED BY THE CORPS OF ENGINEERS.
SOUNDINGS WERE TAKEN BY FATHOMETER AND ARE SHOWN TO THE NEAREST TENTH OF A FOOT. SOUNDINGS ARE BASED ON THE DATUM OF MEAN LOWER LOW WATER AT THE LOCALITY.
THE PROJECT DEPTH IS 35 FEET.
VERTICAL CONTROL: SUISUN BAY CHANNEL (LINES 00+00 TO 160+00) BENCHMARK "9" (1948), USC&GS DISK ELEV 14.875 FT MLLW, TIDE GAUGE LOCATED AT PORT OF BENICIA DOCK.
(LINES 150+00 TO 500+00) BENCHMARK "5144-P" (1990 RESET 1997), USC&GS DISK ELEV 11.83 FT MLLW, TIDE GAUGE LOCATED AT CONCORD NAVAL WEAPONS STATION TUG DOCK, NOAA STATION.
(LINES 660+00 TO 733+45) BENCHMARK "5096-B", USC&GS DISK ELEV 21.76 FT MLLW, TIDE GAUGE LOCATED AT DIABLO SERVICE DOCK.
HORIZONTAL GPS CONTROL: COAST GUARD D-BEACON

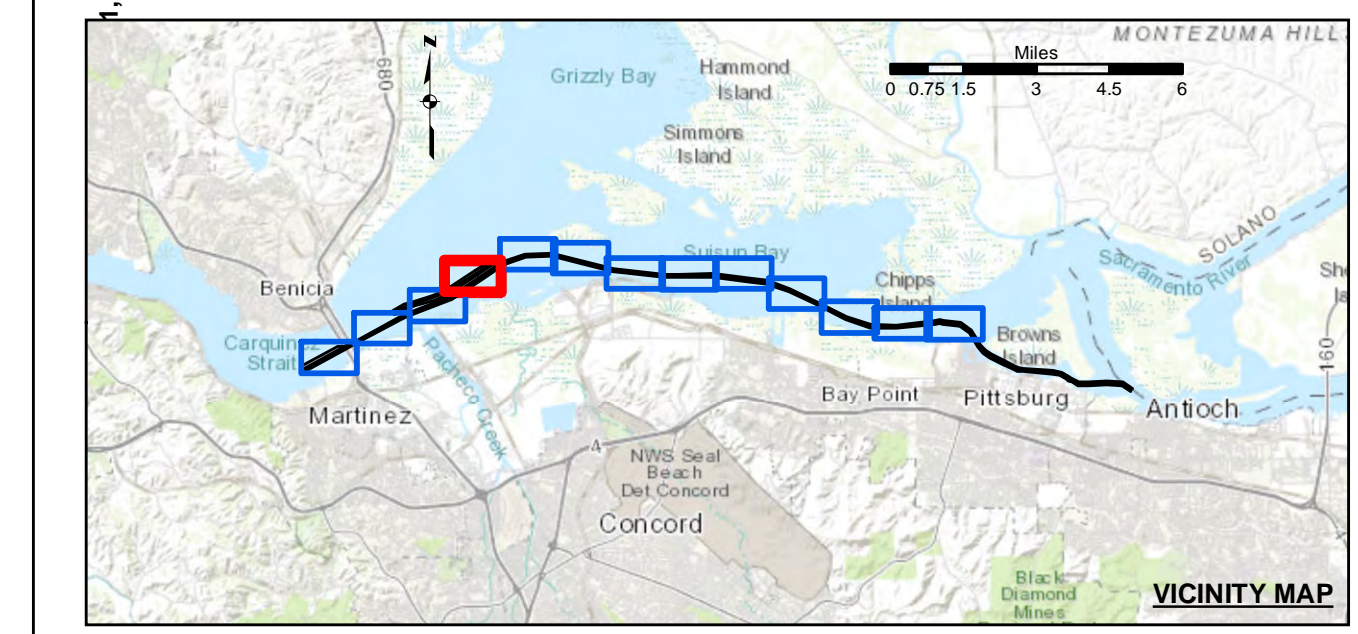
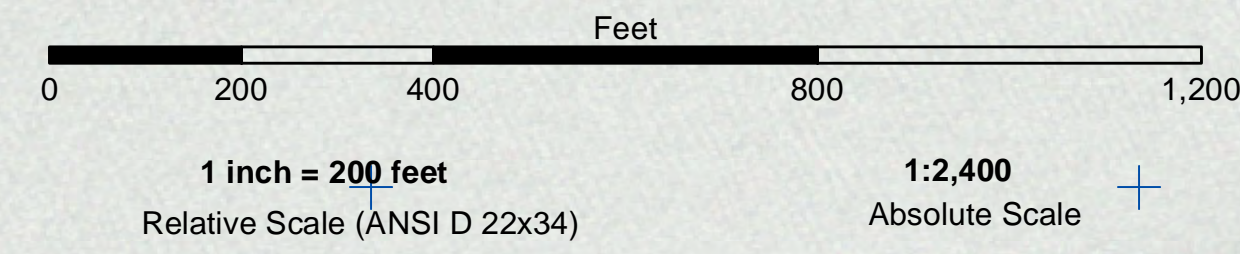
CALIFORNIA
CONTRA COSTA COUNTY
SUISUN BAY CHANNEL
POST-DREDGE SURVEY
18 & 31 AUGUST 2022
01, 03 & 19 SEPTEMBER 2022

Sheet Reference Number
3 of 13



PRELIMINARY ISSUE
THIS PLAN ISSUED FOR
ADVANCE INFORMATION ONLY

FLOOD →
← EBB



	Federal Navigation Channel		Beacon, General	Contours	
	Shoaling Area		Obstruction Point		
	Placement Area		Navigation Buoy		
	Anchorage Area		Navigation Buoy		
	Wreck Area		Shoalest Sounding*		
	Submerged Wreck				-35
	Angle Point				-34
					-33
					-32
					-31

NOTES:
HORIZONTAL COORDINATE SYSTEM:
NORTH AMERICAN DATUM OF 1983 (NAD83), PROJECTED TO THE STATE PLANE COORDINATE SYSTEM (SPCS), CALIFORNIA ZONE II. DISTANCE UNITS IN U.S. SURVEY FEET.
VERTICAL DATUM:
SOUNDINGS ARE SHOWN IN FEET AND INDICATE DEPTHS BELOW MEAN LOWER LOW WATER.
THE INFORMATION DEPICTED ON THIS MAP REPRESENTS THE RESULTS OF A SURVEY CONDUCTED ON THE DATE INDICATED AND CAN ONLY BE CONSIDERED TO REPRESENT THE GENERAL CONDITION EXISTING AT THAT TIME.
PLANE GRID, BEARING AND COORDINATES ARE BASED ON THE STATE OF CALIFORNIA COORDINATE SYSTEM, LAMBERT CONFORMAL PROJECTION, ZONE II NAD 83, CALIFORNIA, AS DESCRIBED IN SPECIAL PUBLICATION NO. 235, PUBLISHED BY NATIONAL OCEAN SURVEY, BASE MAPS ARE USDA NAIP 2010.
*SHOALEST SOUNDING PER QUARTER PER REACH
DRAWING NOT TO BE USED FOR NAVIGATION, ONLY CHANNEL CONDITION AT DATE OF SURVEY.
THE LOCATION OF ALL NAVIGATION AIDS ARE BASED ON INFORMATION PROVIDED BY THE U.S. COAST GUARD. BUOY LOCATIONS REPRESENT THE POSITION OF THE SINKER ONLY.

SURVEYED BY THE CORPS OF ENGINEERS.
SOUNDINGS WERE TAKEN BY FATHOMETER AND ARE SHOWN TO THE NEAREST TENTH OF A FOOT. SOUNDINGS ARE BASED ON THE DATUM OF MEAN LOWER LOW WATER AT THE LOCALITY.
THE PROJECT DEPTH IS 35 FEET.
VERTICAL CONTROL:
SUISUN BAY CHANNEL
(LINES 00+00 TO 160+00) BENCHMARK "9" (1948), USC&GS DISK ELEV 14.875 FT MLLW.
TIDE GAUGE LOCATED AT PORT OF BENICIA DOCK.
(LINES 150+00 TO 500+00) BENCHMARK "5144-P" (1990 RESET 1997), USC&GS DISK ELEV 11.83 FT MLLW.
TIDE GAUGE LOCATED AT CONCORD NAVAL WEAPONS STATION TUG DOCK, NOAA STATION.
(LINES 660+00 TO 733+45) BENCHMARK "5096-B", USC&GS DISK ELEV 21.76 FT MLLW.
TIDE GAUGE LOCATED AT DIABLO SERVICE DOCK.
HORIZONTAL GPS CONTROL: COAST GUARD D-BEACON

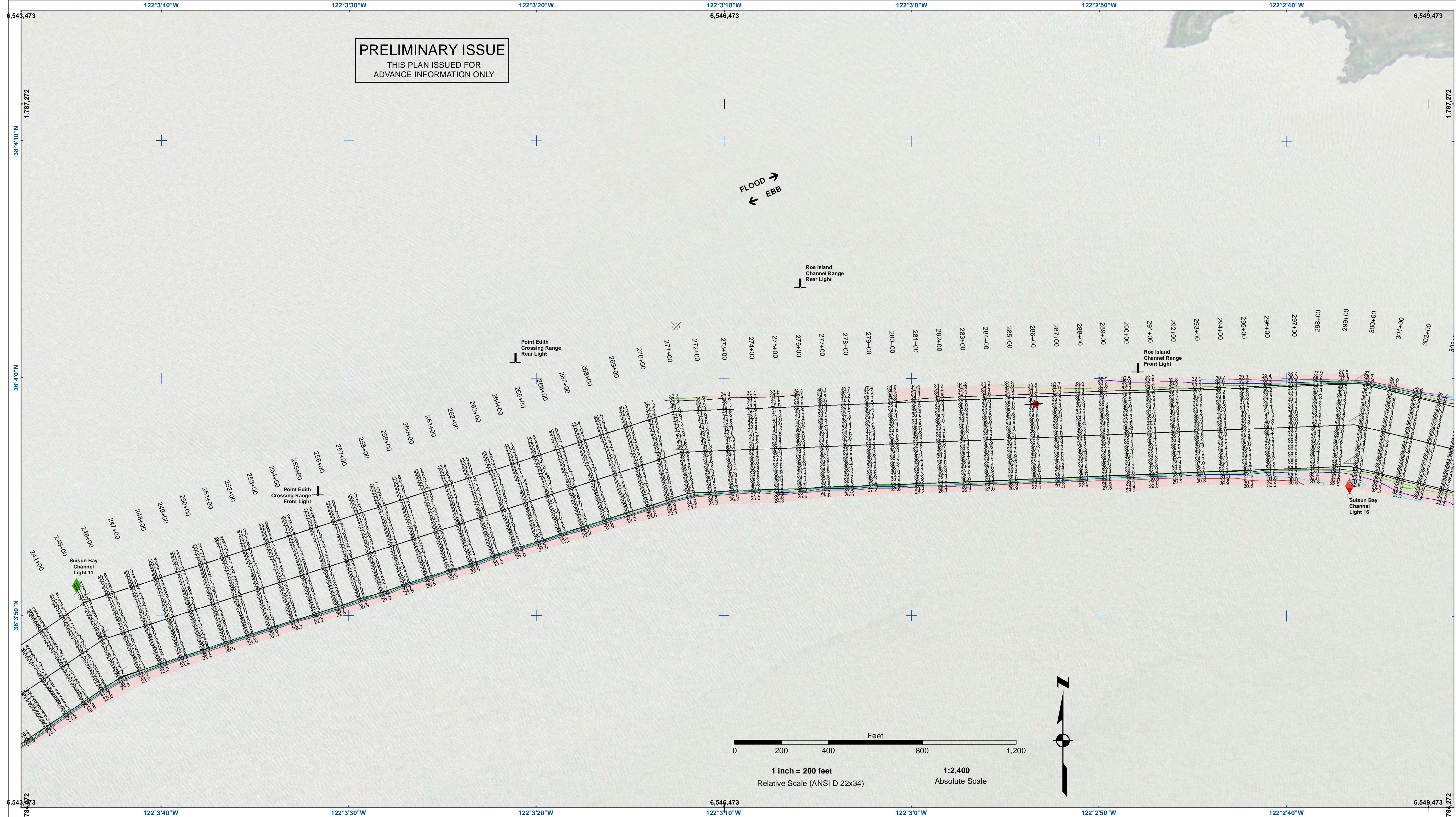
US Army Corps of Engineers
San Francisco District
450 Golden Gate Ave
San Francisco, CA 94102

DISCLAIMER
The United States Government furnishes this information as a public service. It is not intended to be used for any purpose other than the intended purpose. The United States Government makes no warranty, expressed or implied, concerning the accuracy, completeness, or timeliness of the information. The user is responsible for the results of any application of the data for other than the intended purpose. These data belong to the Government. Therefore, the user assumes all liability for any use of these data other than the intended purpose. The recipient may not transfer these data to others without also transferring this Disclaimer.

Prepared Under the Direction of	Chart Date
KEVIN P. ARNETT	Sep 22, 2022
Submittal	Designed by:
Hydro Survey Team Leader	PDT
Recommended	Checked by:
Chief, Hydro Survey Section	PDT
Approved	Drawn by:
Chief, Construction Branch	PDT

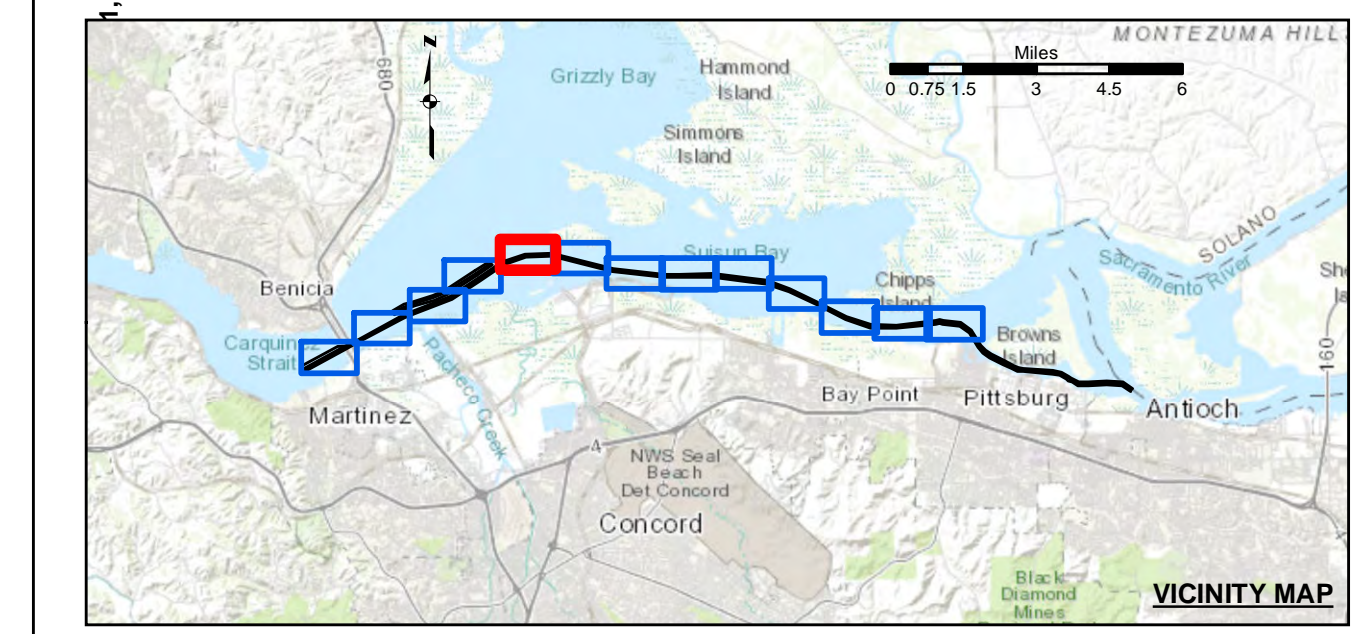
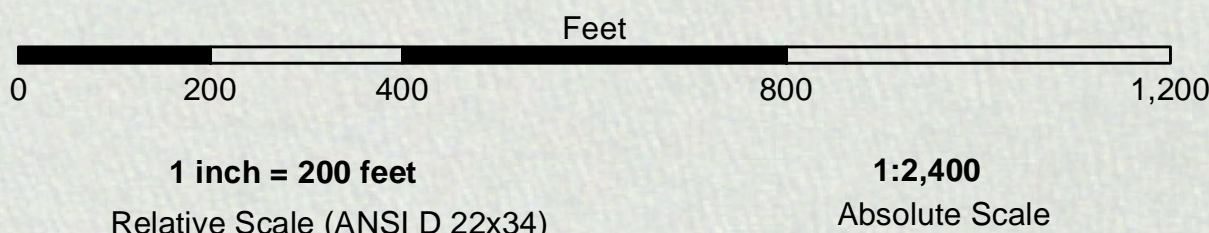
CALIFORNIA
CONTRA COSTA COUNTY
SUISUN BAY CHANNEL
POST-DREDGE SURVEY
18 & 31 AUGUST 2022
01, 03 & 19 SEPTEMBER 2022

Sheet Reference Number
4 of 13



PRELIMINARY ISSUE
THIS PLAN ISSUED FOR
ADVANCE INFORMATION ONLY

FLOOD →
← EBB



- | | | | | | |
|--|----------------------------|--|--------------------|-----------------|-----|
| | Federal Navigation Channel | | Beacon, General | Contours | |
| | Shoaling Area | | Obstruction Point | | |
| | Placement Area | | Navigation Buoy | | |
| | Anchorage Area | | Navigation Buoy | | |
| | Wreck Area | | Shoalest Sounding* | | |
| | Submerged Wreck | | | | -35 |
| | Angle Point | | | | -34 |
| | | | | | -33 |
| | | | | | -32 |
| | | | | | -31 |

NOTES:
HORIZONTAL COORDINATE SYSTEM:
NORTH AMERICAN DATUM OF 1983 (NAD83), PROJECTED TO THE STATE PLANE COORDINATE SYSTEM (SPCS), CALIFORNIA ZONE II. DISTANCE UNITS IN U.S. SURVEY FEET.
VERTICAL DATUM:
SOUNDINGS ARE SHOWN IN FEET AND INDICATE DEPTHS BELOW MEAN LOWER LOW WATER.
THE INFORMATION DEPICTED ON THIS MAP REPRESENTS THE RESULTS OF A SURVEY CONDUCTED ON THE DATE INDICATED AND CAN ONLY BE CONSIDERED TO REPRESENT THE GENERAL CONDITION EXISTING AT THAT TIME.
PLANE GRID, BEARING AND COORDINATES ARE BASED ON THE STATE OF CALIFORNIA COORDINATE SYSTEM, LAMBERT CONFORMAL PROJECTION, ZONE II NAD 83, CALIFORNIA, AS DESCRIBED IN SPECIAL PUBLICATION NO. 235, PUBLISHED BY NATIONAL OCEAN SURVEY, BASE MAPS ARE USDA NAIP 2010.
*SHOALEST SOUNDING PER QUARTER PER REACH
DRAWING NOT TO BE USED FOR NAVIGATION, ONLY CHANNEL CONDITION AT DATE OF SURVEY.
THE LOCATION OF ALL NAVIGATION AIDS ARE BASED ON INFORMATION PROVIDED BY THE U.S. COAST GUARD. BUOY LOCATIONS REPRESENT THE POSITION OF THE SINKER ONLY.

SURVEYED BY THE CORPS OF ENGINEERS.
SOUNDINGS WERE TAKEN BY FATHOMETER AND ARE SHOWN TO THE NEAREST TENTH OF A FOOT. SOUNDINGS ARE BASED ON THE DATUM OF MEAN LOWER LOW WATER AT THE LOCALITY.
THE PROJECT DEPTH IS 35 FEET.
VERTICAL CONTROL:
SUISUN BAY CHANNEL
(LINES 00+00 TO 160+00) BENCHMARK "9" (1948), USC&GS DISK ELEV 14.875 FT MLLW, TIDE GAUGE LOCATED AT PORT OF BENICIA DOCK.
(LINES 150+00 TO 500+00) BENCHMARK "5144-P" (1990 RESET 1997), USC&GS DISK, ELEV 11.83 FT MLLW, TIDE GAUGE LOCATED AT CONCORD NAVAL WEAPONS STATION TUG DOCK, NOAA STATION.
(LINES 660+00 TO 733+45) BENCHMARK "5096-B", USC&GS DISK, ELEV 21.76 FT MLLW, TIDE GAUGE LOCATED AT DIABLO SERVICE DOCK.
HORIZONTAL GPS CONTROL: COAST GUARD D-BEACON

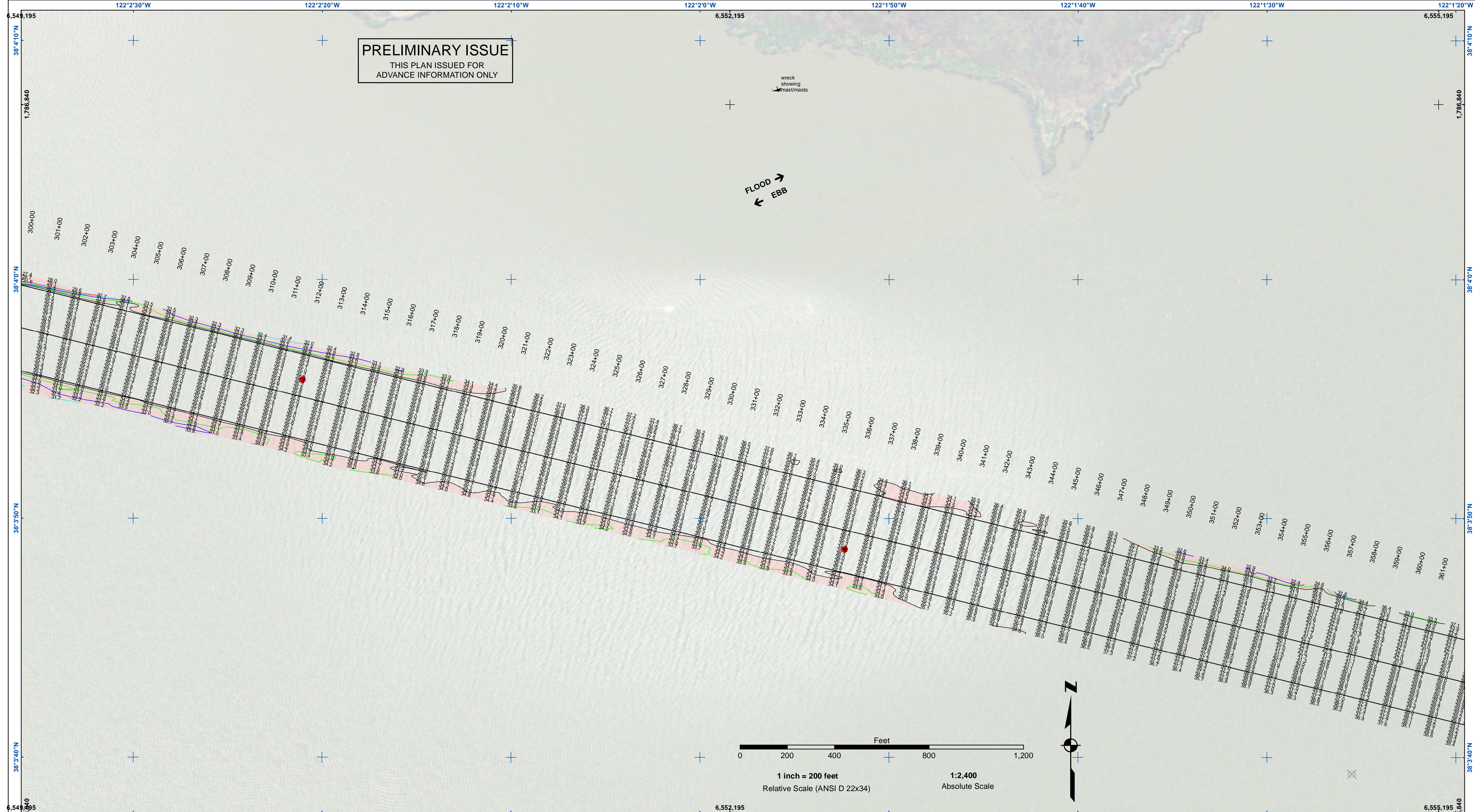


DISCLAIMER: The United States Government furnishes this information as a service to the public and does not warrant, express or implied, the accuracy, completeness, or reliability of the information. The user is responsible for the results of any application of the information. The United States Government shall not be liable for any damages, including reasonable attorneys' fees, arising from the use of this information. These data belong to the Government. Therefore the recipient may not transfer these data to others without also transferring this disclaimer.

Prepared Under the Direction of KEVIN P. ARNETT LT Colonel, C.E., District Engineer	Chart Date: Sep 22, 2022
Submitted: Hydro Survey Team Leader	Designed by: PDT
Recommended: Chief, Hydro Survey Section	Plotted by: PDT
Approved: Chief, Construction Branch	Checked by: PDT
	Drawn by: PDT

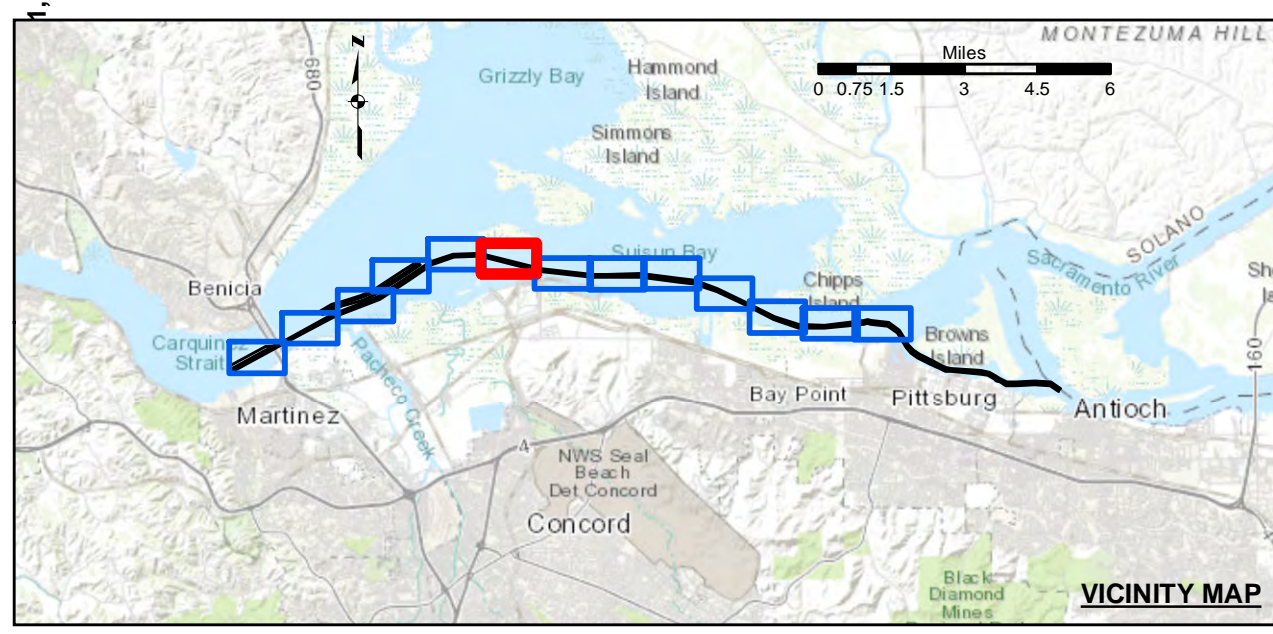
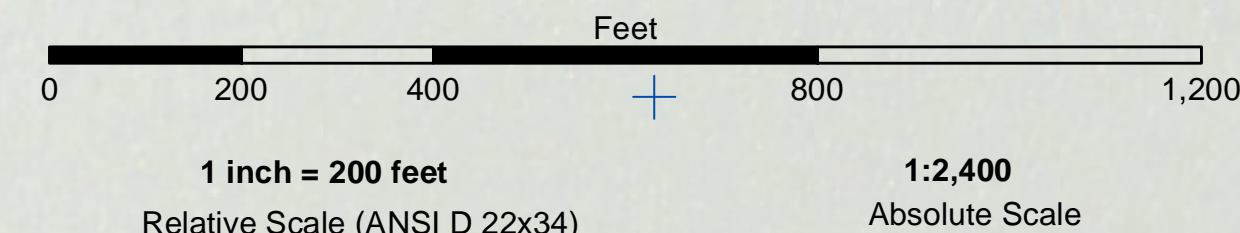
CALIFORNIA
SUISUN BAY CHANNEL
POST-DREDGE SURVEY
18 & 31 AUGUST 2022
01, 03 & 19 SEPTEMBER 2022

Sheet Reference Number 5 of 13



PRELIMINARY ISSUE
THIS PLAN ISSUED FOR
ADVANCE INFORMATION ONLY

FLOOD →
← EBB



- | | | | | | |
|--|----------------------------|--|--------------------|--|----------|
| | Federal Navigation Channel | | Beacon, General | | Contours |
| | Shoaling Area | | Obstruction Point | | -35 |
| | Placement Area | | Navigation Buoy | | -34 |
| | Anchorage Area | | Navigation Buoy | | -33 |
| | Wreck Area | | Shoalest Sounding* | | -32 |
| | Submerged Wreck | | | | -31 |
| | Angle Point | | | | |

NOTES:
HORIZONTAL COORDINATE SYSTEM:
NORTH AMERICAN DATUM OF 1983 (NAD83), PROJECTED TO THE STATE PLANE COORDINATE SYSTEM (SPCS), CALIFORNIA ZONE II. DISTANCE UNITS IN U.S. SURVEY FEET.
VERTICAL DATUM:
SOUNDINGS ARE SHOWN IN FEET AND INDICATE DEPTHS BELOW MEAN LOWER LOW WATER.
THE INFORMATION DEPICTED ON THIS MAP REPRESENTS THE RESULTS OF A SURVEY CONDUCTED ON THE DATE INDICATED AND CAN ONLY BE CONSIDERED TO REPRESENT THE GENERAL CONDITION EXISTING AT THAT TIME.
PLANE GRID, BEARING AND COORDINATES ARE BASED ON THE STATE OF CALIFORNIA COORDINATE SYSTEM, LAMBERT CONFORMAL PROJECTION, ZONE II NAD 83, CALIFORNIA, AS DESCRIBED IN SPECIAL PUBLICATION NO. 235, PUBLISHED BY NATIONAL OCEAN SURVEY, BASE MAPS ARE USDA NADP 2010.
*SHOALEST SOUNDING PER QUARTER PER REACH
DRAWING NOT TO BE USED FOR NAVIGATION, ONLY CHANNEL CONDITION AT DATE OF SURVEY.
THE LOCATION OF ALL NAVIGATION AIDS ARE BASED ON INFORMATION PROVIDED BY THE U.S. COAST GUARD. BUOY LOCATIONS REPRESENT THE POSITION OF THE SINKER ONLY.

SURVEYED BY THE CORPS OF ENGINEERS.
SOUNDINGS WERE TAKEN BY FATHOMETER AND ARE SHOWN TO THE NEAREST TENTH OF A FOOT. SOUNDINGS ARE BASED ON THE DATUM OF MEAN LOWER LOW WATER AT THE LOCALITY.
THE PROJECT DEPTH IS 35 FEET.
VERTICAL CONTROL:
SUISUN BAY CHANNEL
(LINES 00+00 TO 160+00) BENCHMARK "9" (1948), USC&GS DISK ELEV 14.875 FT MLLW,
TIDE GAUGE LOCATED AT PORT OF BENICIA DOCK.
(LINES 150+00 TO 500+00) BENCHMARK "5144-P" (1990 RESET 1997), USC&GS DISK, ELEV 11.83 FT MLLW,
TIDE GAUGE LOCATED AT CONCORD NAVAL WEAPONS STATION TUG DOCK, NOAA STATION.
(LINES 660+00 TO 733+45) BENCHMARK "5096-B", USC&GS DISK, ELEV 21.76 FT MLLW,
TIDE GAUGE LOCATED AT DIABLO SERVICE DOCK.
HORIZONTAL GPS CONTROL: COAST GUARD D-BEACON

US Army Corps of Engineers
San Francisco District
450 Golden Gate Ave
San Francisco, CA 94102

DISCLAIMER
The United States Government furnishes this information as a public service. It is not intended to be used for any purpose other than the intended purpose. The user is responsible for the results of any application of the data for other than the intended purpose. The United States Government makes no warranty, expressed or implied, concerning the accuracy, completeness, or reliability of the information furnished. The United States Government assumes no liability whatsoever to any person by reason of any use made thereof. These data belong to the Government. Therefore the recipient may not transfer these data to others without also transferring this disclaimer.

Prepared Under the Direction of KEVIN P. ARNETT LT Colonel, C.E., District Engineer	Surveyed By: PDT	Chart Date: Sep 22, 2022
Submitted: Hydro Survey Team Leader	Plotted By: PDT	Designed by: PDT
Recommended: Chief, Hydro Survey Section	Checked By: PDT	Drawn by: PDT
Approved: Chief, Construction Branch		

CALIFORNIA
SUISUN BAY CHANNEL
POST-DREDGE SURVEY
18 & 31 AUGUST 2022
01, 03 & 19 SEPTEMBER 2022

Sheet Reference Number
6 of 13

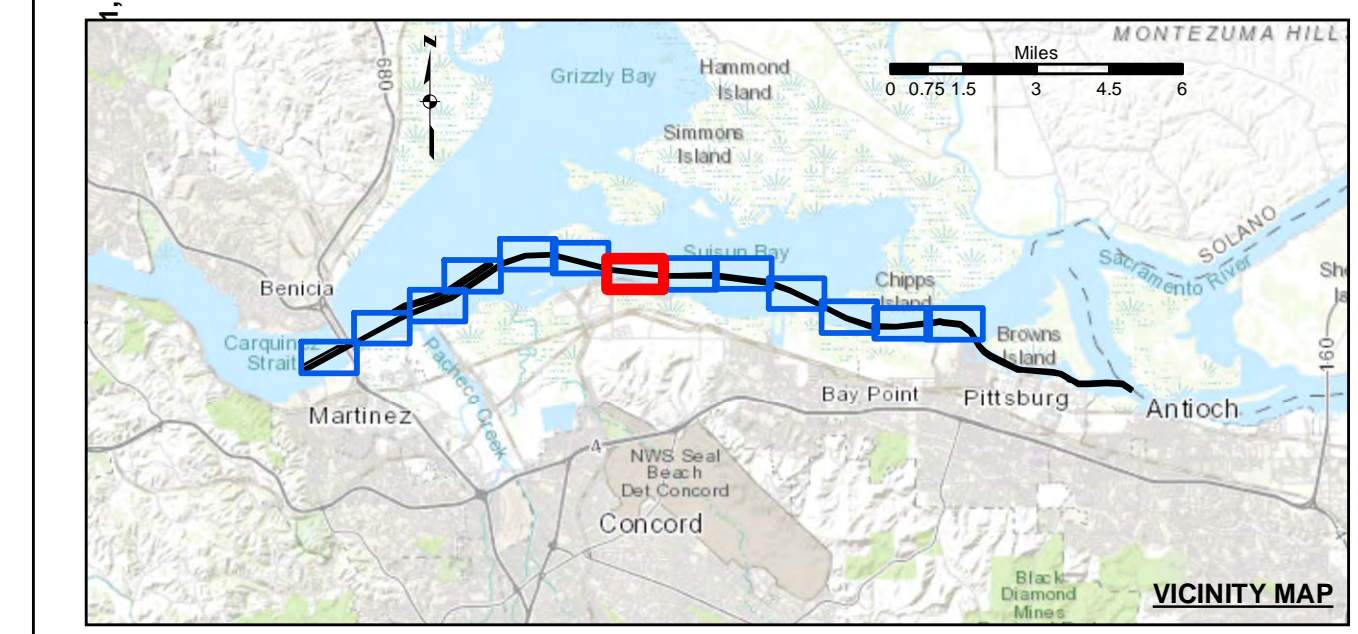


DISCLAIMER
The United States Government furnishes this information as a service to the public. It is not intended to be used for any purpose other than the intended purpose. The user of this information is responsible for its accuracy and for any consequences that may result from its use. The United States Government makes no warranty, expressed or implied, concerning the accuracy, completeness, or reliability of the information. The United States Government shall not be liable for any damages, including any consequential damages, arising out of the use of the information. The user of this information is responsible for its accuracy and for any consequences that may result from its use. The United States Government makes no warranty, expressed or implied, concerning the accuracy, completeness, or reliability of the information. The United States Government shall not be liable for any damages, including any consequential damages, arising out of the use of the information.

Prepared Under the Direction of KEVIN P. ARNETT LT Colonel, C.E., District Engineer	Chart Date: Sep 22, 2022
Submitted by: Hydro Survey Team Leader	Designed by: PDT
Recommended by: Chief, Hydro Survey Section	Plotted by: PDT
Approved by: Chief, Construction Branch	Checked by: PDT
	Drawn by: PDT

CALIFORNIA
SUISUN BAY CHANNEL
POST-DREDGE SURVEY
18 & 31 AUGUST 2022
01, 03 & 19 SEPTEMBER 2022

Sheet Reference Number
7 of 13



- Federal Navigation Channel
 - Shoaling Area
 - Placement Area
 - Anchorage Area
 - Wreck Area
 - Submerged Wreck
 - Angle Point
 - Beacon, General
 - Obstruction Point
 - Navigation Buoy
 - Navigation Buoy
 - Shoalest Sounding*
- Contours**
- 35
 - 34
 - 33
 - 32
 - 31

NOTES:

HORIZONTAL COORDINATE SYSTEM:
NORTH AMERICAN DATUM OF 1983 (NAD83), PROJECTED TO THE STATE PLANE COORDINATE SYSTEM (SPCS), CALIFORNIA ZONE II. DISTANCE UNITS IN U.S. SURVEY FEET.

VERTICAL DATUM:
SOUNDINGS ARE SHOWN IN FEET AND INDICATE DEPTHS BELOW MEAN LOWER LOW WATER.

THE INFORMATION DEPICTED ON THIS MAP REPRESENTS THE RESULTS OF A SURVEY CONDUCTED ON THE DATE INDICATED AND CAN ONLY BE CONSIDERED TO REPRESENT THE GENERAL CONDITION EXISTING AT THAT TIME.

PLANE GRID, BEARING AND COORDINATES ARE BASED ON THE STATE OF CALIFORNIA COORDINATE SYSTEM, LAMBERT CONFORMAL PROJECTION, ZONE II NAD 83, CALIFORNIA, AS DESCRIBED IN SPECIAL PUBLICATION NO. 235, PUBLISHED BY NATIONAL OCEAN SURVEY, BASE MAPS ARE USDA NAIP 2010.

*SHOALEST SOUNDING PER QUARTER PER REACH

DRAWING NOT TO BE USED FOR NAVIGATION, ONLY CHANNEL CONDITION AT DATE OF SURVEY. THE LOCATION OF ALL NAVIGATION AIDS ARE BASED ON INFORMATION PROVIDED BY THE U.S. COAST GUARD. BUOY LOCATIONS REPRESENT THE POSITION OF THE SINKER ONLY.

SURVEYED BY THE CORPS OF ENGINEERS.

SOUNDINGS WERE TAKEN BY FATHOMETER AND ARE SHOWN TO THE NEAREST TENTH OF A FOOT. SOUNDINGS ARE BASED ON THE DATUM OF MEAN LOWER LOW WATER AT THE LOCALITY.

THE PROJECT DEPTH IS 35 FEET.

VERTICAL CONTROL:
SUISUN BAY CHANNEL
(LINES 00+00 TO 160+00) BENCHMARK "9" (1948), USC&GS DISK ELEV 14.875 FT MLLW, TIDE GAUGE LOCATED AT PORT OF BENICIA DOCK.
(LINES 150+00 TO 500+00) BENCHMARK "5144-P" (1990 RESET 1997), USC&GS DISK ELEV 11.83 FT MLLW, TIDE GAUGE LOCATED AT CONCORD NAVAL WEAPONS STATION TUG DOCK, NOAA STATION.
(LINES 660+00 TO 733+45) BENCHMARK "5096-B", USC&GS DISK ELEV 21.76 FT MLLW, TIDE GAUGE LOCATED AT DIABLO SERVICE DOCK.

HORIZONTAL GPS CONTROL: COAST GUARD D-BEACON