

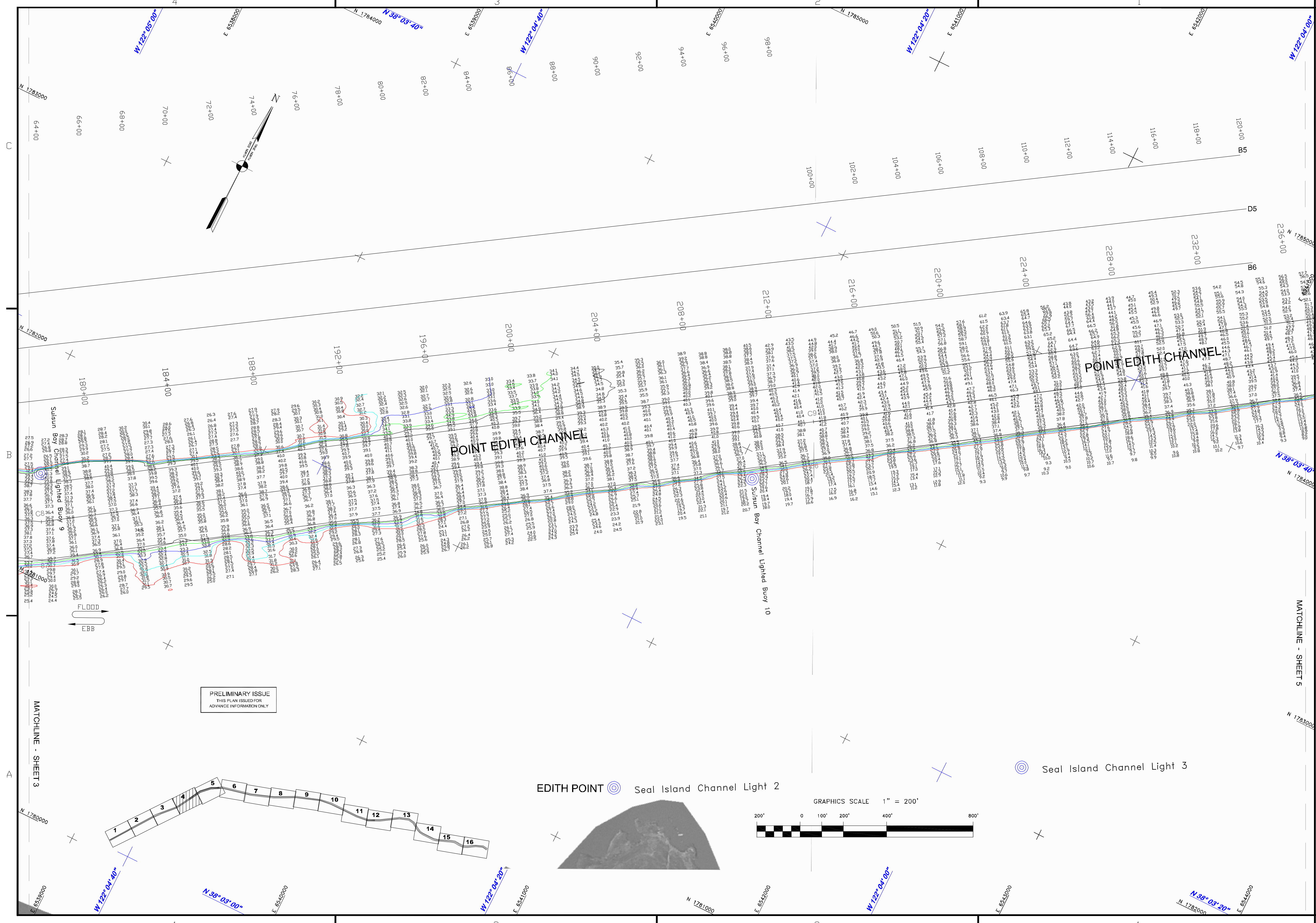
US Army Corps  
of Engineers  
San Francisco District  
1455 Market Street  
San Francisco, CA 94103

Mark	Description	Date	Appr.

SUBMITTED BY: PDT Survey Section Team Leader	DESIGNED BY: PDT	CHECKED BY: PDT	DRAWN BY: PDT
APPROVAL RECOMMENDED:	DATE: 02/01/2011	SHEET NO. 4 OF 16	DRAWING NO. 2 XXX
CHIEF, Geomatics Section APPROVER:	PREPARED UNDER THE DIRECTION OF <b>TORREY A. DICIRO</b> LT, COLONEL, U.S. DISTRICT ENGINEER		

CALIFORNIA  
CONTRA COSTA COUNTY  
SUISUN BAY CHANNEL  
POSTDREDGE COMPOSITE SURVEYS  
SEPTEMBER 2010 - JANUARY 2011

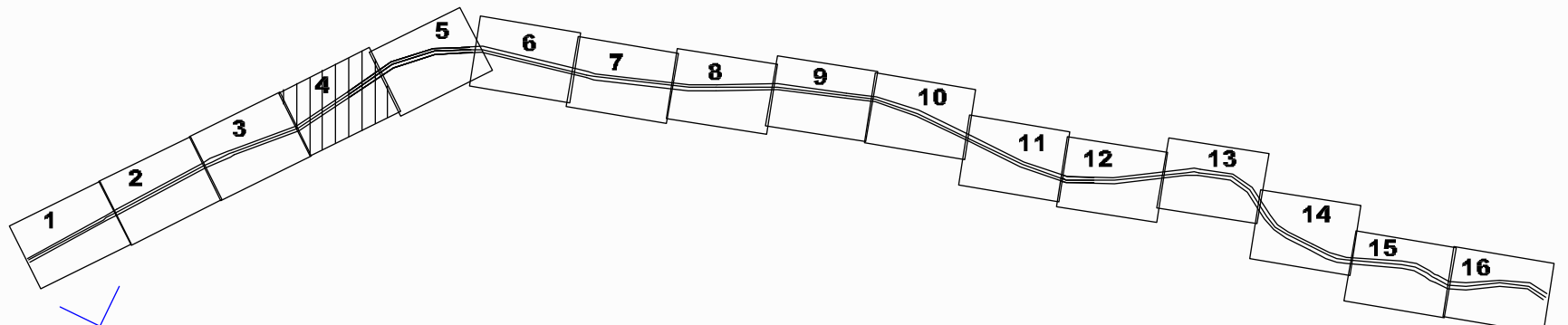
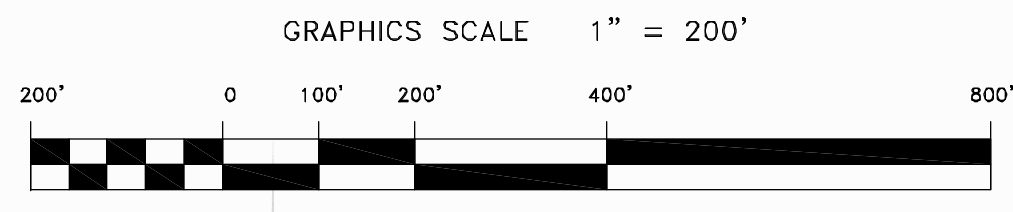
Sheet  
reference  
number  
**G4**



PRELIMINARY ISSUE  
THIS PLAN ISSUED FOR  
ADVANCE INFORMATION ONLY

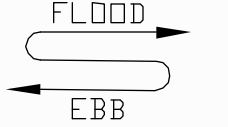
EDITH POINT Seal Island Channel Light 2

Seal Island Channel Light 3



MATCHLINE - SHEET 3

MATCHLINE - SHEET 5



64+00 66+00 68+00 70+00 72+00 74+00 76+00 78+00 80+00 82+00 84+00 86+00 88+00 90+00 92+00 94+00 96+00 98+00 100+00 102+00 104+00 106+00 108+00 110+00 112+00 114+00 116+00 118+00 120+00 B5  
180+00 184+00 188+00 192+00 196+00 200+00 204+00 208+00 212+00 216+00 220+00 224+00 228+00 232+00 236+00 B6