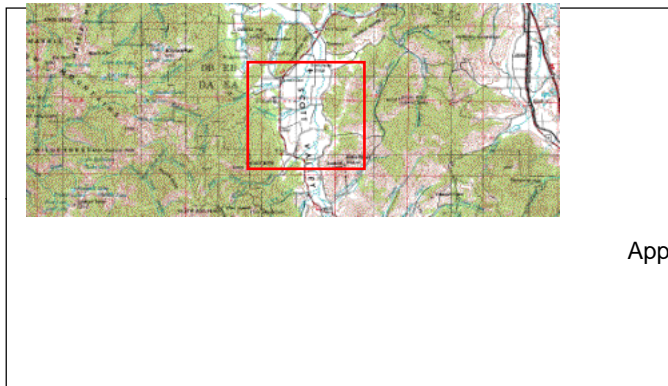


Overview Map



US Army Corps
of Engineers
Map Projection:
Web Mercator
World Geodetic System 1984

Approximate Map Scale: 1:108336

Date Printed: 05.13.2014

Figure 1. Kidder Creek gravel excavation area

LEGAL DESCRIPTION FOR AREA OF SOURCE MATERIALS

A PARCEL OF LAND LOCATED IN THE SOUTHEAST ONE-QUARTER OF SECTION 29, TOWNSHIP 43 NORTH, RANGE 9 WEST, MOUNT DIABLO BASE AND MERIDIAN, SISKIYOU COUNTY, STATE OF CALIFORNIA MORE PARTICULARLY DESCRIBED AS FOLLOWS:

COMMENCING AT THE SOUTH 1/4 CORNER OF SAID SECTION 29; THENCE NORTH 89° 45' 23" EAST, A DISTANCE OF 1236.36 FEET TO THE POINT OF BEGINNING FOR THIS DESCRIPTION;

THENCE NORTH 33° 33' 15" EAST, A DISTANCE OF 143.97 FEET; THENCE NORTH 59° 44' 02" EAST, A DISTANCE OF 121.35 FEET; THENCE NORTH 48° 42' 43" EAST, A DISTANCE OF 144.12 FEET; THENCE NORTH 54° 41' 46" EAST, A DISTANCE OF 404.91 FEET; THENCE NORTH 71° 22' 59" EAST, A DISTANCE OF 170.94 FEET; THENCE NORTH 60° 07' 32" EAST, A DISTANCE OF 258.78 FEET; THENCE NORTH 67° 59' 55" EAST, A DISTANCE OF 169.77 FEET; THENCE NORTH 35° 52' 51" EAST, A DISTANCE OF 80.22 FEET; THENCE NORTH 44° 41' 14" EAST, A DISTANCE OF 42.54 FEET; THENCE NORTH 75° 13' 12" EAST, A DISTANCE OF 49.72 FEET; THENCE SOUTH 85° 37' 06" EAST, A DISTANCE OF 26.81 FEET; THENCE SOUTH 80° 58' 08" EAST, A DISTANCE OF 109.24 FEET; THENCE SOUTH 54° 37' 16" EAST, A DISTANCE OF 72.87 FEET; THENCE SOUTH 76° 15' 50" EAST, A DISTANCE OF 26.81 FEET; THENCE SOUTH 54° 37' 16" EAST, A DISTANCE OF 26.81 FEET; THENCE SOUTH 75° 00' 21" EAST, A DISTANCE OF 65.69 FEET; THENCE SOUTH 80° 25' 46" EAST, A DISTANCE OF 85.57 FEET; THENCE NORTH 89° 16' 00" EAST, A DISTANCE OF 85.45 FEET; THENCE NORTH 72° 56' 44" EAST, A DISTANCE OF 107.83 FEET; MORE OR LESS, TO THE EAST LINE OF SAID SECTION 29; THENCE ALONG SAID EAST LINE, SOUTH 0° 29' 21" WEST, A DISTANCE OF 184.91 FEET; THENCE LEAVING SAID EAST LINE, SOUTH 52° 15' 25" WEST, A DISTANCE OF 87.10 FEET; THENCE SOUTH 68° 29' 03" WEST, A DISTANCE OF 114.47 FEET; THENCE SOUTH 61° 49' 27" WEST, A DISTANCE OF 72.31 FEET; THENCE SOUTH 44° 36' 09" WEST, A DISTANCE OF 96.62 FEET; THENCE SOUTH 40° 36' 38" WEST, A DISTANCE OF 74.60 FEET; THENCE SOUTH 86° 08' 47" WEST, A DISTANCE OF 95.03 FEET; THENCE NORTH 22° 55' 41" WEST, A DISTANCE OF 39.64 FEET; THENCE SOUTH 65° 22' 13" WEST, A DISTANCE OF 88.01 FEET; THENCE SOUTH 59° 56' 02" WEST, A DISTANCE OF 57.65 FEET; THENCE SOUTH 65° 44' 34" WEST, A DISTANCE OF 49.37 FEET; THENCE SOUTH 63° 42' 34" WEST, A DISTANCE OF 52.90 FEET; THENCE SOUTH 62° 46' 34" WEST, A DISTANCE OF 123.34 FEET; THENCE SOUTH 72° 55' 44" WEST, A DISTANCE OF 147.51 FEET; THENCE SOUTH 63° 42' 34" WEST, A DISTANCE OF 101.51 FEET; THENCE NORTH 32° 36' 57" WEST, A DISTANCE OF 64.62 FEET; THENCE SOUTH 57° 16' 28" WEST, A DISTANCE OF 75.68 FEET; THENCE SOUTH 38° 00' 19" WEST, A DISTANCE OF 63.81 FEET; THENCE SOUTH 26° 46' 51" WEST, A DISTANCE OF 90.71 FEET; THENCE SOUTH 48° 37' 05" WEST, A DISTANCE OF 112.76 FEET; THENCE SOUTH 64° 36' 33" WEST, A DISTANCE OF 56.74 FEET; THENCE SOUTH 88° 27' 28" WEST, A DISTANCE OF 102.77 FEET; THENCE SOUTH 70° 05' 02" WEST, A DISTANCE OF 142.41 FEET; THENCE SOUTH 65° 19' 18" WEST, A DISTANCE OF 107.77 FEET; THENCE SOUTH 89° 01' 19" WEST, A DISTANCE OF 74.60 FEET; THENCE SOUTH 65° 10' 52" WEST, A DISTANCE OF 110.08 FEET; THENCE SOUTH 62° 28' 19" WEST, A DISTANCE OF 181.10 FEET; MORE OR LESS, TO THE EASTERLY LINE OF STATE HIGHWAY ROUTE 3; THENCE ALONG SAID EASTERLY LINE THE FOLLOWING THREE COURSES: THENCE NORTH 18° 45' 03" EAST, A DISTANCE OF 121.93 FEET; THENCE SOUTH 71° 14' 57" EAST, A DISTANCE OF 5.00 FEET; THENCE NORTH 18° 45' 03" EAST, A DISTANCE OF 185.39 FEET; THENCE LEAVING SAID EASTERLY LINE, NORTH 54° 33' 39" EAST, A DISTANCE OF 190.82 FEET, MORE OR LESS, TO THE POINT OF BEGINNING AND THE TERMINUS OF THIS DESCRIPTION.

CONTAINING 14.2 ACRES, MORE OR LESS.

LEGAL DESCRIPTION FOR PROCESSING / STOCKPILING AREA

AND LOCATED IN THE SOUTHEAST ONE-QUARTER OF SECTION 29, TOWNSHIP 43 NORTH, RANGE 9 WEST, MOUNT DIABLO BASE AND MERIDIAN, SISKIYOU COUNTY, STATE OF CALIFORNIA MORE PARTICULARLY DESCRIBED AS FOLLOWS:

COMMENCING AT THE SOUTH 1/4 CORNER OF SAID SECTION 29; THENCE NORTH 47° 57' 52" EAST, A DISTANCE OF 1040.10 FEET TO THE POINT OF BEGINNING FOR THIS DESCRIPTION, SAID POINT BEING AN EXISTING FENCE CORNER;

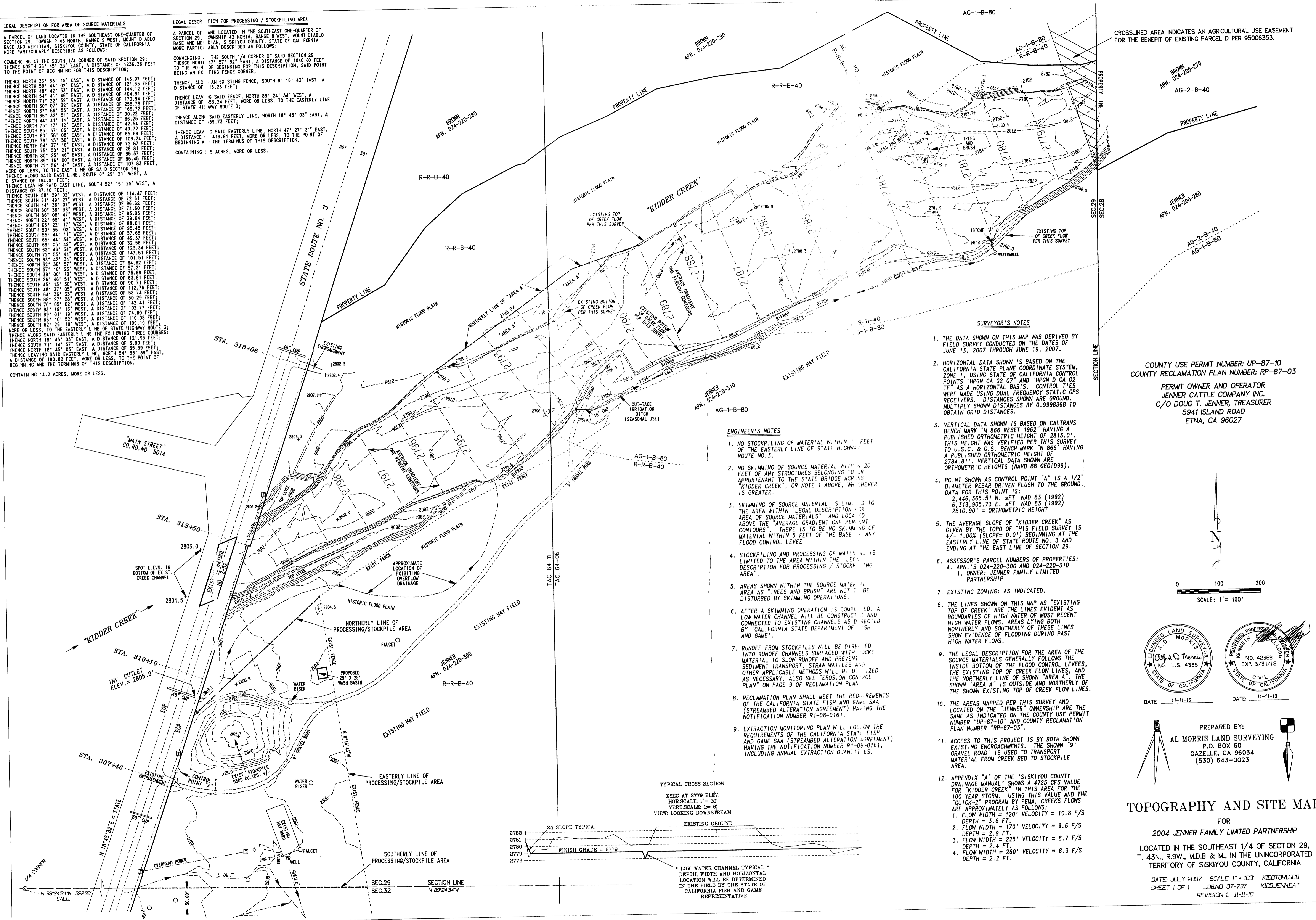
THENCE ALONG AN EXISTING FENCE, SOUTH 8° 16' 43" EAST, A DISTANCE OF 13.23 FEET;

THENCE LEAVE SAID FENCE, NORTH 89° 24' 34" WEST, A DISTANCE OF 53.24 FEET, MORE OR LESS, TO THE EASTERLY LINE OF STATE HIGHWAY ROUTE 3;

THENCE ALONG SAID EASTERLY LINE, NORTH 18° 45' 03" EAST, A DISTANCE OF 39.73 FEET;

THENCE LEAVE SAID EASTERLY LINE, NORTH 47° 27' 31" EAST, A DISTANCE OF 419.61 FEET, MORE OR LESS, TO THE POINT OF BEGINNING AND THE TERMINUS OF THIS DESCRIPTION.

CONTAINING 5 ACRES, MORE OR LESS.



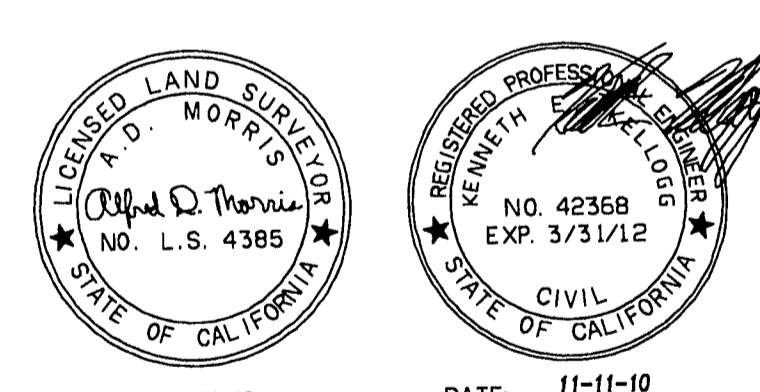
- SURVEYOR'S NOTES**
1. THE DATA SHOWN ON THIS MAP WAS DERIVED BY FIELD SURVEY CONDUCTED ON THE DATES OF JUNE 13, 2007 THROUGH JUNE 19, 2007.
 2. HORIZONTAL DATA SHOWN IS BASED ON THE CALIFORNIA STATE PLANE COORDINATE SYSTEM, ZONE 1, USING STATE OF CALIFORNIA CONTROL POINTS "HPGN CA 02 07" AND "HPGN CA 02 02" AS A HORIZONTAL BASIS. CONTROL TIES WERE MADE USING DUAL FREQUENCY STATIC GPS RECEIVERS. DISTANCES SHOWN ARE GROUND. MULTIPLY SHOWN DISTANCES BY 0.9998368 TO OBTAIN GRID DISTANCES.
 3. VERTICAL DATA SHOWN IS BASED ON CALTRANS BENCH MARK "M 866 RESET 1962" HAVING A PUBLISHED ORTHOMETRIC HEIGHT OF 2813.0', THIS HEIGHT WAS VERIFIED PER THIS SURVEY TO U.S.C. & G.S. BENCH MARK "N 866" HAVING A PUBLISHED ORTHOMETRIC HEIGHT OF 2784.81'. VERTICAL DATA SHOWN ARE ORTHOMETRIC HEIGHTS (NAVD 88 GEOID99).
 4. POINT SHOWN AS CONTROL POINT "A" IS A 1/2" DIAMETER REBAR DRIVEN FLUSH TO THE GROUND. DATA FOR THIS POINT IS:
2,446,365.51 N. SFT NAD 83 (1992)
6,313,905.73 E. SFT NAD 83 (1992)
2810.90' = ORTHOMETRIC HEIGHT
 5. THE AVERAGE SLOPE OF "KIDDER CREEK" AS GIVEN BY THE TOPO OF THIS FIELD SURVEY IS +/- 1.00% (SLOPE= 0.01) BEGINNING AT THE EASTERLY LINE OF STATE ROUTE NO. 3 AND ENDING AT THE EAST LINE OF SECTION 29.
 6. ASSESSOR'S PARCEL NUMBERS OF PROPERTIES:
A. APN. 'S 024-220-300 AND 024-220-310
1. OWNER: JENNER FAMILY LIMITED PARTNERSHIP
 7. EXISTING ZONING: AS INDICATED.
 8. THE LINES SHOWN ON THIS MAP AS "EXISTING TOP OF CREEK" ARE THE LINES EVIDENT AS BOUNDARIES OF HIGH WATER OF MOST RECENT HIGH WATER FLOWS. AREAS LYING BOTH NORTHERLY AND SOUTHERLY OF THESE LINES SHOW EVIDENCE OF FLOODING DURING PAST HIGH WATER FLOWS.
 9. THE LEGAL DESCRIPTION FOR THE AREA OF THE SOURCE MATERIALS GENERALLY FOLLOWS THE INSIDE BOTTOM OF THE FLOOD CONTROL LEVEES, THE EXISTING TOP OF CREEK FLOW LINES, AND THE NORTHERLY LINE OF SHOWN "AREA A", THE SHOWN "AREA A" IS OUTSIDE AND NORTHERLY OF THE SHOWN EXISTING TOP OF CREEK FLOW LINES.
 10. THE AREAS MAPPED PER THIS SURVEY AND LOCATED ON THE "JENNER" OWNERSHIP ARE THE SAME AS INDICATED ON THE COUNTY USE PERMIT NUMBER "UP-87-10" AND COUNTY RECLAMATION PLAN NUMBER "RP-87-03".
 11. ACCESS TO THIS PROJECT IS BY BOTH SHOWN EXISTING ENCROACHMENTS. THE SHOWN "9" GRAVEL ROAD IS USED TO TRANSPORT MATERIAL FROM CREEK BED TO STOCKPILE AREA.
 12. APPENDIX "A" OF THE 'SISKIYOU COUNTY DRAINAGE MANUAL' SHOWS A 4725 GFS VALUE FOR "KIDDER CREEK" IN THIS AREA FOR THE 100 YEAR STORM. USING THIS VALUE AND THE "QUICK-2" PROGRAM BY FEMA, CREEKS FLOWS ARE APPROXIMATELY AS FOLLOWS:
1. FLOW WIDTH = 120' VELOCITY = 10.8 F/S DEPTH = 3.6 FT.
2. FLOW WIDTH = 170' VELOCITY = 9.6 F/S DEPTH = 2.9 FT.
3. FLOW WIDTH = 225' VELOCITY = 8.7 F/S DEPTH = 2.4 FT.
4. FLOW WIDTH = 260' VELOCITY = 8.3 F/S DEPTH = 2.2 FT.

- ENGINEER'S NOTES**
1. NO STOCKPILING OF MATERIAL WITHIN 1 FEET OF THE EASTERLY LINE OF STATE HIGHWAY ROUTE NO. 3.
 2. NO SKIMMING OF SOURCE MATERIAL WITHIN 20 FEET OF ANY STRUCTURES BELONGING TO OR APPURTENANT TO THE STATE BRIDGE ACROSS "KIDDER CREEK", OR NOTE 1 ABOVE, WHICHEVER IS GREATER.
 3. SKIMMING OF SOURCE MATERIAL IS LIMITED TO THE AREA WITHIN "LEGAL DESCRIPTION" OR "AREA OF SOURCE MATERIALS", AND LOCATED ABOVE THE AVERAGE GRADIENT ONE PERCENT CONTOURS. THERE IS TO BE NO SKIMMING OF MATERIAL WITHIN 5 FEET OF THE BASE OF ANY FLOOD CONTROL LEVEE.
 4. STOCKPILING AND PROCESSING OF MATERIAL IS LIMITED TO THE AREA WITHIN THE "LEGAL DESCRIPTION FOR PROCESSING / STOCKPILING AREA".
 5. AREAS SHOWN WITHIN THE SOURCE MATERIAL AREA AS "TREES AND BRUSH" ARE NOT TO BE DISTURBED BY SKIMMING OPERATIONS.
 6. AFTER A SKIMMING OPERATION IS COMPLETED, A LOW WATER CHANNEL WILL BE CONSTRUCTED AND CONNECTED TO EXISTING CHANNELS AS DIRECTED BY "CALIFORNIA STATE DEPARTMENT OF FISH AND GAME".
 7. RUNOFF FROM STOCKPILES WILL BE DIRECTED INTO RUNOFF CHANNELS SURFACED WITH ROCKY MATERIAL TO SLOW RUNOFF AND PREVENT SEDIMENT TRANSPORT. STRAW BATTLES AND OTHER APPLICABLE METHODS WILL BE UTILIZED AS NECESSARY. ALSO SEE "EROSION CONTROL PLAN" ON PAGE 9 OF RECLAMATION PLAN.
 8. RECLAMATION PLAN SHALL MEET THE REQUIREMENTS OF THE CALIFORNIA STATE FISH AND GAME SAA (STREAMBED ALTERATION AGREEMENT) HAVING THE NOTIFICATION NUMBER R1-08-0161.
 9. EXTRACTION MONITORING PLAN WILL FOLLOW THE REQUIREMENTS OF THE CALIFORNIA STATE FISH AND GAME SAA (STREAMBED ALTERATION AGREEMENT) HAVING THE NOTIFICATION NUMBER R1-08-0161, INCLUDING ANNUAL EXTRACTION QUANTITIES.

TYPICAL CROSS SECTION
XSEC AT 2779 ELEV.
HORIZONTAL SCALE: 1" = 30'
VERTICAL SCALE: 1" = 6'
VIEW: LOOKING DOWNSTREAM

COUNTY USE PERMIT NUMBER: UP-87-10
COUNTY RECLAMATION PLAN NUMBER: RP-87-03

PERMIT OWNER AND OPERATOR
JENNER CATTLE COMPANY INC.
C/O DOUG T. JENNER, TREASURER
5941 ISLAND ROAD
ETNA, CA 96027



PREPARED BY:
AL MORRIS LAND SURVEYING
P.O. BOX 60
GAZELLE, CA 96034
(530) 643-0023

TOPOGRAPHY AND SITE MAP

FOR
2004 JENNER FAMILY LIMITED PARTNERSHIP
LOCATED IN THE SOUTHEAST 1/4 OF SECTION 29,
T. 43N., R.9W., M.D.B & M., IN THE UNINCORPORATED
TERRITORY OF SISKIYOU COUNTY, CALIFORNIA

DATE: JULY 2007 SCALE: 1" = 100' KIDDOR.LGD
SHEET 1 OF 1 JOB NO. 07-737 KIDDOR.NDAT
REVISION 1, 11-11-10

Figure 2. Kidder Creek gravel excavation plan