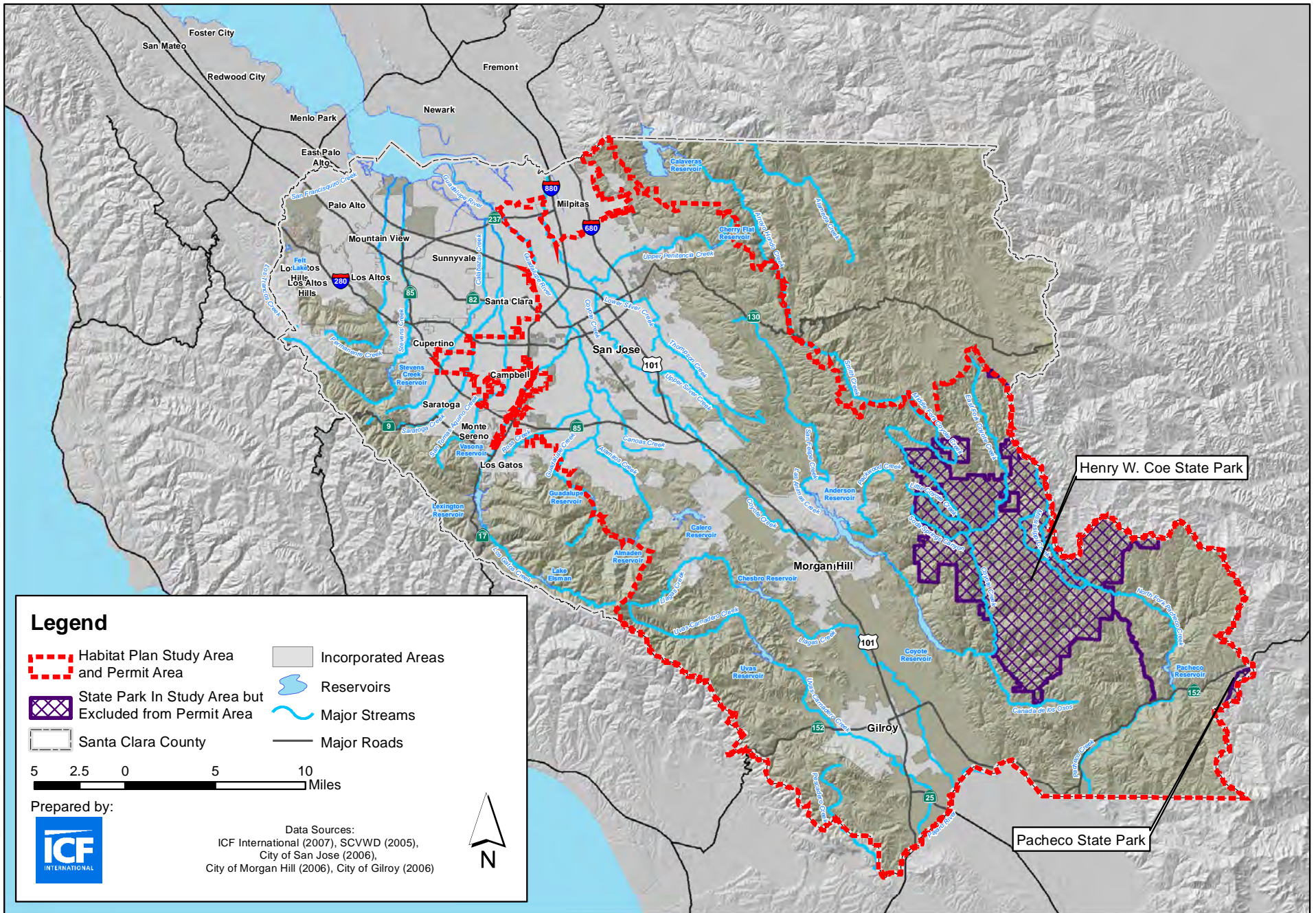


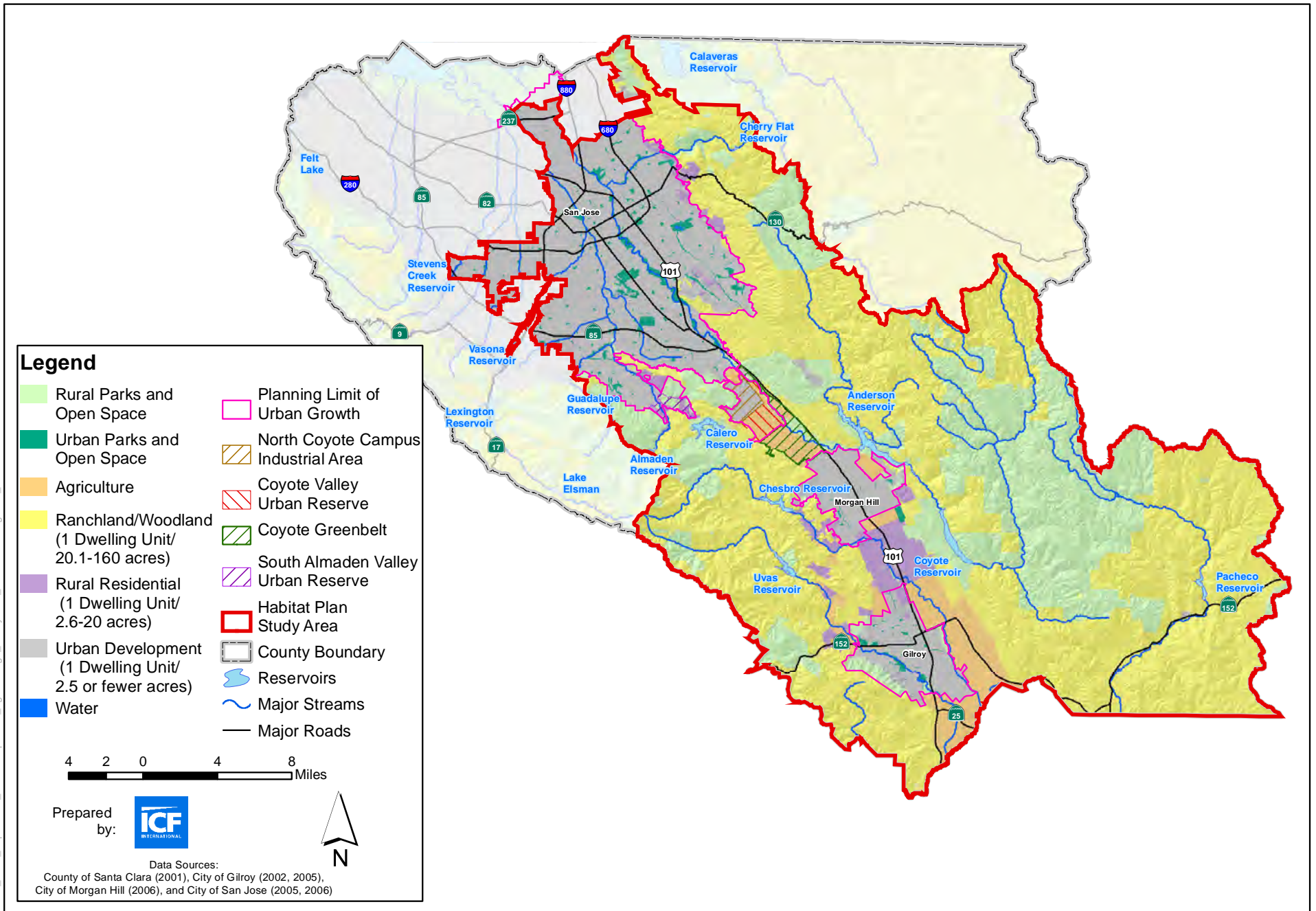
K:\PROJECTS\_2\ISANTA\_CLARA\_HCP\105489\_05\ARCMAP\CHAPTER1\_FIGS\FIG+2\_STUDYAREA\_8X11.MXD ds (03-22-10)



**Figure 1**  
**Santa Clara Valley Habitat Plan Study Area and Permit Area**



K:\Projects\_2\santa\_clara\_hop\05489\_05\arcmap\other\_figures\Fig2\_StudyArea\_LandUseCategories\_20131028.mxd DS 10/28/2013



**Figure 2**  
**Santa Clara Valley Habitat Plan Study Area Land Use Categories**

**Table 2.** Total Projected Permanent Impacts on Riparian, Wetlands, and Other Waters over the 5-Year RGP Permit Term (acres)

Land Cover Type	Total in Study Area	Estimated Permanent Impacts					Total Allowable Impact	% of Total in Study Area
		Urban Development	In-Stream Capital Projects	Rural Capital Project	Rural Development	Conservation Strategy Implementation		
<b>Riparian Forest and Scrub</b>								
Willow riparian forest and scrub	2,544	5.3	21.7	2.7	0.2	0.3	<b>30.2</b>	1.2%
Central California sycamore alluvial woodland	373	0.0	0.3	0.7	0.2	0.2	<b>1.3</b>	0.4%
Mixed riparian forest and woodland	3,766	0.8	10.3	5.2	1.0	0.8	<b>18.2</b>	0.5%
<i>Subtotal Riparian Forest and Scrub</i>	<i>6,682</i>	<i>6.2</i>	<i>32.3</i>	<i>8.5</i>	<i>1.3</i>	<i>1.3</i>	<b>49.7</b>	<i>0.7%</i>
<b>Wetland</b>								
Coastal and valley freshwater marsh	381	3.0	1.3	0.8	0.5	0.0	<b>2.5<sup>1</sup></b>	0.7%
Seasonal wetland	201	2.7	0.0	0.0	0.8	0.0	<b>1.5<sup>1</sup></b>	0.7%
<i>Subtotal Wetland</i>	<i>583</i>	<i>5.7</i>	<i>1.3</i>	<i>0.8</i>	<i>1.2</i>	<i>0.0</i>	<b>6.7</b>	<i>1.1%</i>
<b>Aquatic</b>								
Pond	1,110	6.7	0.8	0.0	1.0	0.2	<b>8.7</b>	0.8%
Riverine (miles)	2,391.5	0.0 <sup>2</sup>	1.2	0.3	0.1	0.0	<b>1.6</b>	0.1%
<i>Subtotal Aquatic</i>	<i>1,110</i>	<i>6.7</i>	<i>0.8</i>	<i>0.0</i>	<i>1.0</i>	<i>0.2</i>	<b>8.7</b>	<i>0.8%</i>
<b>TOTAL</b>	<b>8,375</b>	<b>18.5</b>	<b>34.5</b>	<b>9.3</b>	<b>3.5</b>	<b>1.5</b>	<b>65.0</b>	<b>0.8%</b>

<sup>1</sup> A maximum allowed impact is set for this land cover type that is lower than the total estimated impacts to ensure regulatory standards are met. Estimated impacts do not sum to the total allowable impact.

<sup>2</sup> Stream impacts occurring inside the planning limits of urban growth are included in the In-Stream Capital Projects category.

**Table 3.** Total Projected Temporary Impacts on Riparian, Wetlands, and Other Waters over the 5-Year RGP Permit Term (acres)

Land Cover Type	Total in Study Area	Estimated Temporary Impacts				Total Allowable Impact	% of Total in Study Area
		In-stream Capital Project Construction	In-stream O&M	Rural Capital Project Construction	Rural O&M		
<b>Riparian Forest and Scrub</b>							
Willow riparian forest and scrub	2,544	10.3	4.3	1.0	1.0	<b>16.7</b>	0.7%
Central California sycamore alluvial woodland	373	0.0	0.0	0.0	0.7	<b>0.7</b>	0.2%
Mixed riparian forest and woodland	3,766	6.5	4.5	1.3	3.7	<b>16.0</b>	0.4%
<i>Subtotal Riparian Forest and Scrub</i>	<i>6,682</i>	<i>16.8</i>	<i>8.8</i>	<i>2.3</i>	<i>5.3</i>	<b>33.3</b>	<i>0.5%</i>
<b>Wetland</b>							
Coastal and valley freshwater marsh	381	1.0	0.0	0.2	0.0	<b>1.2</b>	0.3%
Seasonal wetland	201	0.0	0.0	0.0	0.2	<b>0.2</b>	0.1%
<i>Subtotal Wetland</i>	<i>583</i>	<i>1.0</i>	<i>0.0</i>	<i>0.2</i>	<i>0.2</i>	<b>1.3</b>	<i>0.2%</i>
<b>Aquatic</b>							
Pond	1,110	0.8	0.0	0.0	0.5	<b>1.3</b>	0.1%
Riverine (miles)	2,391.5	7.5	0.3	0.3	0.0	<b>8.0</b>	0.3%
<i>Subtotal Aquatic</i>	<i>1,110</i>	<i>0.8</i>	<i>0.0</i>	<i>0.0</i>	<i>0.5</i>	<b>1.3</b>	<i>0.1%</i>
<b>TOTAL</b>	<b>8,375</b>	<b>18.7</b>	<b>8.8</b>	<b>2.5</b>	<b>6.0</b>	<b>36.0</b>	<b>0.4%</b>

Notes:

Temporary impacts shown for operation and maintenance activities are annual impacts. Construction impacts are one-time impacts.