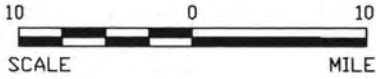




PROJECT SITE



LIMITS OF DREDGING NOTES:

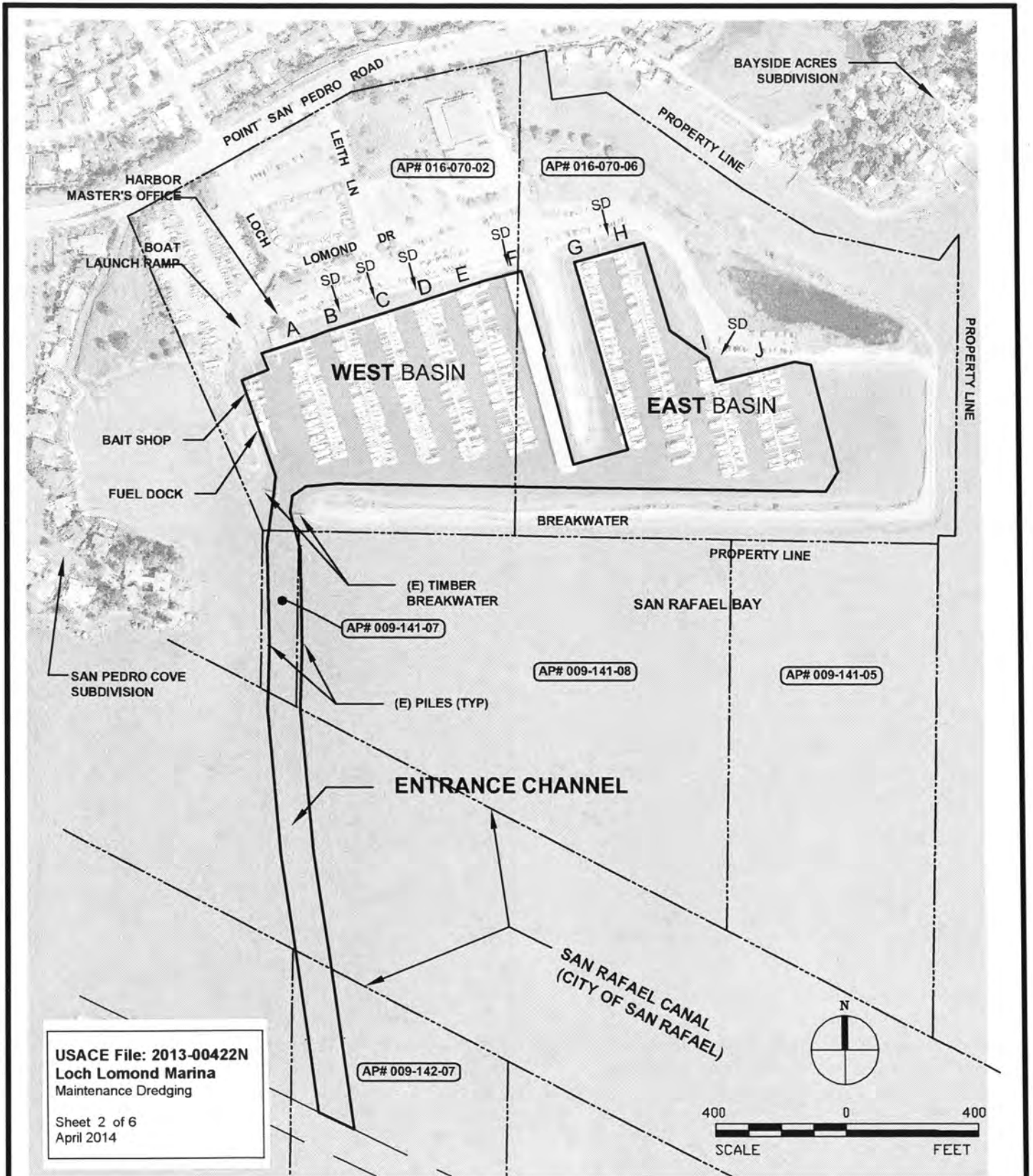
1. TYPICAL LIMIT OF DREDGING IN MARINA IS ALONG LANDSIDE EDGE OF DOCKS UNLESS NOTED OTHERWISE.
2. REMOVE SHOAL MAXIMUM 5 FEET BEYOND LIMIT OF DREDGING WHERE INDICATED.
3. REMOVE SHOAL UNDER BAIT & GAS DOCK BUILDING & UNDER BAIT TANKS.
4. LIMIT OF DREDGING OUTSIDE OF LAUNCH RAMP.

USACE File: 2013-00422N
Loch Lomond Marina
Maintenance Dredging

Sheet 1 of 6
April 2014

LOCH LOMOND MARINA 2014 MAINTENANCE DREDGING LOCATION MAP



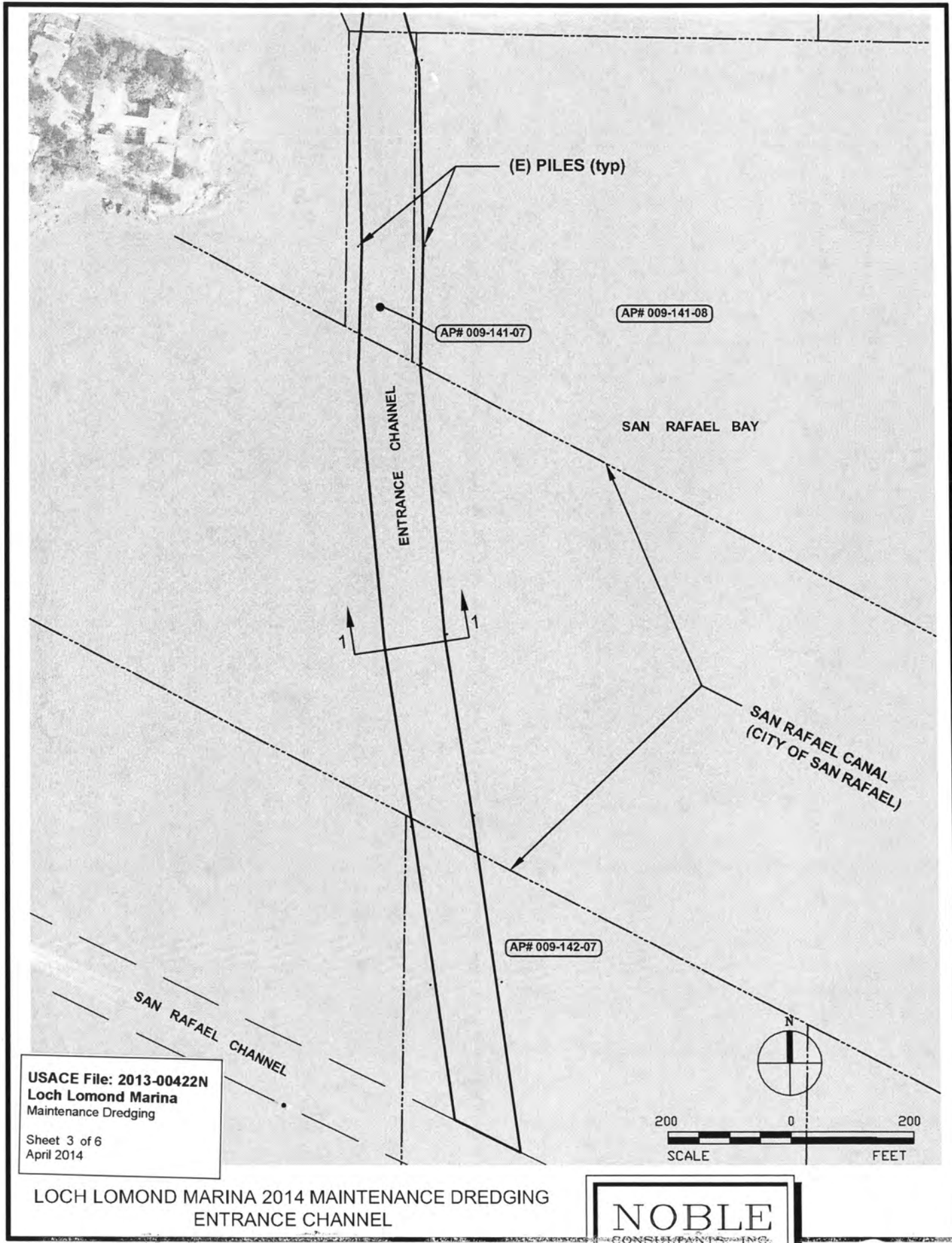


USACE File: 2013-00422N
 Loch Lomond Marina
 Maintenance Dredging
 Sheet 2 of 6
 April 2014

- A-H GATES A-H
- SD STORM DRAINS
- LIMIT OF DREDGING (TYP)
- - - - - PROPERTY LINE

LOCH LOMOND MARINA 2014 MAINTENANCE DREDGING
 SITE MAP

NOBLE
 CONSULTANTS, INC.



(E) PILES (typ)

AP# 009-141-07

AP# 009-141-08

ENTRANCE CHANNEL

SAN RAFAEL BAY

SAN RAFAEL CANAL
(CITY OF SAN RAFAEL)

AP# 009-142-07

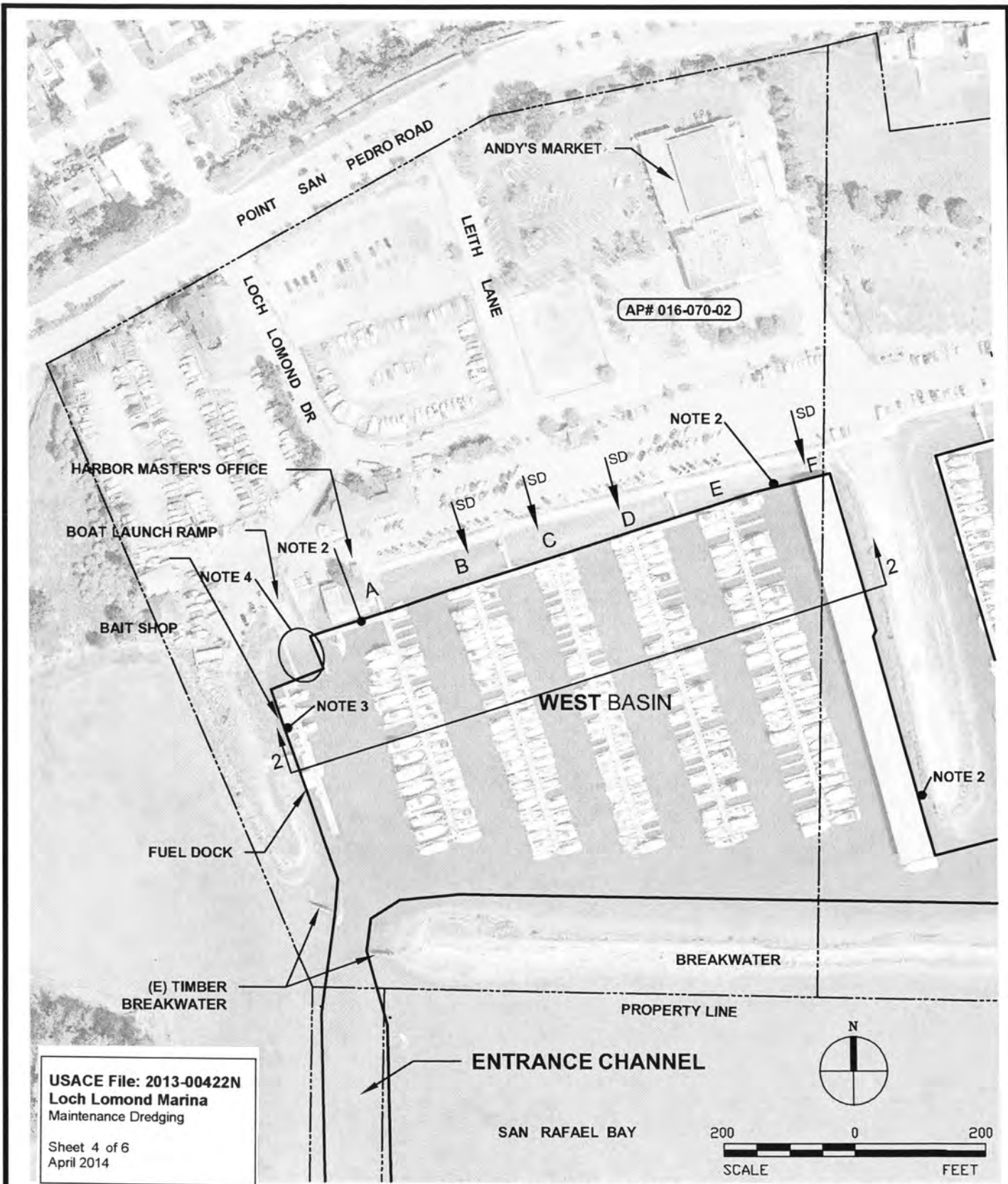
SAN RAFAEL CHANNEL

USACE File: 2013-00422N
Loch Lomond Marina
Maintenance Dredging

Sheet 3 of 6
April 2014

LOCH LOMOND MARINA 2014 MAINTENANCE DREDGING
ENTRANCE CHANNEL

NOBLE
CONSULTANTS, INC.



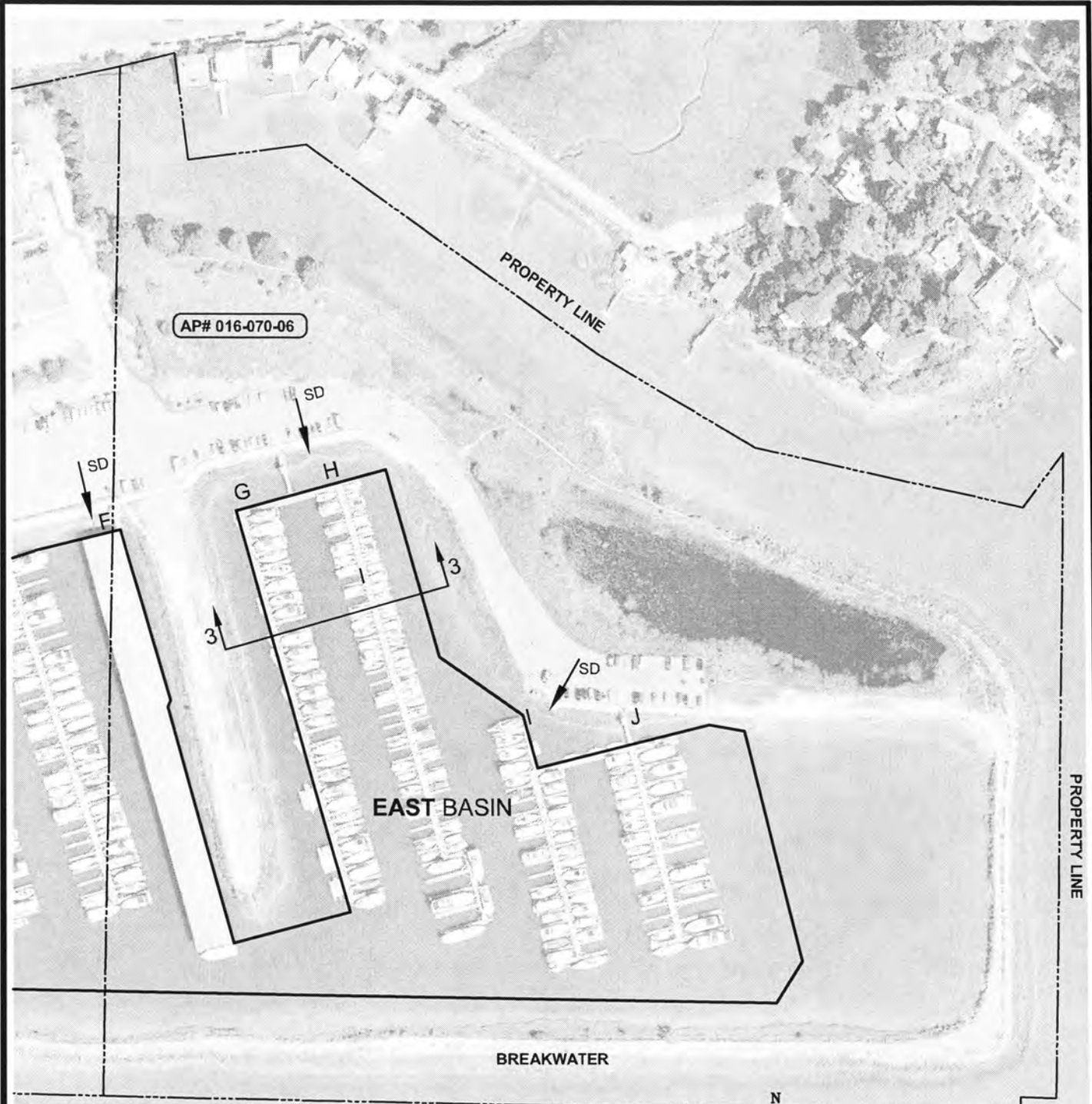
USACE File: 2013-00422N
 Loch Lomond Marina
 Maintenance Dredging
 Sheet 4 of 6
 April 2014

SEE FIGURE 1 FOR NOTES.

LOCH LOMOND MARINA 2014 MAINTENANCE DREDGING
 WEST BASIN

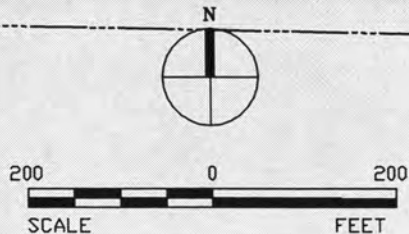


Figure 3



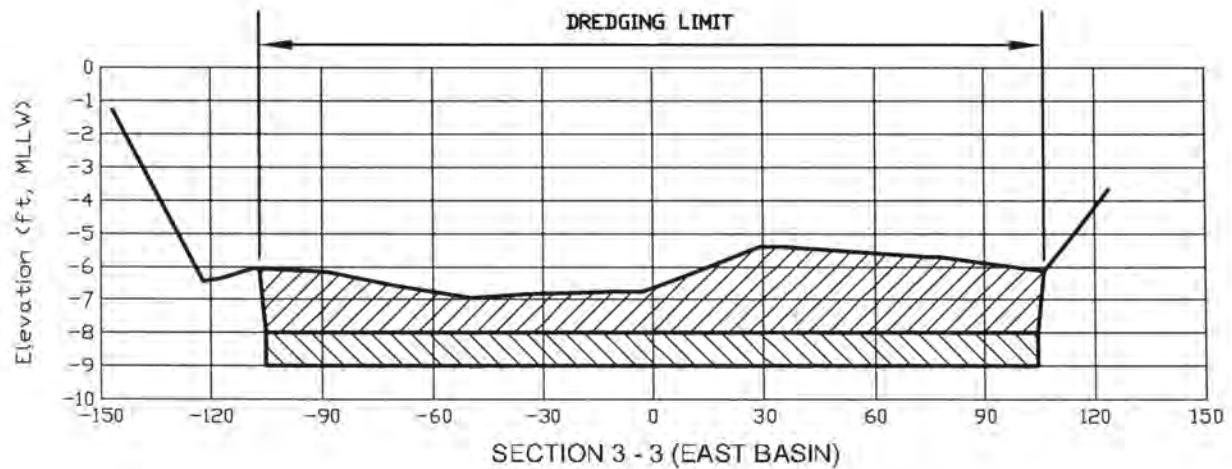
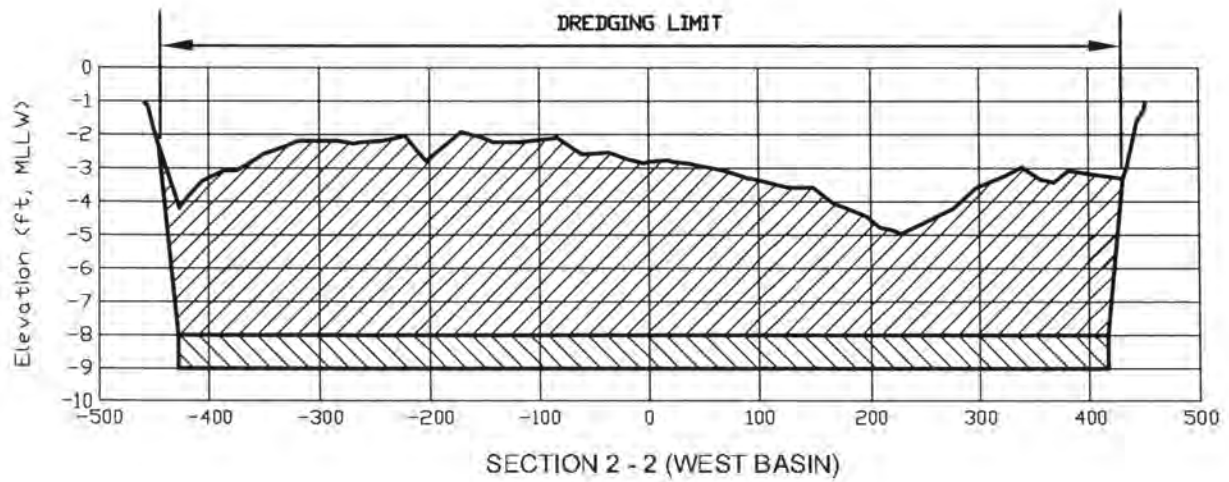
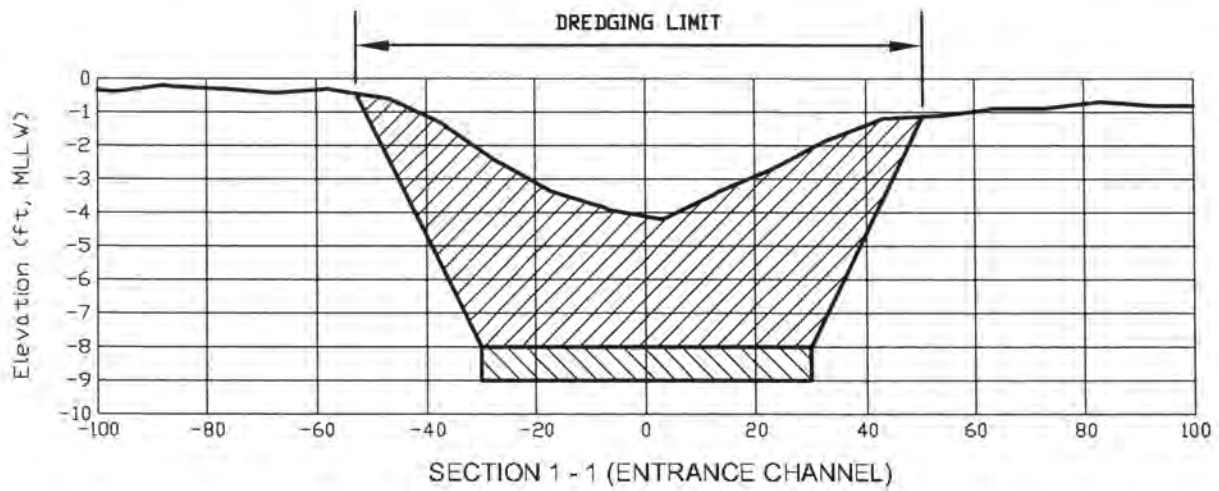
USACE File: 2013-00422N
 Loch Lomond Marina
 Maintenance Dredging


Sheet 5 of 6
 April 2014



LOCH LOMOND MARINA 2014 MAINTENANCE DREDGING
 EAST BASIN





-  DESIGN DEPTH
-  1' OVER-DEPTH

LOCH LOMOND MARINA 2014 MAINTENANCE
TYPICAL SECTIONS



USACE File: 2013-00422N
Loch Lomond Marina
Maintenance Dredging

Sheet 6 of 6
April 2014