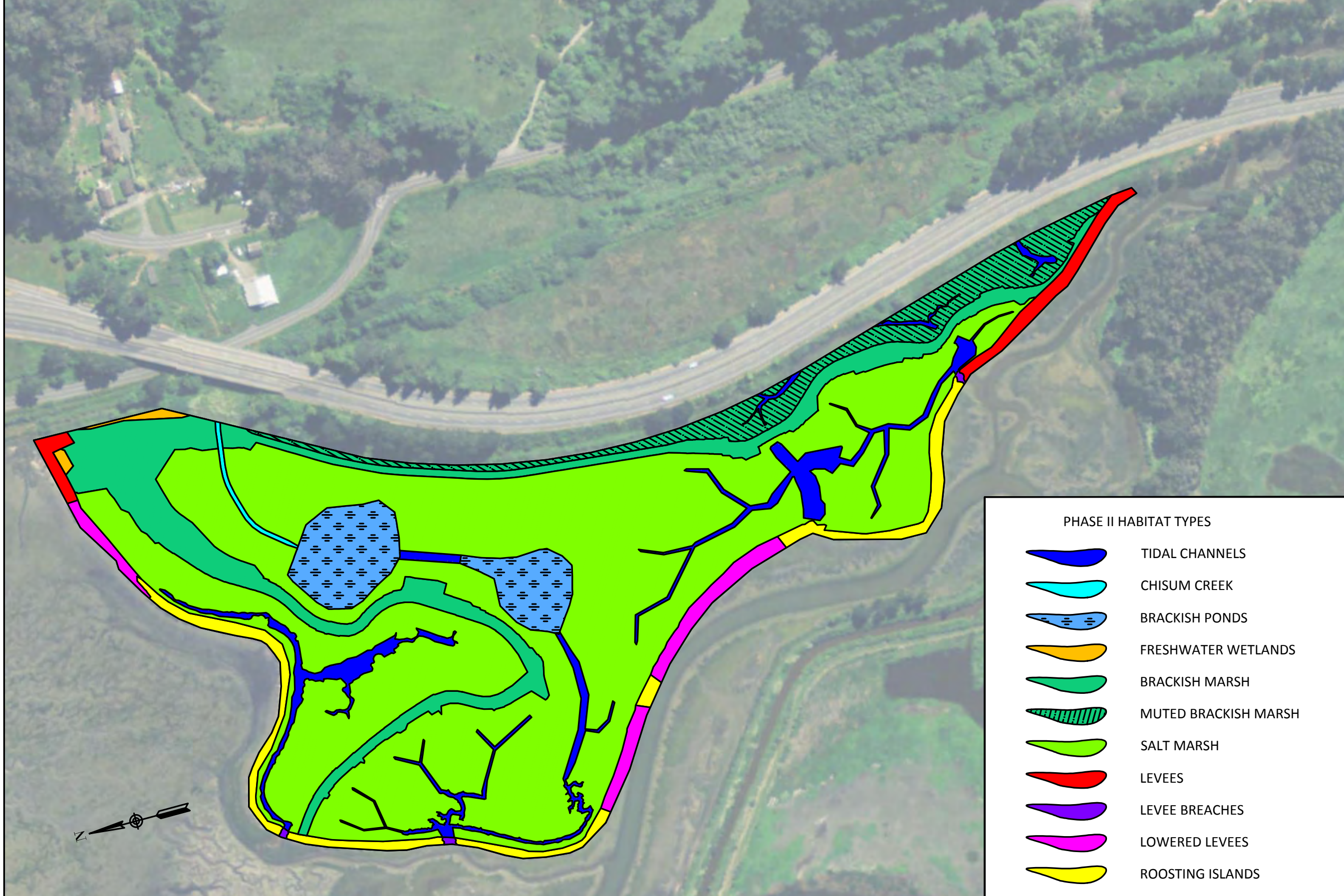


CREATE MUTED TIDE IN CALTRANS BASIN (MAX WATER SURFACE 3.5 FEET) BY INSTALLING CULVERT THROUGH TIDAL RIDGE EQUIPPED WITH FISH-FRIENDLY FLAP GATE

PLACE FILL ON MARSH PLAIN IN NORTH, SOUTH, AND MIDDLE BASINS BETWEEN TIDAL CHANNELS AND TIDAL RIDGES TO ELEVATION 6.0 TO 8.4 FEET. PROPOSED PHASE II TOPOGRAPHY SHOWN ON SHEET 12.

LOWER EXISTING LEVEE SURFACE TO ELEVATION 7.5 TO 8.0 FEET AS INDICATED ON SHEET 12.

U.S. FISH AND WILDLIFE SERVICE COASTAL PROGRAM AT HUMBOLDT BAY ARCATA FISH AND WILDLIFE OFFICE ARCATA, CA 95519 707-822-7201	
PREPARED FOR: HUMBOLDT BAY NATIONAL WILDLIFE REFUGE COMPLEX LOLETA, CA	
WHITE SLOUGH WETLAND ENHANCEMENT PROJECT 50% CONCEPT PLANS (NOT FOR CONSTRUCTION)	
WEST WHITE SLOUGH PROJECT AREA PHASE II: PROJECT ELEMENTS	
NOTES: (1) IMAGE SOURCE: 2012 NRCS NATIONAL AERIAL IMAGERY PROGRAM (NAIP). (2) CONTOUR INTERVAL 1 FOOT - ALL ELEVATION REFERENCE TO NAVD 1988 DATUM. (3) TOPOGRAPHY WITHIN WEST WHITE SLOUGH UNIT BASED ON USFWS SURVEYS. TOPOGRAPHY FOR OTHER AREAS BASED ON CALIFORNIA COASTAL CONSERVANCY LIDAR.	
DESIGNED BY: DVD/CCS	DRAWN BY: DVD/CCS
APPROVED BY: CCS	DATE: 1/22/2015
SHEET NUMBER: 10	
SCALE: 	



PHASE II HABITAT TYPES

	TIDAL CHANNELS
	CHISUM CREEK
	BRACKISH PONDS
	FRESHWATER WETLANDS
	BRACKISH MARSH
	MUTED BRACKISH MARSH
	SALT MARSH
	LEVEES
	LEVEE BREACHES
	LOWERED LEVEES
	ROOSTING ISLANDS

U.S. FISH AND WILDLIFE SERVICE
 COASTAL PROGRAM
 AT HUMBOLDT BAY
 ARCATA FISH AND WILDLIFE OFFICE
 ARCATA, CA 95519
 707-822-7201

PREPARED FOR:
 HUMBOLDT BAY
 NATIONAL WILDLIFE
 REFUGE COMPLEX
 LOLETA, CA



WHITE SLOUGH WETLAND ENHANCEMENT PROJECT
 50% CONCEPT PLANS (NOT FOR CONSTRUCTION)

WEST WHITE SLOUGH PROJECT AREA
 PHASE II: PROPOSED HABITAT TYPES

NOTES:

DESIGNED BY: DVD/CCS	DRAWN BY: DVD/CCS	APPROVED BY: CCS	DATE: 1/22/2015	SHEET NUMBER: 12
-------------------------	----------------------	---------------------	--------------------	---------------------

SCALE: 0 250'