



U.S. Army Corps
of Engineers
San Francisco District
Regulatory Division



Humboldt Bay (Arcata Bay, Entrance Bay, and South Bay); Aquaculture Occurs in Arcata Bay.



U.S. Army Corps
of Engineers
San Francisco District
Regulatory Division





The originally proposed Site 1 was 3.9 Acres. As revised, the site is 6.6 acres.



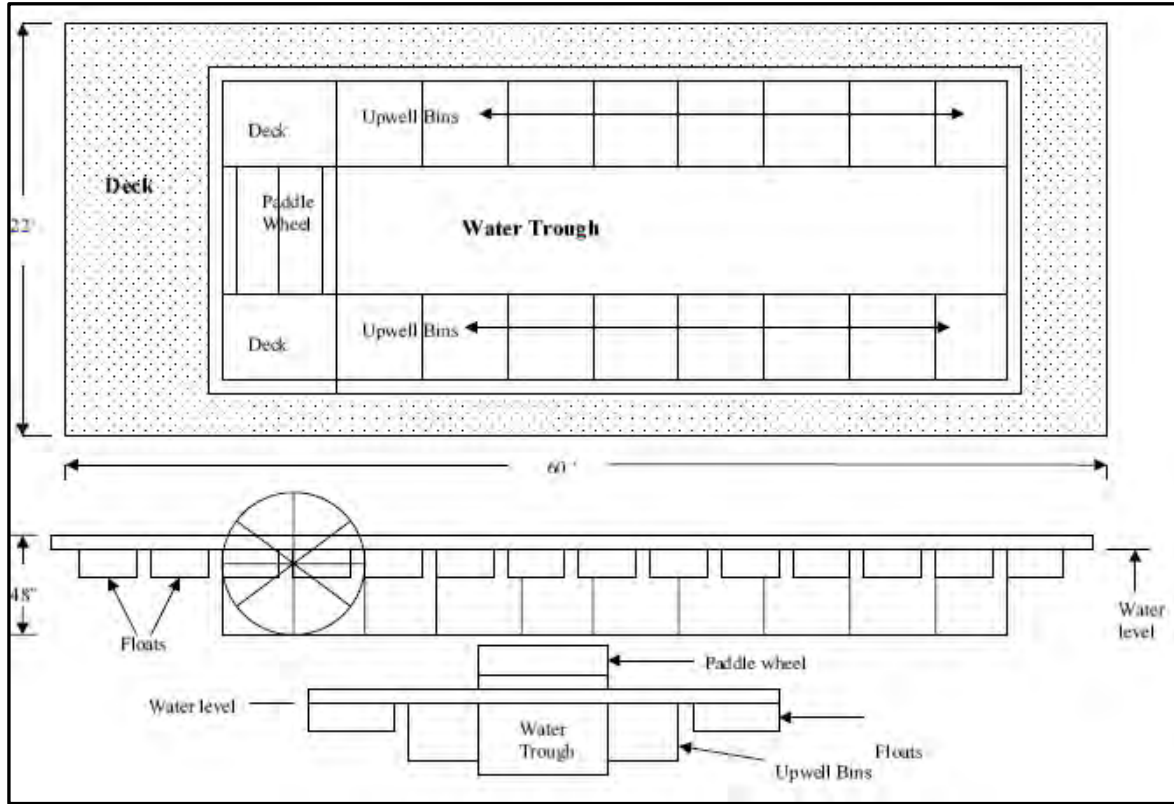
Site 2 is 8.6 Acres



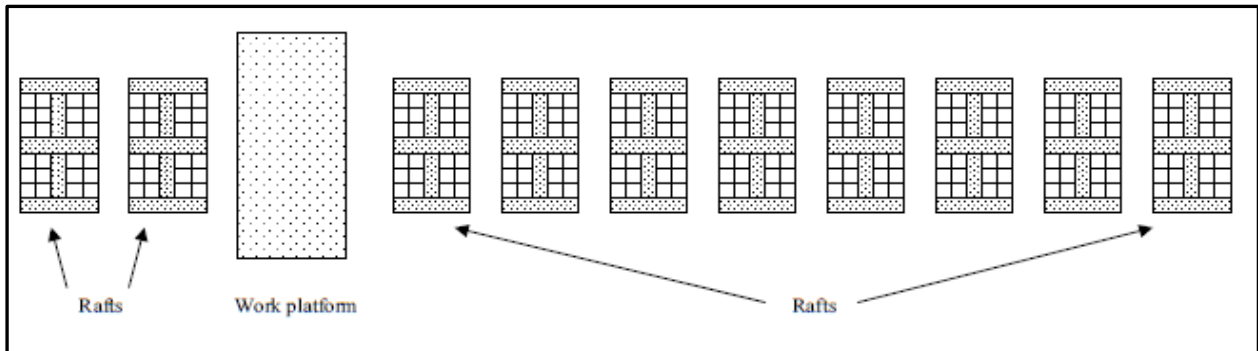
The originally proposed Site 3 was 8.7 Acres. As revised, the site is 6.0 acres.



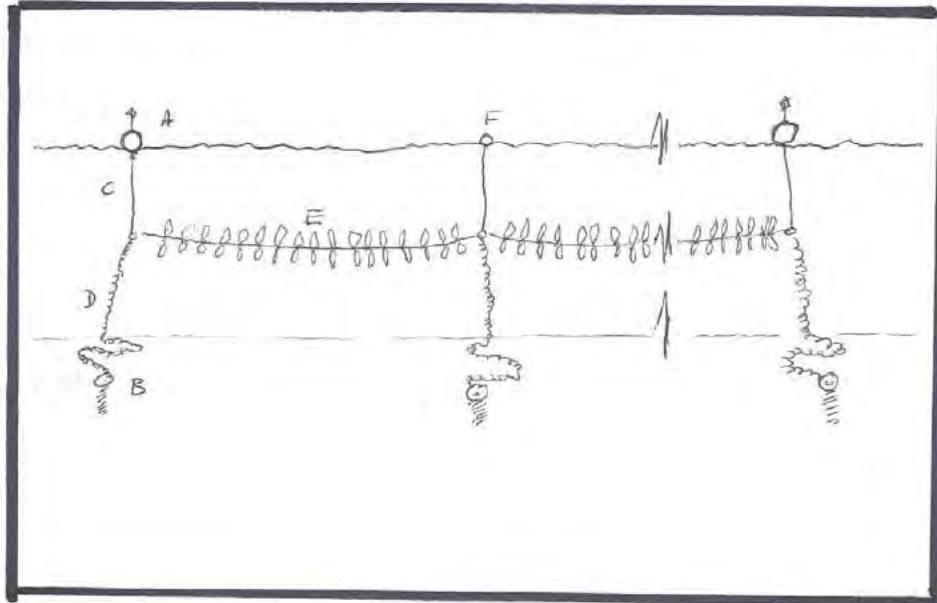
Floating Upwelling System (FLUPSY)



Nursery Rafts and a Work Platform



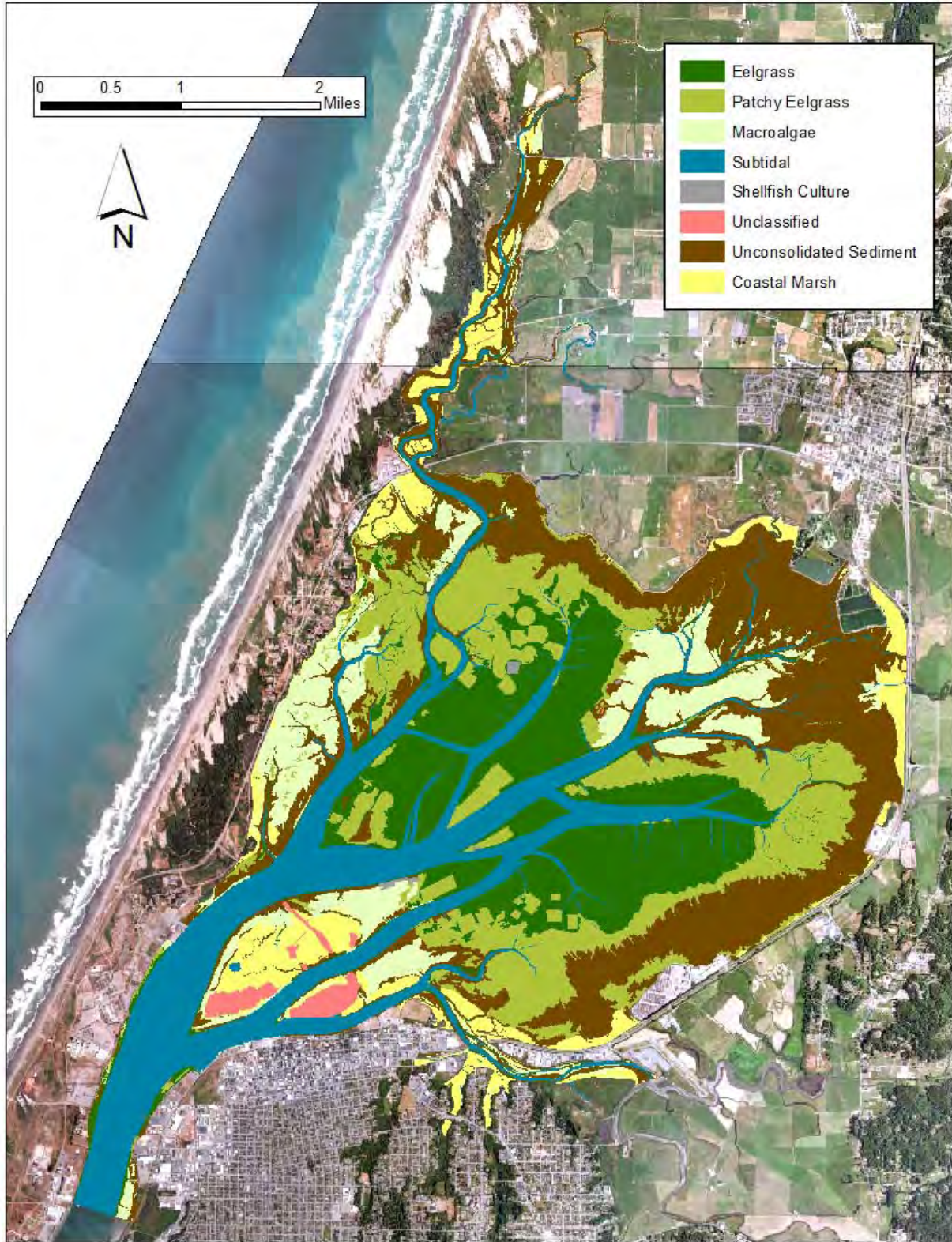
Macroalgae Longline Culture



- A. End marker
- B. Helical sand point mooring
- C. 1/2" line leader attached by stainless steel welded ring and thimble
- D. 7/16" galvanized chain rode
- E. Three stranded culture line
- F. Intermediate floats and mooring assemblies occur at 100' spacings until the line terminates



U.S. Army Corps
of Engineers
San Francisco District
Regulatory Division



Arcata Bay and Arcata Bay Habitats