



Stonebridge Project Site
 Woodbridge Preserve



Figure 2 Aerial Photograph of the Stonebridge Road Project Site
Santa Rosa, California

Monk & Associates
 Environmental Consultants
 11-08 Saranap Avenue, Suite Q
 Walnut Creek, California 94595
 (925) 947-4867

Aerial Photograph Source: ESRI
 Map Preparation Date: March 5, 2019



Monk & Associates
 Environmental Consultants
 1136 Saranap Avenue, Suite Q
 Walnut Creek, California 94595
 (925) 947-4867

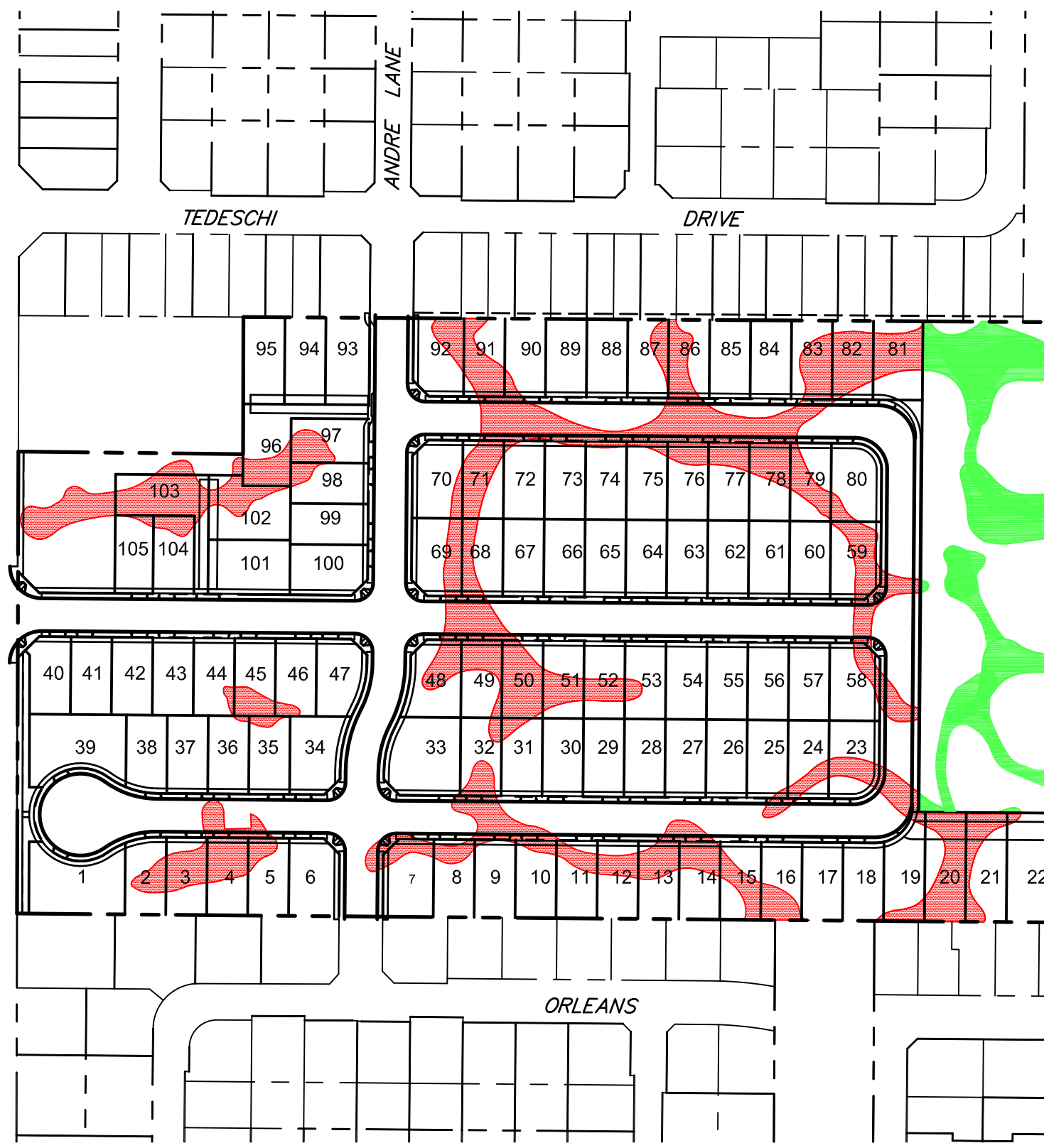
Figure 1 2220 Fulton Road Project Site
 Location Map
 Santa Rosa, California

38.485319 -122.766168
 Section: 5; T7N R8W
 7.5-Minute Sebastopol quadrangle
 Aerial Photograph Source: ESRI
 Map Preparation Date: February 21, 2019

S:\SDSK\PROJ17-114\DWG\Wetland Alternatives\PROPOSED PROJECT 11x17.dwg, 3/4/2019 11:18:18 AM

ROAD

FULTON



LEGEND

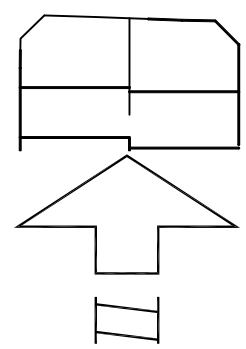
- IMPACTED WETLANDS (2.65 ACRES) SEE FOOTNOTE 1
- FINAL WETLANDS IN PRESERVE (5.42 ACRES)

PROJECT DATA

NUMBER OF RESIDENTIAL LOTS – 105
 DEVELOPMENT AREA – 14.6 ACRES
 PRESERVE AREA – 14.0 ACRES
 TOTAL SITE AREA 28.6 ACRES

FOOTNOTE 1: THE 2.65 ACRES OF IMPACTED WETLANDS INCLUDES 2.52 ACRES ON THE PROJECT SITE AND 0.13 ACRES ON THE PRESERVE TO ENHANCE THE FUNCTIONS AND SERVICES OF PRESERVE WETLANDS. NO OCCUPIED BURKE'S POOLS WOULD BE AFFECTED. SEE REPORT.

Figure 3



SCALE: 1"=150'



CIVIL DESIGN CONSULTANTS, INC.
 2500 Range Avenue, Suite 204
 Santa Rosa, CA 95403
 (707) 545-4850

ALTERNATIVE ANALYSIS – PROPOSED PROJECT
 STONEBRIDGE SUBDIVISION
 SANTA ROSA, CALIFORNIA

FEBRUARY 2019
 JOB NO. 17-114
 SHEET NO. 1
 OF 1 SHEET