



Figure 1

County of San Mateo
Maintenance Area

Hydrologic Features

- Major Creek
- Other Creeks and Drainages
- Lake / Pond
- Ocean / Bay

Transportation

- Highway / Major Road
- Airport

Administrative Areas

- County Park
- Incorporated City
- Unincorporated Area

Physical and Regulatory Boundaries

- Bayside / Coastside Watershed Boundary
- Coastal Development Zone Boundary
- Coverage Area of Detailed Figures

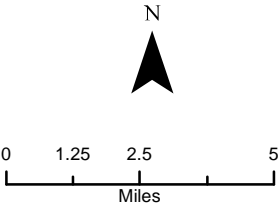




Figure 2

North Bayside of
San Mateo County
Maintenance Area

Hydrologic Features

- Major Creek
- Other Creeks and Drainages
- Lake / Pond
- Ocean / Bay

Administrative Areas

- County Park
- Colma Incorporated City
- Montara Unincorporated Area

Physical and Regulatory Boundaries

- Bayside / Coastsides Watershed Boundary
- Coastal Development Zone Boundary

Transportation

- Highway / Major Road
- Street
- Airport



C:\Users\GIS\Documents\ArcGIS\PROJECTS\5011_SMCCountySMP\mxd\Figure_1-X_MaintAreaMaps_rev.mxd RH 2/13/2018

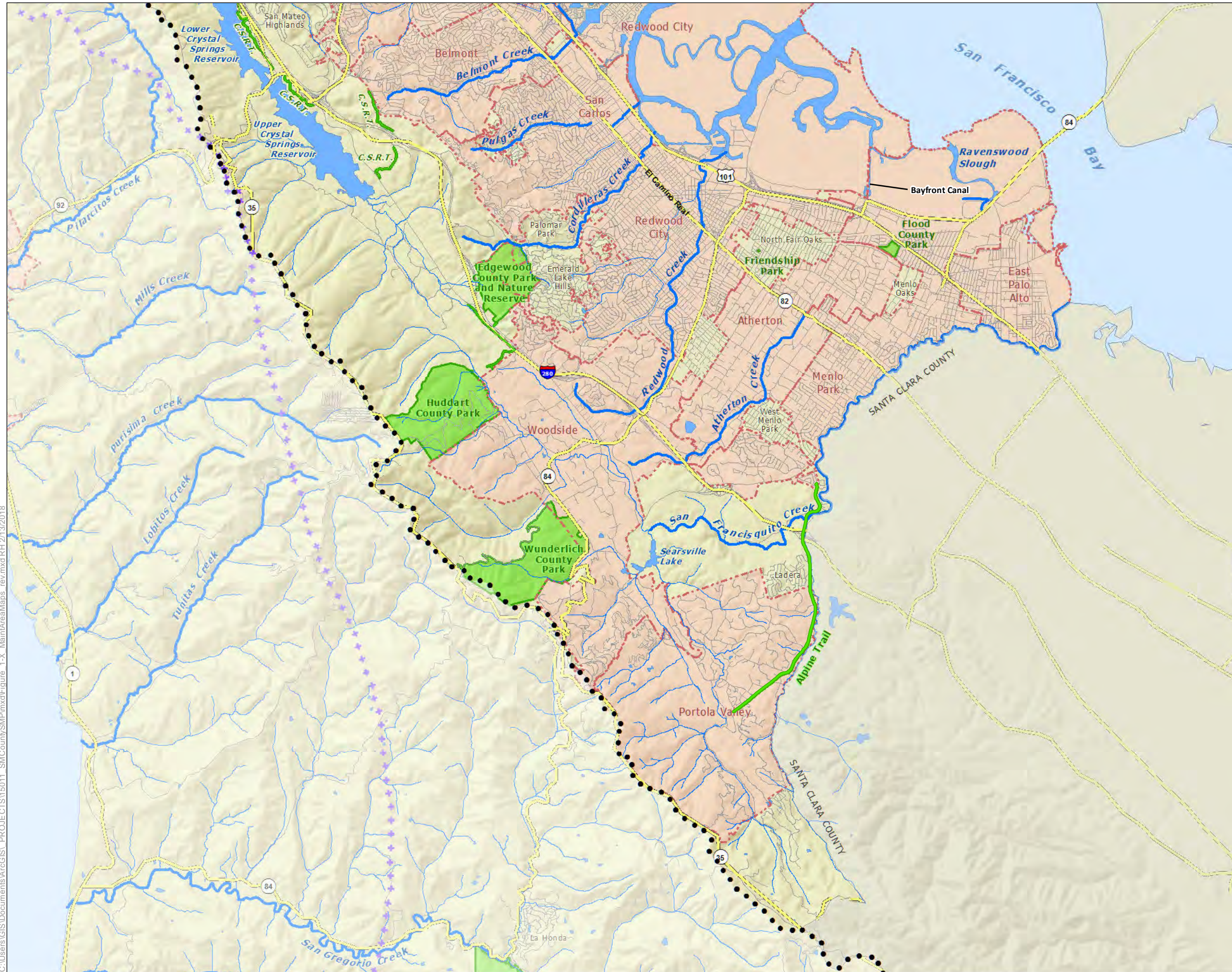


Figure 3

South Bay Side of San Mateo County Maintenance Area

Hydrologic Features

- Major Creek
- Other Creeks and Drainages
- Lake / Pond
- Ocean / Bay

Administrative Areas

- County Park
- Colma Incorporated City
- Montara Unincorporated Area

Physical and Regulatory Boundaries

- Bayside / Coastsides Watershed Boundary
- Coastal Development Zone Boundary

Transportation

- Highway / Major Road
- Street
- Airport





Figure 4

North Coast Side of San Mateo County Maintenance Area

Hydrologic Features

- Major Creek
- Other Creeks and Drainages
- Lake / Pond
- Ocean / Bay

Administrative Areas

- County Park
- Colma Incorporated City
- Montara Unincorporated Area

Physical and Regulatory Boundaries

- Bayside / Coastsides Watershed Boundary
- Coastal Development Zone Boundary

Transportation

- Highway / Major Road
- Street
- Airport



0 1 2 4 Miles

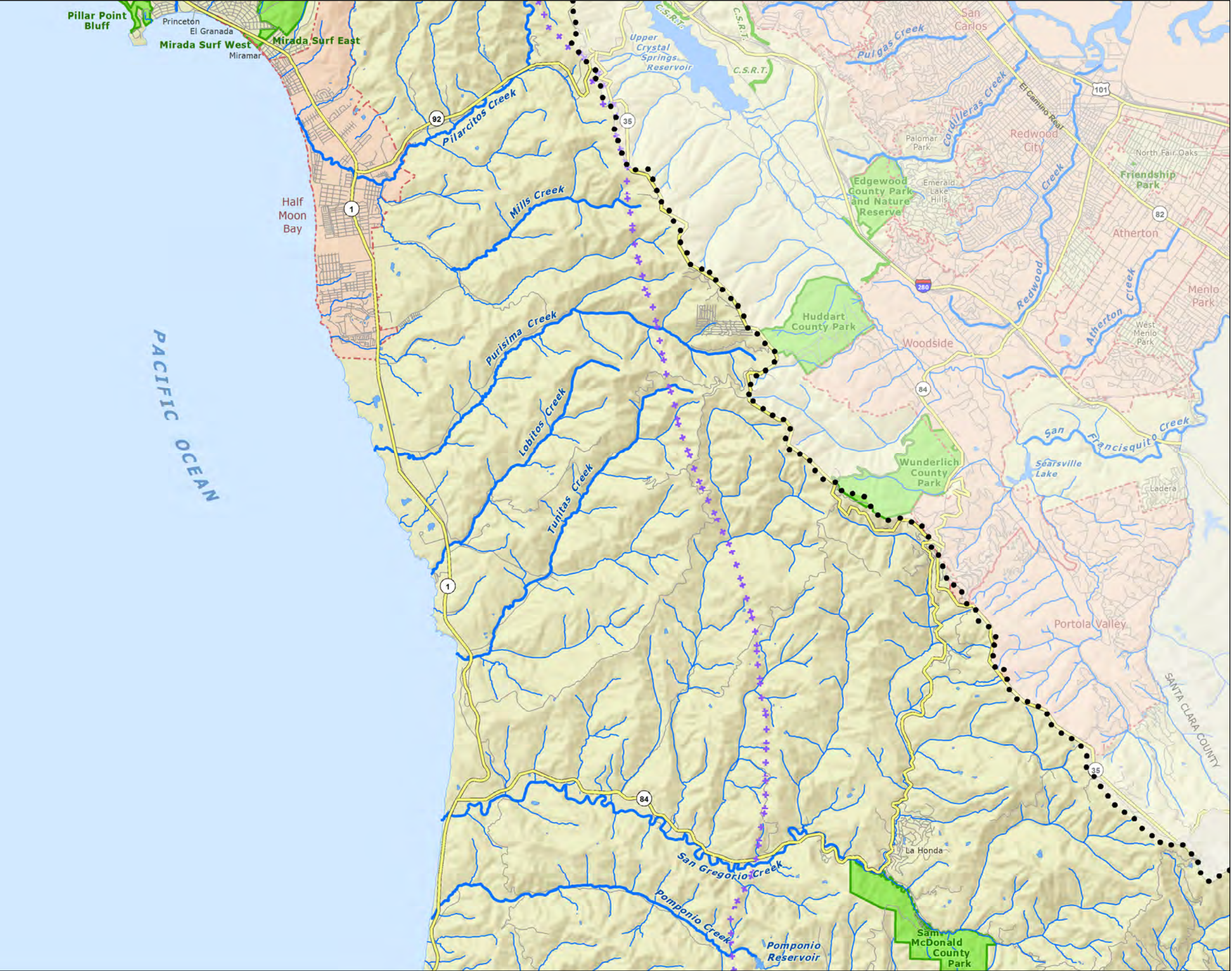


Figure 5

**Central Coastside of
San Mateo County
Maintenance Area**

Hydrologic Features

- Major Creek
- Other Creeks and Drainages
- Lake / Pond
- Ocean / Bay

Administrative Areas

- County Park
- Incorporated City
- Unincorporated Area

Physical and Regulatory Boundaries

- Bayside / Coastside Watershed Boundary
- Coastal Development Zone Boundary

Transportation

- Highway / Major Road
- Street
- Airport



0 1 2 4 Miles

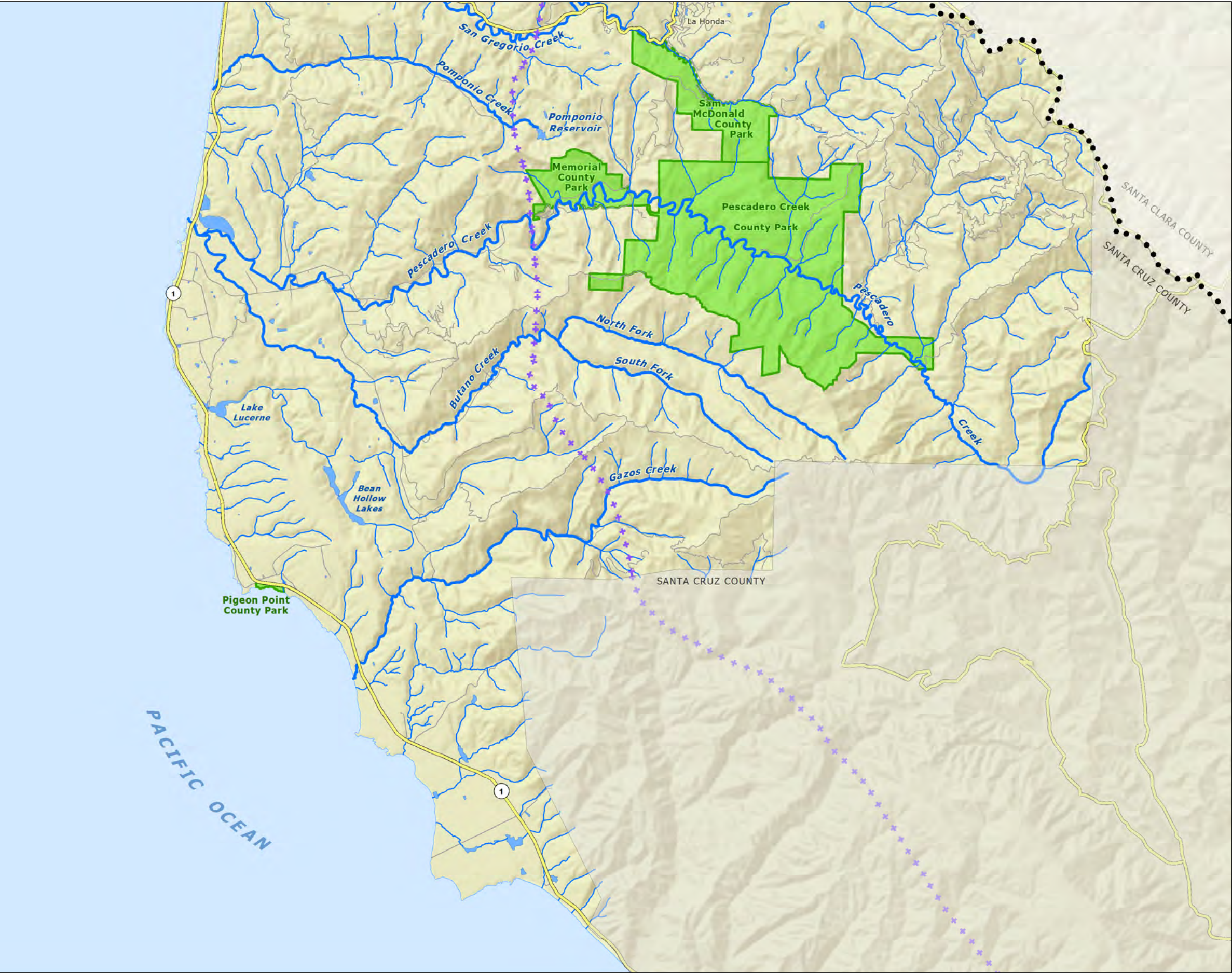


Figure 6

**South Coastside of
San Mateo County
Maintenance Area**

Hydrologic Features

- Major Creek
- Other Creeks and Drainages
- Lake / Pond
- Ocean / Bay

Administrative Areas

- County Park
- Colma Incorporated City
- Montara Unincorporated Area

Physical and Regulatory Boundaries

- Bayside / Coastside Watershed Boundary
- Coastal Development Zone Boundary

Transportation

- Highway / Major Road
- Street
- Airport

N

0 1 2 4 Miles



Photo 1. Pescadero Creek at the upstream side of Pescadero Creek Road bridge near Cloverdale Road. (April 2017)



Photo 2. Gazos Creek in Pescadero. Photo shows a recent slip-out that occurred along Gazos Creek Road. (April 2017)



Photo 3. LID ditch along Farallone Avenue in Montara (May 2015)



Photo 4. Earthen ditch adjacent to Cloverdale Road in Pescadero. (April 2017)



Photo 5. Belmont Creek downstream from Old County Road in Belmont, an example of a modified earthen channel (May 2015)



Photo 6. Upstream side of George Street bridge where substantial sediment accumulation has occurred and is blocking the culvert (April 2017)



Photo 7. A concrete box culvert section of San Mateo Creek near Crystal Springs Road near its intersection with Polhemus Road (May 2017)



Photo 8. Culvert near George Street bridge that drains to Montara Creek. (April 2017)



Photo 1. Deteriorated corrugated metal pipe (CMP) culvert located at Pigeon Point Road that requires replacement. (March 2007)



Photo 2. Deteriorated CMP culvert on Alpine Creek that requires replacement. (August 2016)



Photo 3. George Street bridge. Sediment and vegetation removal needed in the future. Bridge could also benefit from paint removal. (December 2010)



Photo 4. Scouring evident at the base of Cloverdale Road bridge. Erosion protection improvements are needed.



Photo 5. Sediment removal needed at the San Bruno Creek and Walnut Street crossing. (February 2018)



Photo 6. Sediment with vegetation growing on top of it in Belmont Creek at Old County Road. (September 2011)



Photo 7. Paved ditch downstream of Farallone Avenue and Kanoff Street in Montara. Ditch is routinely maintained with a Vac-Con truck. (May 2015)



Photo 8. LID enhancements consisting of turf reinforcement mat, native grass sod, and rock check-dams that were recently installed along Farallone Avenue in Montara. (May 2015)



Photo 9. Concrete box culvert at Cloverdale Road and Butano Cutoff Road in Pescadero. Potential need for sediment and vegetation removal in the future. (May 2015)



Photo 10. Unpaved ditch along Cloverdale Road in Pescadero. Potential need for sediment and vegetation removal in the future. (May 2015)



Photo 11. Bioretention swale along Carlos Street in Moss Beach that requires periodic vegetation removal, light sediment clearing, and planting. (March 2018)



Photo 12. Bioretention swale at the Fitzgerald Marine Reserve parking lot, which requires periodic vegetation removal, light sediment clearing and revegetation. (January 2016)



Photo 1. Example slope failure above unnamed tributary to Alpine Creek. This site was addressed in the County's 2017 emergency permit application. (March 2017)



Photo 2. Bank failure along Lower Bear Gulch Road and adjacent to Clear Creek, an intermittent tributary to San Gregorio Creek. (February 2016)

Figure 9. Example Creek Bank Stabilization Sites



Photo 3. Example slope failure along Gazos Creek and Gazos Creek Road. This site was addressed in the County's 2017 emergency permit application. (March 2017)



Photo 4. Completed bank stabilization site along Gazos Creek and Gazos Creek Road.

**Figure 9. Example Creek
Bank Stabilization Sites**



Photo 1. Vegetation that has recently been weed whacked along Stage Road in Pescadero. (May 2015)



Photo 2. Example area that underwent hazardous tree removal in La Honda Creek (near Entrada Way). Photo shows mass of soil and redwood roots in middle portion of channel. (May 2015)



Photo 3. Meadow near Hoffman Creek Trail in Pescadero Creek County Park that routinely gets mowed. (May 2015)



Photo 4. Towne Fire Road in Pescadero Creek County Park where fuel management activities occur. (May 2015)



Photo 5. Fuel management area in Quarry County Park in Half Moon Bay. (May 2015)



Photo 6. County staff conducting vegetation trimming and weed whacking activities along Weiler Ranch Trail in San Pedro Valley Park. (May 2015)