

| | | | | |
|--|--|--|--|--|
| <p>Paper Size 8.5" x 11" (ANSI A) 0 200 400 600 800 Feet Map Projection: Lambert Conformal Conic Horizontal Datum: North American 1983 Grid: NAD 1983 StatePlane California 1 FIPS 9401 Feet</p> | | | <p>Humboldt County Department of Public Works Manila State Route 255 Shared Use Path Project</p> <p>Vicinity Map</p> | <p>Job Number 11145210 Revision C Date 24 Oct 2018</p> |
| <p>© 2017. While every care has been taken to prepare this map, GHD makes no representations or warranties about its accuracy, reliability, completeness or suitability for any particular purpose and cannot accept liability and responsibility of any kind (whether in contract, tort or otherwise) for any expenses, losses, damages and/or costs (including indirect or consequential damage) which are or may be incurred by any party as a result of the map being inaccurate, incomplete or unsuitable in any way and for any reason. Data source: ESRI Street Map; NAIP aerial Im. Created by:ashows</p> | | | <p>718 Third Street Eureka CA 95501 USA T 707 443 8326 F 707 444 8330 E eureka@ghd.com W www.ghd.com</p> | |

Figure 1 – Vicinity Map

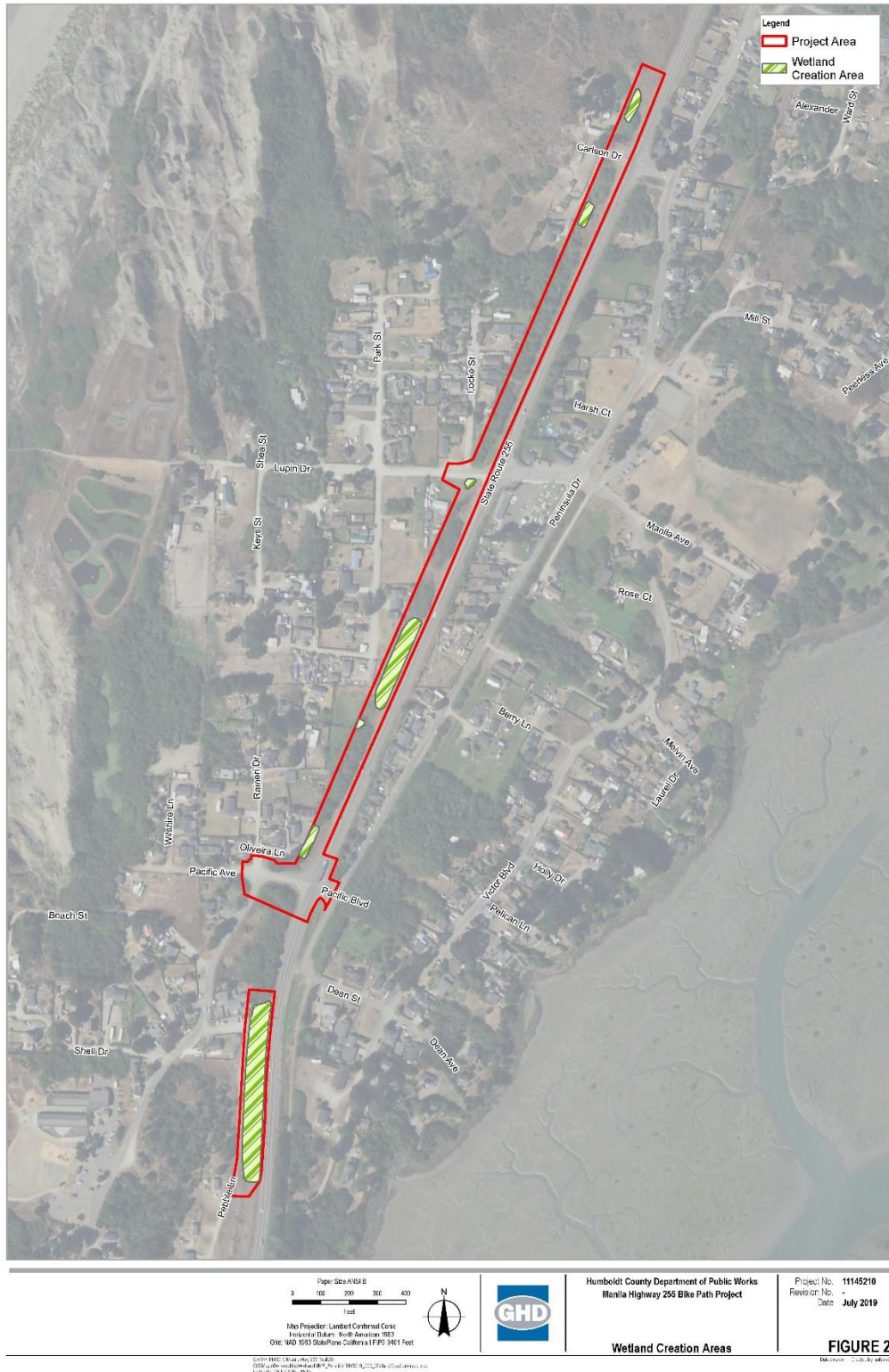


Figure 2 – Location of Wetland Creation Areas