

\\PDC\IT\GIS\Projects_3\PG&E\00103_20_Incise_Sausalito_Altis_EmergencyPrep\Wetland_Memo\Fig_1_Location.mxd User: 385669 Date: 8/10/2020

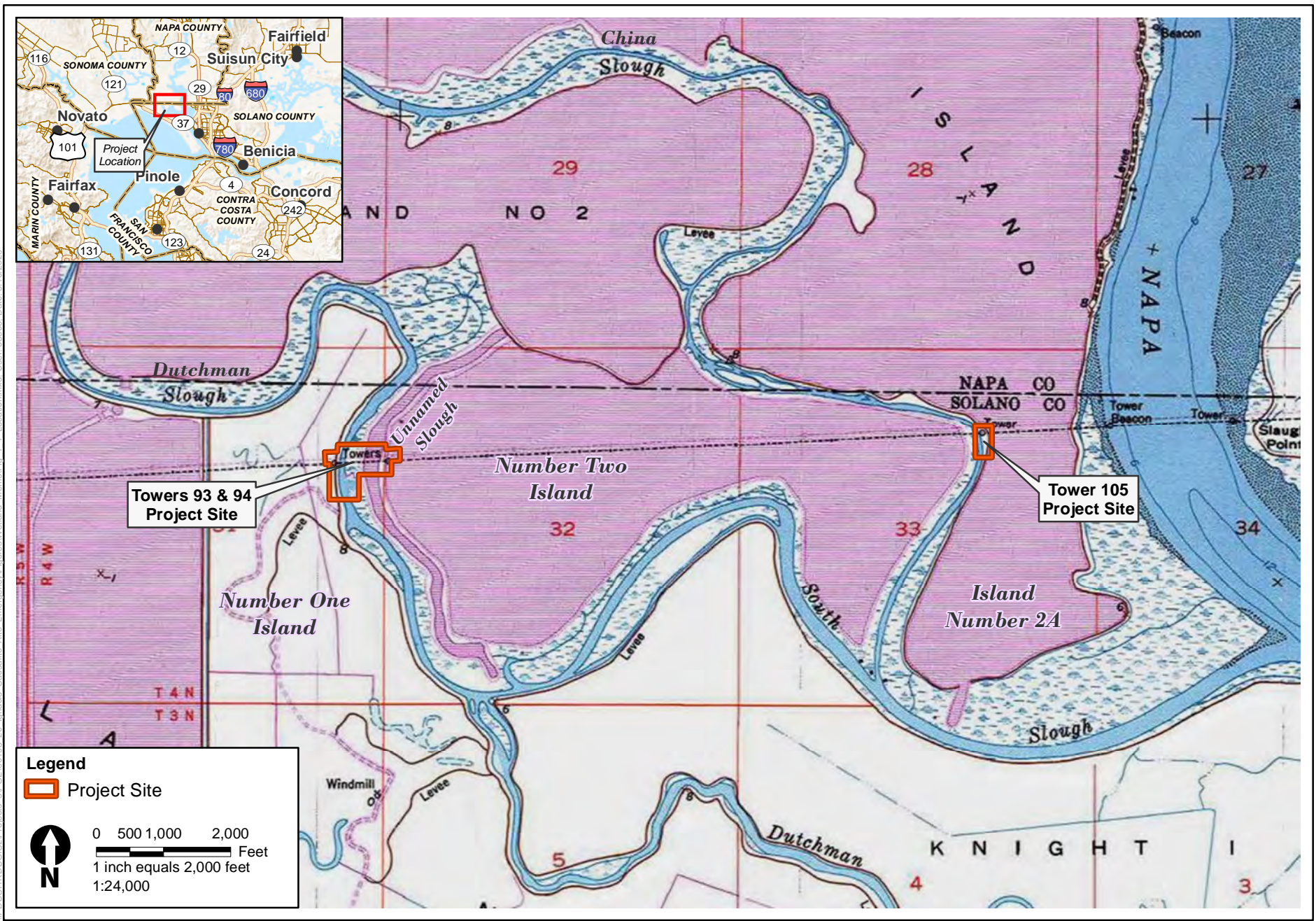
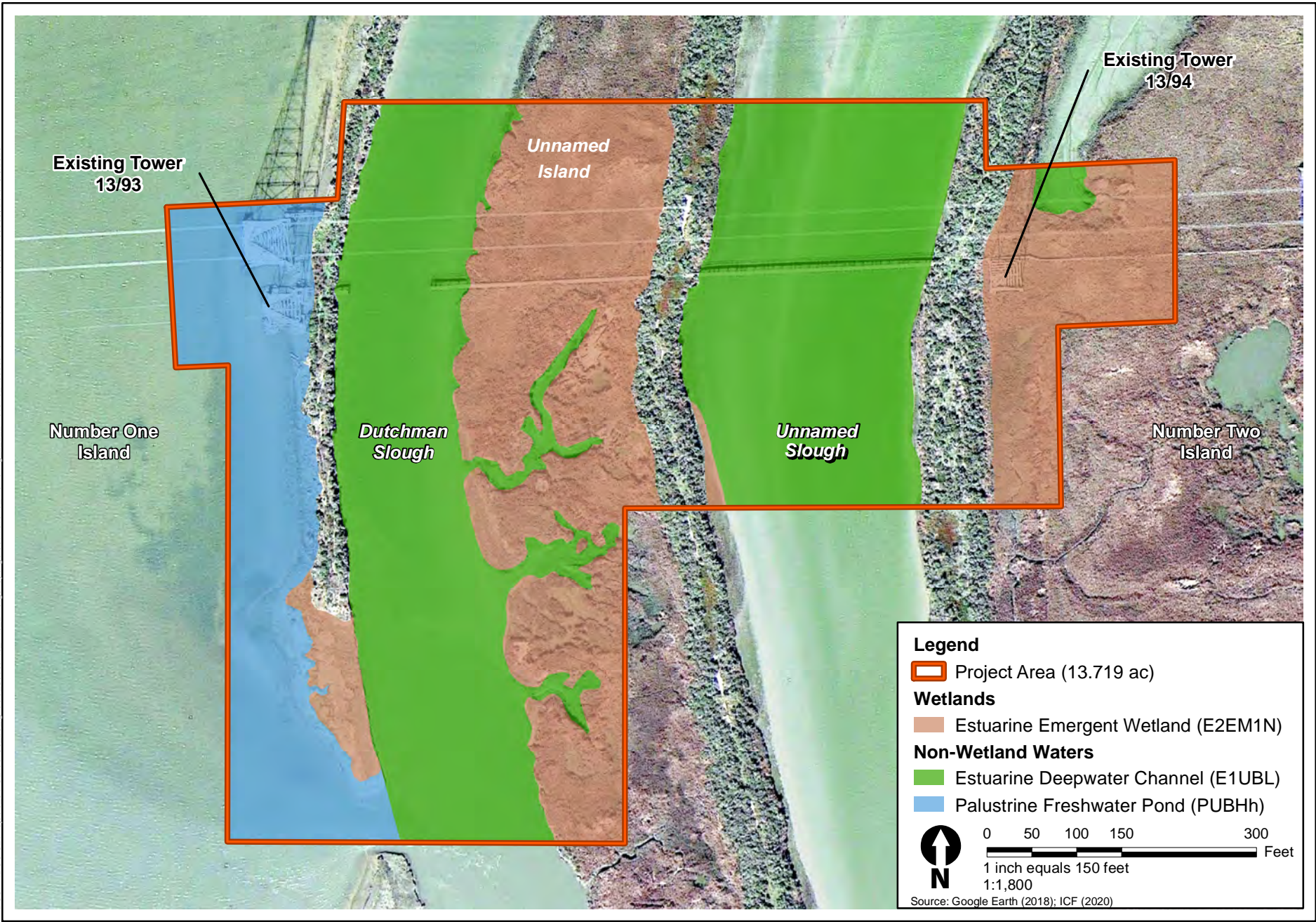


Figure 1
Project Location



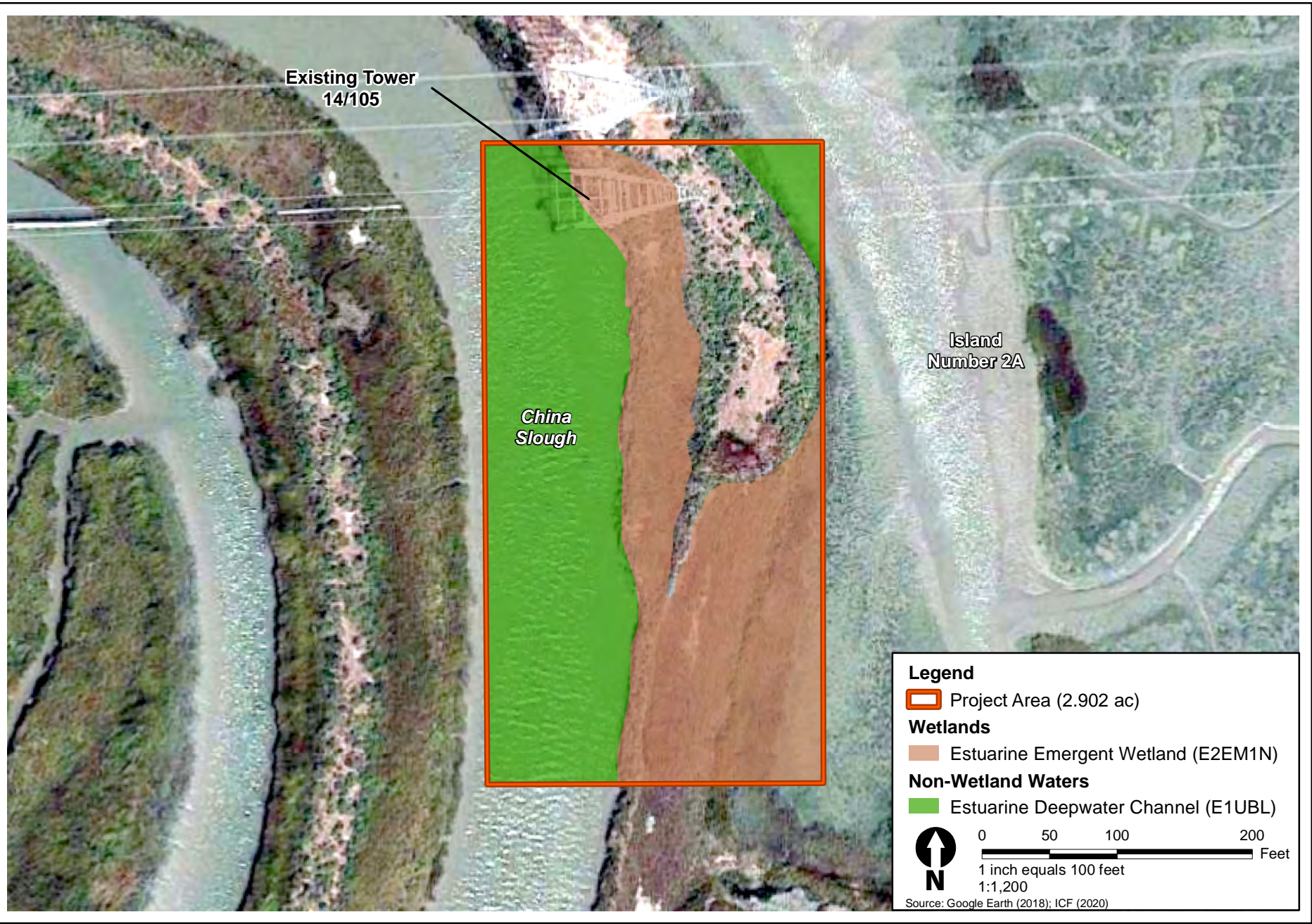
\\PDC\TRD\SIG\Projects_3\PE100103_20_Incels_Savanna_Alti_Empower\Figures\Wetland_Memo\Fig_2_Wetland_Assessment_20200720.mxd; User: 38858; Date: 8/6/2020



Note: Map depicts approximate extent of Waters of the United States and is not intended to be suitable for submission to U.S. Army Corps of Engineers for jurisdictional determination. All areas not mapped as wetland or non-wetland waters are upland grassland or ruderal.

Figure 2
Towers 93 and 94 Project Area

\\PDC\IT\GIS\Projects_3\PE100103_20_Incise_Sausalito_Alti_Emergency\Reports\Wetland_Memo\Fig_2_3_Tower105_Wetland_Assessment_20200721.mxd User: 38868 Date: 8/5/2020



Note: Map depicts approximate extent of Waters of the United States and is not intended to be suitable for submission to U.S. Army Corps of Engineers for jurisdictional determination. All areas not mapped as wetland or non-wetland waters are upland grassland or ruderal.

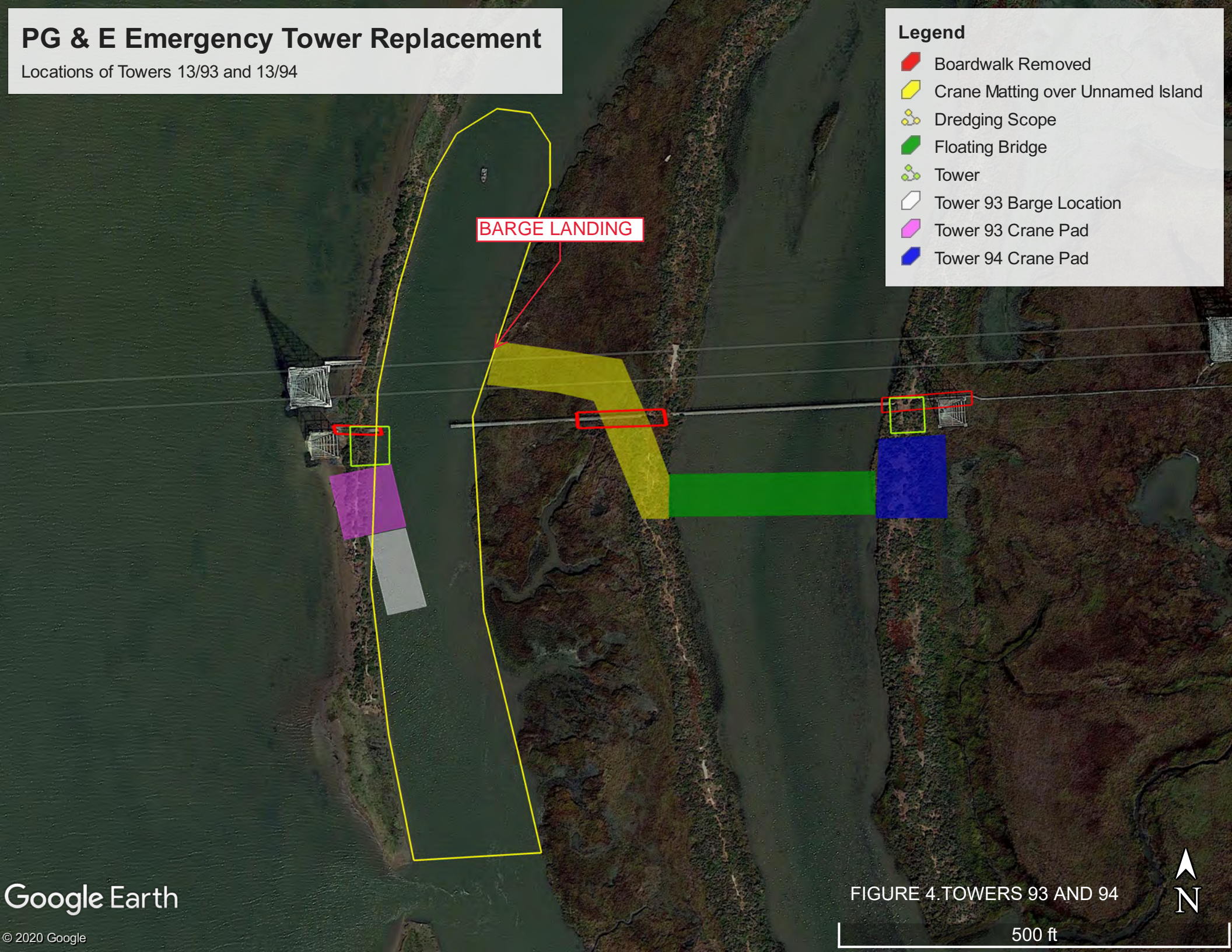
Figure 3
Tower 105 Project Area

PG & E Emergency Tower Replacement

Locations of Towers 13/93 and 13/94

Legend

- Boardwalk Removed
- Crane Matting over Unnamed Island
- Dredging Scope
- Floating Bridge
- Tower
- Tower 93 Barge Location
- Tower 93 Crane Pad
- Tower 94 Crane Pad



BARGE LANDING

FIGURE 4. TOWERS 93 AND 94




500 ft

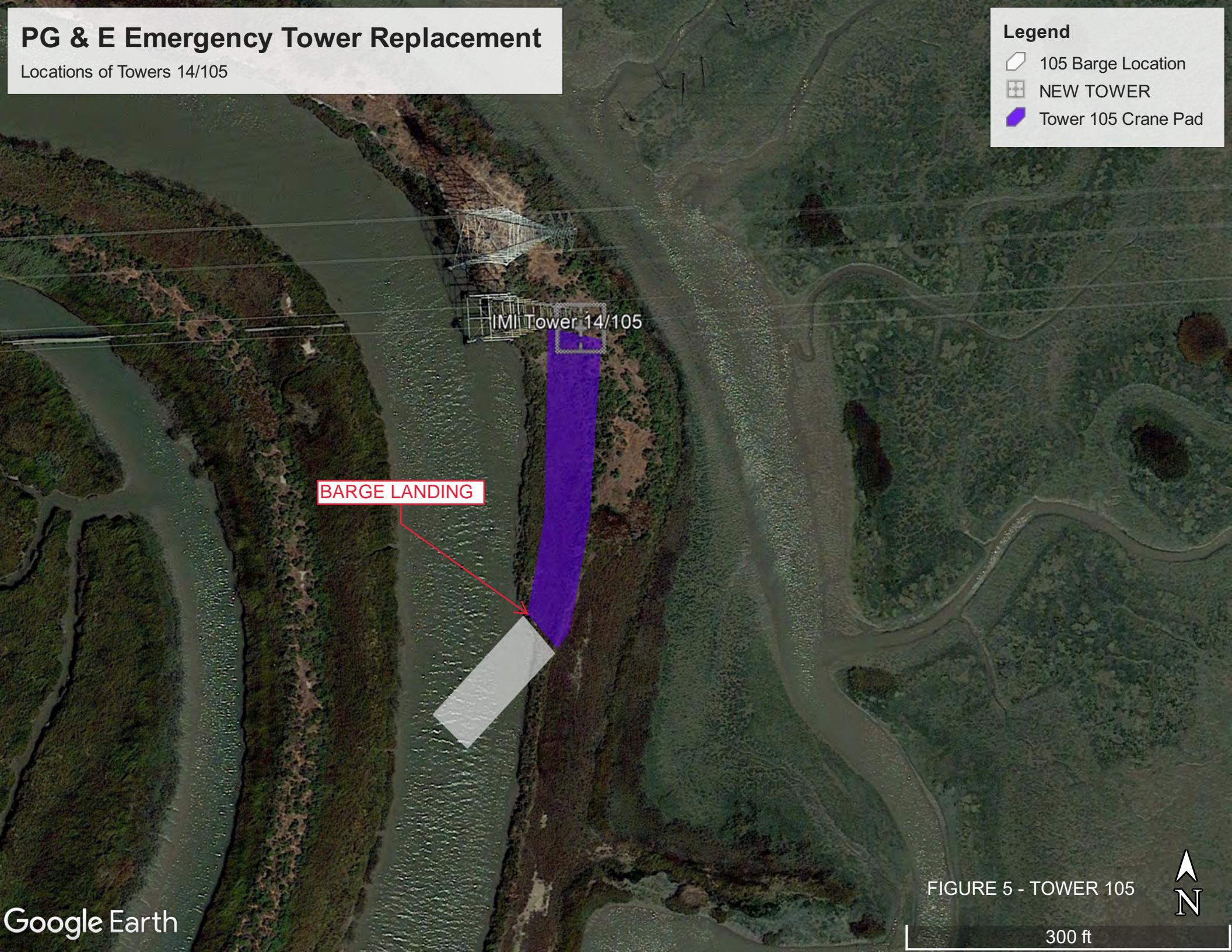


PG & E Emergency Tower Replacement

Locations of Towers 14/105

Legend

-  105 Barge Location
-  NEW TOWER
-  Tower 105 Crane Pad



BARGE LANDING

IMI Tower 14/105

FIGURE 5 - TOWER 105

300 ft

