

Sources: Esri, HERE, Garmin, USGS, Intermap, INCREMENT P, NRCan, Esri Japan, METI, Esri China (Hong Kong), Esri Korea, Esri (Thailand), NGCC, (c) OpenStreetMap contributors, and the GIS User Community

**Figure 1 Site and Vicinity Map -
South Bay Salt Pond Restoration Project, Eden Landing Ecological Reserve: Phase 2**

Project Area Existing Levees

Project Location: Sections 5, 6, 7, 8, 9, 16, 17, 18, 19, 20, 21, 28, 29, & 30 of T4S, R2W
& Sections 12, 13, 24, & 25 of T4S, R3W, Alameda County, CA

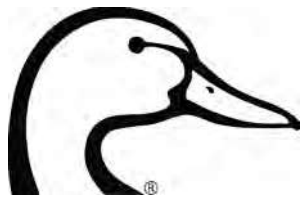
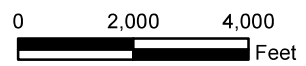


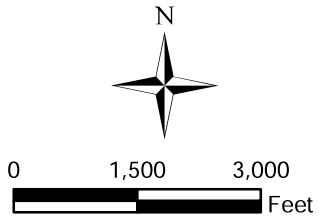


Figure 2 Aerial Photo -
 South Bay Salt Pond Restoration Project,
 Eden Landing Ecological Reserve: Phase 2



Project Area

Project Location: Sections 5, 6, 7, 8, 9, 16, 17, 18, 19, 20, 21, 28, 29, & 30 of T4S, R2W
 & Sections 12, 13, 24, & 25 of T4S, R3W, Alameda County, CA



Project Components

- Project Area
- Levee Improvements
- Levee Improvements Alternative Alignment
- Bayfront Levee Erosion Protection
- Levee Lowering
- Exterior Breaches
- Habitat Islands
- Internal Breaches
- Pilot Channels
- Pump Station Removal
- WCS Removal
- WCS Installation/Repair and Replacement
- WCS Rip Rap
- Habitat Transition Zones
- Foraging Mounds
- Large Wood Features
- Gravel Beach and Berm
- Power Pole Relocation
- Power Pole Removal
- Bay Trail
- Pedestrian/Bicycle Bridge
- Pond E6A Overflow Sill
- Cofferdam
- Temporary Haul Route
- OAC Temporary Access
- Temporary Dredge Lock
- Temporary Crane Pads

Existing Waters of the U.S./State

- Habitat Types**
- Diked Marsh (142.44 acres)
 - Ditch (9.25 acres)
 - Managed Pond (2,184.66 acres)
 - Managed Seasonal Wetland (50.61 acres)
 - San Francisco Bay (178.59 acres)
 - Slough (107.00 acres)
 - Tidal Marsh (359.53 acres)

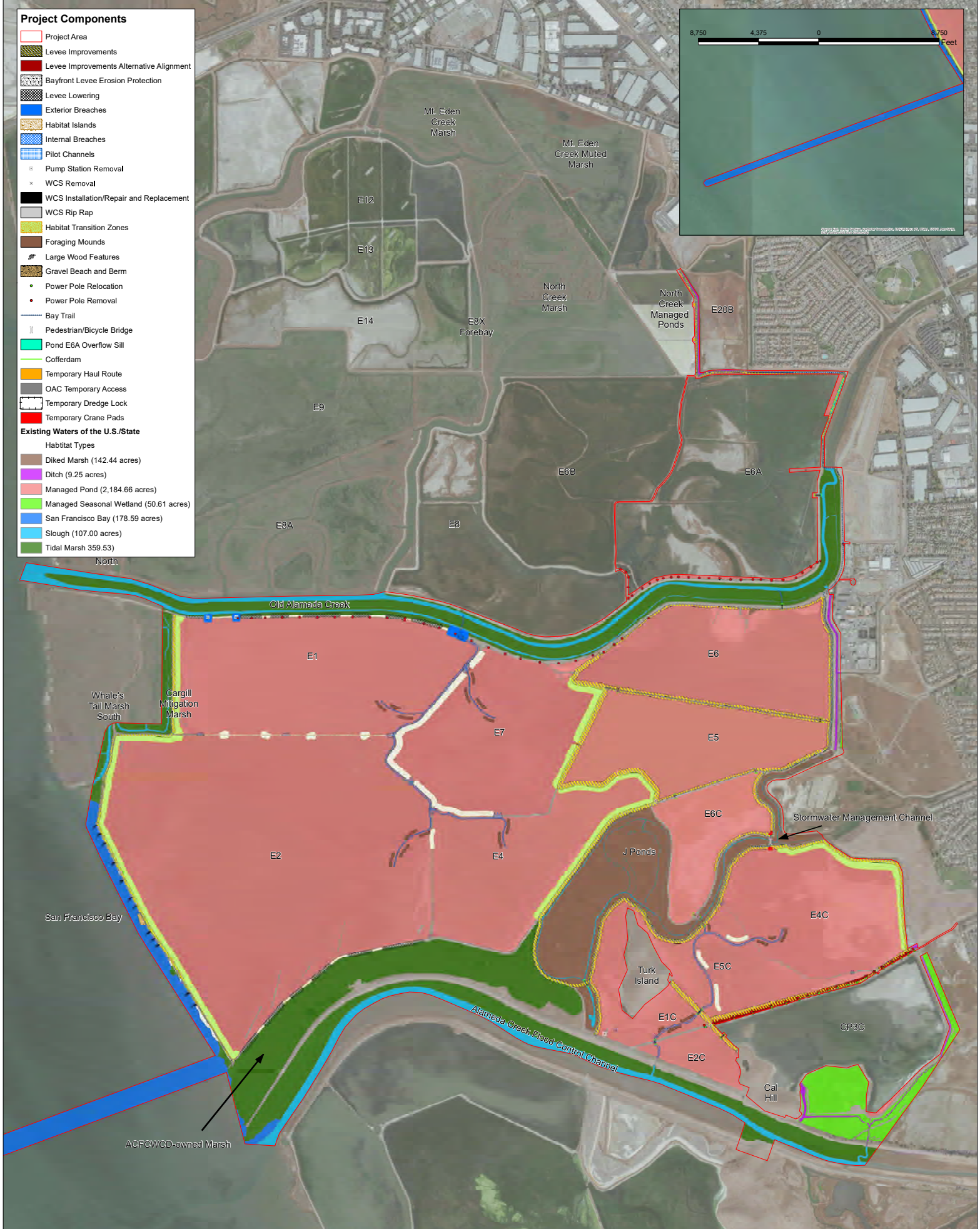


Figure 6 Project Components within Waters of the U.S./State - South Bay Salt Pond Restoration Project, Eden Landing Ecological Reserve: Phase 2

Prepared by: TRUCKS UNLIMITED
 Date of Initial Verification: 03/30/21
 Corps File Number: 1999-246270S
 Date of Map: 08/25/21

Project Location: Sections 5, 6, 7, 8, 9, 16, 17, 18, 19, 20, 21, 28, 29, & 30 of T4S, R2W & Sections 12, 13, 24, & 25 of T4S, R3W, Alameda County, CA

The boundaries and jurisdictional status of all waters shown on this map are verified by the U.S. Army Corps of Engineers.
 0 1,000 2,000 Feet
 1 inch = 550 feet



- Anticipated Post Construction Habitat**
- Project Area
 - Diked Marsh (146.01 acres)
 - Ditch (9.25 acres)
 - Managed Pond (802.44 acres)
 - Managed Seasonal Wetland (50.61 acres)
 - San Francisco Bay (178.46 acres)
 - Slough (119.64 acres)
 - Tidal Marsh (1,698.47 acres)

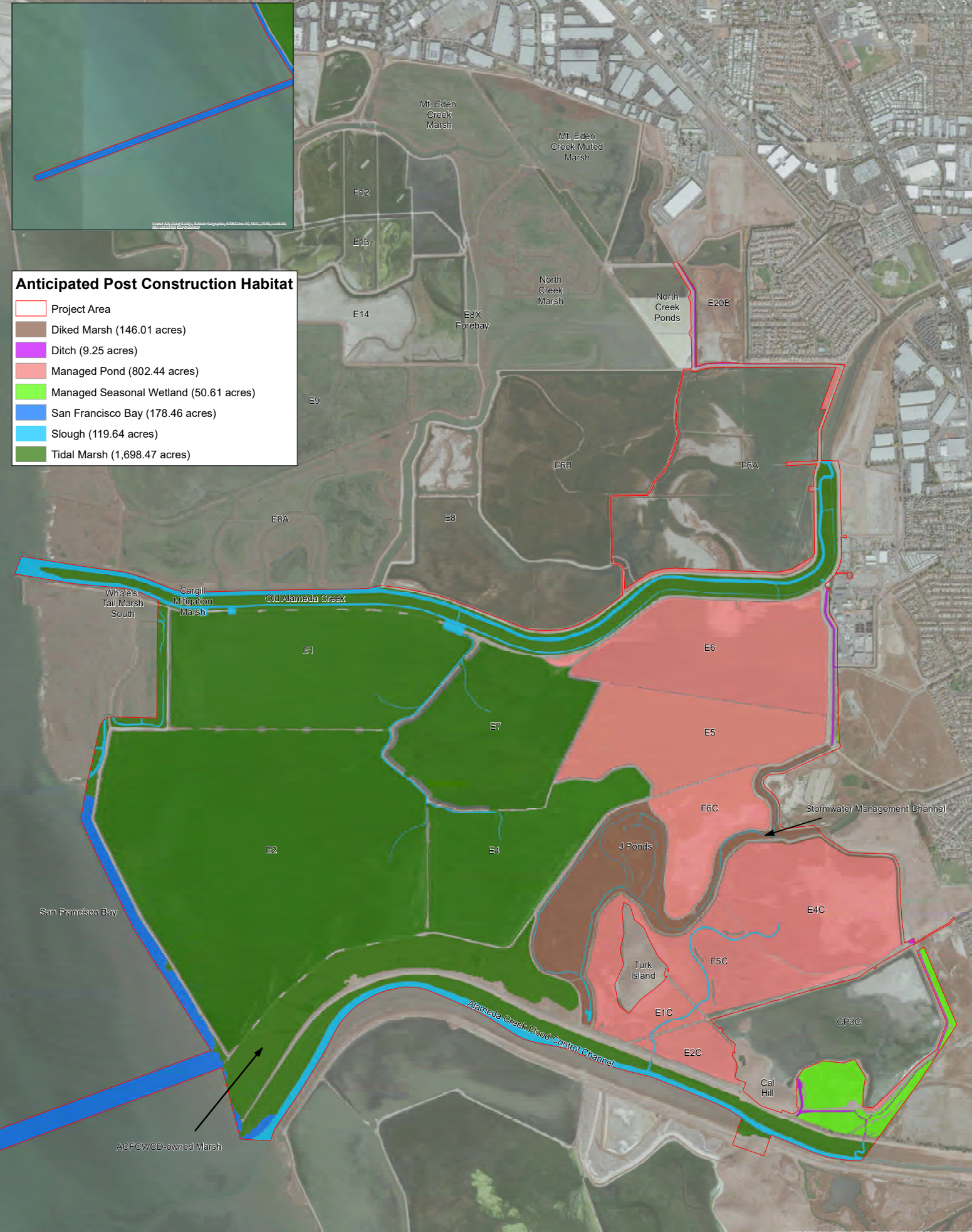


Figure 9 Anticipated Post Construction Habitat - South Bay Salt Pond Restoration Project, Eden Landing Ecological Reserve: Phase 2