



SCWA Flood Control Zone Boundary

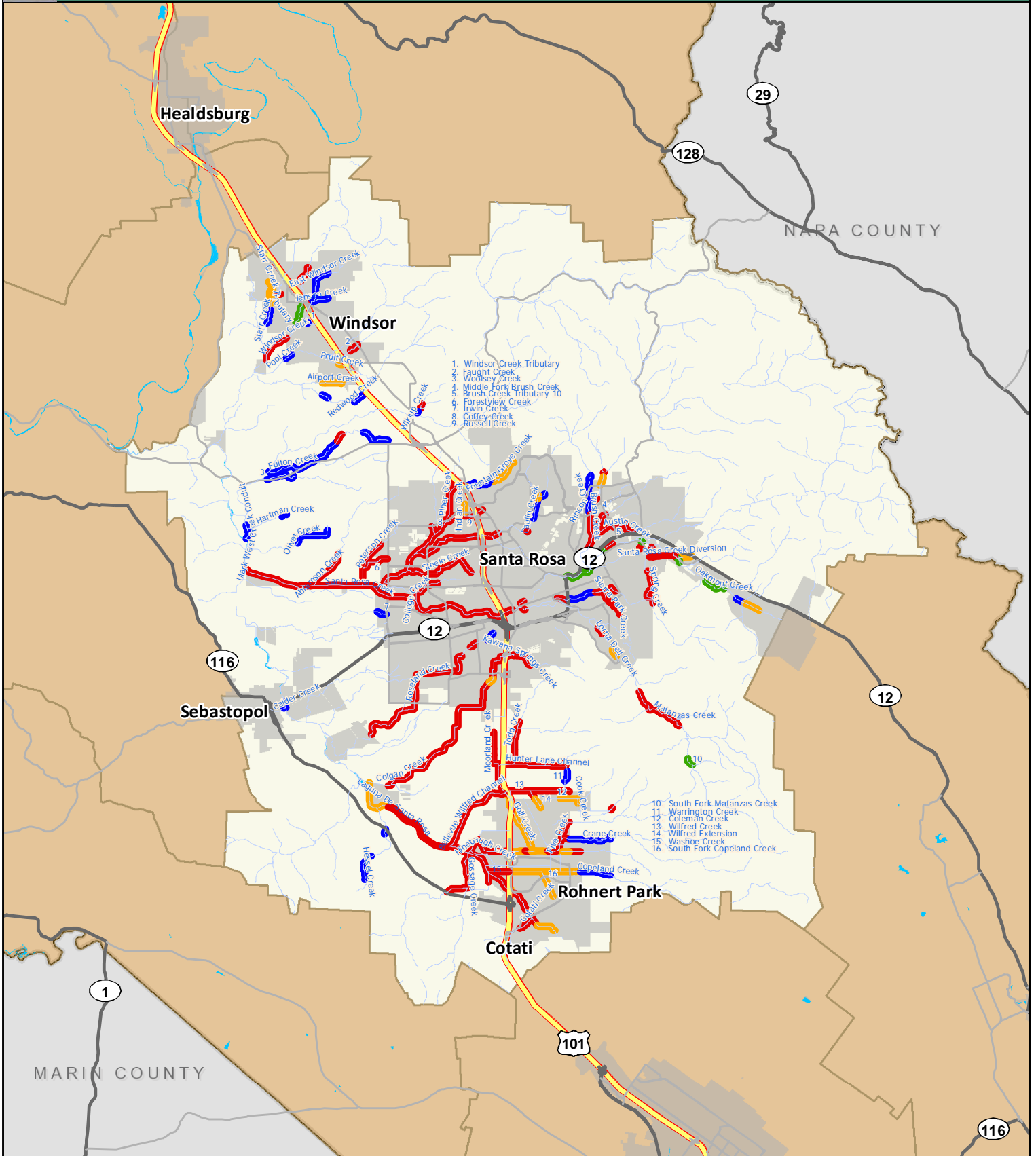
River

City Limits

Highways

Figure 1-1
Program Area

0 2 4 6 8
Miles



SCWA Easements

- Engineered Channel-Easement Maintained
- Engineered Channel-Owned in Fee
- Modified Channel-Easement Maintained
- Natural Channel-Easement Maintained

- Highway
- Secondary Road
- Roads

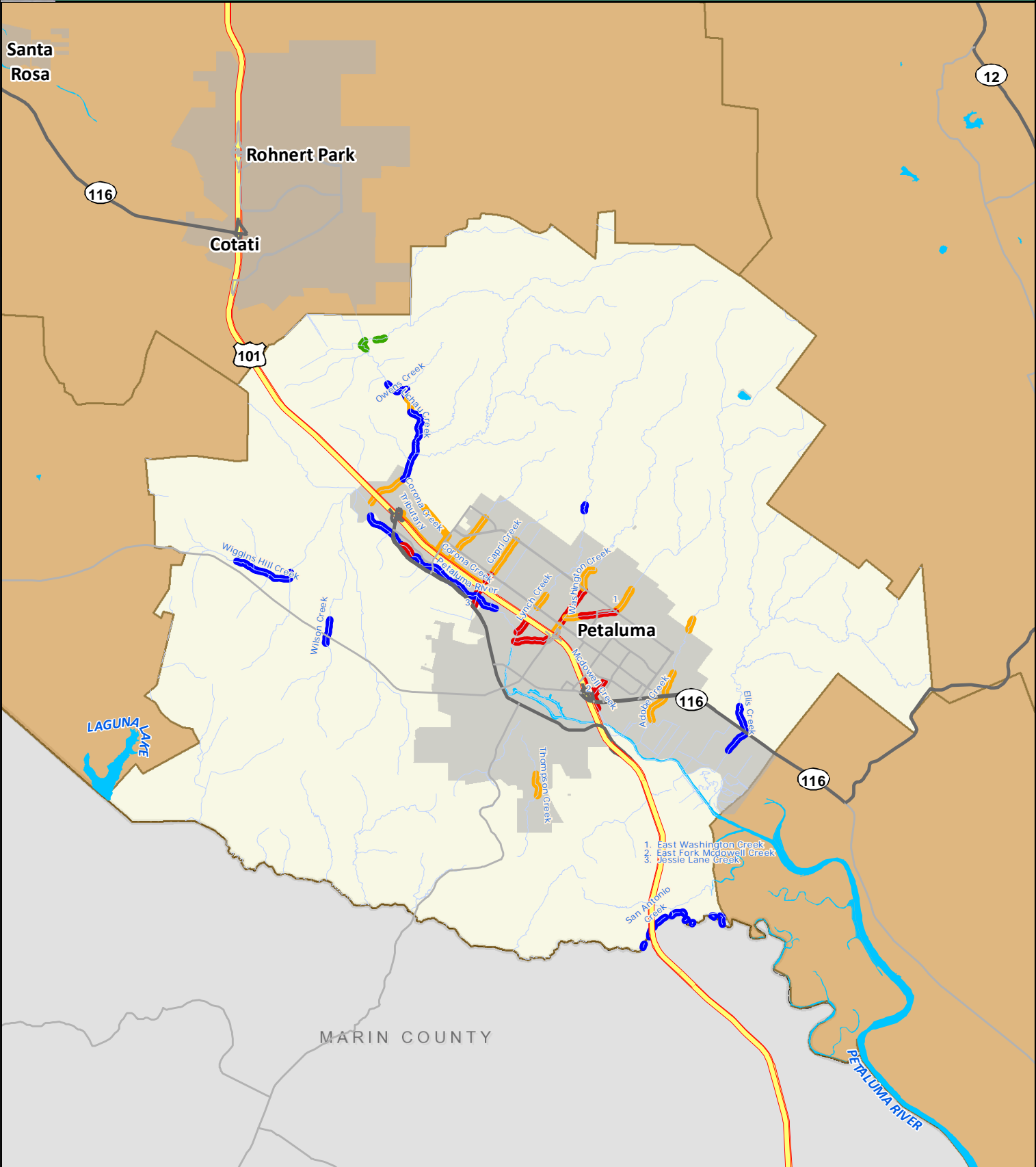
- City Limits
- Water Body
- ~ Streams

Figure 1-2
Flood Control Zone 1A



Sources: Sonoma County Water Agency; Sonoma County GIS





SCWA Easements

- Engineered Channel-Easement Maintained
- Engineered Channel-Owned in Fee
- Modified Channel-Easement Maintained
- Natural Channel-Easement Maintained
- Highway
- Secondary Road
- Roads
- City Limits
- Water Bodies
- Streams

Figure 1-3
Zone 2A

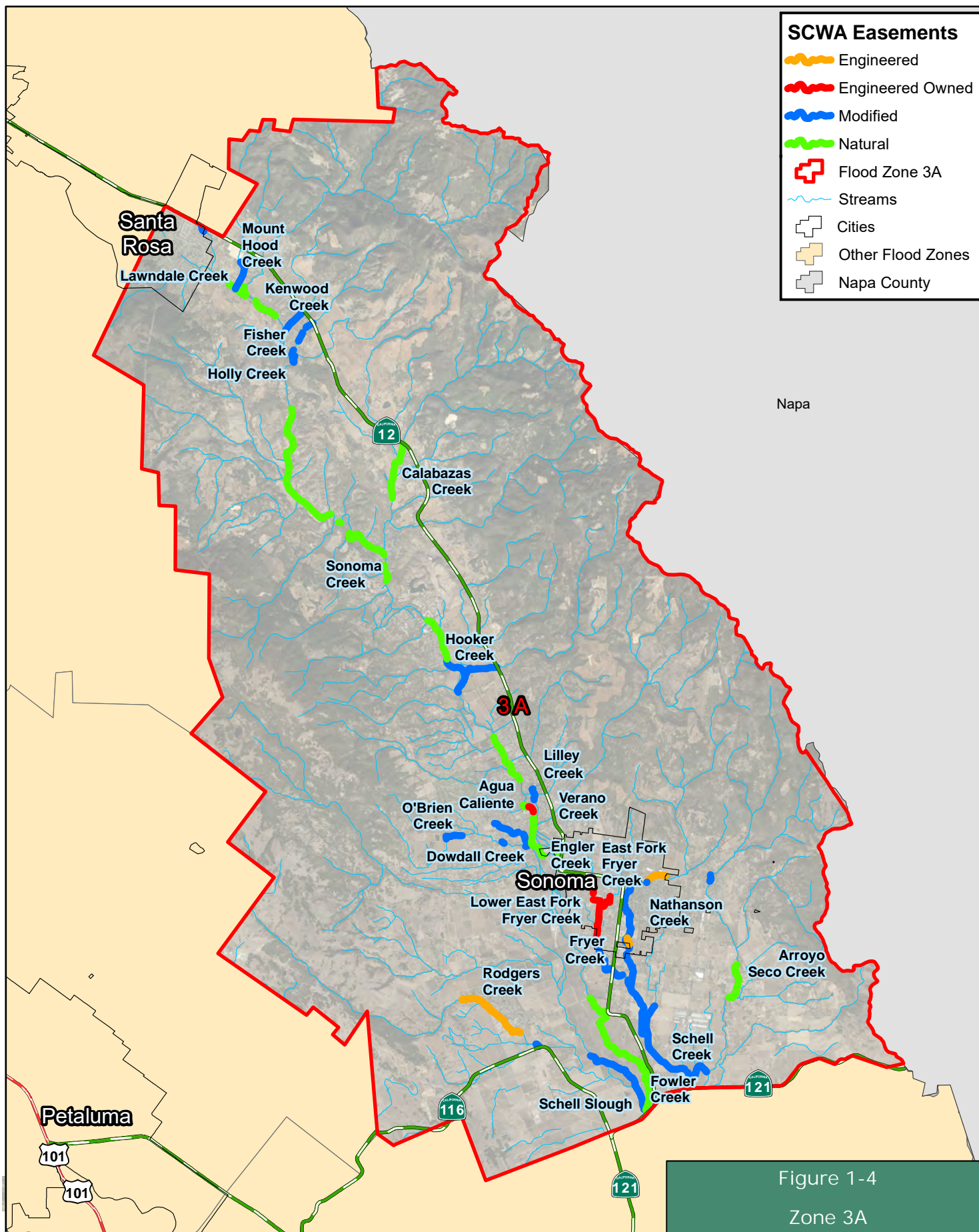
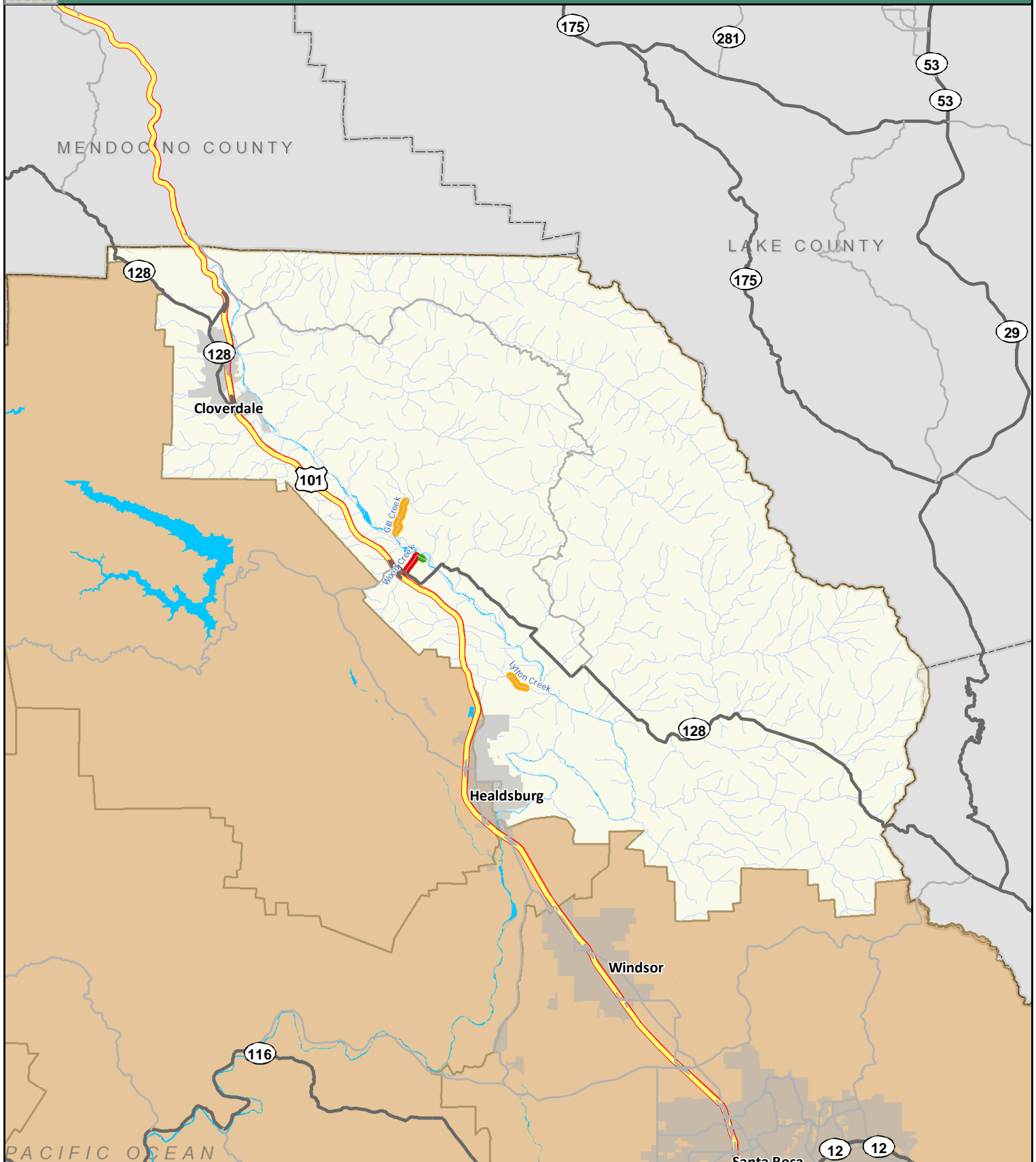


Figure 1-4
Zone 3A





SCWA Easements

- Engineered Channel-Easement Maintained
- Engineered Channel-Owned in Fee
- Natural Channel-Easement Maintained
- Highway
- Secondary Road
- Roads

- City Limits
- Water Body
- Streams

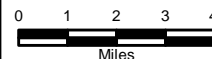


Figure 1-5
Zone 4A



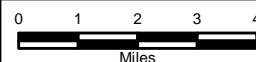
SCWA Easements

- Engineered Channel-Owned in Fee
- Modified Channel-Easement Maintained
- Natural Channel-Easement Maintained

- Highway
- Secondary Road
- Roads

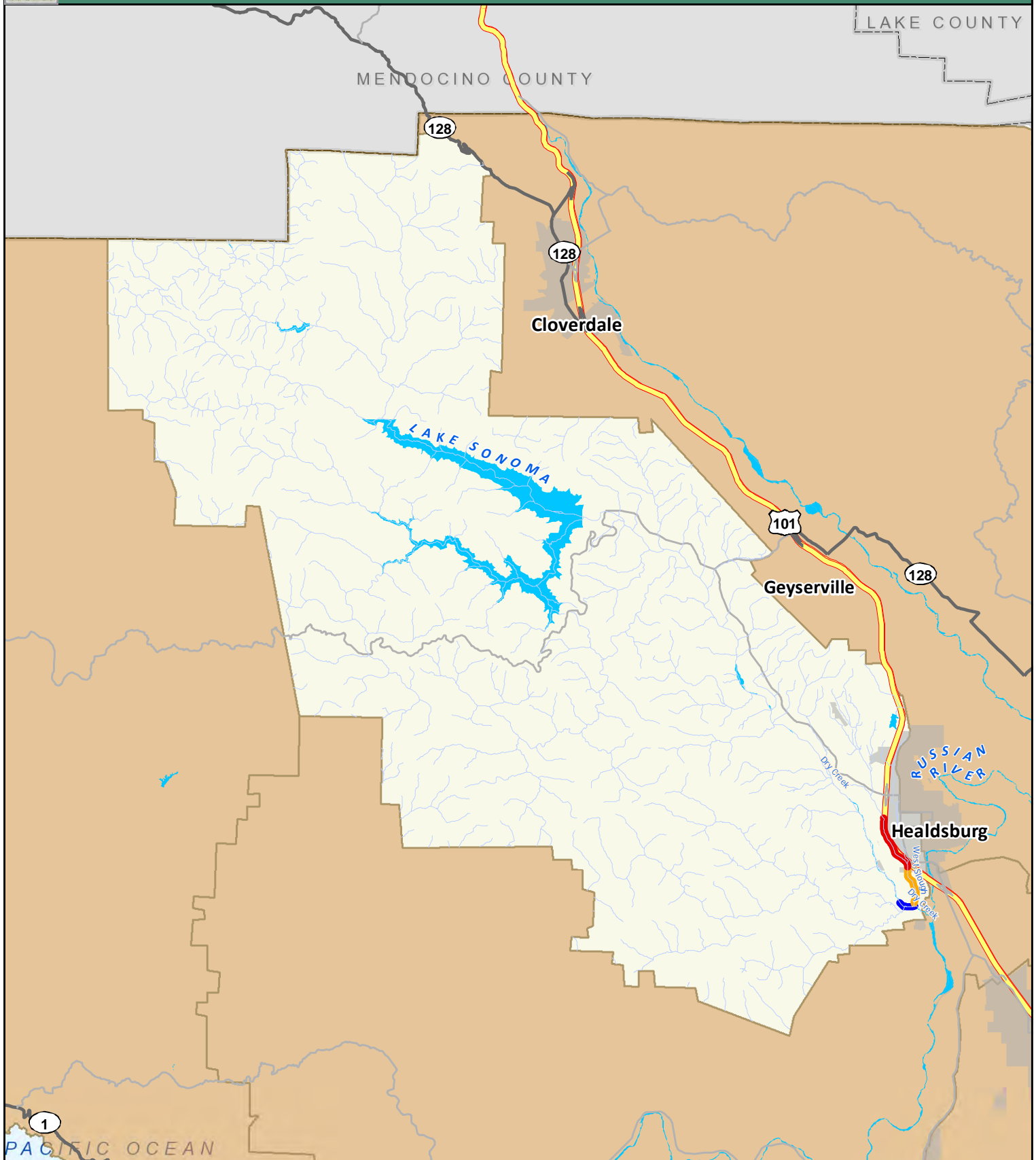
- City Limits
- Water Body
- ~ Streams

**Figure 1-6
Flood Control Zone 5A**



Sources: Sonoma County Water Agency; Sonoma County GIS

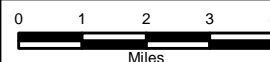




SCWA Easements

- | | | |
|--|--|---|
| — Engineered Channel-Easement Maintained | — Highway | — Water Body |
| — Engineered Channel-Owned in Fee | — Secondary Road | — City Limits |
| — Modified Channel-Easement Maintained | — Roads | — Streams |

Figure 1-7
Zone 6A



Sources: Sonoma County Water Agency; Sonoma County GIS





SCWA Easements

Engineered Channel-Owned in Fee

Natural Channel-Easement Maintained

Highway

Secondary Road

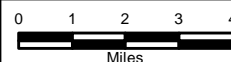
Roads

Water Body

City Limits

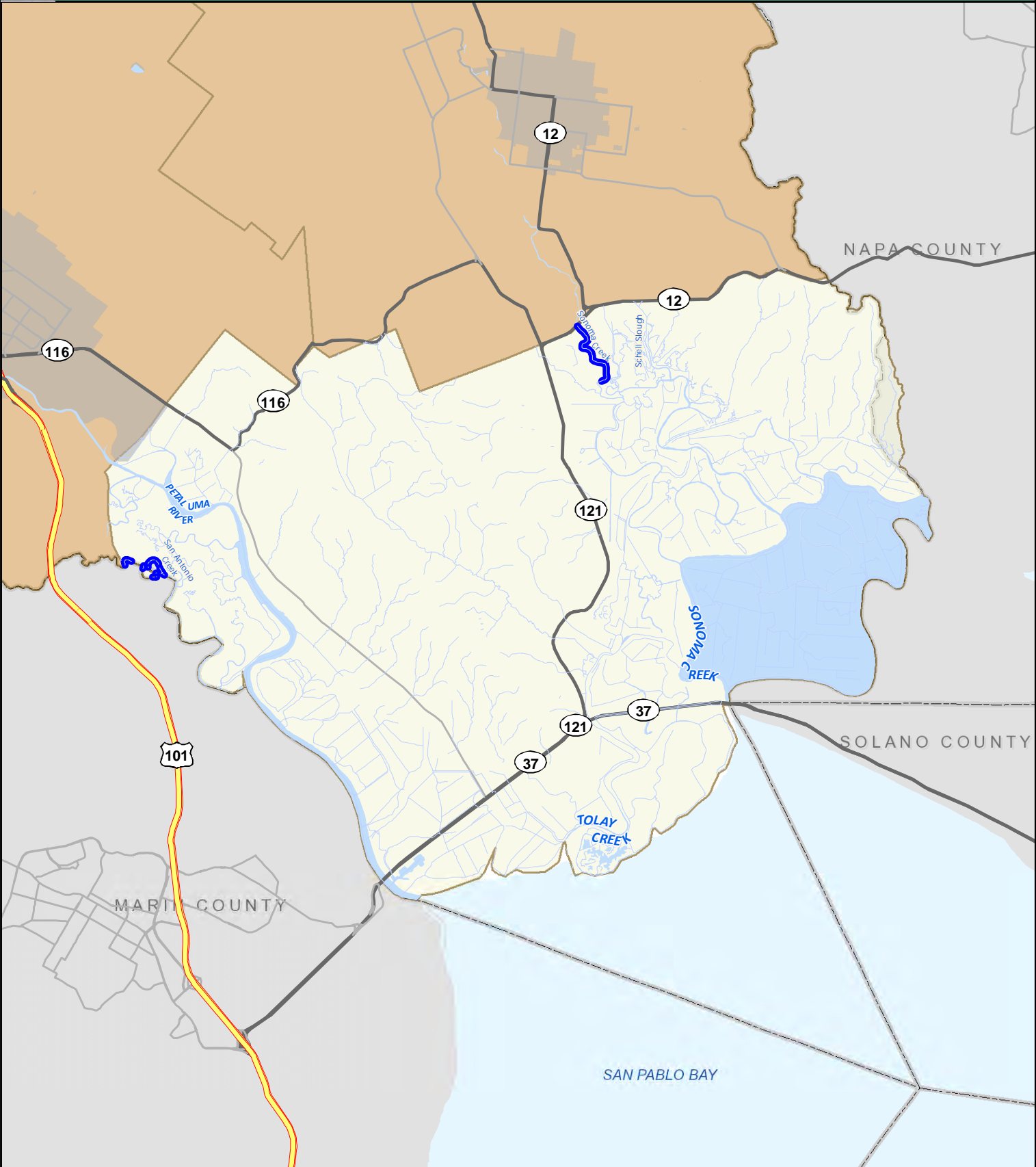
Streams

Figure 1-8
Zone 8A



Sources: Sonoma County Water Agency; Sonoma County GIS





SCWA Easements

- Modified Channel-Easement Maintained
- Highway
- Secondary Road
- Roads
- Water Body
- City Limits
- Streams

*Following guidance provided by NMFS & USFWS regarding sensitive species habitat, certain natural channels were removed from maintenance activities and coverage of the SMP. These creeks and reaches are indicated in Figure 1-12

Figure 1-9 Zone 9A

0 1 2 3 4

Miles

Sources: Sonoma County Water Agency; Sonoma County GIS