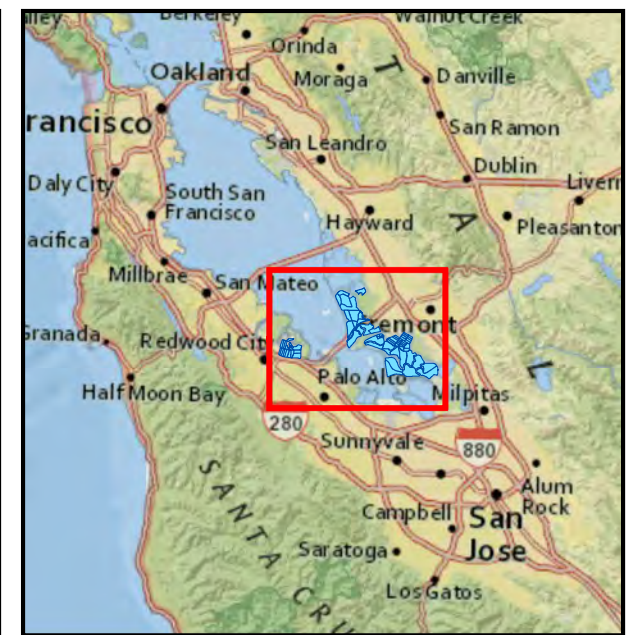
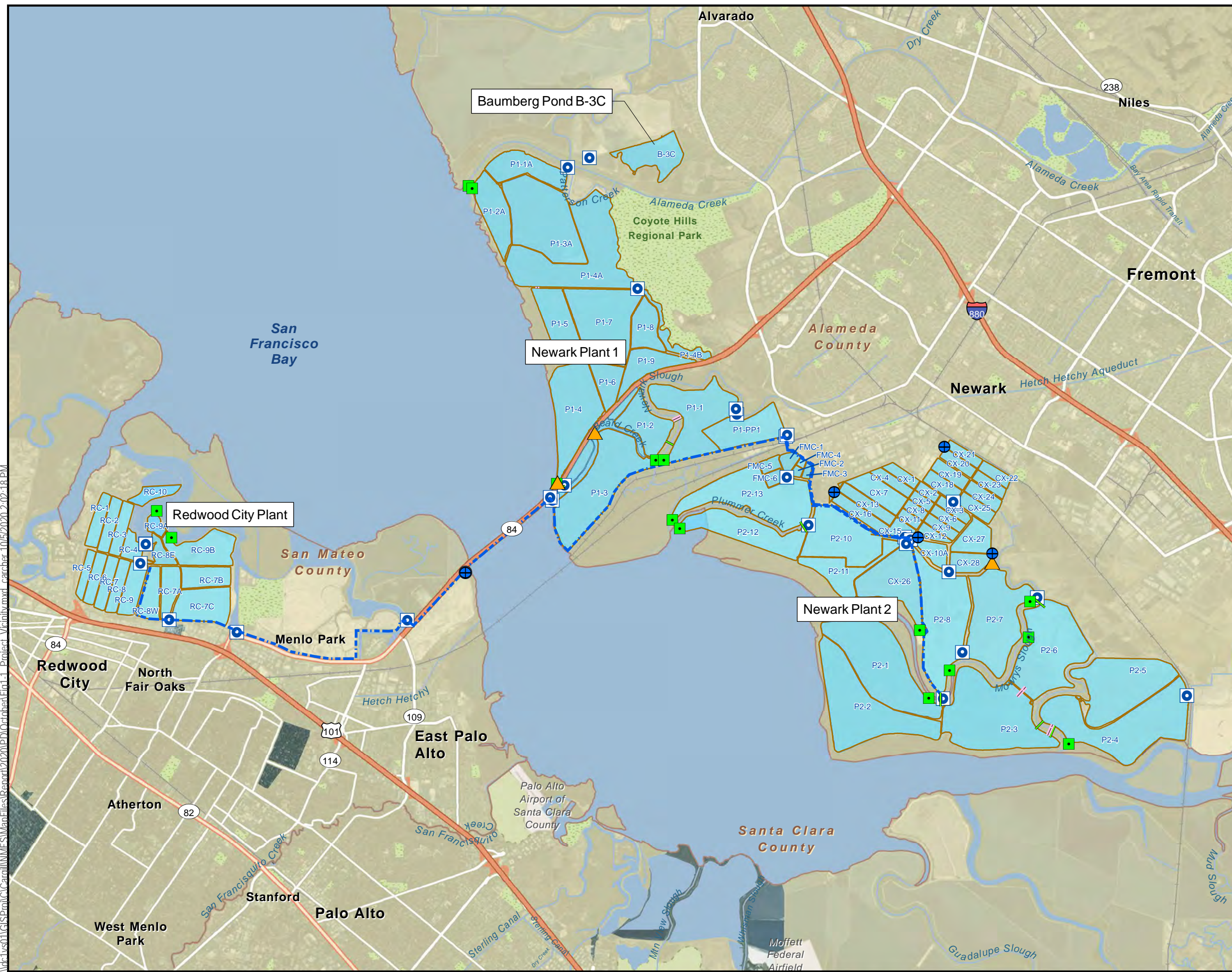


\\d1vs01\GIS\Proj\CA\Carroll\MMF\Map\Elites\Report\2020\DP\October\Fig1-1_Proposal_Vicinity.mxd_carrher_10/15/2020_2:02:18 PM



Legend

- Pumps
- Locks
- Redwood City Maintenance Pond
- Multipurpose Ditch Intake
- Stockpile Location
- Berms
- Brine Pipeline
- Siphon
- Pipeline
- System Ponds

Note:
Service Layer Credits: ESRI, National Geographic

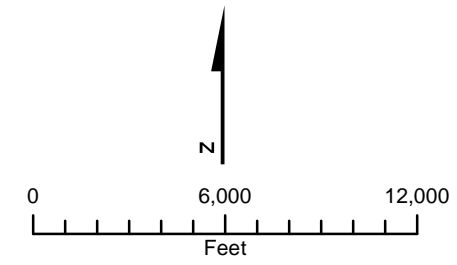
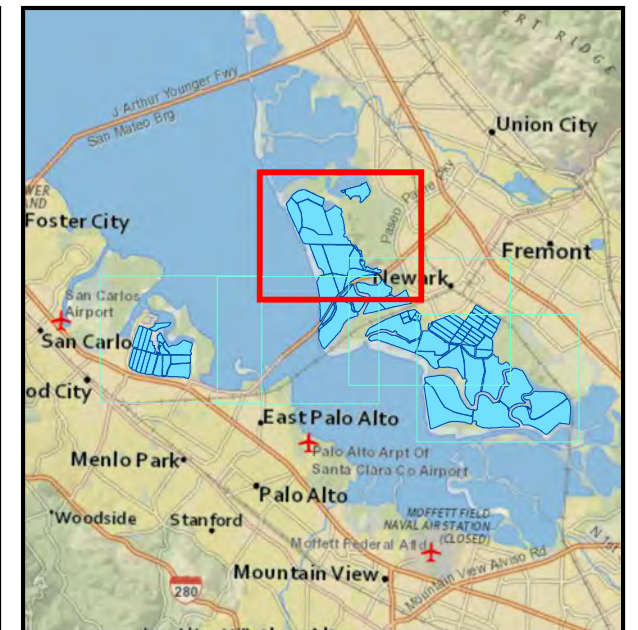


Figure 1
Cargill Solar Salt System Vicinity and Project Site
 Cargill, Incorporated
 Alameda and San Mateo County, CA

\\d1vs011cgs\proj\CA\Carroll\MMFES\Map\Elies\Report\2020\01\01\October\Fig2-1_Protect_Area_Manbook.mxd_catcher_10/5/2020 2:01:06 PM



- Legend**
- Pumps
 - Locks
 - Berm
 - Siphon
 - Pipeline
 - Newark Plant 1 System Ponds
 - Don Edwards San Francisco Bay National Wildlife Refuge
 - Railroads
 - Bay Trail
 - USFWS Trail

Note:
Service Layer Credits: ESRI, National Geographic

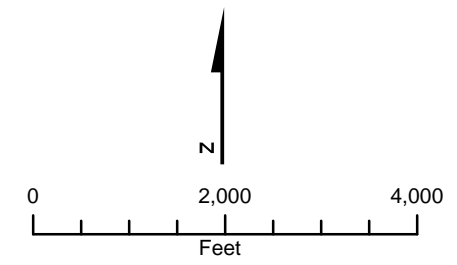


Figure 2a
Map 1 of 5
Cargill Solar Salt System Project Area
Cargill, Incorporated
Alameda and San Mateo Counties, CA



- Legend**
- Pumps
 - Locks
 - Redwood City Maintenance Pond
 - Multipurpose Ditch Intake
 - Stockpile Location
 - Berm
 - Brine Pipeline
 - Siphon
 - Pipeline
 - Newark Plant 1 System Ponds
 - Newark Plant 2 System Ponds
 - Don Edwards San Francisco Bay National Wildlife Refuge
 - Railroads
 - Bay Trail
 - USFWS Trail

Note:
Service Layer Credits: ESRI, National Geographic

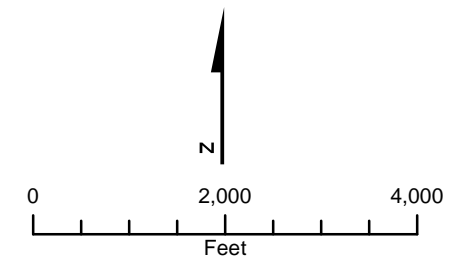


Figure 2e
Map 5 of 5
Cargill Solar Salt System Project Area
Cargill, Incorporated
Alameda and San Mateo Counties, CA

I:\data\011010\GIS\Proj\1010\Map\Elites\Report\2020\01\01\October\Fig2-1_Protect_Area_Mapbook.mxd - carcher - 10/15/2020 2:01:06 PM

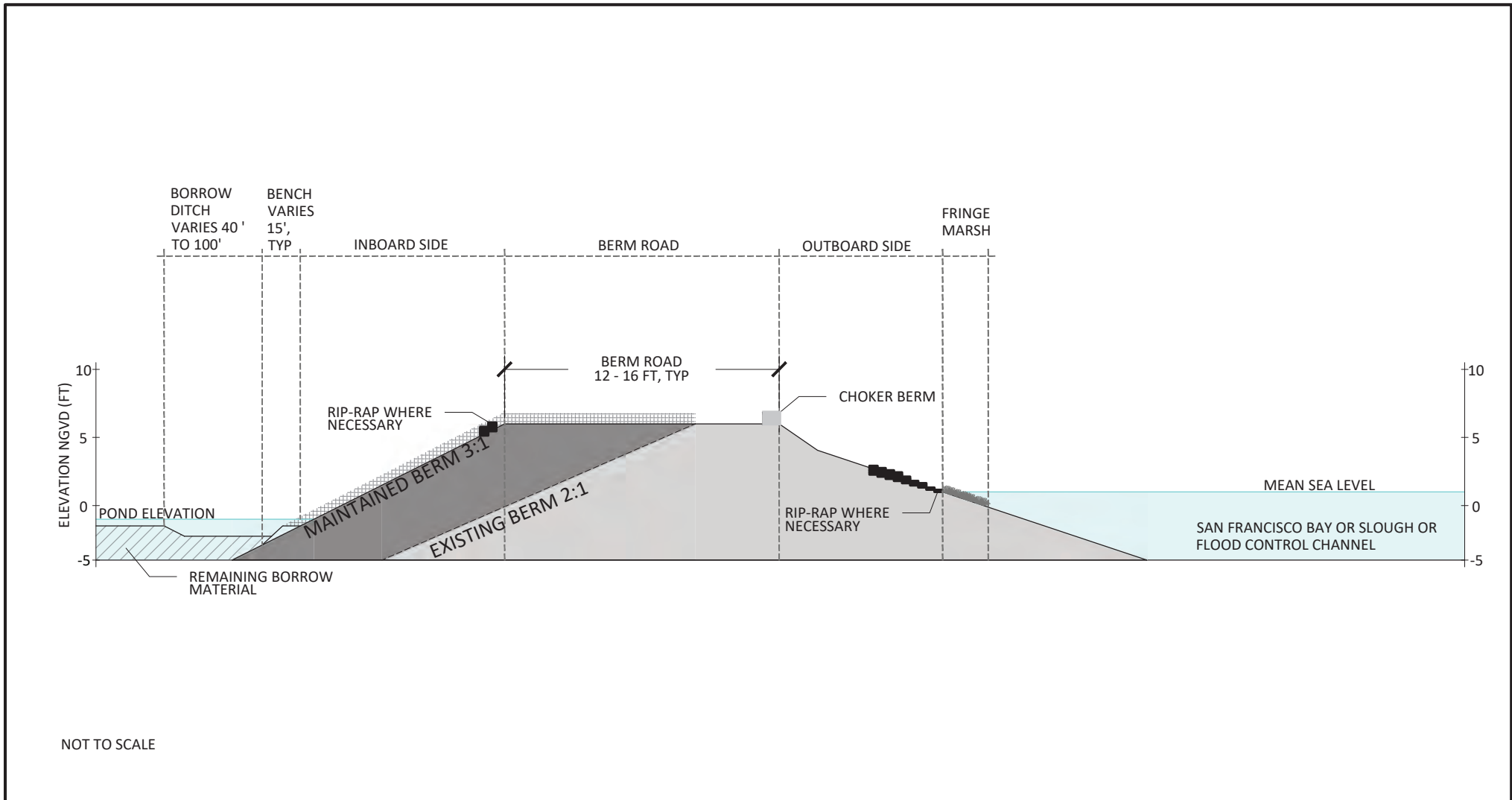


Figure 3. Salt Pond Berm: Typical Cross Section

\\dcl1vs011\GIS\Projects\Carroll\MMFES\Map\Elies\Report\2020\202010\October\Fig2-10_Lock_Access_Exit.mxd_catchier_10/5/2020 2:07:48 PM



Legend

- Access Cut
- Stockpile

Note:
Service Layer Credits: ESRI, National Geographic

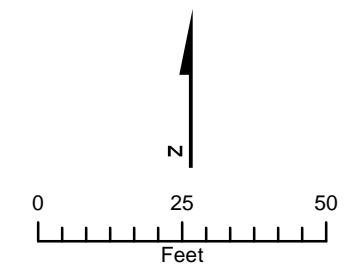


Figure 4
Example of Lock Access/Exit Process Components

Cargill, Incorporated
Alameda and San Mateo County, CA